

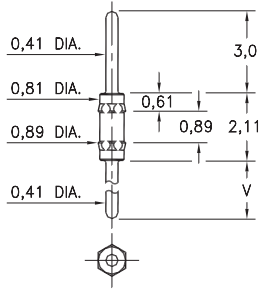
MALE PCB PINS

PRINTED CIRCUIT PINS

4006

4006-X-00-XX-00-00-03-0

Hex press-fit in 0,86 mounting hole

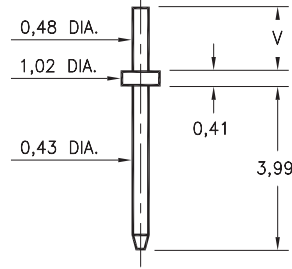


Basic Part Number	Length V
4006-0	3,0
4006-1	4,78
4006-2	7,32

3121

3121-X-00-XX-00-00-08-0

Solder mount in 0,58 mounting hole
Material is annealed.

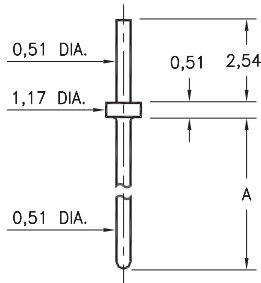


Basic Part Number	Substrate Thickness	Length V
3121-1	0,64	1,55
3121-2	1,02	1,91

3128

3128-X-00-XX-00-00-08-0

Solder mount in 0,61 min. mounting hole

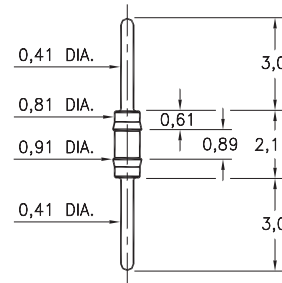


Basic Part Number	Length A
3128-1	6,35
3128-2	10,8
3128-3	13,34
3128-4	14,22
3128-5	23,62

3006

3006-0-00-XX-00-00-03-0

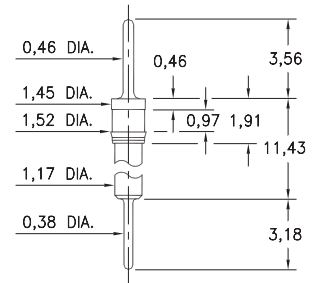
Press-fit in 0,86 mounting hole



8885

8885-0-00-XX-00-00-03-0

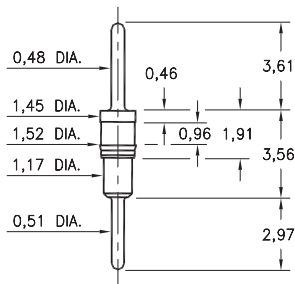
Press-fit in 1,45 mounting hole



6218

6218-0-00-XX-00-00-03-0

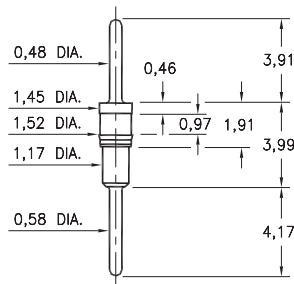
Press-fit in 1,45 mounting hole



5012

5012-0-00-XX-00-00-03-0

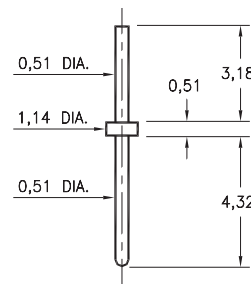
Press-fit in 1,45 mounting hole



9081

9081-0-00-XX-00-00-08-0

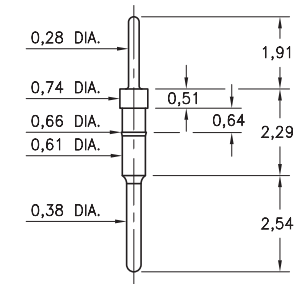
Solder mount in 0,61 mounting hole



3039

3039-0-00-15-00-00-03-0

Press-fit in .025 mounting hole



SPECIFICATIONS:

Pin Material: Brass Alloy 360, 1/2 Hard
(Except where noted)

Dimensions: Millimeters

Tolerances On: Lengths: $\pm 0,13$
Diameters: $\pm 0,051$
Angles: $\pm 2^\circ$



ORDER CODE: XXXX - X - 00 - XX - 00 - 00 - XX - 0

BASIC PART #

SPECIFY PIN FINISH:

- 01 5,08 μ m TIN/LEAD OVER NICKEL
- ◆ 80 5,08 μ m TIN OVER NICKEL (RoHS)
- ◆ 15 0,25 μ m GOLD OVER NICKEL (RoHS)
- ◆ 21 0,51 μ m GOLD OVER NICKEL (RoHS)
- ◆ 34 1,27 μ m GOLD OVER NICKEL (RoHS)



Mouser Electronics

Authorized Distributor

Click to View Pricing, Inventory, Delivery & Lifecycle Information:

[Mill-Max:](#)

[3121-2-00-34-00-00-08-0](#) [3121-2-00-15-00-00-08-0](#) [3128-2-00-34-00-00-08-0](#) [3128-5-00-15-00-00-08-0](#) [6218-0-00-15-00-00-03-0](#) [3128-5-00-00-00-00-08-0](#) [9081-0-00-00-00-00-08-0](#)