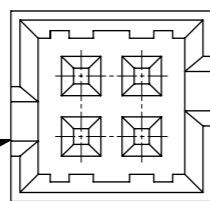


RECOMMENDED PCB PATTERN



4 CKT:
BOTH SIDE WITH POLARIZATION SLOT
6 CKT & ABV:
ONLY 1 SIDE WITH POLARIZATION SLOT

4 CKT TOP VIEW

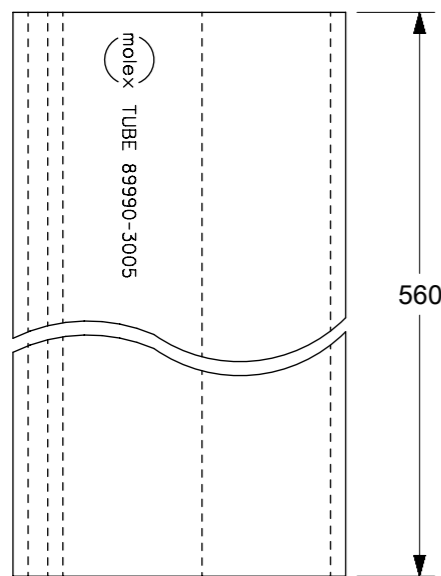
PEG OPTION	P/N WITH CAP IN TAPE & REEL		P/N WITH CAP IN TUBE		CKT SIZE	DIMENSION			
	15µin Gold	30µin Gold	15µin Gold	30µin Gold		A	B	C	D
NO	87832-0440	87832-0442	87832-0441	87832-0443	4	2.00	4.85	6.65	5.00
YES	87832-0640	87832-0642	87832-0641	87832-0643	6	4.00	6.85	8.65	7.00
YES	87832-0840	87832-0842	87832-0841	87832-0843	8	6.00	8.85	10.65	9.00
YES	87832-1040	87832-1042	87832-1041	87832-1043	10	8.00	10.85	12.65	11.00
YES	87832-1240	87832-1242	87832-1241	87832-1243	12	10.00	12.85	14.65	13.00
NO	---	87832-5242	---	87832-5243					

NOTES:

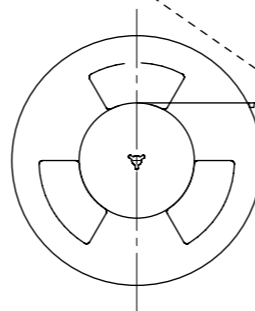
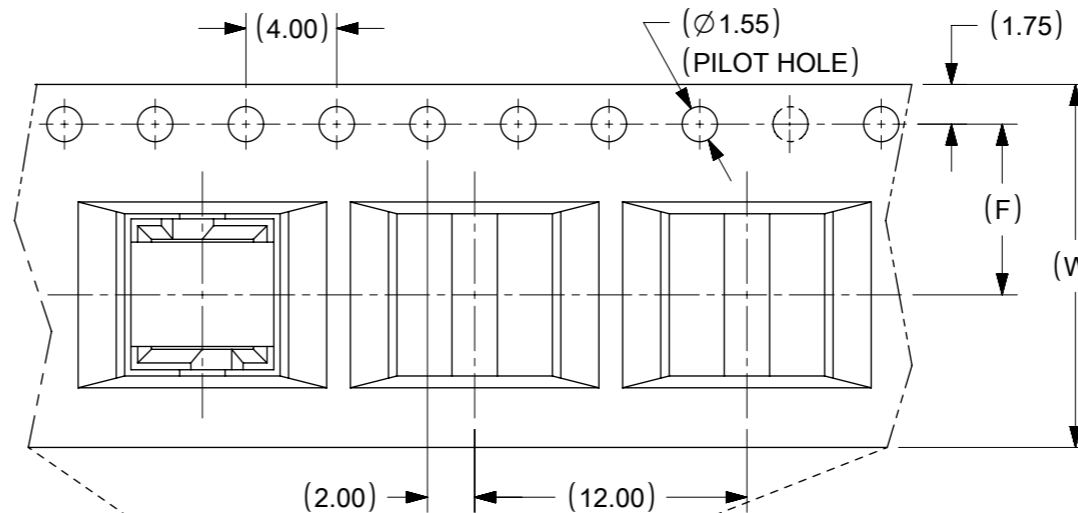
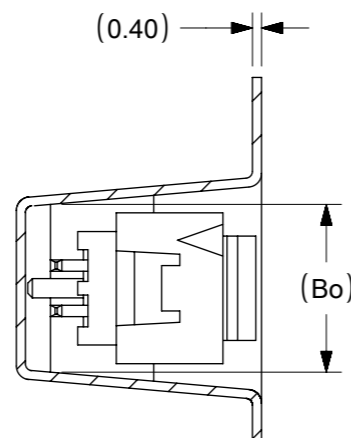
- FOR ILLUSTRATION PURPOSES, 8 CIRCUIT SIZE WAFER IS SHOWN.
- MATERIAL :
HOUSING & CAP : 30% G.F., NYLON 46, UL94V-0, COLOR BLACK.
PIN : 0.50mm SQ. PHOSPHOR BRONZE.
- PLATING :
40, 41 - 0.38µm/15µin GOLD IN CONTACT AREA AND 1.88µm/75µin MIN. TIN IN SOLDER TAIL AREA OVER 1.27µm/50µin MIN. NICKEL OVERALL.
42, 43 - 0.76µm/30µin GOLD IN CONTACT AREA AND 1.88µm/75µin MIN. TIN IN SOLDER TAIL AREA OVER 1.27µm/50µin MIN. NICKEL OVERALL.
- PIN PUSHOUT FORCE : 0.91kg MIN. IN EITHER DIRECTION.
- PRODUCT SPECIFICATION PS-87831-027 APPLIES.
- COPLANARITY IS TO BE MEASURED BY RESTING THE SOLDER TAIL ON A GAUGE SURFACE.
- CAP TO BE POSITION IN THE CENTER OF HEADER FOR PICK AND PLACE.
- CKT 4 & 6 HAS NO IDENTIFICATION TAG.
- THIS HEADER MATES WITH MOLEX:
a) CRIMP RECEPTACLE HOUSING, 51110 SERIES WITH CRIMP TERMINAL, 50394 SERIES.
b) 2mm MILLIGRID DUAL ROW IDT, 87568 SERIES.
- PARTS SHALL BE PACKED IN MOISTURE BAG WITH DESICCANT GEL.
- NO CENTRE POLARIZATION SLOT FOR CKT SIZE 4 AND 6.

SYMBOLS	THIS DRAWING CONTAINS INFORMATION THAT IS PROPRIETARY TO MOLEX ELECTRONIC TECHNOLOGIES, LLC AND SHOULD NOT BE USED WITHOUT WRITTEN PERMISSION		CURRENT REV DESC:		
	DIMENSION UNITS	SCALE			
▽ = 0	MM	1:1			MGRID, SHROUDED HEADER W/PEG/CAP/LOCK FEATURES SMT, IN TUBE AND T&R
▽ = 0	GENERAL TOLERANCES (UNLESS SPECIFIED)				
▽ = 0		MM	INCH		
▽ = 0	4 PLACES	±	±	EC NO: 610895	PRODUCT CUSTOMER DRAWING
▽ = 0	3 PLACES	±	±	DRWN: ME 2019/01/17	
▽ = 0	2 PLACES	±	0.15	CHK'D: VRAMAKANTALA 2019/01/23	DOCUMENT NUMBER: SD-87832-013 DOC TYPE: PSD DOC PART: 001 REVISION: A8
▽ = 0	1 PLACE	±	±	APPR: ME 2019/01/23	
▽ = 0	0 PLACES	±	±	INITIAL REVISION:	MATERIAL NUMBER: SEE TABLE CUSTOMER: GENERAL MARKET SHEET NUMBER: 1 OF 2
▽ = 0	ANGULAR TOL	±	3.0°	DRWN: ATSEE 2004/07/29 APPR: SKTOH 2004/08/05	
▽ = 0	DRAFT WHERE APPLICABLE MUST REMAIN WITHIN DIMENSIONS		THIRD ANGLE PROJECTION	DRAWING: A3-SIZE	SERIES: 87832

WITH CAP IN TUBE PACKAGING

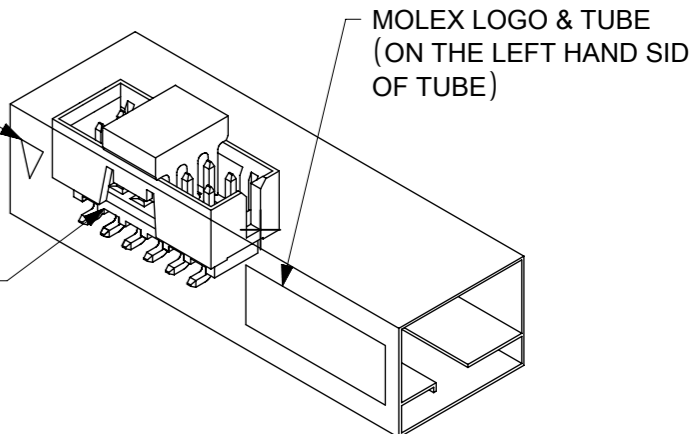
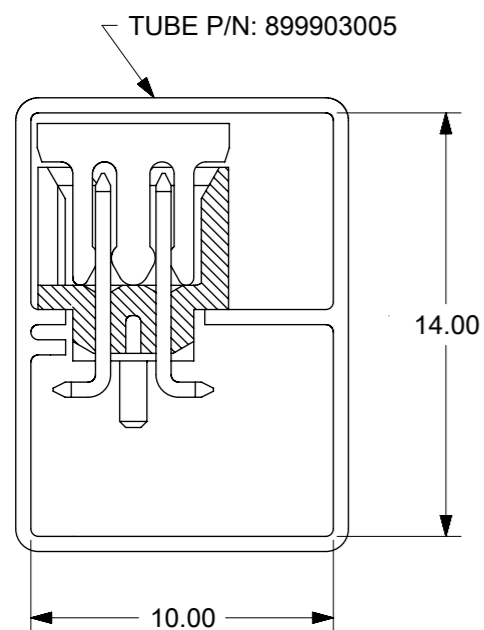


PART IN T&R FOR ILLUSTRATION PURPOSE ONLY



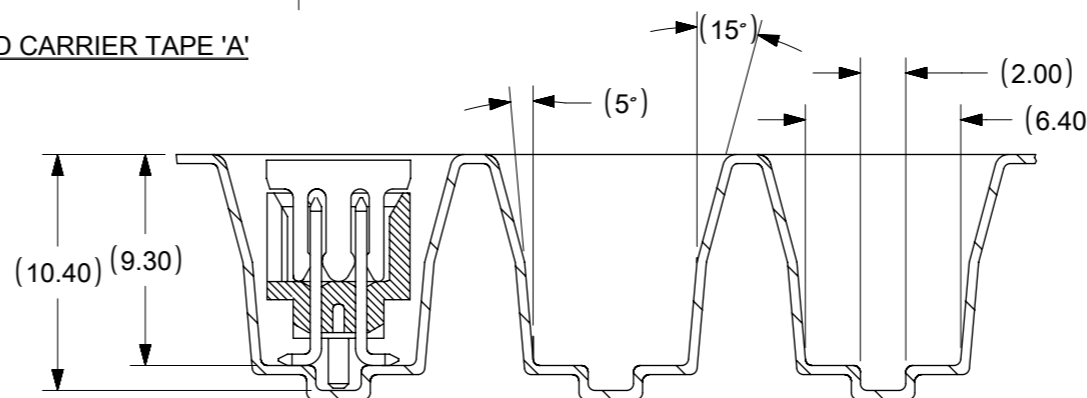
RED ARROW INDICATION

WINDOW FACING OUTWARDS



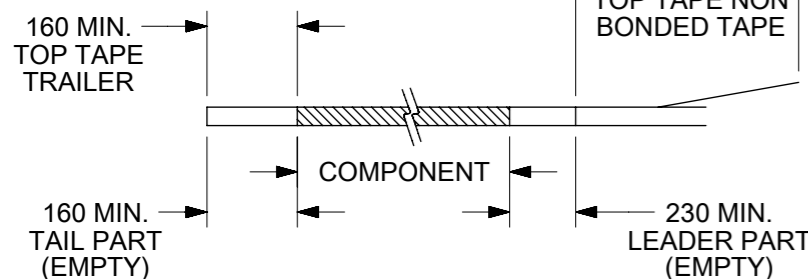
REF : ORIENTATION OF PART IN TUBE. (FOR THE REFERENCE OF PART/TUBE ASSEMBLY.)

EMBOSSED CARRIER TAPE 'A'

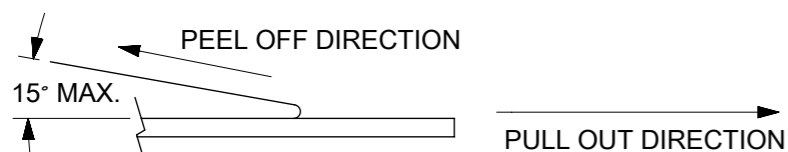


NOTES:

1. LEADER AND TRAILER TAPE



2. PEELING OFF FORCE OF THE TOP TAPE: 20-80gf. (PEELING DIRECTION AS SHOWN IN FOLLOWING FIGURE)



3. PACKAGING STANDARD IS AS PER EIA-481.

PART NUMBER WITH CAP IN TAPE/REEL		CKT SIZE	EMBROSS TAPE PART NUMBER	TOP TAPE NUMBER	REEL NUMBER	(F)	(Bo)	(So)	(W)
87832-0440	87832-0442	4	89990-7601	89990-5602	89990-5709	7.50	7.15	-	16.00
87832-0640	87832-0642	6	89990-7752	89990-5603	89990-5710	11.50	9.15	-	24.00
87832-0840	87832-0842	8	89990-7753	89990-5603	89990-5710	11.50	11.05	-	24.00
87832-1040	87832-1042	10	89990-7754	89990-5603	89990-5710	11.50	13.05	-	24.00
87832-1240	87832-1242	12	89990-7755	89990-5604	89990-5711	14.20	15.15	28.40	32.00
---	87832-5242								

THIS DRAWING CONTAINS INFORMATION THAT IS PROPRIETARY TO MOLEX ELECTRONIC TECHNOLOGIES, LLC AND SHOULD NOT BE USED WITHOUT WRITTEN PERMISSION									
SYMBOLS	DIMENSION UNITS	SCALE	CURRENT REV DESC:						
	MM	1:1	molex						
GENERAL TOLERANCES (UNLESS SPECIFIED)			EC NO: 610895				MGRID, SHROUDED HEADER		
▽ = 0	4 PLACES ±	MM	INCH	DRWN: ME	2019/01/17	W/PEG/CAP/LOCK FEATURES SMT, IN TUBE AND T&R			
▽ = 0	3 PLACES ±			CHK'D: VRAMAKANTALA	2019/01/23	PRODUCT CUSTOMER DRAWING			
▽ = 0	2 PLACES ± 0.15			APPR: ME	2019/01/23	DOCUMENT NUMBER			
▽ = 0	1 PLACE ±			INITIAL REVISION:		SD-87832-013			
▽ = 0	0 PLACES ±			DRWN: ATSEE	2004/07/29	DOCTYPE	DOC PART	REVISION	
▽ = 0	ANGULAR TOL ± 3.0°			APPR: SKTOH	2004/08/05	PSD	001	A8	
▽ = 0	DRAFT WHERE APPLICABLE MUST REMAIN WITHIN DIMENSIONS	THIRD ANGLE PROJECTION	DRAWING	SERIES	MATERIAL NUMBER	CUSTOMER	SHEET NUMBER		
▽ = 0		⊗	A3-SIZE	87832	SEE TABLE	GENERAL MARKET	2 OF 2		