

4

3

2

1

THIS DRAWING IS UNPUBLISHED.

RELEASED FOR PUBLICATION

© COPYRIGHT

ALL RIGHTS RESERVED.

LOC

DIST


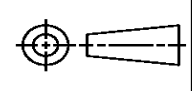
REVISIONS

P	LTR	DESCRIPTION	DATE	DWN	APVD
	A1	ECR-13-019228	17DEC13	RS	LZ

REPLACED BY OCEAN STYLE APPLICATOR PART  
NUMBER 2151154-1


FOR REPLACEMENT PARTS FOR APPLICATOR 1528343  
REFER TO ADDITIONAL PAGE(S). SPARE PARTS KIT (IF LISTED)  
WILL REMAIN AVAILABLE.

THE REPLACEMENT OCEAN STYLE APPLICATOR HAS THE  
SAME TERMINATOR/PRESS INTERFACE AS APPLICATOR  
1528343

THIS DRAWING IS A CONTROLLED DOCUMENT.		DWN R.SHEN		 TE Connectivity			
DIMENSIONS:		CHK LJ.ZHANG					
		APVD U.GUO		NAME FINE ADJ SIDE FD HD-I APPL			
		PRODUCT SPEC					
		APPLICATION SPEC					
MATERIAL		WEIGHT		SIZE A3	CAGE CODE	DRAWING NO C- 1528343	RESTRICTED TO
FINISH		CUSTOMER ACCESSIBLE PRODUCTION DRAWING		SCALE	SHEET 1 OF 2	REV A1	

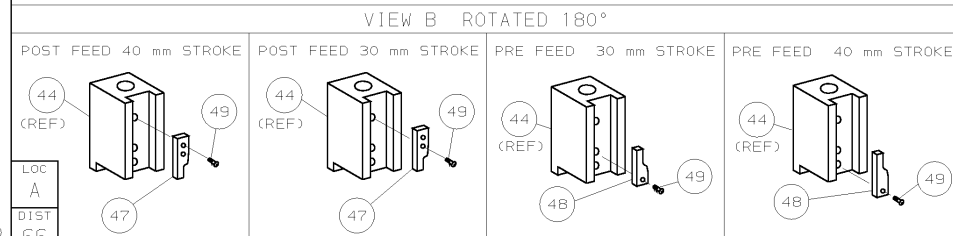
PART NUMBER	REV	FIRST USED	TERMINATOR	FEED TYPE	DESCRIPTION
1528343-1	A	-	LEADMAKER	MECH POST FEED	CUTS CARRIER
1528343-2	A	-	BENCH	MECH PRE FEED	CUTS CARRIER
1528343-6	A	-	LEADMAKER	MECH POST FEED	CONTINUOUS CARRIER
7-1528343-1	A	-	LEADMAKER	MECH POST FEED	-1 AND SPARE PARTS
7-1528343-2	A	-	BENCH	MECH PRE FEED	-2 AND SPARE PARTS
7-1528343-6	A	-	LEADMAKER	MECH POST FEED	-6 AND SPARE PARTS
7-1528343-7	A	-	-	-	SPARE PARTS KIT

[illegible]

-  1. RECOMMENDED SPARE PARTS.

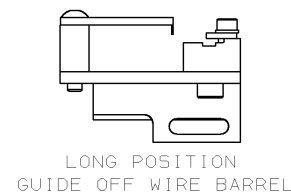
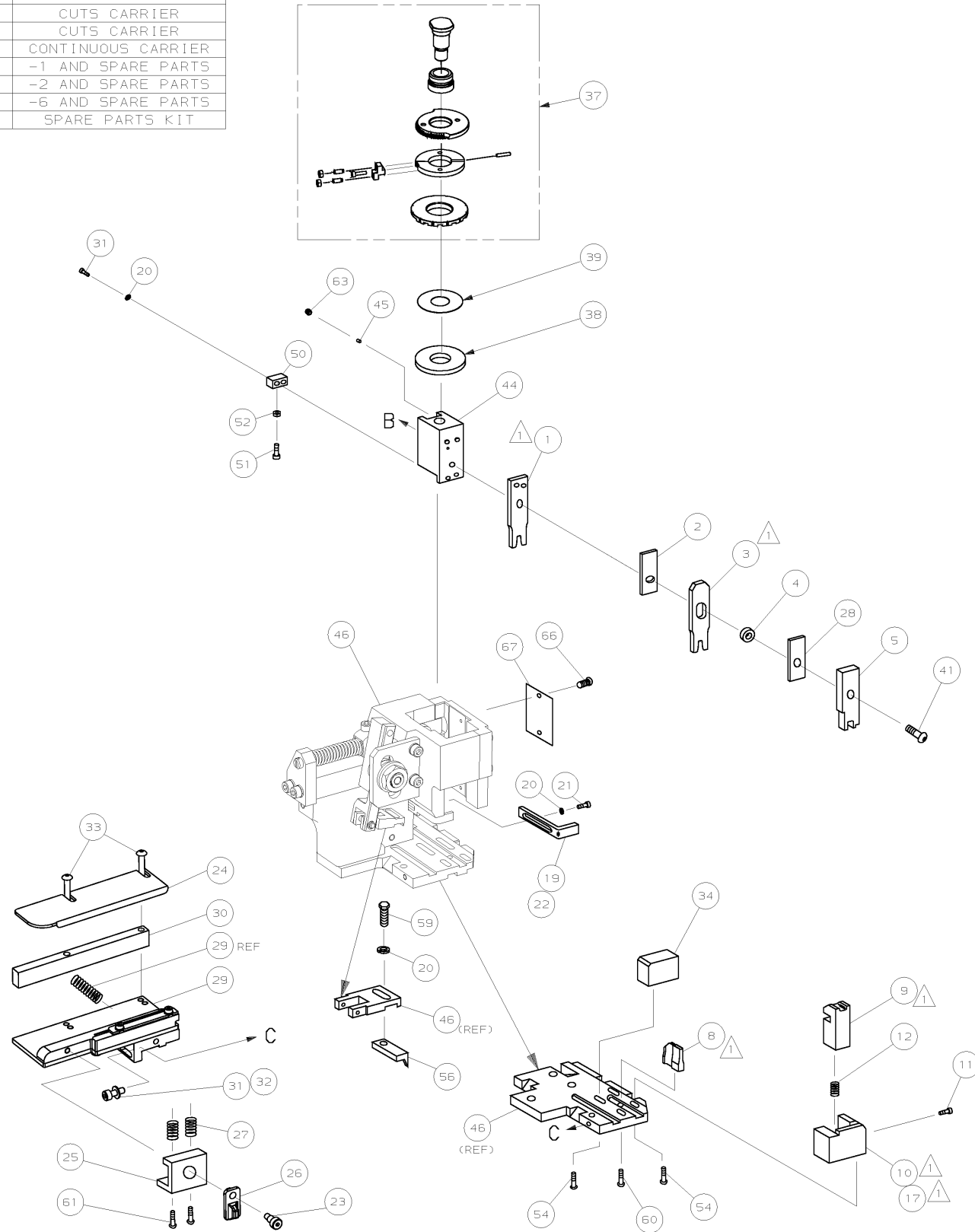
2. GREASE RAM, CAM, CAM FOLLOWER AND FEED ROD LIGHTLY.

3. LUBRICATE DAILY PER THE APPLICATOR INSTRUCTION SHEET SUPPLIED WITH THE APPLICATOR.



\* WARNING:

ON INSTALLATION, SET WIRE DISC TO LARGEST WIRE SIZE SETTING. USE OF SETTINGS BELOW MIN REQUIRED CRIMP HEIGHT SETTING WILL CAUSE DAMAGE TO CRIMP TOOLING.



-	1	1	1	1	1	1	1528343	PRINT, APPLICATOR LOG SHEET	73
-	1	1	1	1	1	1	1338705-3	DOCUMENTATION PACKAGE	72
									71
									70
									69
									68
-	1	1	1	1	1	1	461264-5	PLATE, IDENTIFICATION	67
-	2	2	2	2	2	2	21017-2	SCR,DRIVE(#2x.19) ID PLATE	66
									65
									64
-	1	1	1	1	1	1	3-18031-0	SCR,SKT SET (M6X6) RAM	63
									62
-	2	2	2	2	2	2	1-18024-5	SCR,BHC (M5X25) DRAG	61
-	1	1	1	1	1	1	18024-7	SCR,BHC (M4X10) ANVIL	60
-	1	1	1	1	1	1	5-18022-2	SCR,HEX (M4X8) FEED FINGER	59
									58
									57
-	1	1	1	1	1	1	1338685-1	PAWL, FEED	56
									55
-	4	4	4	4	4	4	18024-8	SCR,BHC (M4x12) SHEAR HOLDER	54
									53
-	1	1	1	1	1	1	18030-1	NUT,HEX (M3) HOLD DOWN	52
-	1	1	1	1	1	1	811242-5	BUMPER, HOLDDOWN	51
-	1	1	1	1	1	1	690753-2	SPACER, TONKER	50
-	1	1	1	1	1	1	18024-3	SCR,BHC (M3X10) CAM	49
-	-	1	-	-	1	-	1338675-1	CAM, PRE FEED 30 & 40 mm ST	48
-	1	-	1	1	-	1	1338676-1	CAM, POST FEED 30 & 40 mm ST	47
-	1	1	1	1	1	1	1320999-3	APPLICATOR BASIC SUBASSY	46
-	1	1	1	1	1	1	690191-1	PLUG, NYLON	45
-	1	1	1	1	1	1	1338660-1	RAM	44
									43
									42
-	1	1	1	1	1	1	2-18024-6	SCR,BHC (M8X25) RAM	41
									40
-	1	1	1	1	1	1	690125-1	SHIM SUBASSY	39
-	1	1	1	1	1	1	469367-2	SPACER, FINE ADJUST	38
-	1	1	1	1	1	1	879103-2	FINE ADJUST HEAD SUBASSY	37
									36
									35
-	1	1	1	1	1	1	1-1320934-6	SUPPORT, TERMINAL	34
-	2	2	2	2	2	2	1-18024-0	SCR,BHC (M4X20) STRIP GUIDE	33
-	1	1	1	1	1	1	18027-2	WASHER, FLAT (M4)	32
-	3	3	3	3	3	3	1-18023-2	SCR,SKT CAP (M4X12) MOUNT BLOCK	31
-	1	1	1	1	1	1	1320908-2	SPACER, STRIP GUIDE	30
-	1	1	1	1	1	1	1633073-1	STRIP GUIDE PLATE ASSY	29
-	1	1	1	1	1	1	1-455888-6	SPACER, FRONT SHEAR DEP	28
-	2	2	2	2	2	2	1-22284-0	SPRING, DRAG	27
-	1	1	1	1	1	1	356835-1	LEVER, DRAG RELEASE	26
-	1	1	1	1	1	1	240792-1	DRAG, TERMINAL	25
-	1	1	1	1	1	1	1320928-1	PLATE, STRIP GUIDE	24
-	1	1	1	1	1	1	980371-4	SCR,SHC SHLD	23
-	1	-	1	1	-	1	690472-2	STRIPPER	22
-	1	1	1	1	1	1	1-18023-1	SCR,SHC (M4X10) STRIPPER	21
-	4	4	4	4	4	4	18025-2	WASHER,LOCK (M4) STRIPPER	20
-	-	1	-	-	1	-	690472-1	STRIPPER	19
									18
-	1	-	-	1	-	-	1338684-1	HOLDER, SHEAR, FRONT (NO-CUT)	17
									16
									15

# Mouser Electronics

Authorized Distributor

Click to View Pricing, Inventory, Delivery & Lifecycle Information:

[TE Connectivity:](#)

[1528343-1](#)