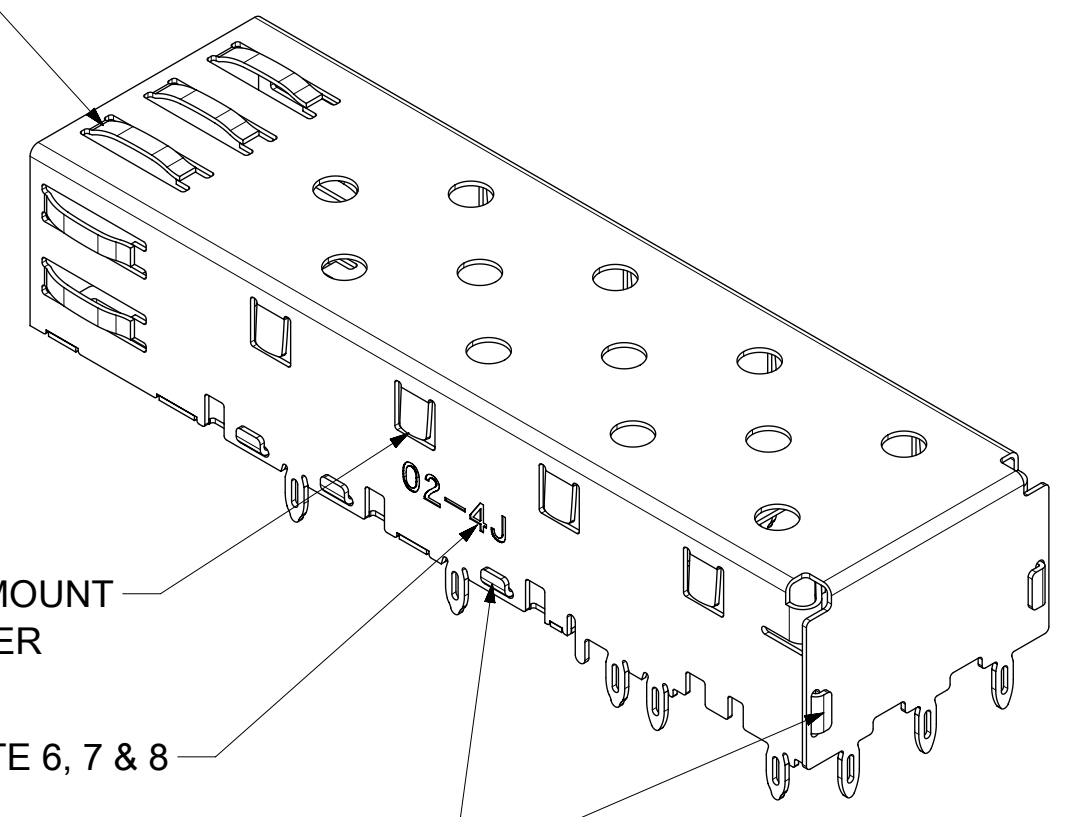


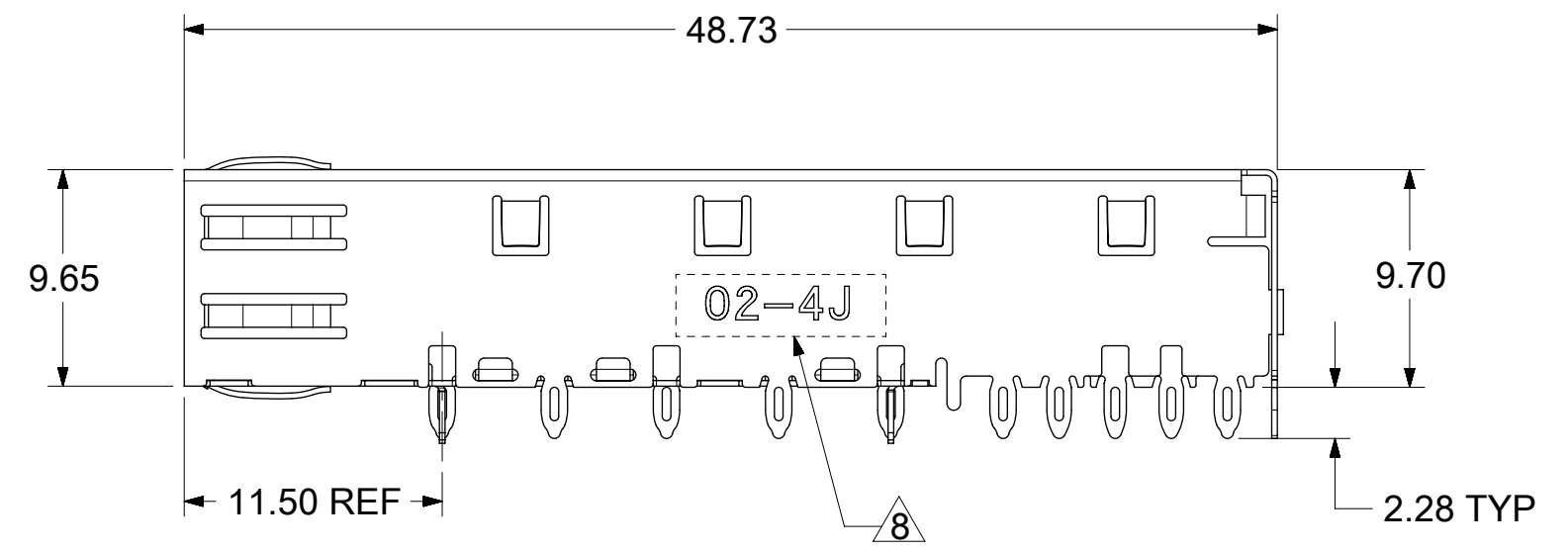
SPRING FINGER GASKET WITH TWO POINTS OF CONTACT. COMPLIES WITH (SFP) MSA BOARD AND BEZEL LOCATIONS.



TABS USED TO MOUNT LIGHT PIPE COVER

SEE NOTE 6, 7 & 8

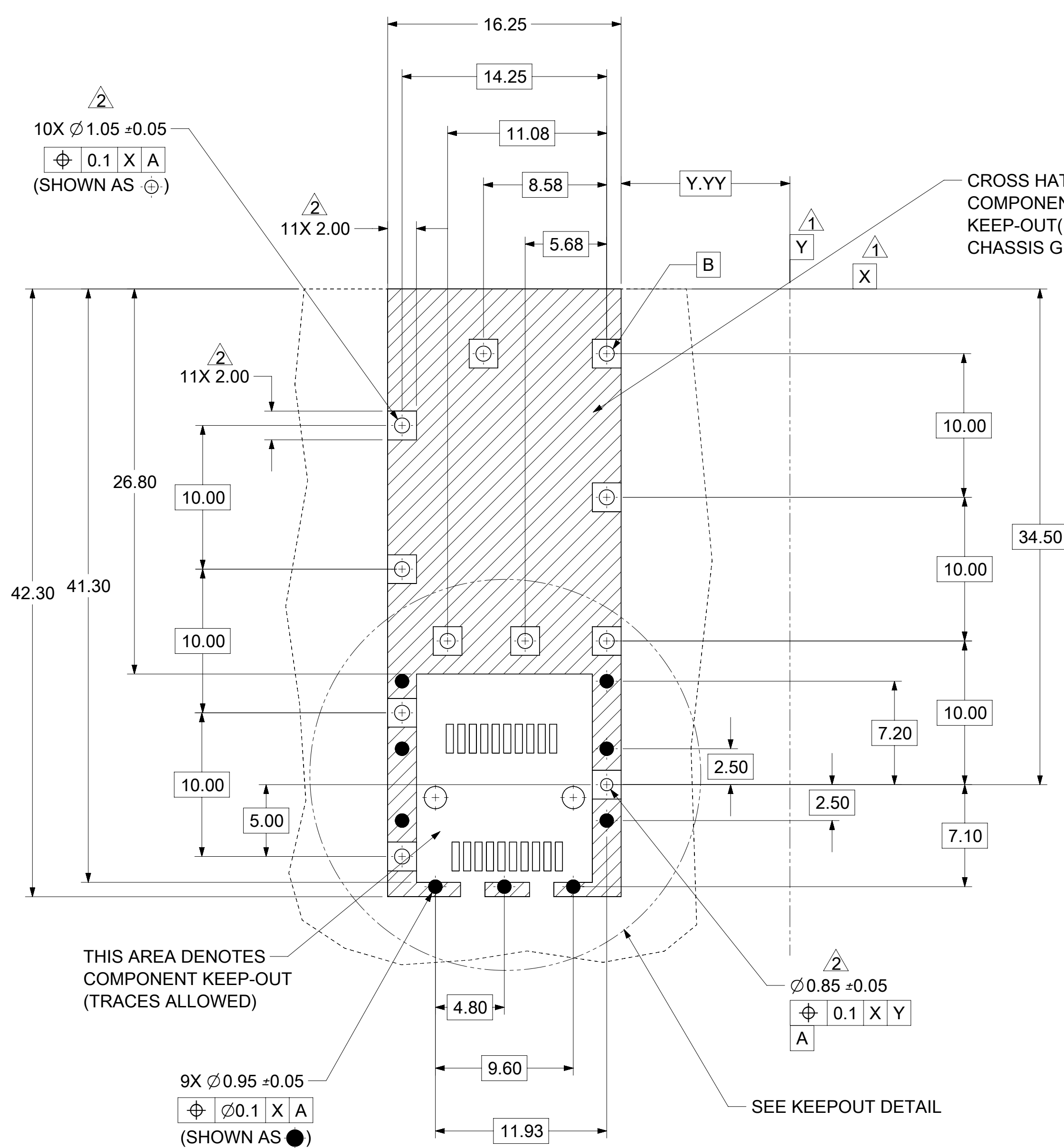
ONE PIECE DESIGN SECURLY FASTENED



NOTES:

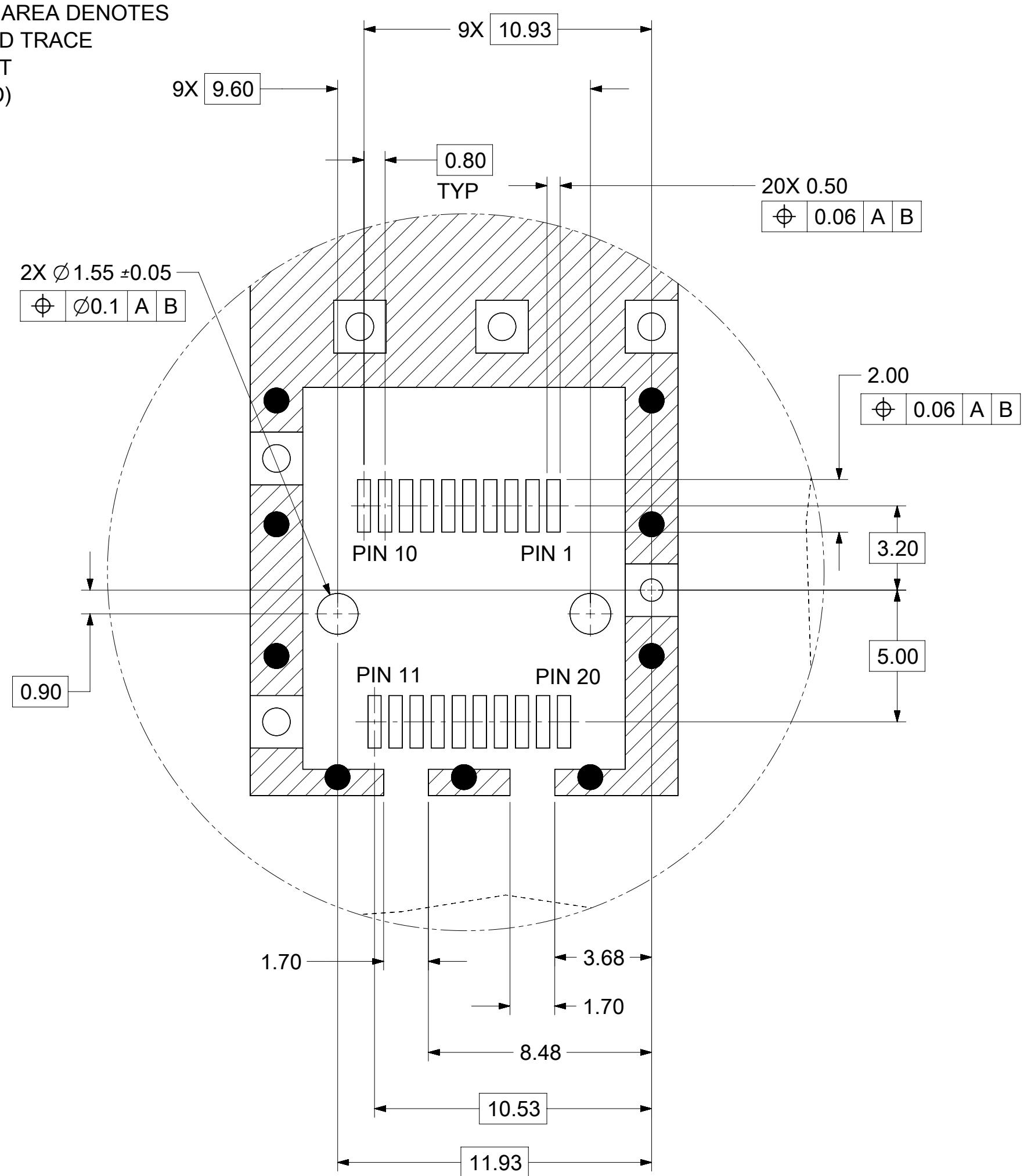
1. PRESS FIT LEGS, 2.28mm LONG.
1.57mm MINIMUM PCB THICKNESS.
2. THIS CAGE IS FOR SINGLE SIDED USE ONLY.
3. CAN BE USED WITH THE FOLLOWING LIGHT PIPE PART NUMBERS:
747260001 - LIGHT PIPE FROM BACK TO TOP
(REFER TO DOCUMENT SD-74726-001)
747260002 - LIGHT PIPE FROM SIDE TO TOP
(REFER TO DOCUMENT SD-74726-002)
4. MATERIAL: COPPER ALLOY
PLATING: PRE-PLATED WITH NICKEL
5. NO RoHS EXEMPTIONS.
6. REVISION LETTER IS FOLLOWING MOLEX 3D MODEL.
7. INSERT TO CHANGE ENGRAVING FOR LAST TWO DIGITS OF PART NUMBER OR 3D REVISION.
8. INSERT TO IDENTIFY ADDITIONAL TOOLING STARTING WITH TOOL #2 AS FOLLOWS:
LAST TWO DIGITS OF PART NUMBER, TOOL NUMBER AND ENGINEERING DRAWING REVISION LETTER (INTERNAL USE).
(E.G., 02-4J)

QUALITY SYMBOLS		THIS DRAWING CONTAINS INFORMATION THAT IS PROPRIETARY TO MOLEX ELECTRONIC TECHNOLOGIES, LLC AND SHOULD NOT BE USED WITHOUT WRITTEN PERMISSION									
▽ = 0	▽ = 0	SEE REVISION TABLE	EC NO: 169609 DRWN: MKEMPEGOWDA CHKD: EWANG07 REV / APPR: RCHEN08	2017/12/11 2017/12/15 2017/12/16	GENERAL TOLERANCES (UNLESS SPECIFIED)		DIMENSION UNITS	SCALE	molex		
▽ = 0	▽ = 0				ANGULAR TOL ± 1.0 °		mm	3:1			
▽ = 0	▽ = 0				4 PLACES ±	DRWN BY	DATE	SFP ONE PIECE CAGE PRESS-FIT (0.090 LEGS)			
▽ = 0	▽ = 0				3 PLACES ±	MKEMPEGOWDA	2017/12/11				
▽ = 0	▽ = 0				2 PLACES ± 0.13	CHKD BY	DATE	PRODUCT CUSTOMER DRAWING			
▽ = 0	▽ = 0				1 PLACE ± 0.25	EWANG07	2017/12/15				
▽ = 0	▽ = 0	0 PLACES ±	APPR BY	DATE	SERIES	MATERIAL NUMBER	CUSTOMER	DOCUMENT NUMBER 747370002			
▽ = 0	▽ = 0	DRAFT WHERE APPLICABLE MUST REMAIN WITHIN DIMENSIONS	RCHEN08	2017/12/16	74737	747370002					DOC TYPE PSD
▽ = 0	▽ = 0		J		DRAWING SIZE	THIRD ANGLE PROJECTION	C				



CROSS HATCHED AREA DENOTES COMPONENTS AND TRACE KEEP-OUT (EXCEPT CHASSIS GROUND)

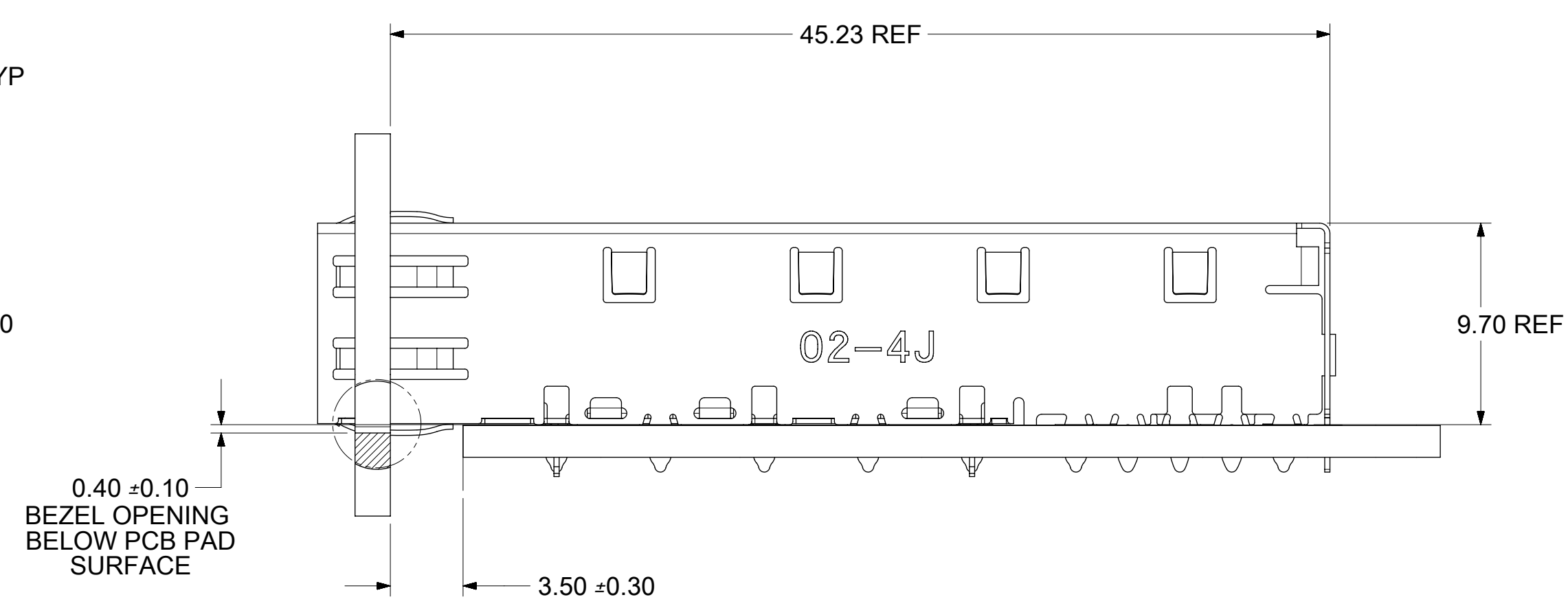
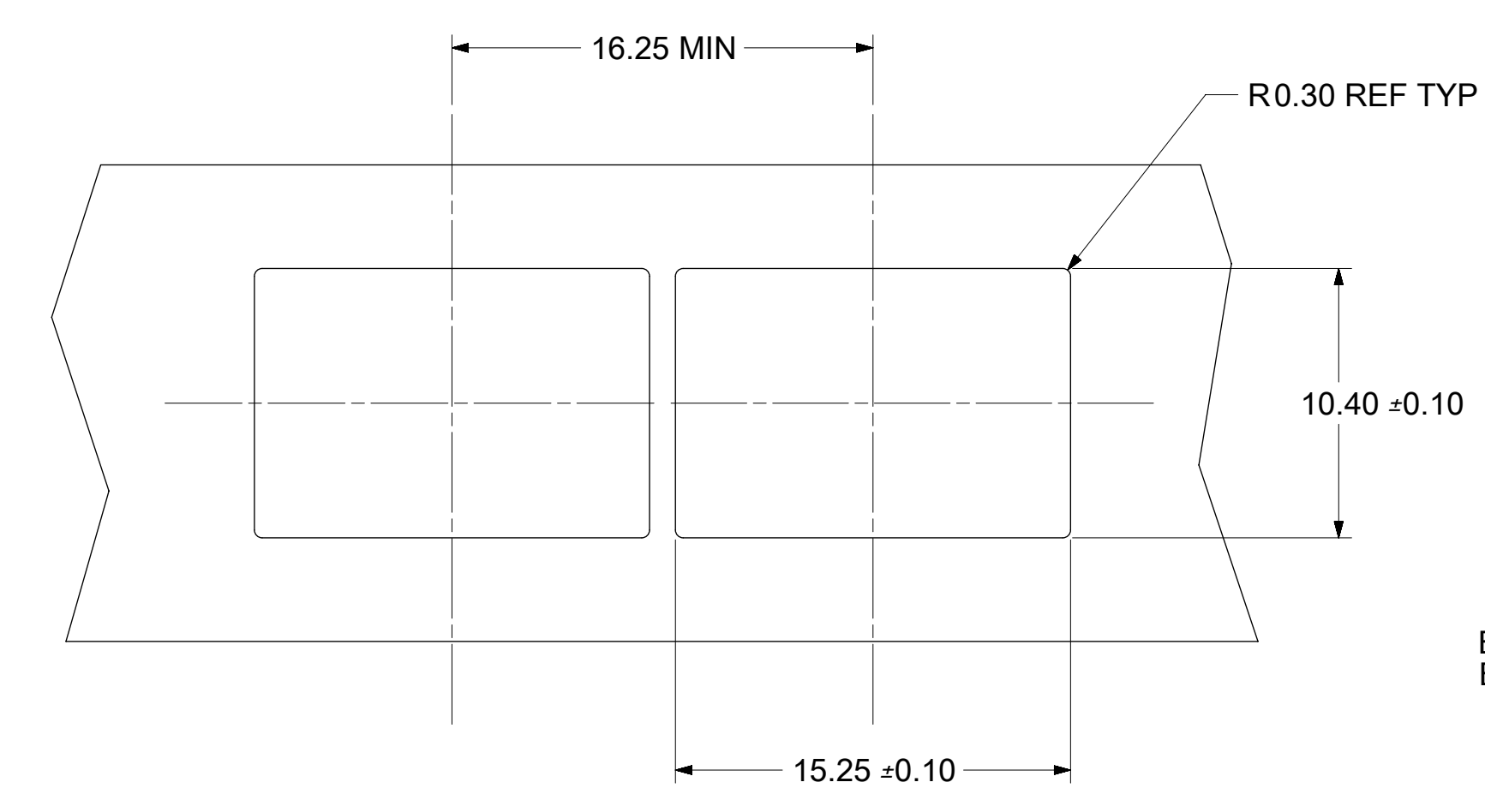
THIS AREA DENOTES COMPONENT KEEP-OUT (TRACES ALLOWED)



KEEPOUT DETAIL
SCALE 6:1


- 1 DATUM AND BASIC DIMENSIONS ESTABLISHED BY CUSTOMER.
- 2 PADS AND VIAS ARE CHASSIS GROUND.
- 3 HOLE LAYOUT SHOWN IS FOR SINGLE SIDED MOUNTING ONLY.
- 4. CONNECTOR PAD LAYOUT PER SFP MSA, WILL ACCOMODATE MOLEX CONNECTOR SERIES 74441 OR EQUIVALENT.

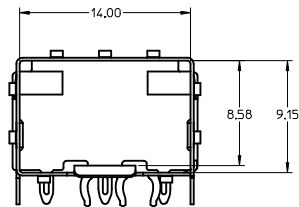
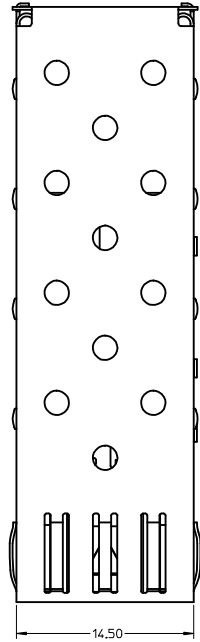
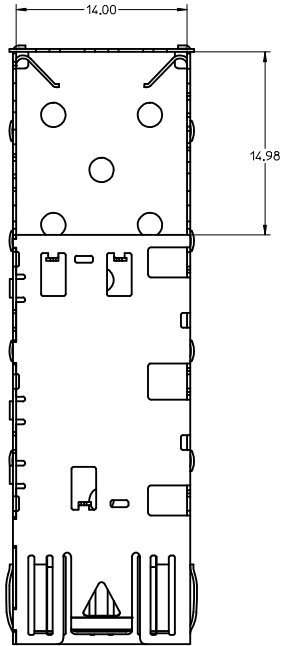
QUALITY SYMBOLS		THIS DRAWING CONTAINS INFORMATION THAT IS PROPRIETARY TO MOLEX ELECTRONIC TECHNOLOGIES, LLC AND SHOULD NOT BE USED WITHOUT WRITTEN PERMISSION		DIMENSION UNITS		SCALE		molex	
▽ = 0	▽ = 0	mm	4:1	DRWN BY		DATE			
▽ = 0	▽ = 0	GENERAL TOLERANCES (UNLESS SPECIFIED)		MKEMPEGOWDA		2017/12/11		SFP ONE PIECE CAGE PRESS-FIT (0.090 LEGS)	
▽ = 0	▽ = 0	ANGULAR TOL ± 1.0 °		CHK'D BY		DATE			
▽ = 0	▽ = 0	4 PLACES ±		EWANG07		2017/12/15		PRODUCT CUSTOMER DRAWING	
▽ = 0	▽ = 0	3 PLACES ±		RCHEN08		2017/12/16			
▽ = 0	▽ = 0	2 PLACES ± 0.13		DRAWING SIZE		THIRD ANGLE PROJECTION		SERIES	
▽ = 0	▽ = 0	1 PLACE ± 0.25		C		74737		MATERIAL NUMBER	
▽ = 0	▽ = 0	0 PLACES ±		DRAFT WHERE APPLICABLE MUST REMAIN WITHIN DIMENSIONS		747370002		CUSTOMER	
▽ = 0	▽ = 0	SEE REVISION TABLE		J		747370002		DOCUMENT NUMBER	
▽ = 0	▽ = 0	EC NO: 169609		REV		747370002		DOC TYPE	
▽ = 0	▽ = 0	2017/12/11		2017/12/15		747370002		PSD	
▽ = 0	▽ = 0	2017/12/16		2017/12/16		747370002		DOC PART	
▽ = 0	▽ = 0	DRWN: MKEMPEGOWDA		RCHEN08		747370002		SHEET NUMBER	
▽ = 0	▽ = 0	CHKD: EWANG07		RCHEN08		747370002		2 OF 4	
▽ = 0	▽ = 0	APP: RCHEN08		RCHEN08		747370002			



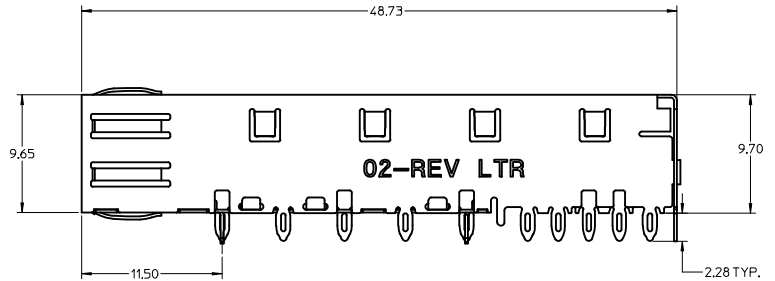
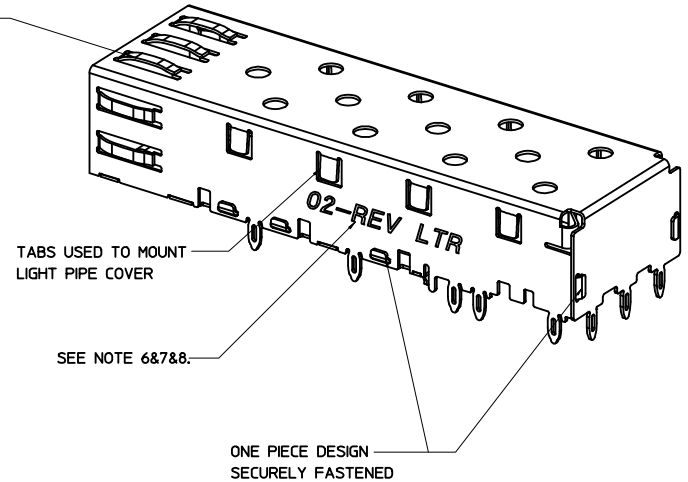
QUALITY SYMBOLS ▽ = 0 ▽ = 0 ▽ = 0 ▼ = 0 ▽ = 0 ☒ = 0 ■ = 0 ▽ = 0	THIS DRAWING CONTAINS INFORMATION THAT IS PROPRIETARY TO MOLEX ELECTRONIC TECHNOLOGIES, LLC AND SHOULD NOT BE USED WITHOUT WRITTEN PERMISSION	GENERAL TOLERANCES (UNLESS SPECIFIED) ANGULAR TOL ± 1.0 ° 4 PLACES ± 3 PLACES ± 2 PLACES ± 0.13 1 PLACE ± 0.25 0 PLACES ±	DIMENSION UNITS	SCALE	
			mm	4:1	
SEE REVISION TABLE EC NO: 169609 DRWN: MKEMPEGOWDA CHKD: EWANG07 REV / APPR: RCHEN08		2017/12/11 2017/12/15 2017/12/16	DRWN BY MKEMPEGOWDA	DATE 2017/12/11	SFP ONE PIECE CAGE PRESS-FIT (0.090 LEGS)
DRAFT WHERE APPLICABLE MUST REMAIN WITHIN DIMENSIONS		02-4J	CHKD BY EWANG07	DATE 2017/12/15	
J		RCHEN08	APPR BY RCHEN08	DATE 2017/12/16	SERIES 74737
C		THIRD ANGLE PROJECTION	DRAWING SIZE C	MATERIAL NUMBER 747370002	CUSTOMER
RELEASE STATUS P1 RELEASE DATE 16.12.2017 15:45:08		DOCUMENT NUMBER 747370002	DOC TYPE PSD	DOC PART ASY	SHEET NUMBER 3 OF 4

REV	DATE	DESCRIPTION
A	2007/01/17	INITIAL RELEASE
B	2007/01/24	UPDATED VIEWS
C	2007/02/08	ADDED NOTE 5
D	2007/03/06	ADDED SHEETS 2 AND 3
E	2007/01/23	UPDATED 2D VIEWS TO REFLECT CHG'S MADE TO EM-74737-004 REV E.
F	2007/04/25	[1] ADDED REV SHEET; [2] UPDATED REV NOTES A-D; [3] UPDATED DRAWING TO REFLECT CHG'S MADE TO EM-74737-002-ASSY REV D; [4] ON SHT1 ROTATED BTM_VIEW 180 DEGREES.
G	2007/11/27	[1] UPDATED VIEWS TO MATCH EM-74737-002-ASSY REV E.
H	2014/12/02	1. ADDED "MM 3D MODEL: EM-74737-004-ASSY" ON LEFT TOP CORNER. [SHEET 1] 2. ADDED NOTE 6, 7, 8. [SHEET 1] 3. CHANGED NOTE5 TO "NO RoHS EXEMPTIONS". [SHEET 1] 4. REMOVED ALL INCH UNIT. [SHEET 1~3]
J	2017/12/14	REMASTERED FROM SD-74737-002 REV H TO 747370002 PSD ASY REV J SHEET 1: A12: CHANGED EG IN NOTE 8 FROM (E.G., 02-3J) TO (E.G., 02-4J)

QUALITY SYMBOLS	THIS DRAWING CONTAINS INFORMATION THAT IS PROPRIETARY TO MOLEX ELECTRONIC TECHNOLOGIES, LLC AND SHOULD NOT BE USED WITHOUT WRITTEN PERMISSION												
▽ = 0	SEE REVISION TABLE EC NO: 169609 DRWN: MKEMPEGOWDA CHKD: EWANG07 REV / APPR: RCHEN08	2017/12/11 2017/12/15 2017/12/16	GENERAL TOLERANCES (UNLESS SPECIFIED)		DIMENSION UNITS	SCALE							
▽ = 0			ANGULAR TOL ± 1.0 °		mm	1:1							
▽ = 0			4 PLACES ±	DRWN BY	DATE	MKEMPEGOWDA					2017/12/11		
▽ = 0			3 PLACES ±	CHKD BY	DATE	EWANG07	2017/12/15						
▽ = 0			2 PLACES ± 0.13	APPR BY	DATE	RCHEN08	2017/12/16						
▽ = 0			1 PLACE ± 0.25	DRAFT WHERE APPLICABLE MUST REMAIN WITHIN DIMENSIONS		DRAWING SIZE	THIRD ANGLE PROJECTION	PRODUCT CUSTOMER DRAWING					
▽ = 0			0 PLACES ±	C	SERIES		MATERIAL NUMBER	CUSTOMER	SFP ONE PIECE CAGE PRESS-FIT (0.090 LEGS)				
▽ = 0			74737		747370002		DOCUMENT NUMBER				PSD	DOC PART	SHEET NUMBER
▽ = 0			747370002		4 OF 4								



SPRING FINGER GASKET WITH TWO POINTS OF CONTACT. COMPLIES WITH (SFP) MSA BOARD AND BEZEL LOCATIONS.

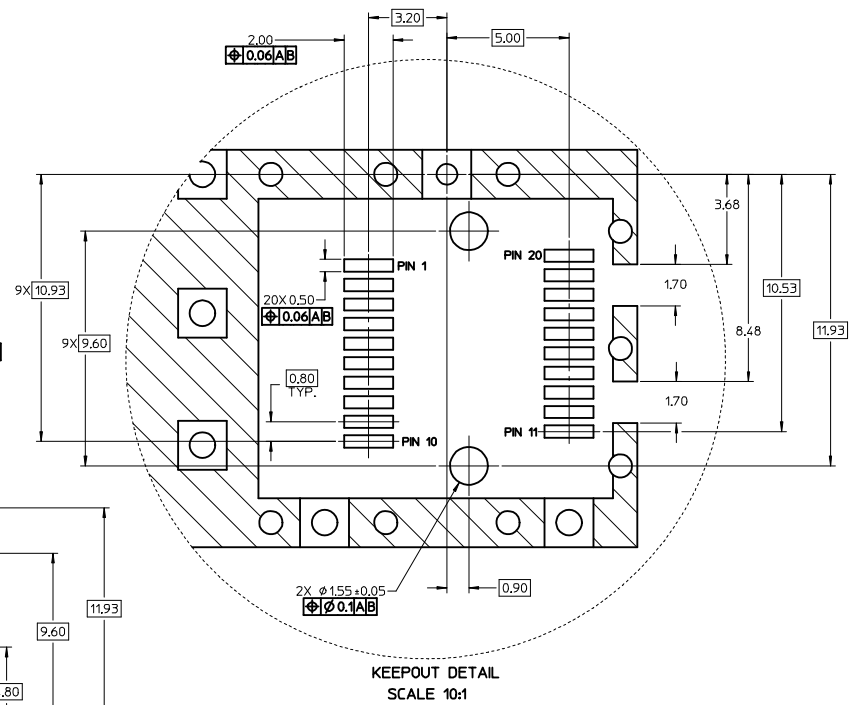
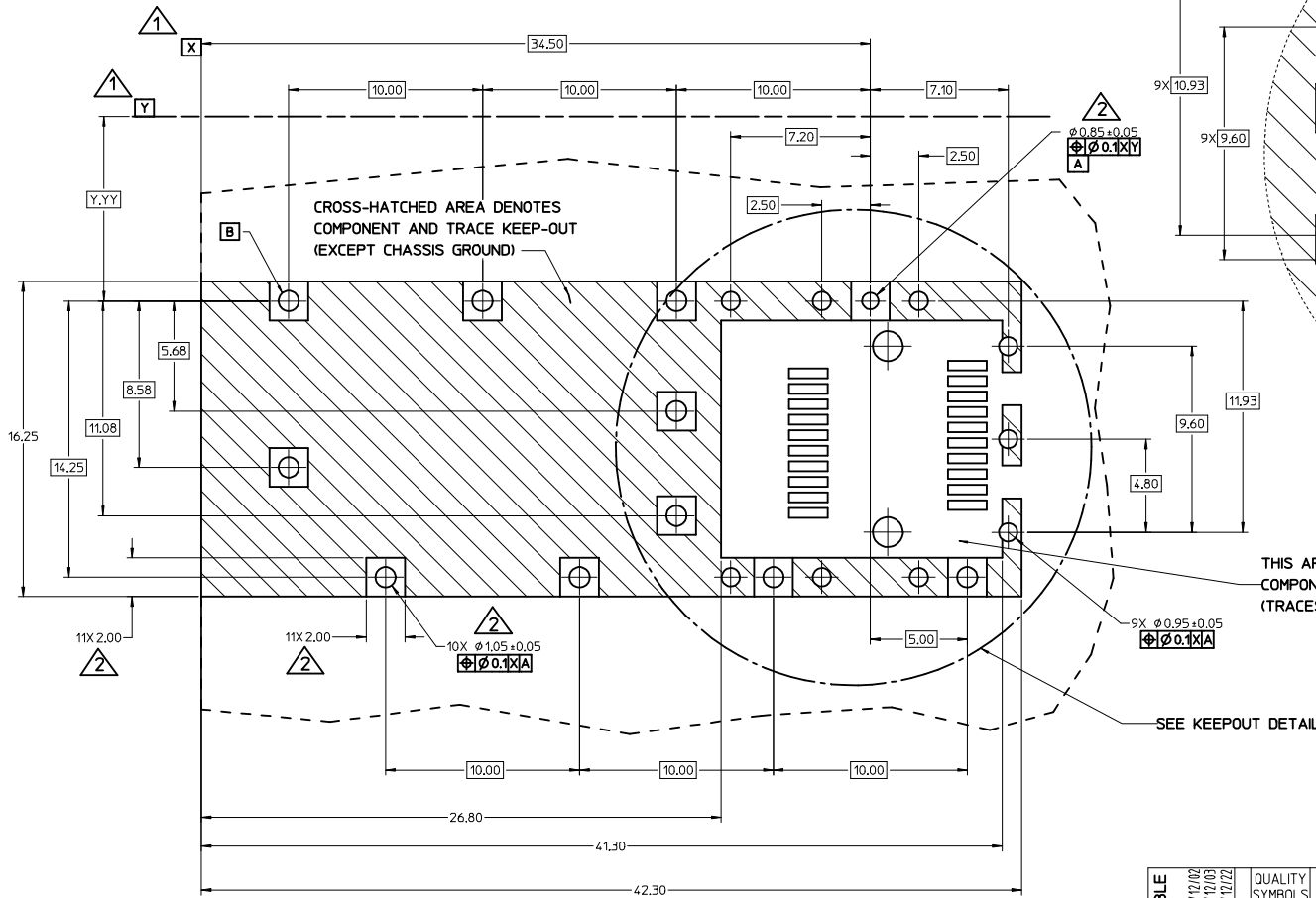


NOTES:

1. PRESS FIT LEGS, 2.28mm LONG.
1.57mm MINIMUM PCB THICKNESS.
2. THIS CAGE IS FOR SINGLE SIDED USE ONLY.
3. CAN BE USED WITH THE FOLLOWING LIGHT PIPE PART NUMBERS:
747260001 - LIGHT PIPE FROM BACK TO TOP
(REFER TO DOCUMENT SD-74726-001)
747260002 - LIGHT PIPE FROM SIDE TO TOP
(REFER TO DOCUMENT SD-74726-002)
4. MATERIAL: COPPER ALLOY
PLATING: PRE-PLATED WITH NICKEL
5. NO RoHS EXEMPTIONS.
6. REVISION LETTER IS FOLLOWING MOLEX 3D MODEL.
7. INSERT TO CHANGE ENGRAVING FOR LAST TWO DIGITS OF PART NUMBER OR 3D REVISION.
8. INSERT TO IDENTIFY ADDITIONAL TOOLING STARTING WITH TOOL #2 AS FOLLOWS:
LAST TWO DIGITS OF PART NUMBER, TOOL NUMBER AND REVISION LETTER
(E.G., 02-3J)

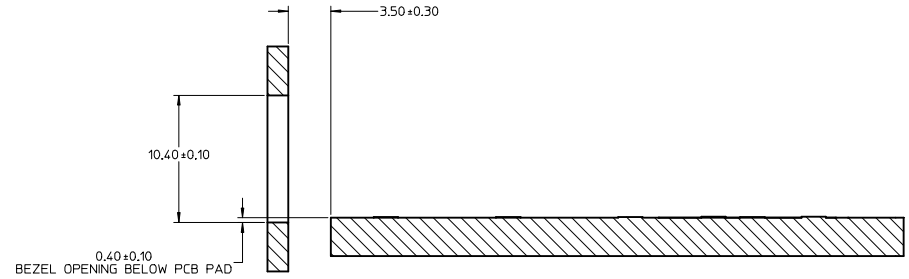
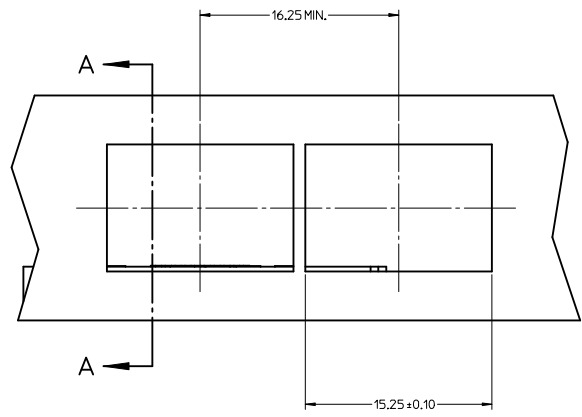
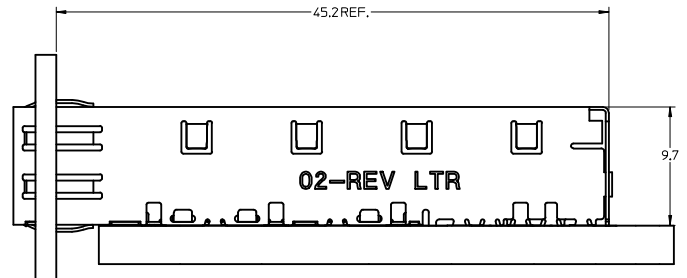
SEE REVISION TABLE IEC NO: CPG2015-2800 DRAWN BY: DRWN:LUZ0 CHECKED BY: CHYKSYANG16 APPROVED BY: APPR:RCHEN08 DATE: 2014/12/02 DATE: 2014/12/03 DATE: 2014/12/22	QUALITY SYMBOLS ∇=0 ∇=0 ∇=0	GENERAL TOLERANCES (UNLESS SPECIFIED) mm INCH 4 PLACES ± --- ± --- 3 PLACES ± --- ± --- 2 PLACES ± 0.13 ± --- 1 PLACE ± 0.25 ± --- 0 PLACE ± ± ANGULAR ± 1 ° DRAFT WHERE APPLICABLE MUST REMAIN WITHIN DIMENSIONS	DIMENSION STYLE MM ONLY SCALE 5:1 DESIGN UNITS METRIC THIRD ANGLE PROJECTION	DRAWN BY: CCOX DATE: 2007/01/18 CHECKED BY: RMAHMOOD DATE: 2007/01/18 APPROVED BY: RMAHMOOD DATE: 2007/01/18	TITLE SFP ONE PIECE CAGE PRESS-FIT (0.090 LEGS)	
	MATERIAL NO. 747370002		DOCUMENT NO. SD-74737-002		SHEET NO. 1 OF 4	
	molex					
	THIS DRAWING CONTAINS INFORMATION THAT IS PROPRIETARY TO MOLEX INCORPORATED AND SHOULD NOT BE USED WITHOUT WRITTEN PERMISSION					

- 1. DATUM AND BASIC DIMENSIONS ESTABLISHED BY CUSTOMER.
- 2. PADS AND VIAS ARE CHASSIS GROUND.
- 3. HOLE LAYOUT SHOWN IS FOR SINGLE SIDED MOUNTING ONLY.
- 4. CONNECTOR PAD LAYOUT PER SFP MSA, WILL ACCOMMODATE MOLEX CONNECTOR SERIES 74441 OR EQUIVALENT.



SEE REVISION TABLE IEC NO: CPG2015-2800 DRAWN BY: DRWNLU20 CHECKED BY: CHYKSYANG16 APPROVED BY: APPRRCHE08 DATE: 2014/12/02 DATE: 2014/12/03 DATE: 2014/12/22	QUALITY SYMBOLS	GENERAL TOLERANCES (UNLESS SPECIFIED)	DIMENSION STYLE	SCALE	DESIGN UNITS	THIRD ANGLE PROJECTION
	▽=0	mm	MM ONLY	8:1	METRIC	☉
	▽=0	INCH	4 PLACES ± ---	DRAWN BY: CCOX	DATE: 2007/01/18	TITLE: SFP ONE PIECE CAGE PRESS-FIT (0.090 LEGS)
	▽=0	ANGULAR ± 1 °	3 PLACES ± ---	CHECKED BY: RMAHMOOD	DATE: 2007/01/18	APPROVED BY: RMAHMOOD
▽=0	DRAFT WHERE APPLICABLE MUST REMAIN WITHIN DIMENSIONS	2 PLACES ± 0.13	1 PLACE ± 0.25	0 PLACE ±	MATERIAL NO: 747370002	DOCUMENT NO: SD-74737-002
					SHEET NO. 2 OF 4 THIS DRAWING CONTAINS INFORMATION THAT IS PROPRIETARY TO MOLEX INCORPORATED AND SHOULD NOT BE USED WITHOUT WRITTEN PERMISSION	

20 19 18 17 16 15 14 13 12 11 10 9 8 7 6 5 4 3 2 1

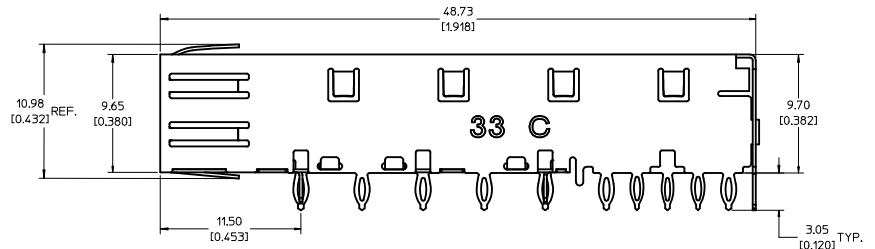
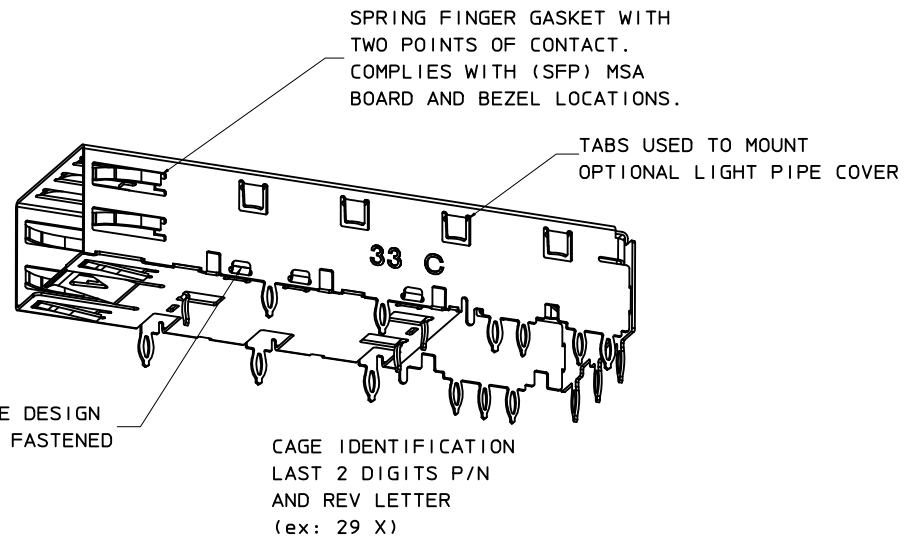
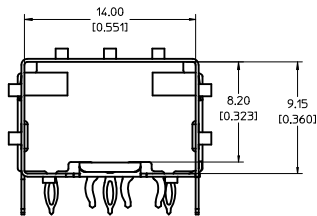
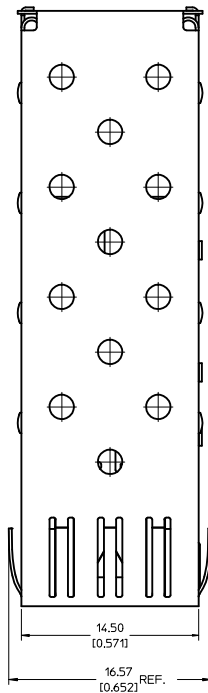
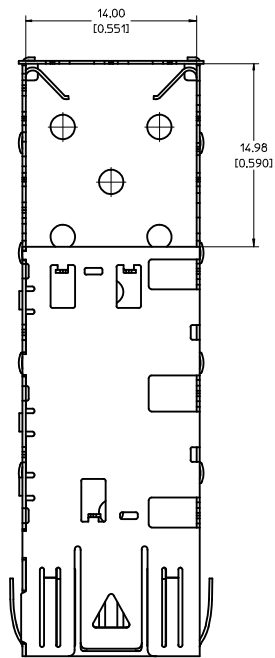


SECTION A-A

SEE REVISION TABLE EC NO: CPG2015-2800 DRW: LUL20 2014/12/02 CHK: DSYANG 2014/12/03 APPR: RCHEN08 2014/12/22	QUALITY SYMBOLS	GENERAL TOLERANCES (UNLESS SPECIFIED)	DIMENSION STYLE	SCALE	DESIGN UNITS	THIRD ANGLE PROJECTION
	▽=0	mm INCH	MM ONLY	5:1	METRIC	
	▽=0	4 PLACES ± --- ± ---				
	▽=0	3 PLACES ± --- ± ---				
		ANGULAR ± 1 °	DRAWN BY	DATE	TITLE	
		DRAFT WHERE APPLICABLE MUST REMAIN WITHIN DIMENSIONS	CCOX	2007/01/18	SFP ONE PIECE CAGE PRESS-FIT (0.090 LEGS)	
			CHECKED BY	DATE		
			RAHMOOD	2007/01/18		
			APPROVED BY	DATE		
			RAHMOOD	2007/01/18		
			MATERIAL NO.	DOCUMENT NO.		
			747370002	SD-74737-002		
			SIZE	THIS DRAWING CONTAINS INFORMATION THAT IS PROPRIETARY TO MOLEX INCORPORATED AND SHOULD NOT BE USED WITHOUT WRITTEN PERMISSION		
			D			

DATE	REV	REVISION TABLE
2007/01/17	A	INITIAL RELEASE
2007/01/24	B	UPDATED VIEWS
2007/02/08	C	ADDED NOTE 5
2007/03/06	D	ADDED SHEETS 2 AND 3
2007/01/23	E	UPDATED 2D VIEWS TO REFLECT CHG'S MADE TO EM-74737-002 REV E.
2007/04/25	F	[1] ADDED REV SHEET, [2] UPDATED REV NOTES A-D, [3] UPDATED DRAWING TO REFLECT CHG'S MADE TO EM-74737-002-ASSY REV D, [4] ON SHT1 ROTATED BTM_VIEW 180 DEGREES.
2007/11/27	G	[1] UPDATED VIEWS TO MATCH EM-74737-002-ASSY REV E.
2014/12/02	H	1. ADDED *MM 3D MODEL: EM-74737-002-ASSY* ON LEFT TOP CORNER. [SHEET 1] 2. ADDED NOTE 6, 7, 8. [SHEET 1] 3. CHANGED NOTE5 TO *NO RoHS EXEMPTIONS*. [SHEET 1] 4. REMOVED ALL INCH UNIT. [SHEET 1~3]

SEE REVISION TABLE IEC NO: CPG2015-2800 DRAWN BY: DRWNLJL20 2014/12/02 CHECKED BY: CHYKOSYANG16 2014/12/03 APPROVED BY: APPRRCHEEN08 2014/12/22 REV:	QUALITY SYMBOLS	GENERAL TOLERANCES (UNLESS SPECIFIED)	DIMENSION STYLE	SCALE	DESIGN UNITS	THIRD ANGLE PROJECTION
	▽=0	4 PLACES ± mm INCH	MM ONLY	1:1	METRIC	☉
	▽=0	3 PLACES ± 0.13				
	▽=0	2 PLACES ± 0.25				
	ANGULAR ± 1 °	DRAFT WHERE APPLICABLE MUST REMAIN WITHIN DIMENSIONS	DRAWN BY: CCOX DATE: 2007/01/18	CHECKED BY: RMAHMOOD DATE: 2007/01/18	APPROVED BY: RMAHMOOD DATE: 2007/01/18	TITLE: SFP ONE PIECE CAGE PRESS-FIT (0.090 LEGS)
			MATERIAL NO: 747370002	DOCUMENT NO: SD-74737-002	SHEET NO: 4 OF 4	
			THIS DRAWING CONTAINS INFORMATION THAT IS PROPRIETARY TO MOLEX INCORPORATED AND SHOULD NOT BE USED WITHOUT WRITTEN PERMISSION			



NOTES:

- PRESS FIT LEGS, 0.120 INCHES LONG.
1.57 [0.062] MINIMUM PCB THICKNESS.
- THIS CAGE IS FOR SINGLE SIDED USE ONLY.
- CAN BE USED WITH THE FOLLOWING LIGHT PIPE PART NUMBERS:
747260001 - LIGHT PIPE FROM BACK TO TOP
(REFER TO DOCUMENT SD-74726-001)
747260002 - LIGHT PIPE FROM SIDE TO TOP
(REFER TO DOCUMENT SD-74726-002)
- MATERIAL: COPPER ALLOY
PLATING: PRE-PLATED WITH NICKEL
- THIS PART MEETS THE RESTRICTION OF HAZARDOUS SUBSTANCES IN ELECTRICAL AND ELECTRONIC EQUIPMENT (ROHS) DIRECTIVE (2002/95/EC).

REV DIMS-CAGE REV EC NO: USY2010-0515 DRAWN BY: CHYOKI JANOTA APPROV: K JANOTA 2010/05/04	QUALITY SYMBOLS ▽=0 ▽=0	GENERAL TOLERANCES (UNLESS SPECIFIED): <table border="1"> <tr> <th></th> <th>mm</th> <th>INCH</th> </tr> <tr> <td>4 PLACES</td> <td>±0.05</td> <td>±0.002</td> </tr> <tr> <td>3 PLACES</td> <td>±0.025</td> <td>±0.001</td> </tr> <tr> <td>2 PLACES</td> <td>±0.13</td> <td>±0.01</td> </tr> <tr> <td>1 PLACE</td> <td>±0.25</td> <td>±0.01</td> </tr> </table>			mm	INCH	4 PLACES	±0.05	±0.002	3 PLACES	±0.025	±0.001	2 PLACES	±0.13	±0.01	1 PLACE	±0.25	±0.01	DIMENSION STYLE MM/IN	SCALE 5:1	DESIGN UNITS METRIC	THIRD ANGLE PROJECTION
			mm	INCH																		
4 PLACES	±0.05	±0.002																				
3 PLACES	±0.025	±0.001																				
2 PLACES	±0.13	±0.01																				
1 PLACE	±0.25	±0.01																				
DRAFT WHERE APPLICABLE MUST REMAIN WITHIN DIMENSIONS		MATERIAL NO. 747370033	DATE 2009/09/28	DATE 2009/09/28	DATE 2009/09/28	DATE 2009/09/28																

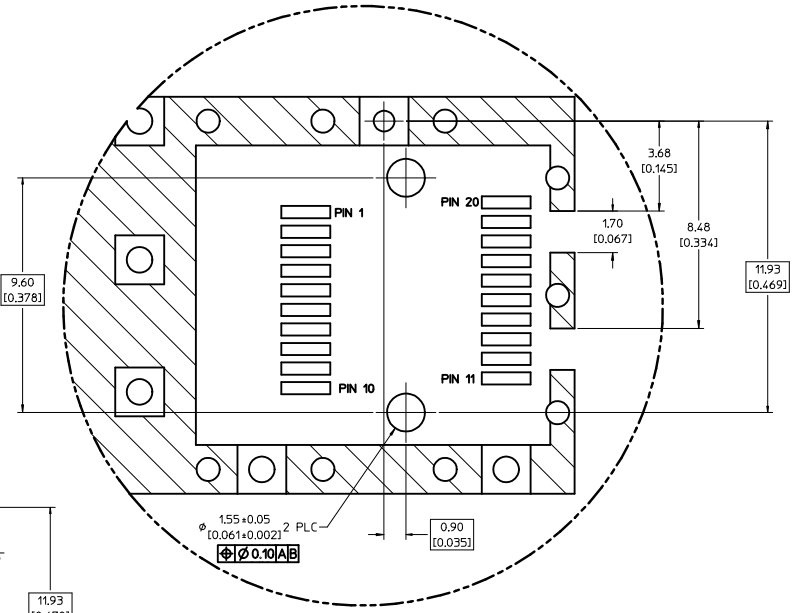
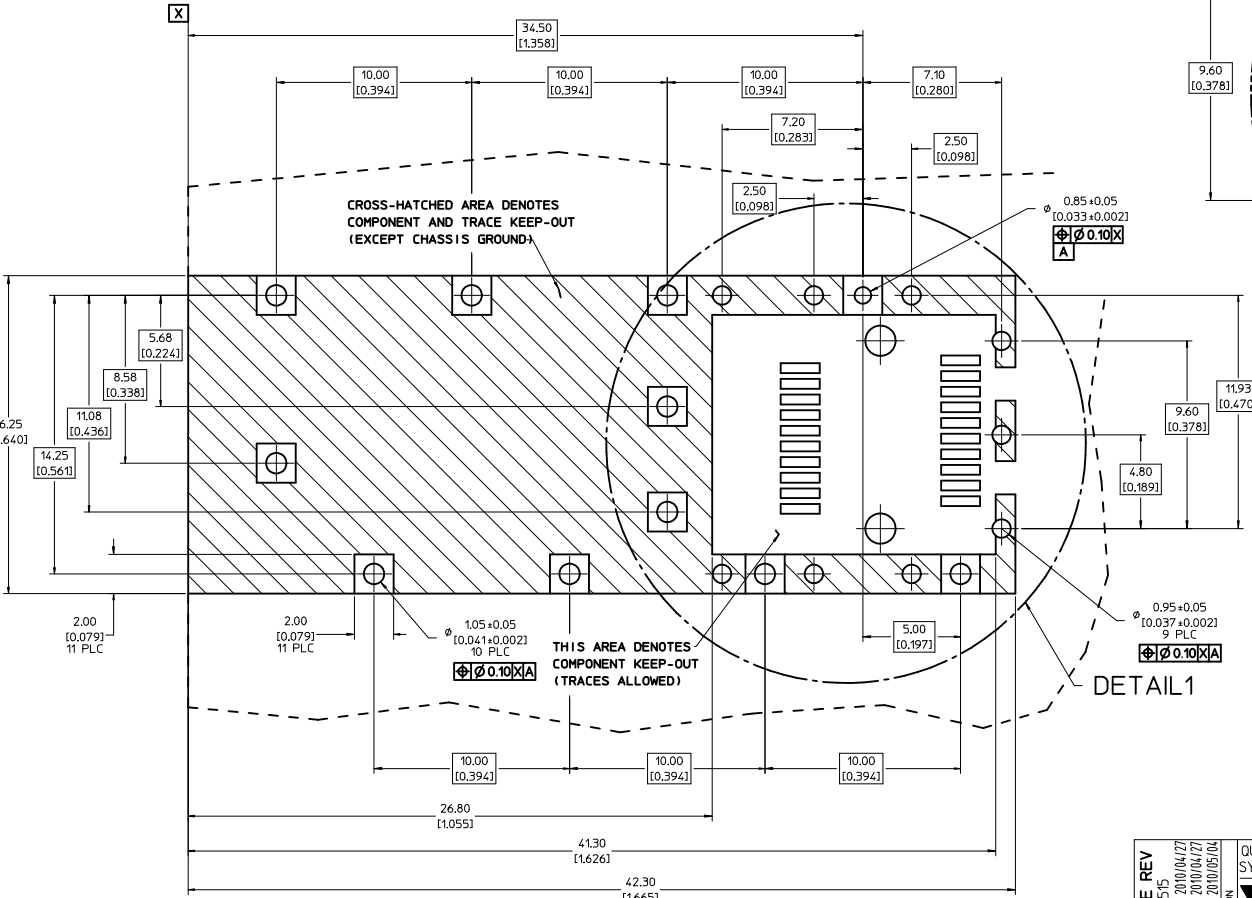
TITLE
SFP ONE PIECE CAGE PRESS-FIT (0.120 LEGS) W/ MODIFIED LATCH TANG

MOLEX INCORPORATED

DOCUMENT NO.
SD-74737-0033

SHEET NO.
 1 OF 3

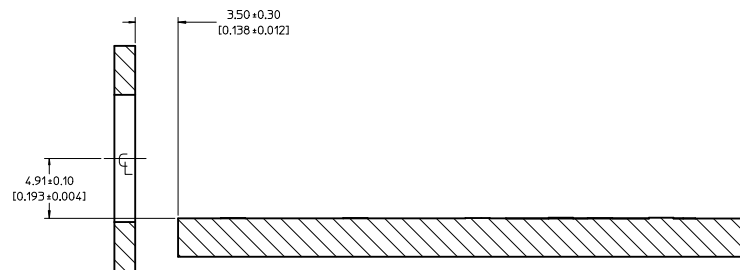
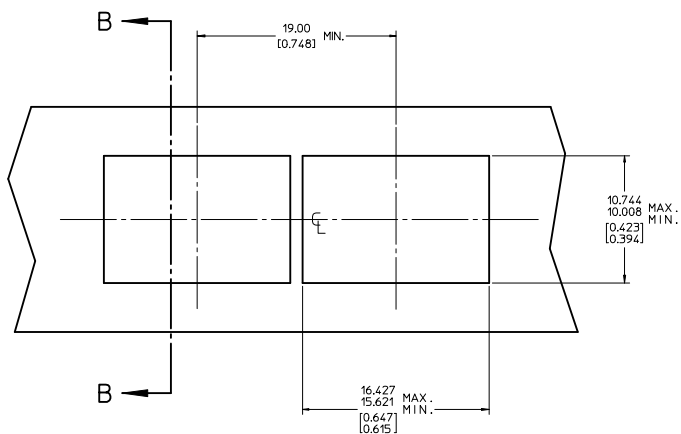
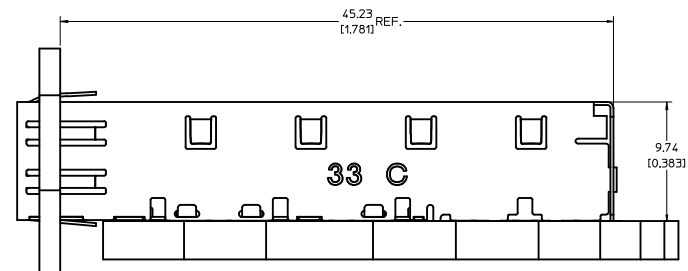
1. PADS AND VIAS ARE CHASSIS GROUND.
2. HOLE LAYOUT SHOWN IS FOR SINGLE SIDED MOUNTING ONLY.
3. CONNECTOR PAD LAYOUT PER SFP MSA, WILL ACCOMMODATE MOLEX CONNECTOR SERIES 74441 OR EQUIVALENT.



DETAIL 1
SCALE 10:1

REV DIMS-CAGE REV IEC NO: USY2010-0515 DRAWN/SECRET 2010/04/27 CHKD/K LANITA 2010/04/27 APPR/K LANITA 2010/05/04	QUALITY SYMBOLS	GENERAL TOLERANCES (UNLESS SPECIFIED)	DIMENSION STYLE	SCALE	DESIGN UNITS	THIRD ANGLE PROJECTION
	▽=0 ▽=0	mm INCH 4 PLACES ± --- ± --- 3 PLACES ± --- ± 0.005 2 PLACES ± 0.13 ± 0.01 1 PLACE ± 0.25 ± --- ANGULAR ± 1 °	MM/IN	8:1	METRIC	DRAWN BY DATE JRESENDE 2009/09/28 CHECKED BY DATE JRESENDE 2009/09/28 APPROVED BY DATE JRESENDE 2009/09/28
	DRAFT WHERE APPLICABLE MUST REMAIN WITHIN DIMENSIONS	MATERIAL NO.	DOCUMENT NO.	TITLE SFP ONE PIECE CAGE PRESS-FIT (0.120 LEGS) W/ MODIFIED LATCH TANG MOLEX INCORPORATED		
	SIZE D	747370033	SD-74737-0033	SHEET NO. 2 OF 3		

20 19 18 17 16 15 14 13 12 11 10 9 8 7 6 5 4 3 2 1



SECTION B-B

REV DIMS-CAGE REV EC NO: USY2010-0515 DRAWN/SECRET CHYOKI/ANITA APPR:K/ANITA 2010/04/27 2010/04/27 2010/05/04	QUALITY SYMBOLS	GENERAL TOLERANCES (UNLESS SPECIFIED)		DIMENSION STYLE	SCALE	DESIGN UNITS	THIRD ANGLE PROJECTION	
	▽=0 ▽=0	mm	INCH	MM/IN	5:1	METRIC		
		4 PLACES ± ---	± ---		DRAWN BY	DATE	TITLE	
		3 PLACES ± ---	± 0.005		JRESENDE	2009/09/28	SFP ONE PIECE CAGE PRESS-FIT (0.120 LEGS) W/ MODIFIED LATCH TANG	
	2 PLACES ± 0.13	± 0.01		CHECKED BY	DATE			
	1 PLACE ± 0.25	± ---		JRESENDE	2009/09/28			
	ANGULAR ± 1°			APPROVED BY	DATE			
				JRESENDE	2009/09/28			
	DRAFT WHERE APPLICABLE MUST REMAIN WITHIN DIMENSIONS			MATERIAL NO.	DOCUMENT NO.			
				747370033	SD-74737-0033			
				SIZE			SHEET NO.	
				D			3 OF 3	
				THIS DRAWING CONTAINS INFORMATION THAT IS PROPRIETARY TO MOLEX INCORPORATED AND SHOULD NOT BE USED WITHOUT WRITTEN PERMISSION				

19 18 17 16 15 14 13 12 11 10 9 8 7 6 5 4 3 2 1