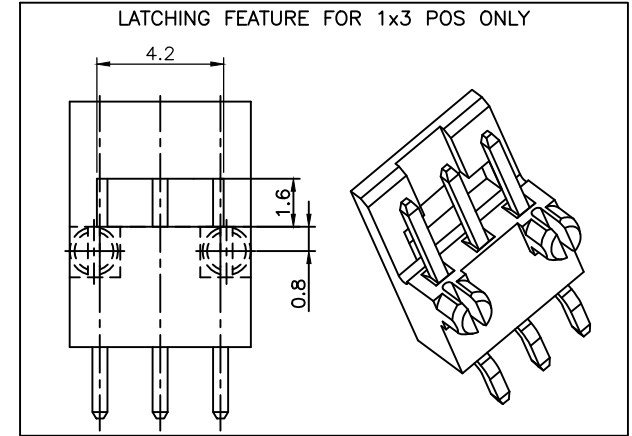
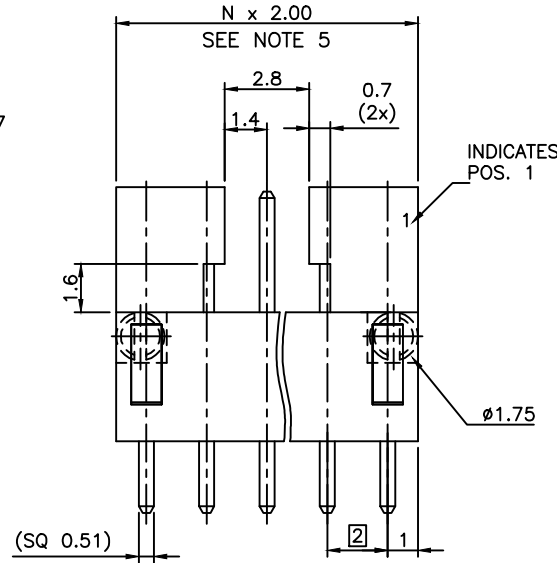


PRODUCT NUMBER
95000-XXXXLF

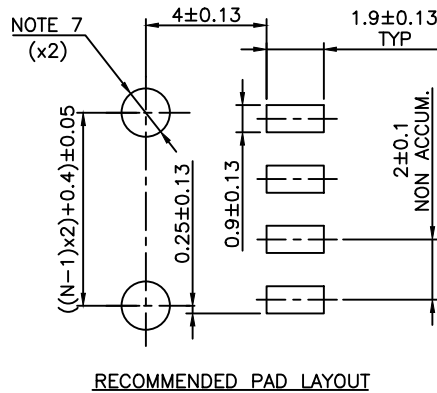
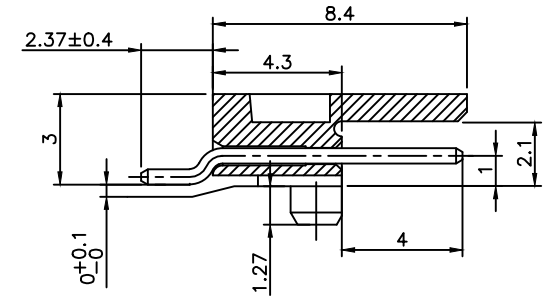
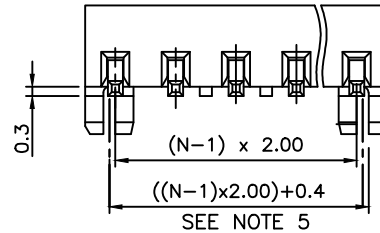
PLATING ————
 ———— RoHS COMPATIBLE, SEE NOTE 6
 ———— PACKAGING TYPE, NOTE 3
 ———— TOTAL NB OF POSITIONS, 3 TO 17

- 0 = 0.20µm GOLD/GXT ON CONTACT AREA
2.0µm MIN MATTE TIN ON TAILS
- 1 = 0.76µm GOLD/GXT ON CONTACT AREA
2.0µm MIN MATTE TIN ON TAILS
- 3 = 0.38µm GOLD/GXT ON CONTACT AREA
2.0µm MIN MATTE TIN ON TAILS
- T = FULL MATTE TIN 2µm-5µm
1.27µm Ni MIN UNDERPLATING



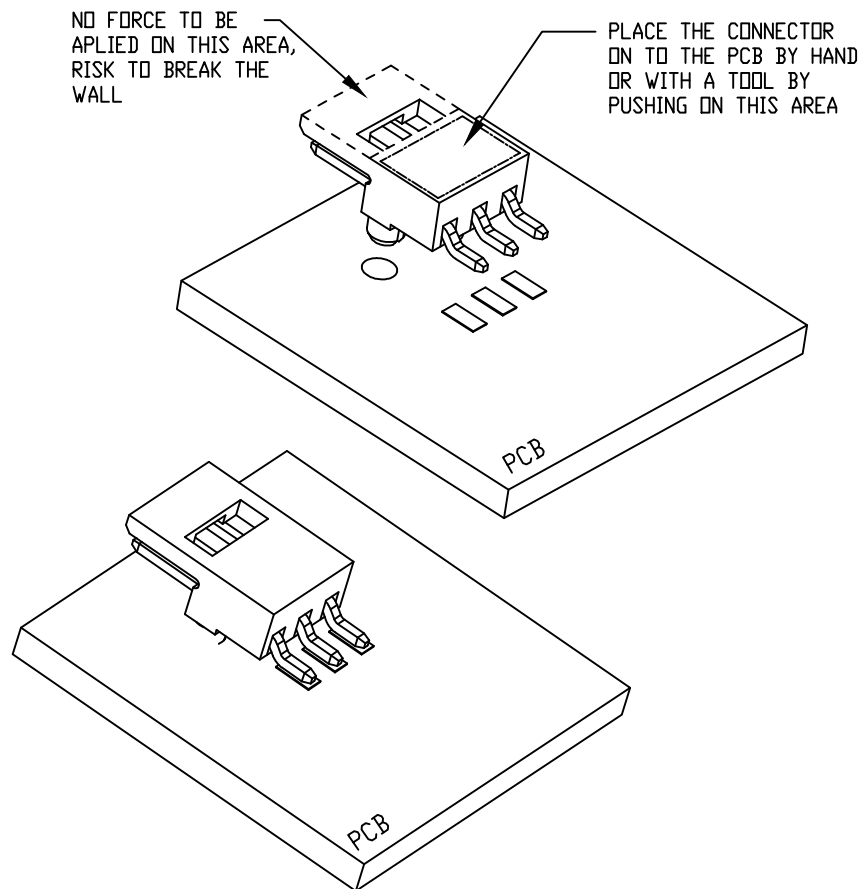
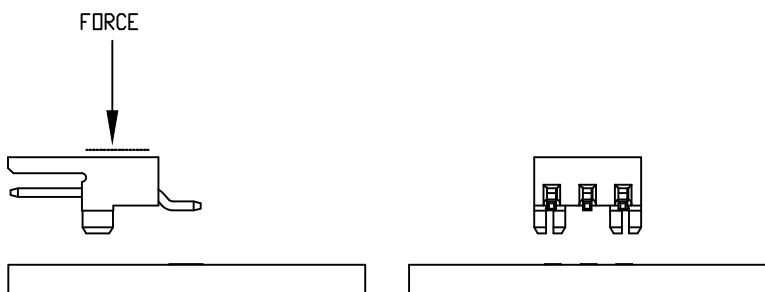
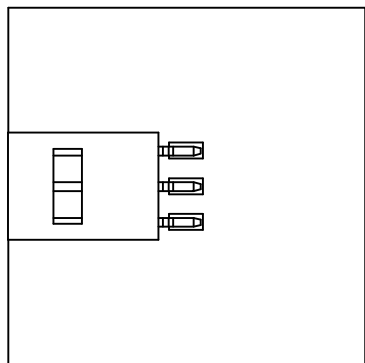
NOTES:

- 1 - HOUSING MAT'L : HIGH TEMPERATURE THERMOPLASTIC. UL94V-0 COLOR: CREAM
- 2 - PIN MATERIAL : COPPER ALLOY
- 3 - PACKAGING :
= POLY BAGS
T = TUBE, FROM 04 POS UP TO 17 POS
TR = TAPE & REEL AS AVAILABLE.
- 4 - 7N MIN RETENTION IN EITHER DIRECTION
- 5 - TO DETERMINE DIMENSIONS :
N = NUMBER OF POSITIONS
- 6 - RoHS COMPATIBLE PRODUCT SPECIFICATIONS
 - a - MANUFACTURING PROCESS COMPATIBILITY
 - THE HOUSING WILL WITHSTAND EXPOSURE TO 260°C PEAK TEMPERATURE FOR 30 SECONDES MAX IN A CONVECTION, INFRA-RED OR VAPOR PHASE OR REFLOW OVEN.
 - b - LABELLING:
 - MEETS PACKAGING SPECS AS PER GS-14-920
 - c - THIS PRODUCT MEETS EUROPEAN DIRECTIVES AND OTHER COUNTRY REGULATIONS AS DISCRIBED IN GS-47-0004
- 7 - HOLE DIMENSION TO BE $\phi 1.60 \pm 0.07$ FOR INTERFERENCE FIT APPLICATIONS, SEE SHEET 2.
HOLE DIMENSION TO BE $\phi 1.95 \pm 0.07$ FOR NON INTERFERENCE FIT (LOCATIONAL) APPLICATIONS



mat'l. code		surface		tolerance		projection		product family	
		ISO 1302 ✓		ISO 406 ISO 1101				MINITEK	
ltr		ecn no dr date		tolerances unless otherwise specified				title	
S		B-19986 JCO 15.01.13		angles				MINITEK SMT HDR SR	
T		B-19995 JCO 15.01.15		linear		mm		POLARIZATION & LATCHING	
U		F-23052 AMA 16.01.15		±2		scale 7:1		dwg no	
		dr J. FABRE 13.01.07						sheet 1 of 2	
N		B-15804 JCO 13.08.28		enr J. FABRE 13.01.07				size	
P		B-16822 JCO 14.01.23		chr JL CORDIER 13.01.07				95000 A3	
R		B-19187 LMU 14.10.24		appd JMC 13.01.07				type	
sheet		revision		U A				CUSTOMER Drawing	
index		sheet		1 2					

RECOMMENDATION TO PLACE THE CONNECTOR ONTO THE PCB



Copyright FCI

mat'l. code		surface		tolerance		projection		product family	
N/A		ISO 1302 ✓		ISO 406 ISO 1101				MINITEK	
ltr ecn no dr date		tolerances unless otherwise specified				title			
A	B-19986	J.FA	15.01.13	angles linear .0±.x .00±.0x .000±.00x				MINITEK SMT HDR SR	
				0°±x'		scale 1:1		POLARIZATION & LATCHING	
		dr J.FABRE 15.01.07						dwg no sheet of 2 size	
		enrg L.MULIN 15.01.07						95000 A3	
		chr J.COMPAGNON 15.01.12							
		appd JCO 15.01.13						type Product Customer Drawing	
sheet index		revision sheet							