

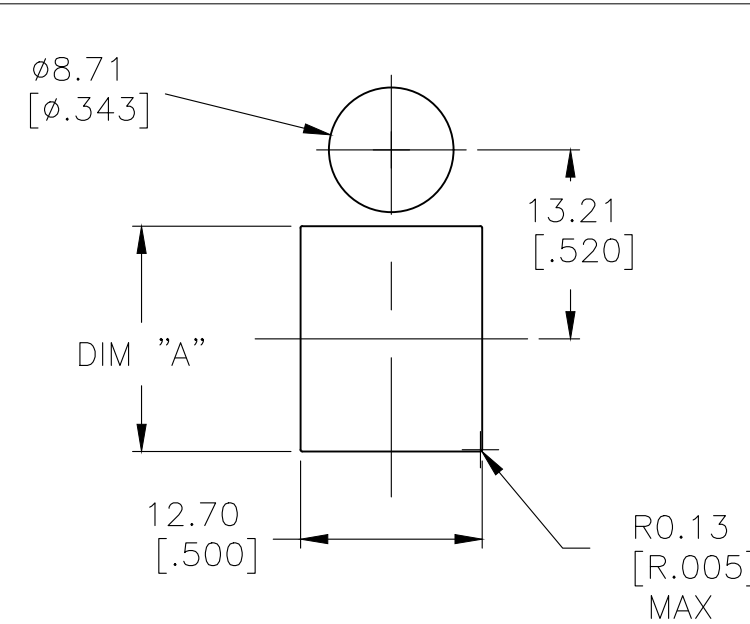
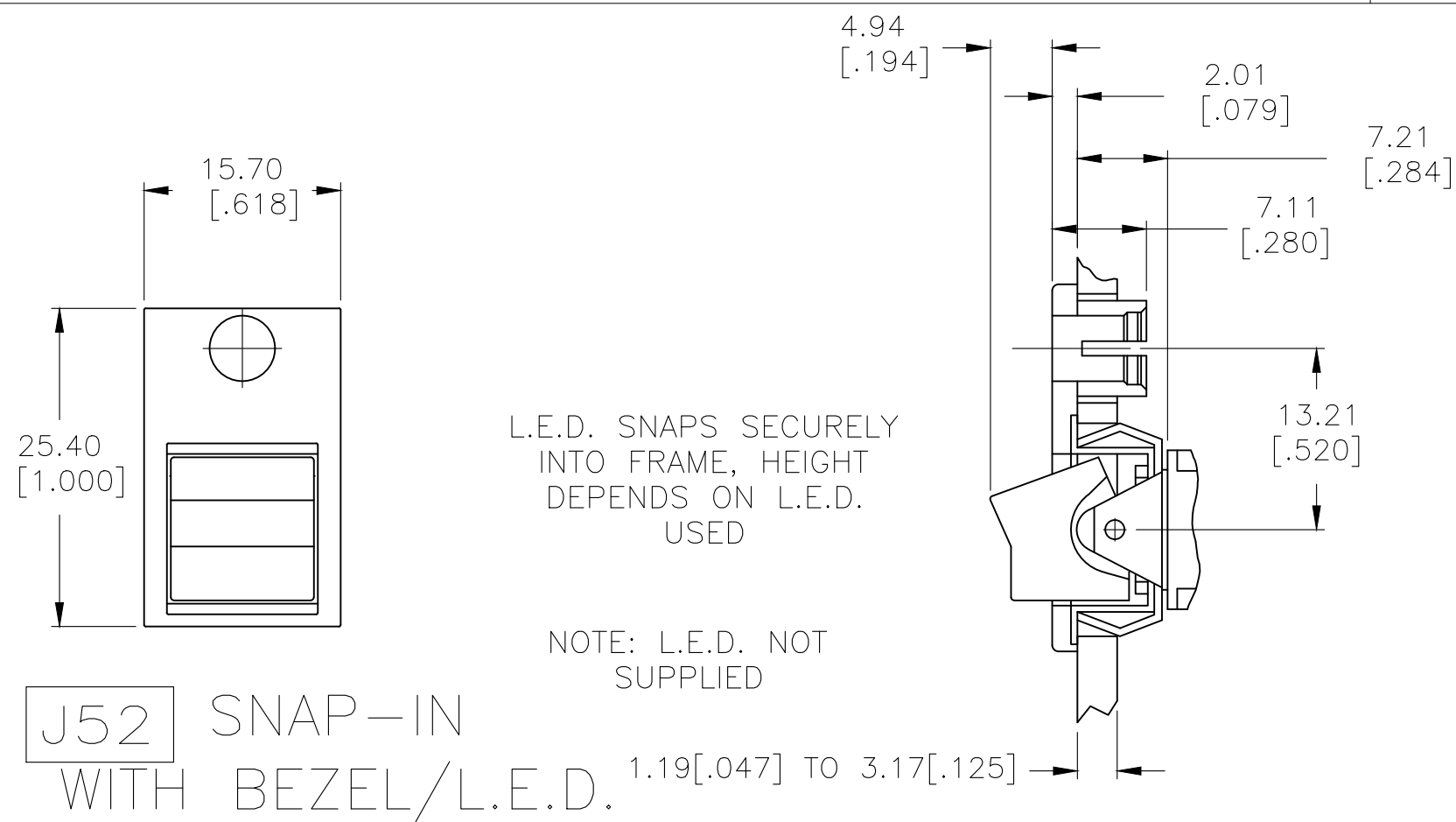
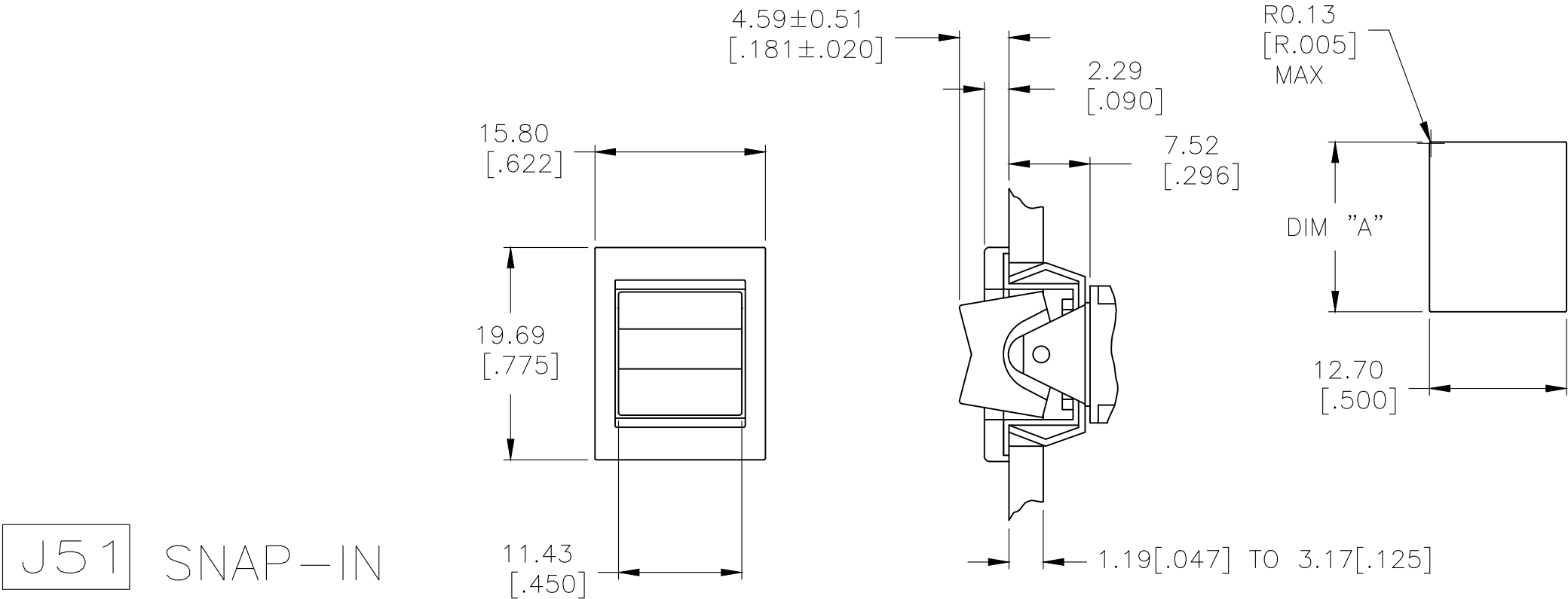
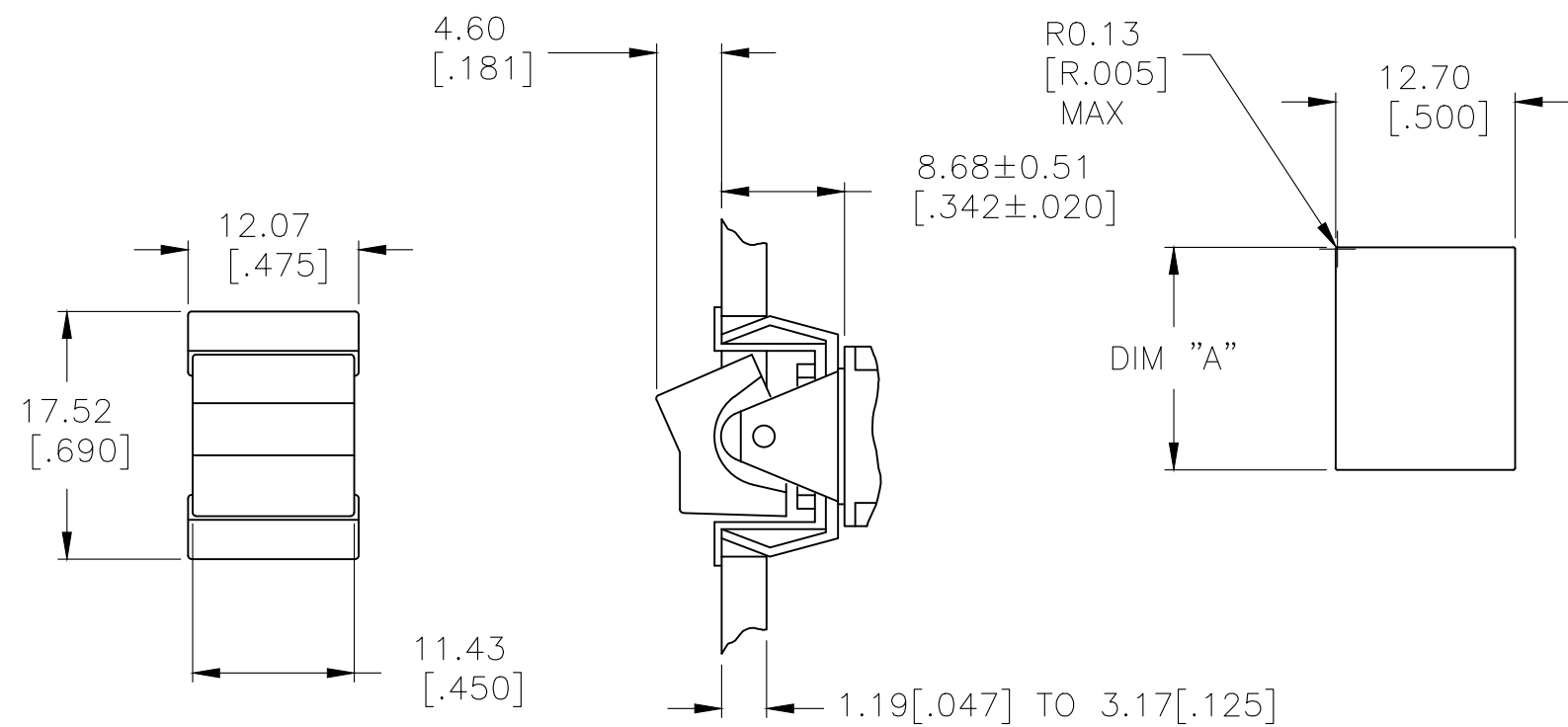
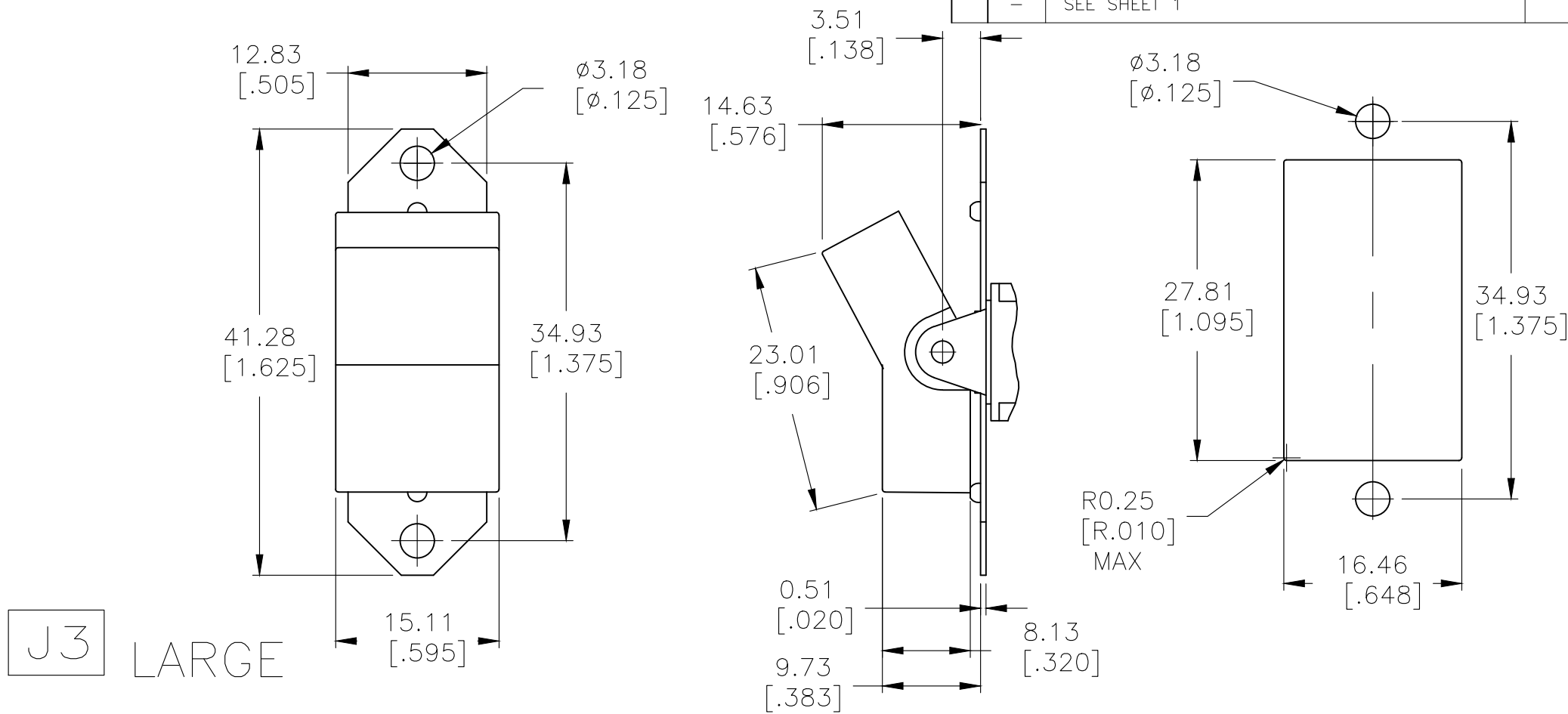
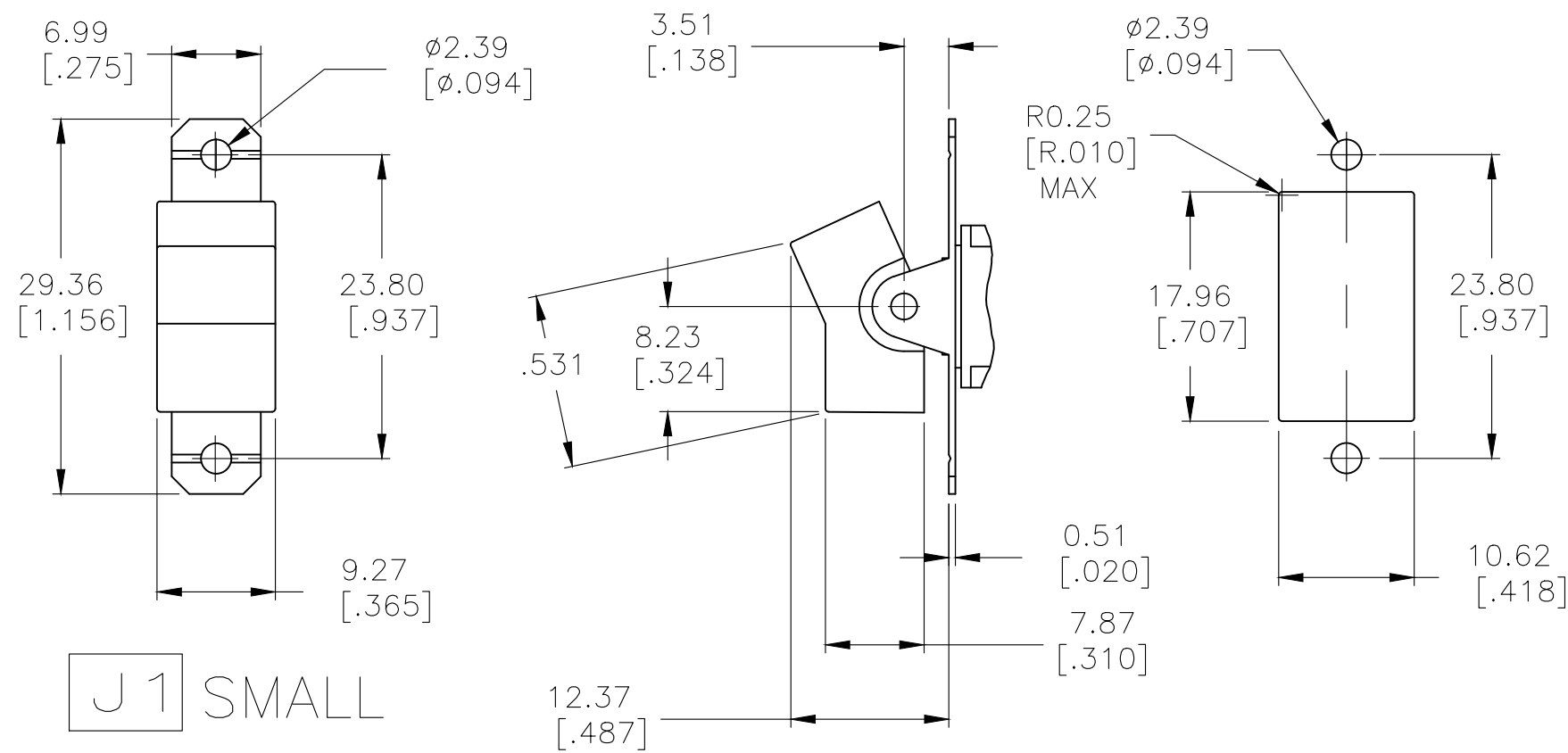

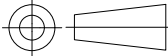


PART NUMBER SEQUENCE CHART							
MODEL	FUNCTION	ACTUATOR	TERMINAL	CONTACT	ACTUATOR COLOR	BEZEL COLOR	ROHS
A1							04
	01	J1	A	B	0 BLACK (STD)	0 BLACK (STD)	
	03	J3	AV2	G	1 BROWN	1 BROWN	
	05	J50	C	Q	2 RED	2 RED	
	07	J51	V3		3 ORANGE	3 ORANGE	
	08	J52	V4		4 YELLOW	4 YELLOW	
		J2	V6		5 GREEN	5 GREEN	
		J4	V7		6 BLUE	6 BLUE	
		J60	W		8 GRAY	8 GRAY	
		J61	W4		9 WHITE	9 WHITE	
		J62	Z				
			Z3				

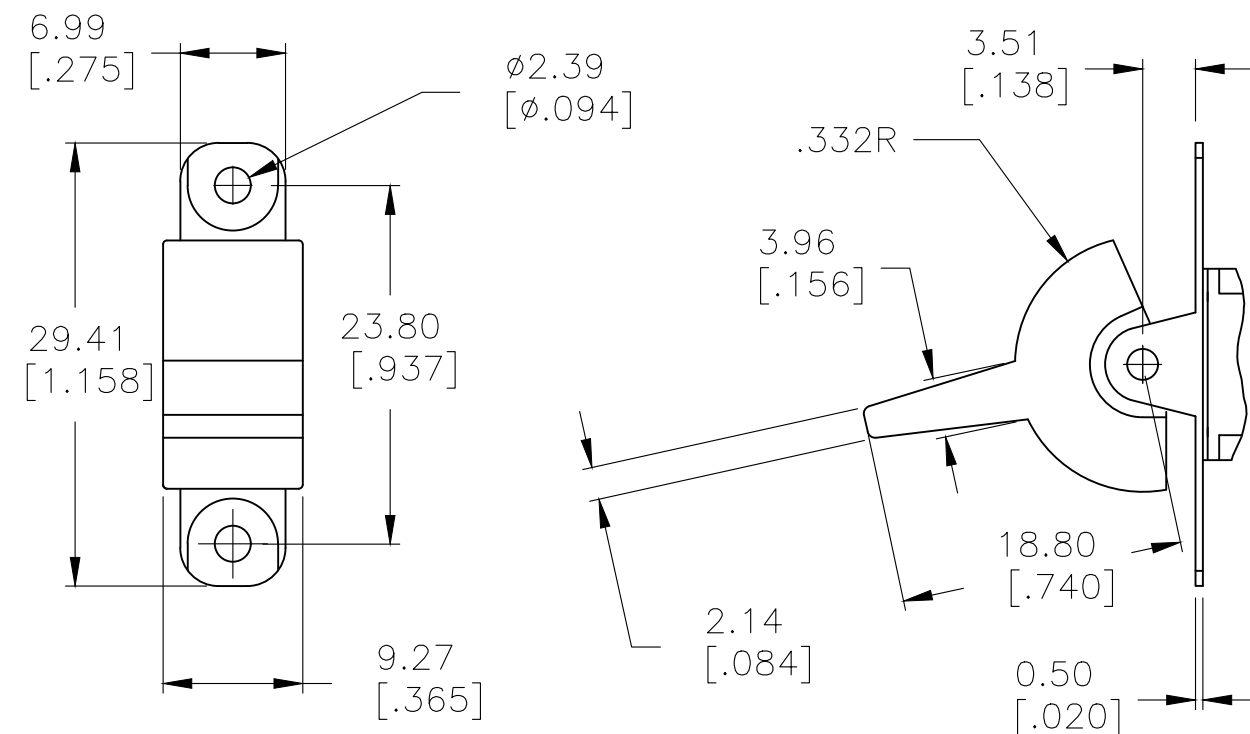
THIS DRAWING IS A CONTROLLED DOCUMENT.			DWN M.BINNER		06JAN05		<div>TE Connectivity</div>							
			CHK M.ZIITO		06JAN05									
DIMENSIONS: mm [INCHES]		TOLERANCES UNLESS OTHERWISE SPECIFIED:			APVD M.ZIITO		06JAN05		NAME					
		0 PLC ± -			PRODUCT SPEC		GEMINI A SERIES ROCKER SWITCH SINGLE POLE							
		1 PLC ± -			—									
		3 PLC ± 0.25[0.01]			APPLICATION SPEC									
		4 PLC ± -			—		SIZE		CAGE CODE		DRAWING NO		RESTRICTED TO	
MATERIAL		FINISH			WEIGHT		A2		00779		C=1571986		—	
-		-			CUSTOMER DRAWING		SCALE		2:1		SHEET		1 of 5	
											REV		A10	

REVISIONS					
P	LTR	DESCRIPTION	DATE	DWN	APVD
—	—	SEE SHEET 1	—	—	—

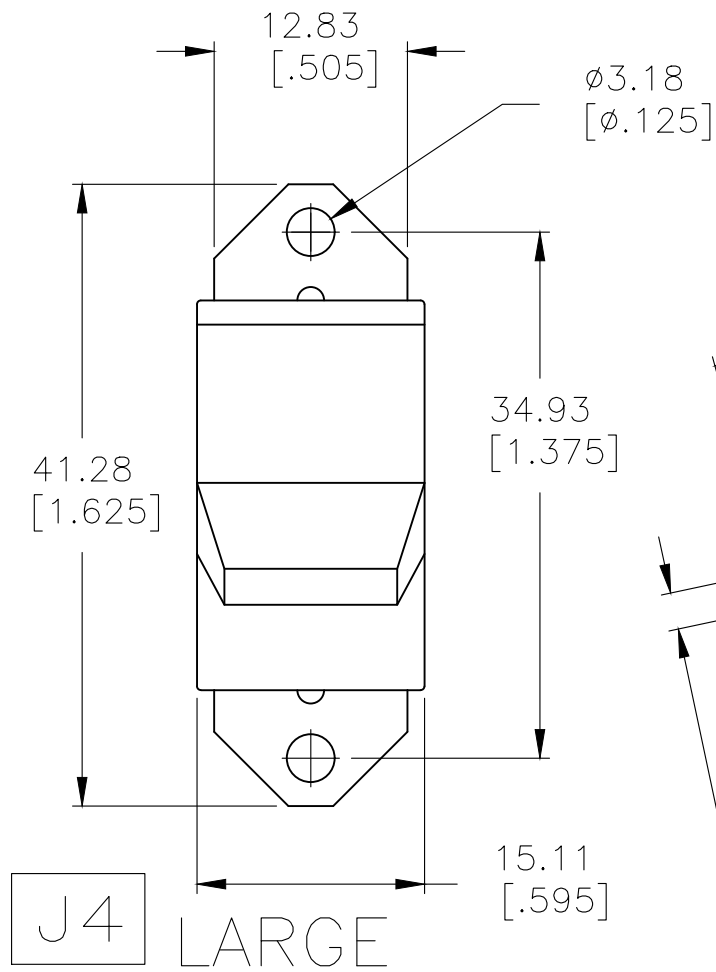
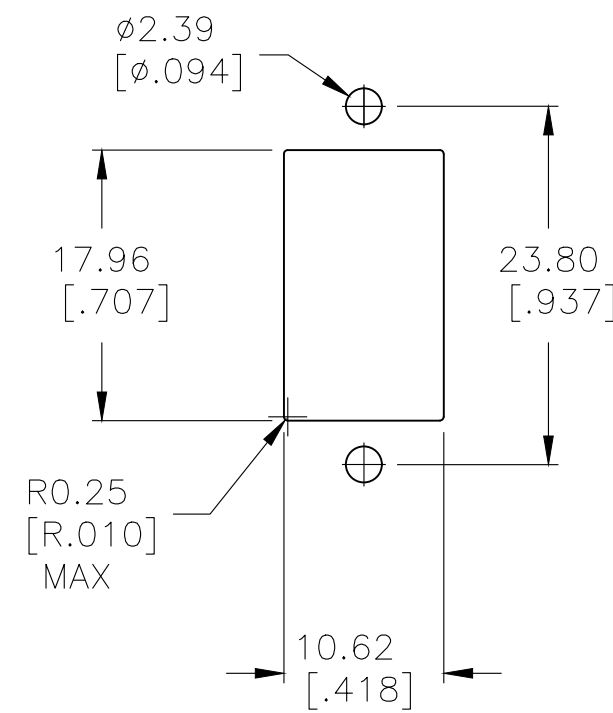


THIS DRAWING IS A CONTROLLED DOCUMENT.		DWN	M.BINNER	06JAN05	 TE Connectivity	
		CHK	M.ZITTO	06JAN05		
		APVD	M.ZITTO	06JAN05		
		PRODUCT SPEC	—	—		
DIMENSIONS: mm [INCHES]		TOLERANCES UNLESS OTHERWISE SPECIFIED:		APPLICATION SPEC		NAME
		0 PLC		±	—	SIZE
		1 PLC		±	—	CAGE CODE
		2 PLC		±	—	DRAWING NO
		3 PLC		±	0.25[0.01]	RESTRICTED TO
MATERIAL		FINISH		—	—	—
—		—		—	—	—
CUSTOMER DRAWING		SCALE		2:1	SHEET	
					2 OF 5	
					REV	
					A12	

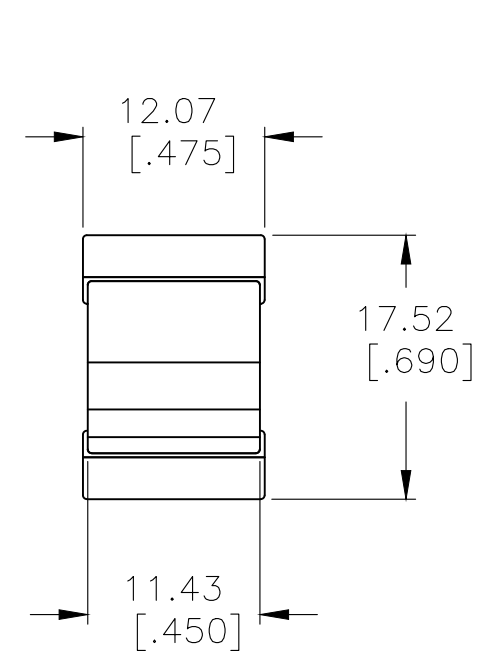
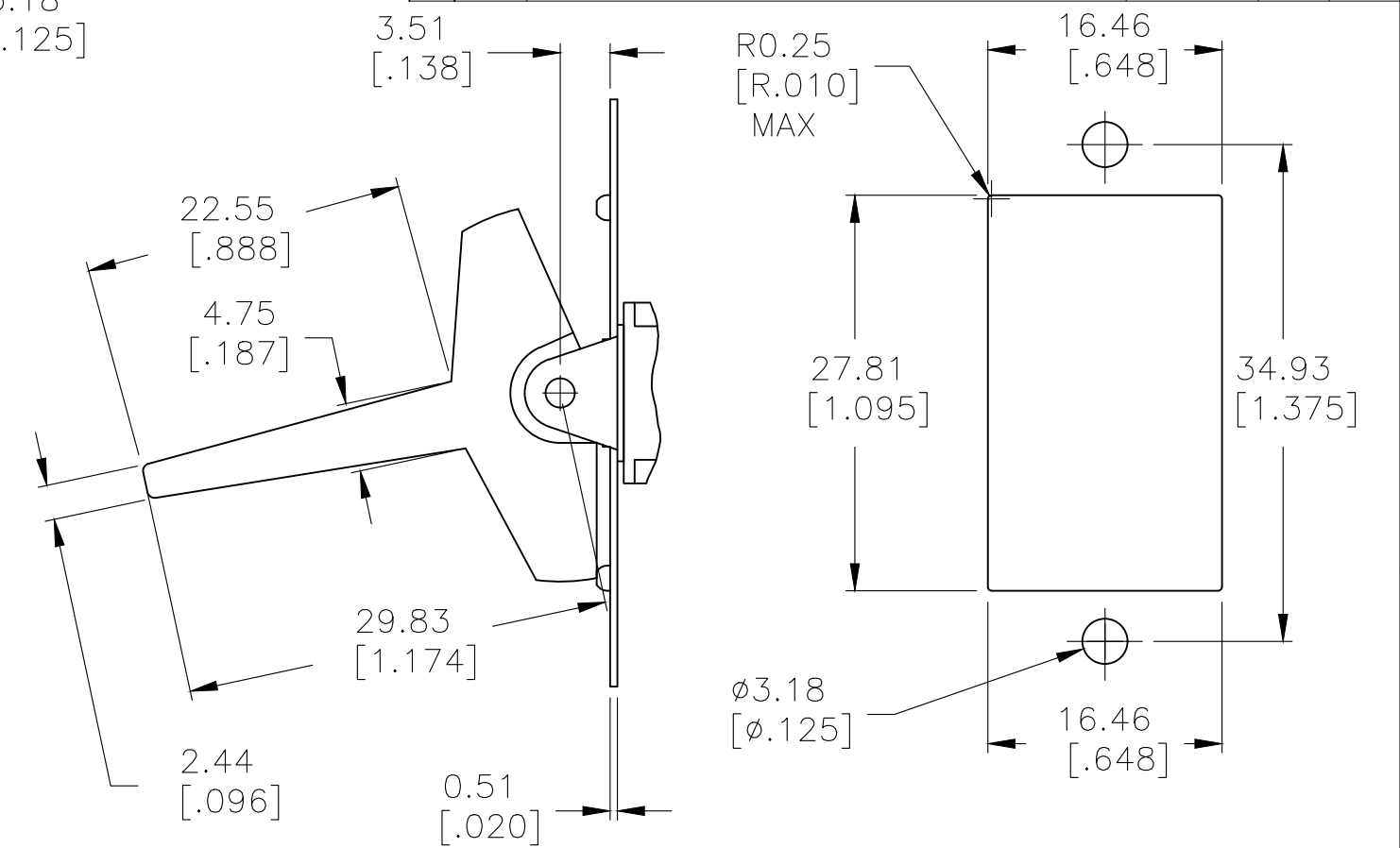
REVISIONS					
P	LTR	DESCRIPTION	DATE	DWN	APVD
	—	SEE SHEET 1	—	—	—



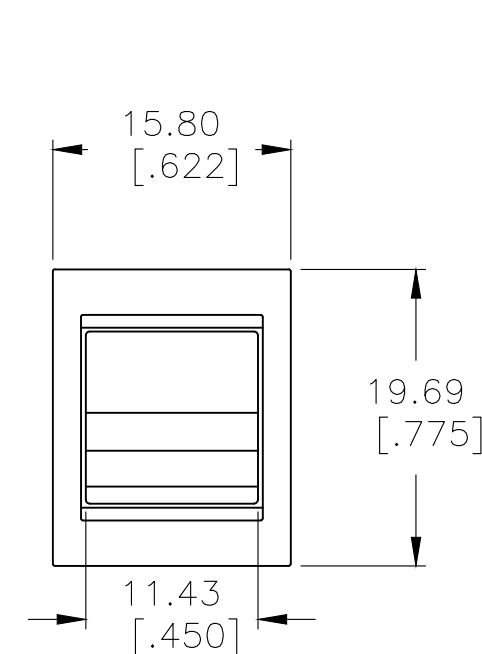
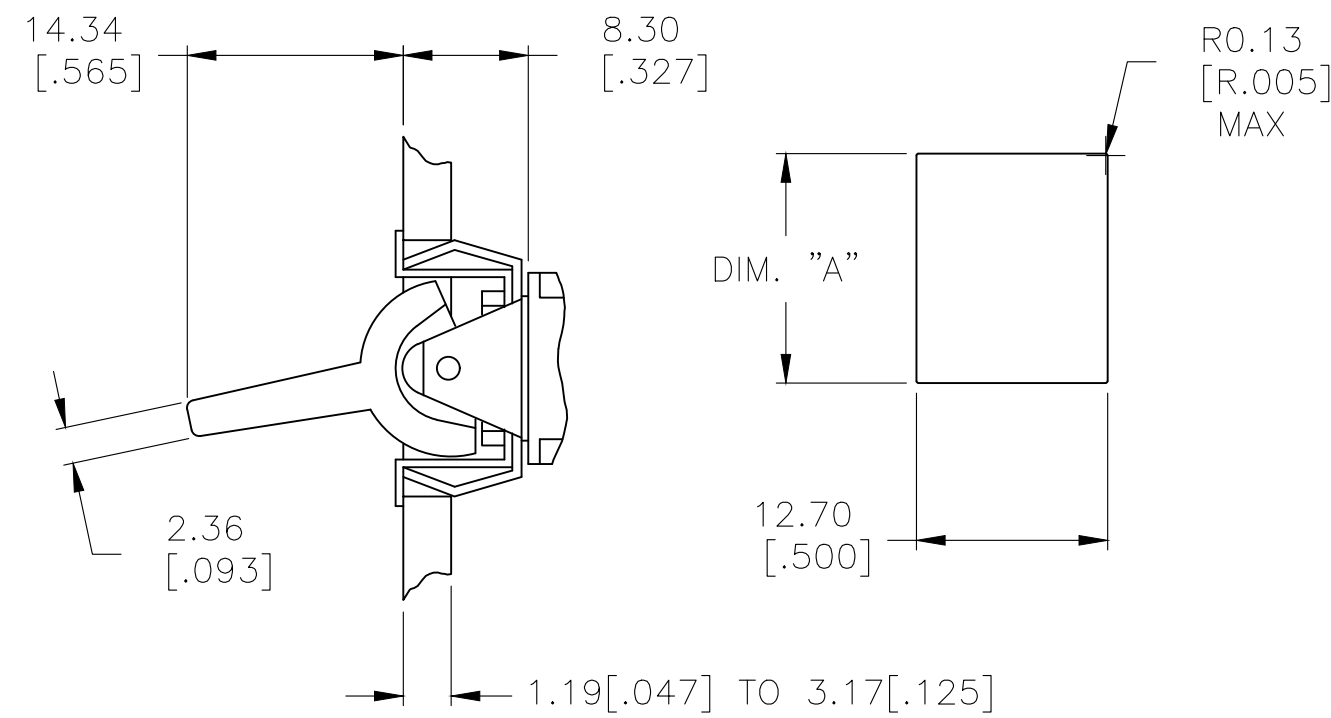
J2 SMALL



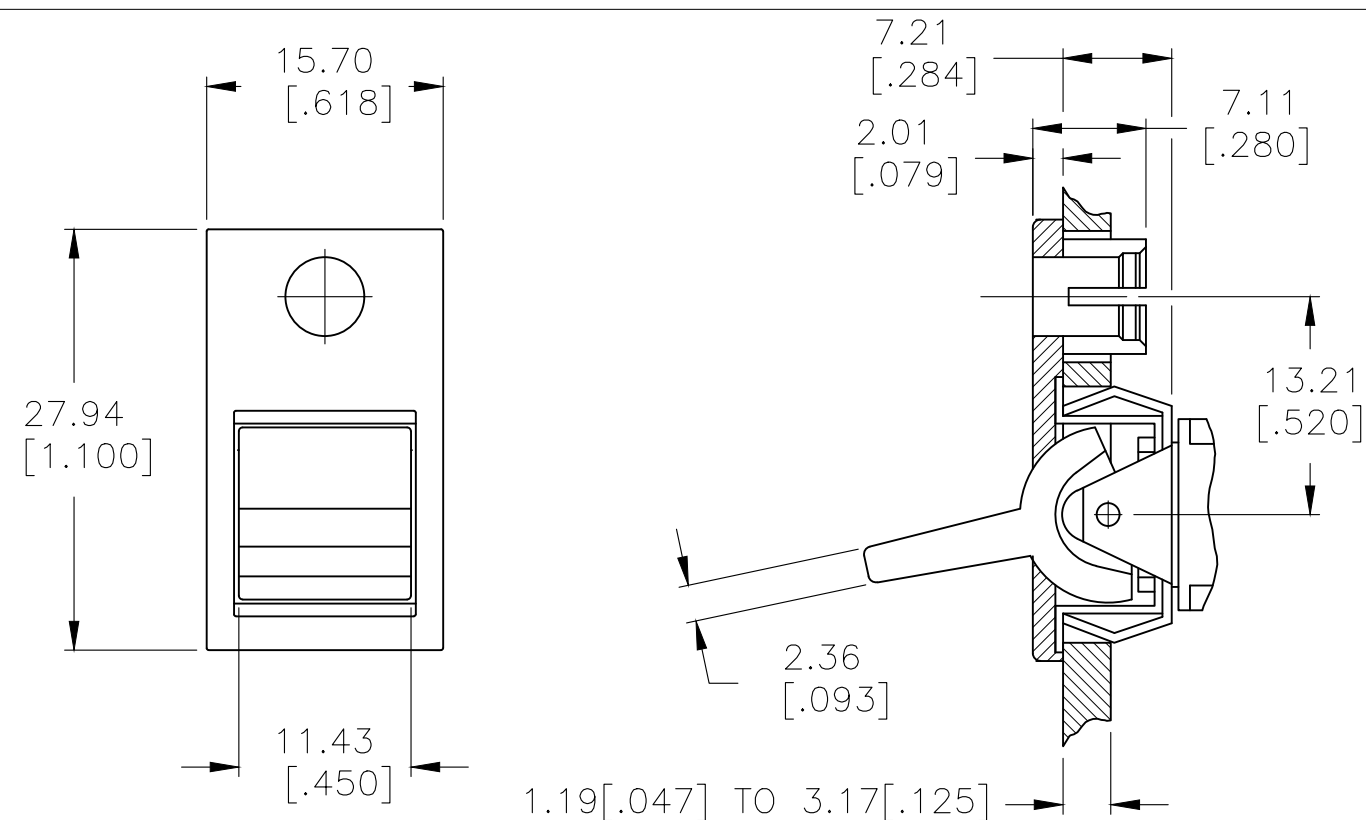
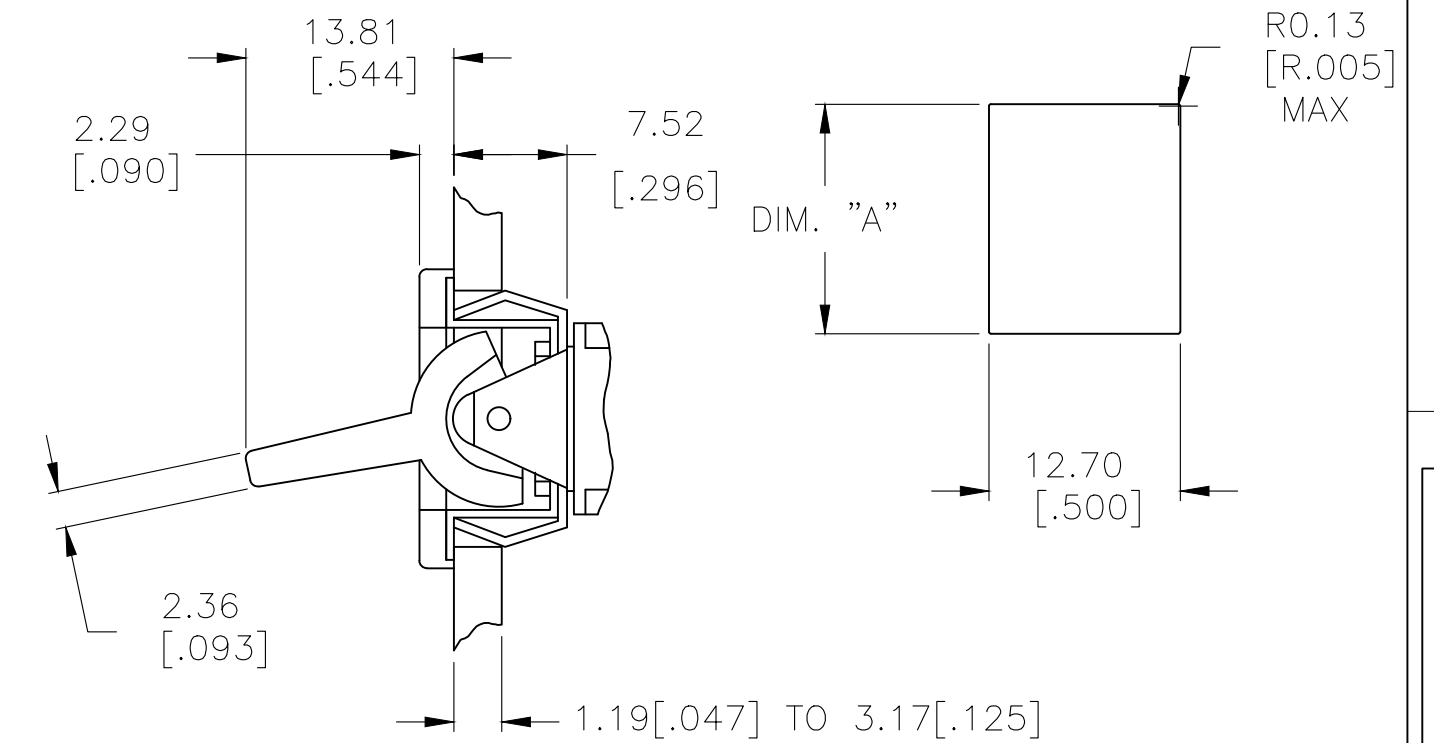
J4 LARGE



J60 SNAP-IN

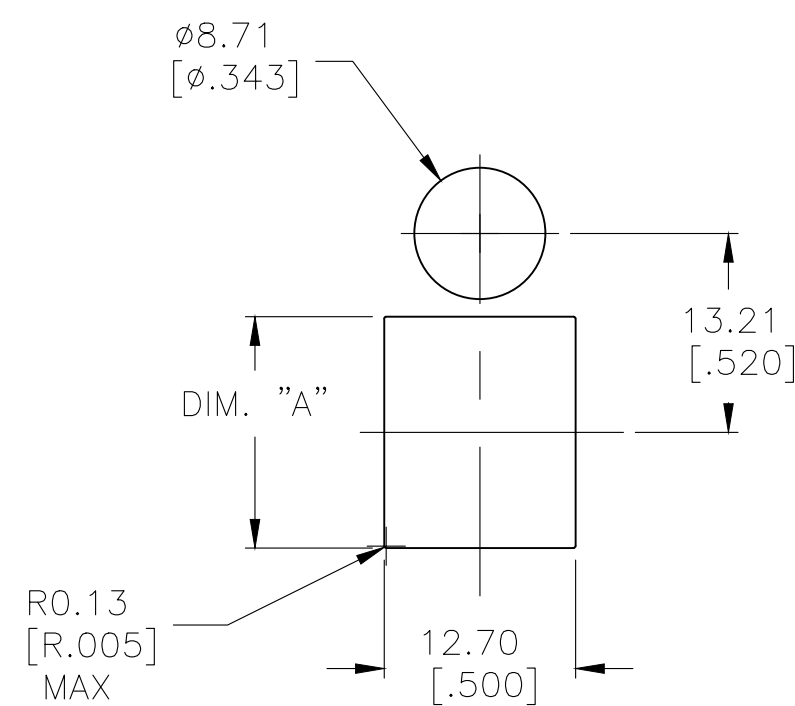


J61 SNAP-IN
WITH BEZEL





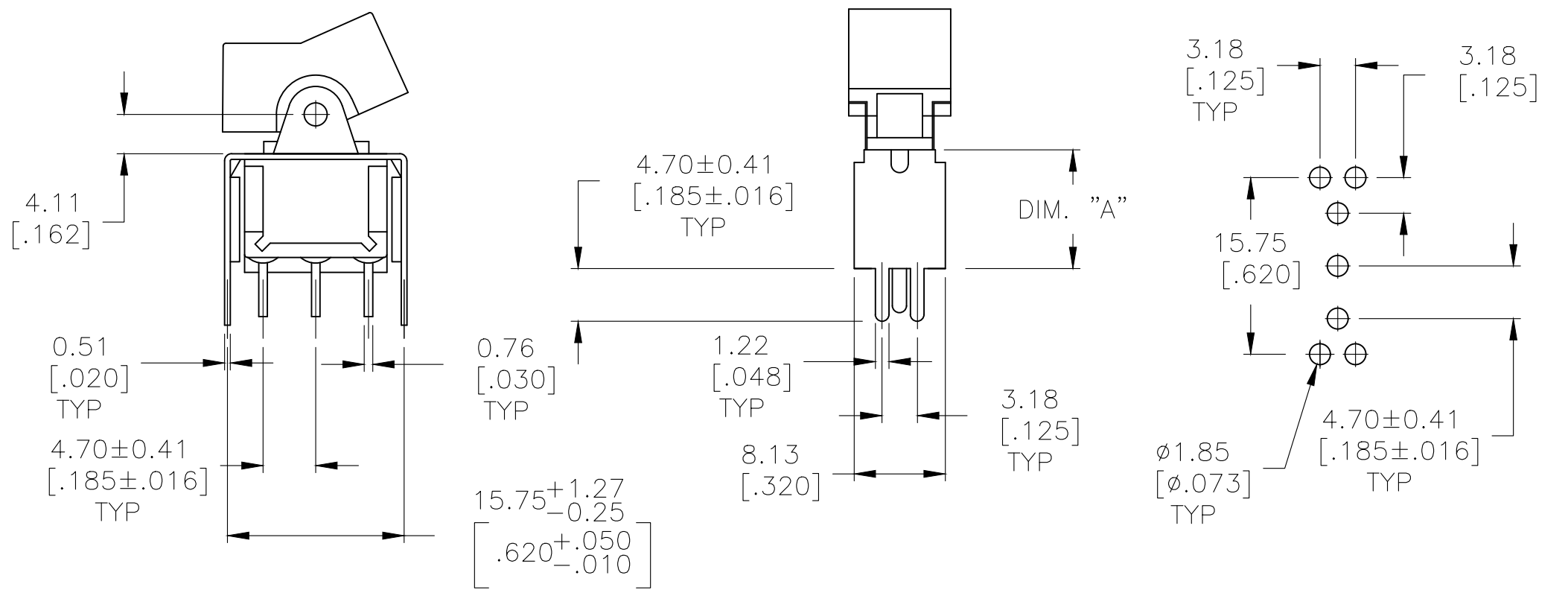
J62 SNAP-IN
WITH BEZEL/L.E.D.

NOTE: L.E.D.
NOT SUPPLIED



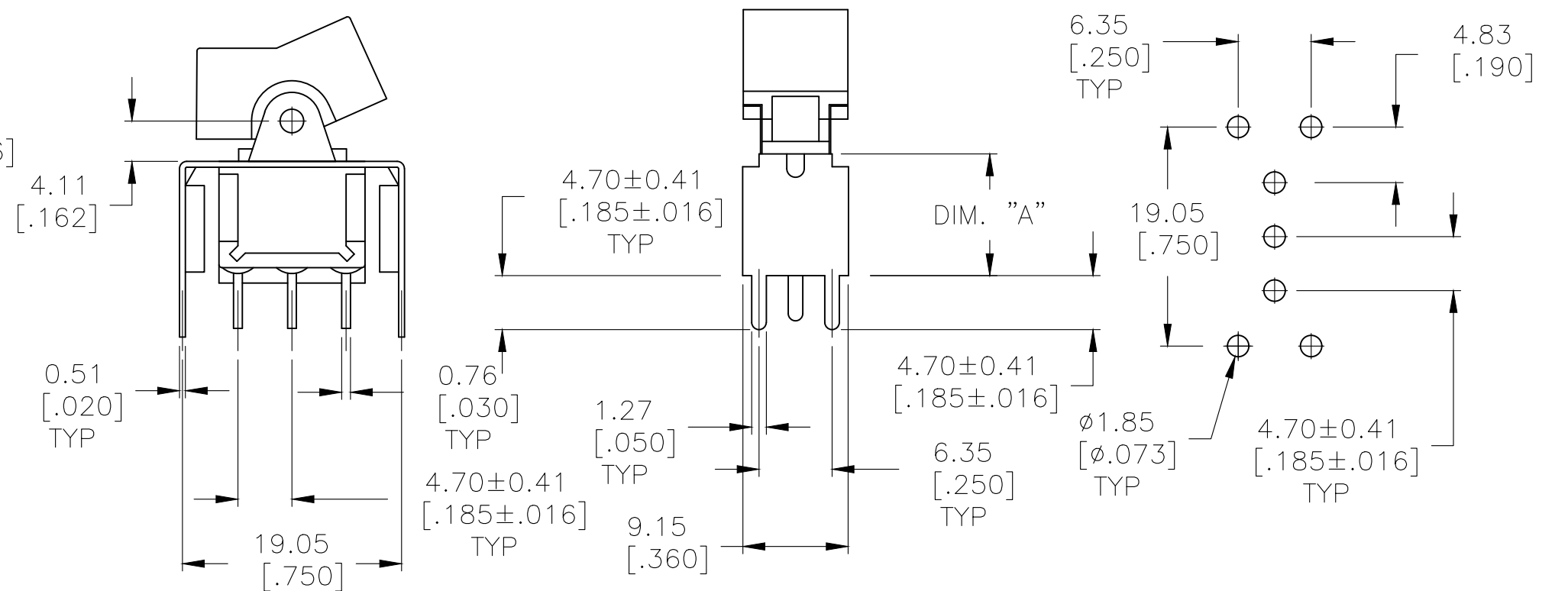
1.52[.060]–3.17[.125]	15.75[.620]–15.87[.625]
1.19[.047]–1.50[.059]	15.72[.619]
PANEL THICKNESS	DIM "A"

THIS DRAWING IS A CONTROLLED DOCUMENT.		DWN <u>M.BINNER</u> 06JAN05 CHK <u>M.ZITTO</u> 06JAN05		 TE Connectivity	
DIMENSIONS: mm [INCHES]		TOLERANCES, UNLESS OTHERWISE SPECIFIED: 0 PLC ± - 1 PLC ± - 2 PLC ± - 3 PLC ± 0.25[0.01] 4 PLC ± - ANGLES ± 4°		NAME GEMINI A SERIES ROCKER SWITCH SINGLE POLE	
		APVD <u>M.ZITTO</u> 06JAN05 PRODUCT SPEC - APPLICATION SPEC -		SIZE A2	
MATERIAL -		FINISH -		CAGE CODE 00779	
		WEIGHT -		DRAWING NO C=1571986	
CUSTOMER DRAWING				RESTRICTED TO -	
				SCALE 2:1 SHEET 3 OF 5 REV A12	



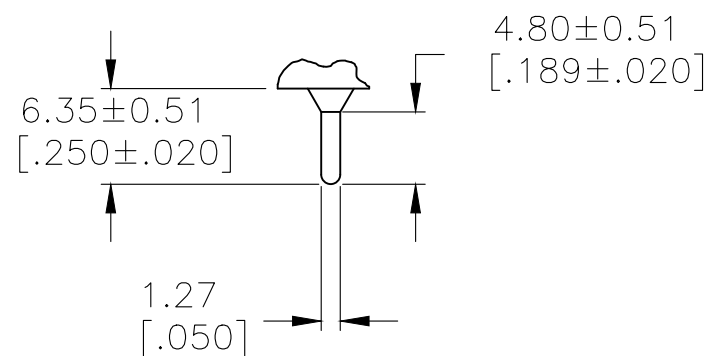
VERTICAL SUPPORT BRACKET

OPTION CODE	DIM "A"
V3	11.68[.460]
V4	16.00[.630]



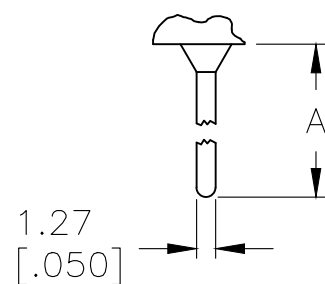
VERTICAL SUPPORT BRACKET

OPTION CODE	DIM "A"
V6	11.68[.460]
V7	16.00[.630]



.030 THK.

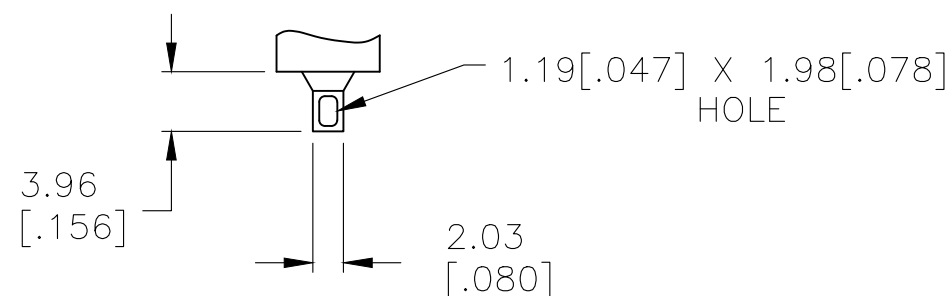
PRINTED CIRCUIT



.030 THK.

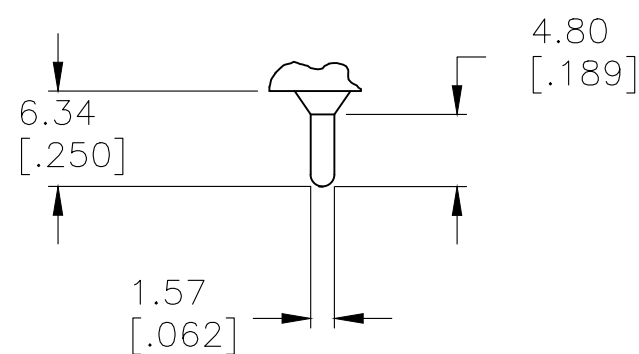
OPTION	DIM A
W	18.69[.736]
W4	26.97[1.062]

W W4 WIRE WRAP



.030 THK.

Z WIRE LUG



.030 THK.



Z3 QUICK CONNECT

MATERIALS CHART

COMPONENT NAME	BASE MATERIAL	FINISH
CASE	DAP, 30-40% GF, RED, UL94 V-0, COSMIC D72/6120F	
FRAME	304 STAINLESS STEEL	
B TERMINALS & CONTACTS	C194 COPPER	GOLD OVER NICKEL
G TERMINALS & CONTACTS	C194 COPPER	GOLD OVER SILVER
Q TERMINALS & CONTACTS	C194 COPPER	SILVER
ACTUATOR	PHENOLIC, BLACK, UL94 V-1	
ROCKER CAP	NYLON, BLACK, UL94 V-1, NYTEX MG-2012N	
BUSHING & ACTUATOR LEVER	ZINC ALLOY K2	.000100-.000150 NICKEL
SPRING	MUSIC WIRE	
SUPPORT BRACKET	C2680H BRASS	TIN
PIVOT PIN	STEEL	NICKEL
TERMINAL SEAL	EPOXY, UL94 V-1, BOOM HOUSE S-9001A	

11	A105J1AV2Q004	5-1571986-0
11	A105J1AQ004	4-1571986-9
11	NOT ASSIGNED	4-1571986-8
11 12	A103J1AV2Q004MB	4-1571986-7
	A103J61ZQ0004	4-1571986-6
	A103J51ZQ0004	4-1571986-5
11	A103J3ZQ004	4-1571986-4
11	A103J2ZQ004	4-1571986-3
11	A103J2CB004	4-1571986-2
	A103J1ZQ004	4-1571986-1
11	A103J1V3Q004	4-1571986-0
11	A103J1AV2Q004	3-1571986-9
	A103J1AV2B004	3-1571986-8
11	NOT ASSIGNED	3-1571986-7
	A101J61ZQ0004	3-1571986-6
	A101J51ZQ2004	3-1571986-5
	A101J51ZQ0004	3-1571986-4
11	A101J51ZB0004	3-1571986-3
11	NOT ASSIGNED	3-1571986-2
	A101J51Z3Q0004	3-1571986-1
	A101J51Z3G0004	3-1571986-0
	A101J51CB0004	2-1571986-9
11	A101J50ZQ004	2-1571986-8
11	A101J50V3Q204	2-1571986-7
11	A101J50V3Q004	2-1571986-6
11	A101J50AV2Q004	2-1571986-5
11	A101J4ZQ804	2-1571986-4
	A101J4ZQ004	2-1571986-3
11	A101J3ZQ004	2-1571986-2
11	A101J3V3Q204	2-1571986-1
	A101J2ZQ004	2-1571986-0
	A101J2ZB904	1-1571986-9
11	A101J2AV2Q004	1-1571986-8
	A101J1ZQ004	1-1571986-7
11	A101J1ZB004	1-1571986-6
	A101J1V3Q004	1-1571986-5
	A101J1V3B004	1-1571986-4
11	A101J1CQ004	1-1571986-3
	A101J1CG004	1-1571986-2
	A101J1AV2Q004	1-1571986-1
11	A101J1AV2B004	1-1571986-0
	A101J1AQ204	1571986-9
	A101J1AQ004	1571986-8
	A101J1AB004	1571986-7
11	NOT ASSIGNED	1571986-6
11	NOT ASSIGNED	1571986-5
11	NOT ASSIGNED	1571986-4
11	NOT ASSIGNED	1571986-3
11	NOT ASSIGNED	1571986-2
7 11	A101J1AB004	1571986-1
	ALCO P/N	P/N

11	9	A101J1AV2Q004AM9	7-1571986-4
11	8	A101J1AV2Q004AM8	7-1571986-3
	7	A101J1AV2Q004AM	7-1571986-2
11		A108J61ZQ0004	7-1571986-0
		A108J51ZQ0004	6-1571986-9
11		A108J1ZQ004	6-1571986-8
11		A108J1V3Q004	6-1571986-7
11		A107J61ZQ0004	6-1571986-6
		A107J51ZQ0004	6-1571986-5
		A105J61ZQ0004	6-1571986-4
11		A105J61ZG0004	6-1571986-3
11		A105J52ZQ2004	6-1571986-2
		A105J51ZQ0004	6-1571986-1
		A105J4ZQ004	6-1571986-0
		A105J3ZQ004	5-1571986-9
11		A105J3CQ2004	5-1571986-8
11		A105J3CQ004	5-1571986-7
		A105J2ZQ004	5-1571986-6
11		A105J2AV2Q004	5-1571986-5
11		A105J2AQ004	5-1571986-4
		A105J1ZQ004	5-1571986-3
11		A105J1V3B004	5-1571986-2
11		A105J1CQ004	5-1571986-1
		ALCO P/N	P/N

THIS DRAWING IS A CONTROLLED DOCUMENT.			DWN M.BINNER	06JAN05	 TE Connectivity							
			CHK M.ZITO	06JAN05								
DIMENSIONS: mm [INCHES]	TOLERANCES UNLESS OTHERWISE SPECIFIED:		APVD M.ZITO	06JAN05	NAME GEMINI A SERIES ROCKER SWITCH SINGLE POLE							
			PRODUCT SPEC —									
	0 PLC ± —		APPLICATION SPEC —						SIZE	CAGE CODE	DRAWING NO	RESTRICTED TO
	1 PLC ± —											
	2 PLC ± —											
	3 PLC ± 0.25[0.01]											
	4 PLC ± —											
	ANGLES ± 4°											
MATERIAL	FINISH		WEIGHT	—	A2	00779	G=1571986	—				
—	—		CUSTOMER DRAWING			SCALE	2:1	SHEET 5 of 5	REV A12			

Mouser Electronics

Authorized Distributor

Click to View Pricing, Inventory, Delivery & Lifecycle Information:

[TE Connectivity:](#)

[A101J1AV2B004](#)