

8		7		
THIS DRAWING IS UNPUBLISHED.		RELEASED FOR PUBLICATION		
20		20		
© COPYRIGHT 20 BY TYCO ELECTRONICS CORPORATION. ALL RIGHTS RESERVED.				
PART NUMBER	REV	TERMINATOR	FEED TYPE	DESCRIPTION
1339827-1	A	BENCH & LEADMAKER	MECH POST FEED	HDI APPLICATOR
7-1339827-1	A	BENCH & LEADMAKER	MECH POST FEED	-1 AND SPARE PARTS
7-1339827-7	A	-	-	SPARE PARTS KIT

CRIMP DATA ESCUBEDO TERMINAL ESCUBEDO CRIMP SPECS

TERMINAL NAME: RECEPTACLE SERIES 6.3 TP

CRIMP	SIZE	TYPE	RANGE
WIRE	2.97 [.117 IN]	F	1.00-2.50mm ²
INSUL	4.06 [.160 IN]	F	3.00-4.30 [.118-.169 IN]

WIRE STRIP LENGTH 5.00-6.00 [.197-.236 IN]

TERMINAL APPL SPEC	ESCUBEDO DATA SHT 4832.24	FEED 21.40 [.843 IN]
--------------------	---------------------------	-----------------------

TERMINALS APPLIED

TE TERM PN	MANUF TERM PN	TE TERM PN	MANUF TERM PN
1949640-1	4832.00	1949640-7	4832.32
1949640-2	4832.01	1949640-8	4832.70
1949640-3	4832.02	1949640-9	4832.50
1949640-4	4832.24	1-1949640-0	4832.51
1949640-5	4832.30	1-1949640-1	4832.52
1949640-6	4832.31		

WIRE SIZE	CRIMP HEIGHT	PIN PN & LENGTH [IN]
2.50mm ²	2.16 ±0.05 [.085 ±.002 IN]	5-354778-5 [.2770]
2.00mm ²	2.06 ±0.05 [.081 ±.002 IN]	6-354778-1 [.2800]
1.50mm ²	1.99 ±0.05 [.078 ±.002 IN]	6-354778-5 [.2820]
1.00mm ²	1.78 ±0.05 [.070 ±.002 IN]	8-354778-1 [.2900]
-	-	-
-	-	-
-	-	-
-	-	-
-	-	-
-	-	-
-	-	-

RECOMMENDED SPARE PARTS

2. GREASE RAM, CAM, CAM FOLLOWER AND FEED ROD LIGHTLY.

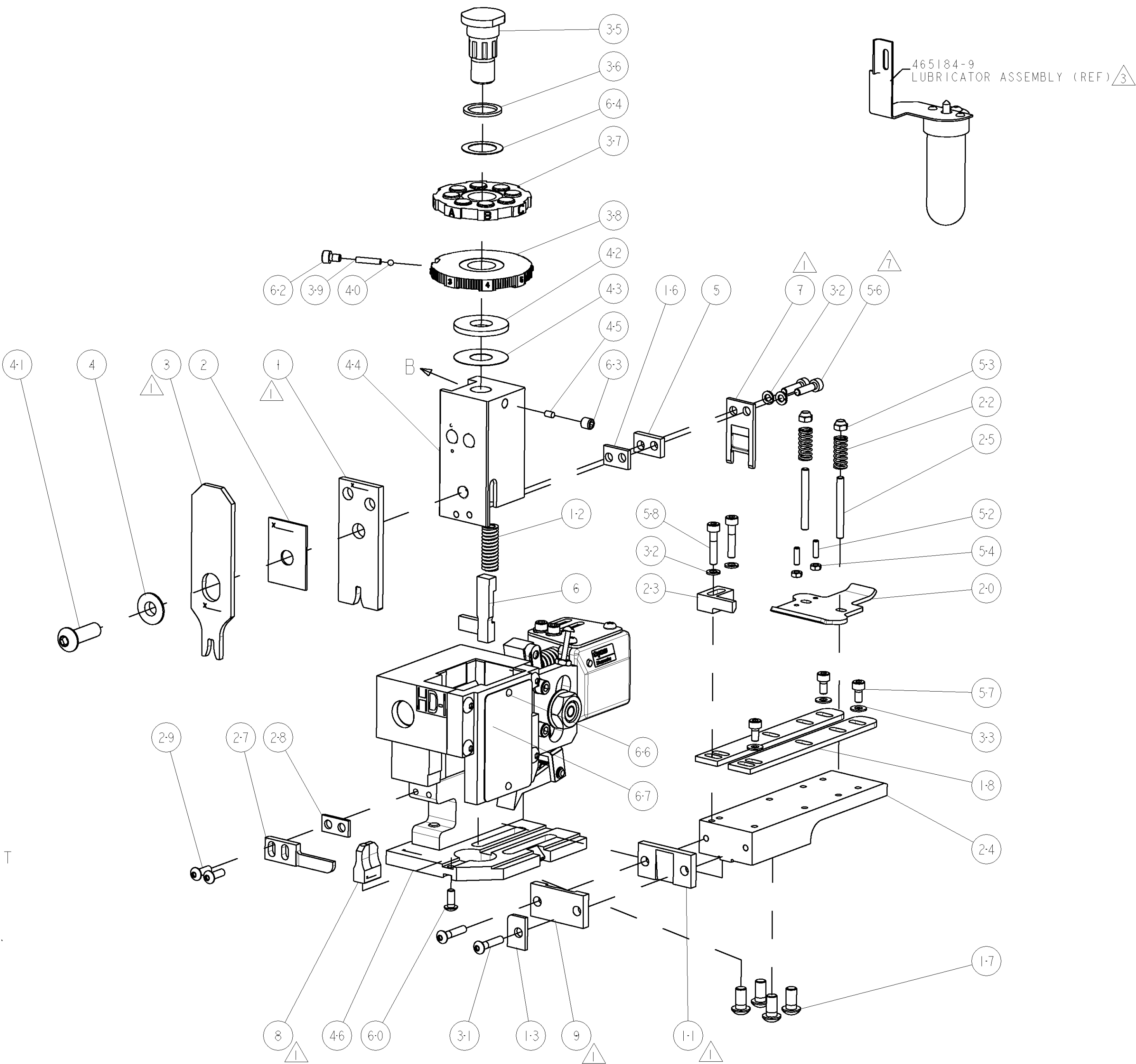
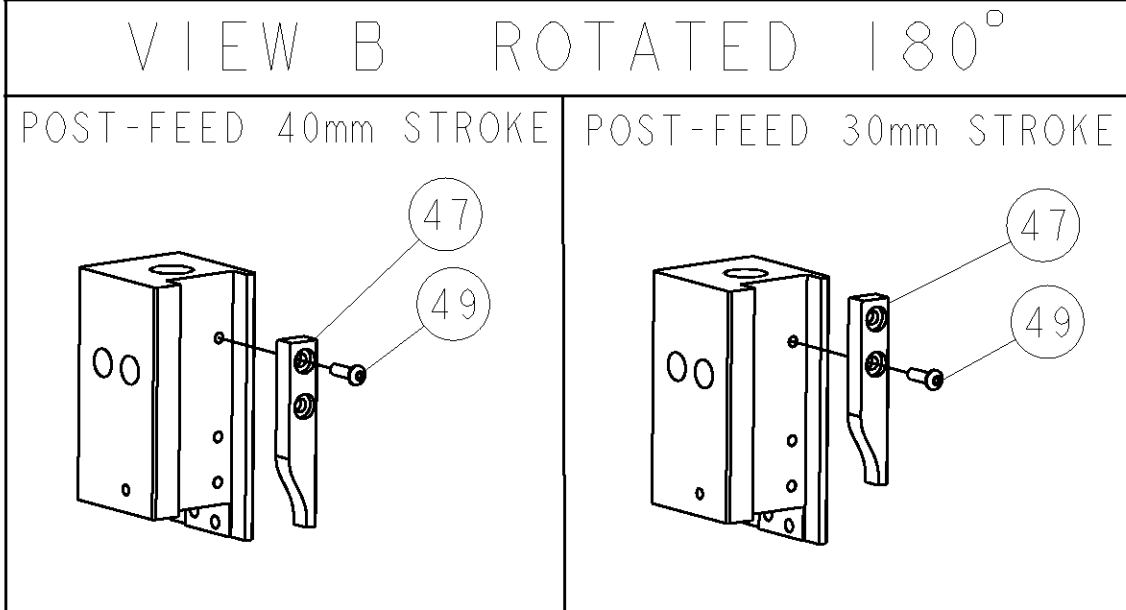
3. CERTAIN TERMINALS REQUIRE LUBRICATION. REFER TO THE APPLICATOR INSTRUCTION SHEET FOR MORE INFORMATION.

4. LUBRICATE DAILY PER THE APPLICATOR INSTRUCTION SHEET SUPPLIED WITH THE APPLICATOR.

5. CRIMP DATA SUPPLIED BY THE TERMINAL MANUFACTURE.

6. WIRE AND INSULATION RANGES ARE THAT OF THE TERMINAL.

7. CUT TO LENGTH AT ASSEMBLY.



SET UP GAGE
458638-3

LOC	DIST	REVISONS			
A	66	P	LTR	DESCRIPTION	DATE
		A		SEE ECO-08-010108	23APR2008

-	1	1	1338705-2	DOCUMENTATION PACKAGE	71
-	1	1	461264-1	PLATE, IDENTIFICATION	67
-	2	2	21017-2	SCREW, DRIVE	66
-	1	1	986950-1	WASHER, FLAT PRECISION	64
-	1	1	3-18031-0	SCR, SET, CUP POINT M6 X 6.0	63
-	1	1	18023-9	SCR, SKT HD CAP M4 X 6.0	62
-	1	1	18024-7	SCR, BTN SKT HD CAP (M4 X 10.0)	60
-	2	2	1-18023-4	SCR, SKT HD CAP M4 X 20.0	58
-	3	3	1-18023-0	SCR, SKT HD CAP M4 X 8.0	57
-	2	2	1-18023-3	SCR, SKT HD CAP M4 X 16.0	56
-	2	2	18029-1	NUT, HEX, REG M3	54
-	2	2	986965-1	NUT, LOCK, HEX, TORQUE (M4)	53
-	2	2	2-18032-2	SCR, SET, FLT POINT M3 X 10.0	52
-	1	1	18024-3	SCR, BTN SKT HD CAP (M3 X 10.0)	49
-	1	1	1338676-1	CAM, UNIVERSAL POST-FEED	47
-	1	1	1338662-1	SUB ASSY, APPLICATOR FRAME	46
-	1	1	690191-1	PLUG, NYLON	45
-	1	1	1320998-1	RAM	44
-	1	1	690125-1	SHIM SUB-ASSY	43
-	1	1	690124-1	WASHER, RAM (.115)	42
-	1	1	2-18024-6	SCR, BTN SKT HD CAP (M8 X 25.0)	41
-	1	1	23241-1	BALL, STEEL	40
-	1	1	2-22278-7	SPRING, COMPRESSION	39
-	1	1	1320922-1	DISC, ADJUST, INSULATION CRIMP	38
-	1	1	354777-1	WIRE DISC, ASSEMBLY	37
-	1	1	22480-5	SPRING, COMPRESSION	36
-	1	1	690212-1	POST, RAM	35
-	3	3	18027-2	WASHER, FLAT, REG M4	33
-	4	4	18025-2	WASHER, SPRG LOCK, REG M4	32
-	2	2	1-18024-0	SCR, BTN SKT HD CAP (M4 X 20.0)	31
-	2	2	18024-8	SCR, BTN SKT HD CAP (M4 X 12.0)	29
-	1	1	3-690451-2	SPACER, STRIPPER	28
-	1	1	240639-1	STRIPPER (MACHINING)	27
-	2	2	1320906-1	STUD, THREADED	25
-	1	1	1320995-1	PLATE, STRIP GUIDE	24
-	1	1	240825-1	PLATE, STRIP HOLD DOWN	23
-	2	2	4-22281-1	SPRING, DRAG	22
-	1	1	1338665-1	DRAG	20
-	2	2	1338663-6	GUIDE, LOWER STRIP	18
-	4	4	1-18024-8	SCR, BTN SKT HD CAP (M6 X 12.0)	17
-	1	1	1338708-1	SPACER, SLUG BLADE	16
-	1	1	690481-3	SPACER, HOLD DOWN	13
-	1	1	23846-1	SPRING, DIE	12
-	1	1	240644-9	PLATE, REAR SHEAR	11
-	-	-	-	-	10
-	1	1	5-690482-9	PLATE, FRONT SHEAR	9
-	1	2	3-1633384-9	ANVIL, COMBINATION	8
-	1	1	690474-3	BLADE, SLUG	7
-	1	1	3-455892-2	HOLD DOWN, TERMINAL	6
-	1	1	2-240641-4	SPACER	5
-	1	1	238009-1	BLOCK, FL CRIMPER SPACER	4
-	1	2	9-1213077-4	CRIMPER, INSULATION PREMIUM	3
-	1	1	1-455888-0	SPACER, CRIMPER	2
-	1	2	2-1633588-2	CRIMPER, WIRE	1

THIS DRAWING IS UNPUBLISHED. IT IS TO BE USED FOR THE PURPOSES OF THE APPLICATOR INSTRUCTION SHEET ONLY. IT IS NOT TO BE USED FOR THE PURPOSES OF THE APPLICATOR INSTRUCTION SHEET.		DWN	28FEB2008	Tyco Electronics Tyco Electronics Harrisburg, PA 17105-3608	
DIMENSIONS: INCHES		APVD	28FEB2008	NAME END FEED HDI APPLICATOR	
TOLERANCES UNLESS OTHERWISE SPECIFIED: 3 PLC ±.01 1 PLC ±.01 5 PLC ±.001 4 PLC ±.0001 ANGLES ±.0001		PRODUCT SPEC		SIZE CAGE CODE DRAWING NO	
MATERIAL		APPLICATION SPEC		RESTRICTED TO	
FINISH		WEIGHT		SCALE 3:5 SHEET 1 OF 1 REV A	
CUSTOMER DRAWING					

CUSTOMER VIEWABLE ASSEMBLY

Mouser Electronics

Authorized Distributor

Click to View Pricing, Inventory, Delivery & Lifecycle Information:

[TE Connectivity:](#)

[1339827-1](#)