

SIZE	A DIM	B DIM	C DIM $\pm$ .0050	(L DIM)
09	.050	.229	.3085	(.100)
15	.0875	.304	.3835	(.175)
25	.150	.429	.5085	(.300)
37	.225	.579	.6585	(.450)
51	.3125	.754	.8335	(.625)
65	.400	.929	1.0085	(.800)

1. SHELL OPTIONS (TO BE SPECIFIED IN NANONICS PART NUMBER):  
METAL: 6061-T6 ALUMINUM, ELECTROLESS NICKEL PLATED PER MIL-C-26074 (STANDARD) OR GOLD PLATED PER MIL-G-45204  
303 STAINLESS STEEL, PASSIVATED PER SAE-AMS-QQ-P-35  
INSULATOR MATERIAL FOR ALL METAL SHELLS IS LIQUID CRYSTAL POLYMER (LCP) PER MIL-M-24519 OR PER ASTM D5138  
PLASTIC: LIQUID CRYSTAL POLYMER (LCP) PER MIL-M-24519 OR PER ASTM D5138
2. STANDARD 1.0 X 0.25mm MOUNTING AND JACKSCREW THREADS ARE SHOWN FOR REFERENCE ONLY AND MUST BE SPECIFIED IN THE NANONICS PART NUMBER WHEN REQUIRED. 1.2 X 0.25mm THREADS ALSO AVAILABLE.
3. MOUNTING HARDWARE IS AVAILABLE WITH THIS CONFIGURATION (NOT SHOWN). HARDWARE MUST BE SPECIFIED IN THE NANONICS PART NUMBER. CONSULT TE CONNECTIVITY FOR DETAILS.
4. SMT LEADS ARE BeCu, TIN LEAD PLATED 60/40 COMPOSITION PER SAE-AMS-P-81728.
5. NANONICS TERMINATION CODE: L2
6. THIS DRAWING PREVIOUSLY IDENTIFIED AS NANONICS N10138/230

THIS DRAWING IS A CONTROLLED DOCUMENT.

DIMENSIONS:  
INCHES

MATERIAL  
SEE NOTES

TOLERANCES UNLESS OTHERWISE SPECIFIED:

0 PLC  $\pm$  -  
1 PLC  $\pm$  -  
2 PLC  $\pm$  .010  
3 PLC  $\pm$  .005  
4 PLC  $\pm$  -  
ANGLES  $\pm$  1°  
FINISH  
SEE NOTES

DWN  
M. STORRY  
15 FEB 01

CHK  
S. KAIN  
15 FEB 01

APVD  
-

PRODUCT SPEC  
-

APPLICATION SPEC  
-

WEIGHT  
-

CUSTOMER DRAWING

TE Connectivity

NAME  
RECEPTACLE ASSEMBLY, HORIZONTAL SURFACE  
MOUNT, TWO ROW DUALLOBE,  
PLASTIC OR METAL

SIZE  
A2

CAGE CODE  
00779

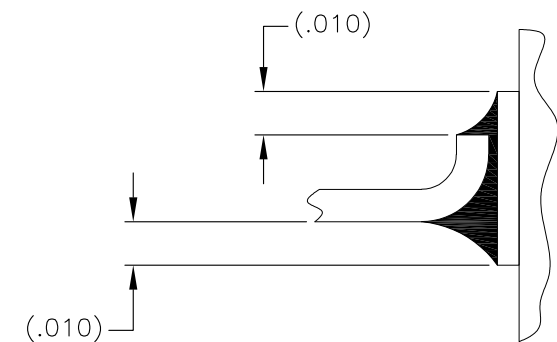
DRAWING NO  
C=1589483

RESTRICTED TO  
-

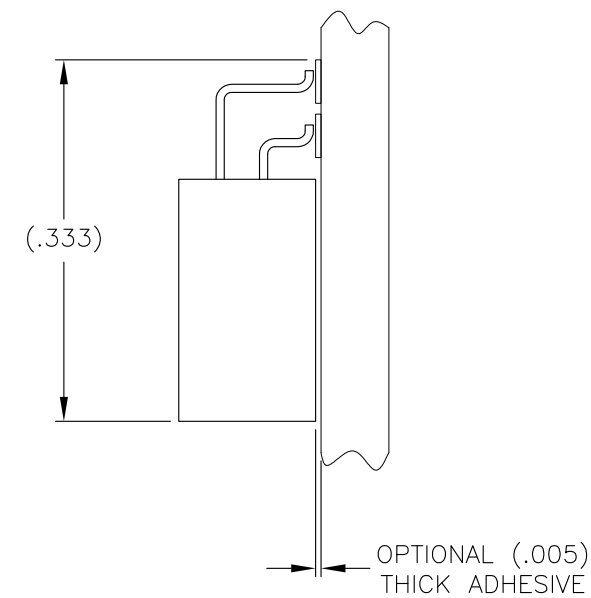
SCALE  
8:1

SHEET  
1 OF 2

REV  
U2





TYPICAL FOOT PLACEMENT  
ON SOLDER PAD



## TYPICAL PCB LAYOUT

7. POSITIONAL TOLERANCES FOR BASIC DIMENSIONED FEATURES ARE RELATIVE TO FIDUCIALS OR SOME SIMILAR DATUM REFERENCE DEFINED BY THE PCB DESIGNER.

THIS DRAWING IS A CONTROLLED DOCUMENT.		DWN M. STORRY 15 FEB 01 CHK S. KAIN 15 FEB 01		 TE Connectivity	
DIMENSIONS: INCHES  		TOLERANCES UNLESS OTHERWISE SPECIFIED:  0 PLC ± - 1 PLC ± - 2 PLC ± - 3 PLC ± - 4 PLC ± - ANGLES ± ± - FINISH		NAME RECEPTACLE ASSEMBLY, HORIZONTAL SURFACE MOUNT, TWO ROW DUALLOBE, PLASTIC OR METAL	
MATERIAL -		PRODUCT SPEC - APPLICATION SPEC - WEIGHT -		SIZE A2	CAGE CODE 00779
		CUSTOMER DRAWING		DRAWING NO C-1589483	RESTRICTED TO -
				SCALE 8:1	SHEET 2 of 2
				REV U2	

# Mouser Electronics

Authorized Distributor

Click to View Pricing, Inventory, Delivery & Lifecycle Information:

[TE Connectivity:](#)

[STL009L2HN](#)