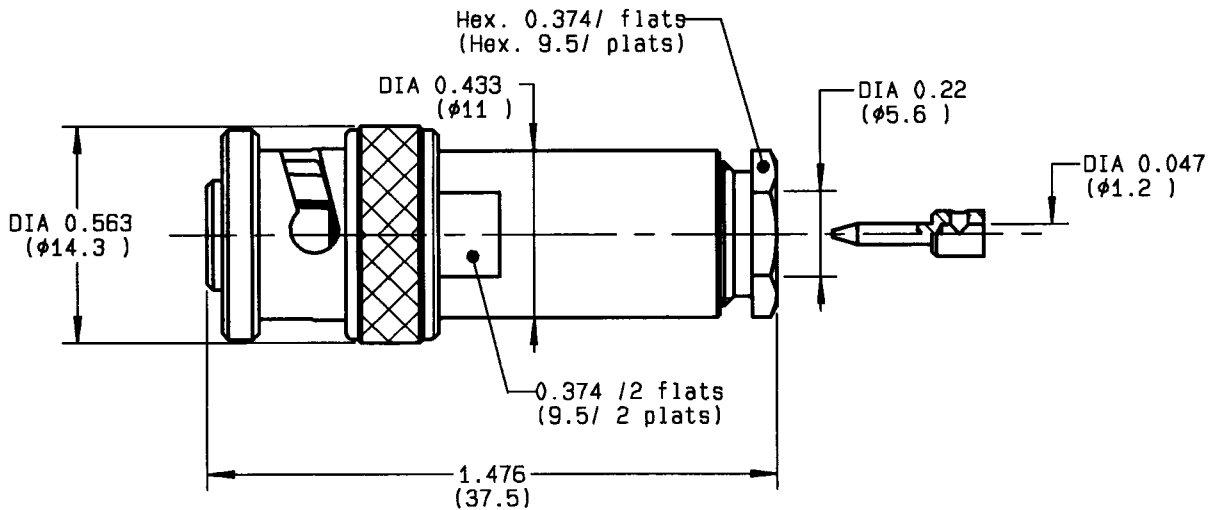


R RADIAL [®] COAXIAL CONNECTORS	- TECHNICAL DATA	R316.007.000	
		Issue : 9405	Page 1 / 2
STRAIGHT PLUG CABLE CLAMP CABLE 5/50		Series : BNC HT	



CABLES : RG58 RG141 RG142 RG223 KX15 KX23

CHARACTERISTICS

NOMINAL IMPEDANCE	50 Ω
FREQUENCY RANGE	0-2 GHz
TEMPERATURE RATING	-55/+155 °C
VSWR	1.2 + .2 x F(GHz)Maxi
RF INSERTION LOSS	- √F(GHz) dB Maxi
VOLTAGE RATING	- Vrms Max
DIELECTRIC WITHSTANDING VOLTAGE	6000 Vrms min
INSULATION RESISTANCE	- MΩ min
HERMETIC SEAL	- cc/s - Atm.cm3/s
LEAKAGE (pressurized only)	- psi - MPa
WEIGHT	0.7143 Oz 20 g

STANDARDISATION

CABLE RETENTION	20.21 lb min 90 N
CENTER CONTACT RETENTION	
Axial force - mating end	0 lb min NA N
Axial force - opposite end	0 lb min NA N
Torque (Min)	0 inch.oz cm.N
RECOMMENDED TORQUES	
Mating	0 inch.lb cm.N
Panel nut	0 inch.lb cm.N
Clamp nut	13.27 inch.lb 150 cm.N

CONSTRUCTION

CONNECTOR PARTS	MATERIALS	FINISH
BODY	BRASS	NICKEL
OUTER CONTACT	BRASS	NICKEL
CENTER CONTACT	BRASS	SILVER
INSULATOR	PTFE	-
-	-	-
-	-	-
-	-	-
-	-	-
-	-	-
-	-	-

ISSUE	REVISION No	DESCRIPTION	BY	DATE
.
.
.
.

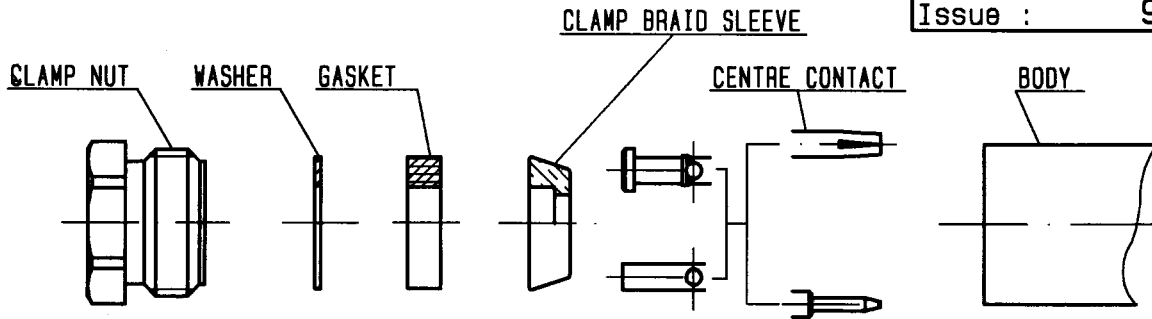
Initiated on 02/02/94

Approval by - Trigue P

The information given here is subject to change without notice. Design changes may be in order to improve the product.

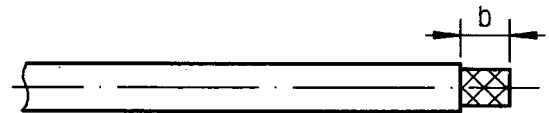


GAUTIER



①

Strip the cable .



Stripping	a	b	c	d	e
inch	0.098	0.591	0	0	0.453
mm	2.5	15	-	-	11.5

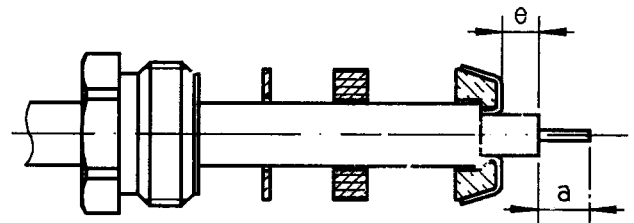
②

Slide the clamp nut , the washer and the gasket onto the cable .

Slide clamp braid sleeve over braid .

Fold back braid and trim off surplus braid .

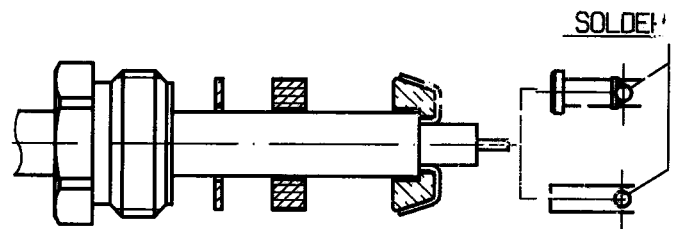
Trim back dielectric as shown .



③

Solder the cable inner conductor into centre contact .

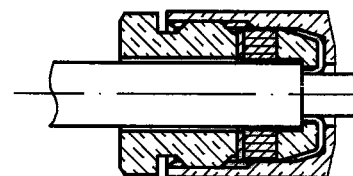
Smear the dielectric with insulating silicone grease .



④

Screw sub-assembly into the connector body .

(recommended coupling torque 13.27 in.lb)



Hex. : 0.374/flats

Mouser Electronics

Authorized Distributor

Click to View Pricing, Inventory, Delivery & Lifecycle Information:

Radial:

[R316007000](#)