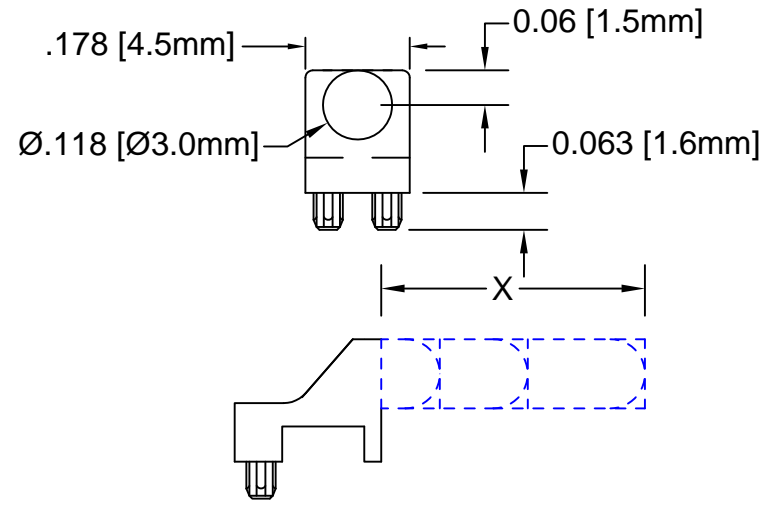
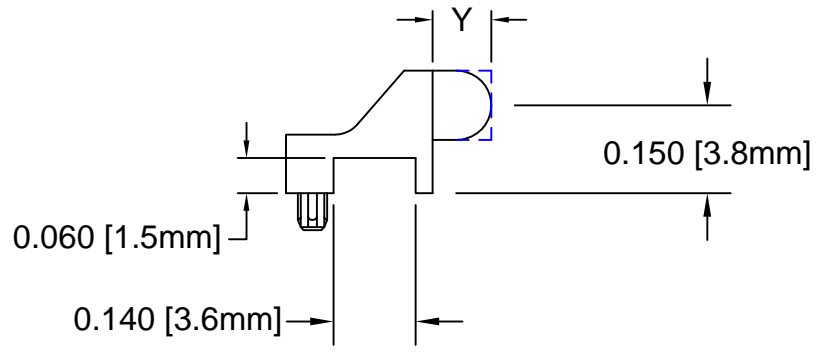
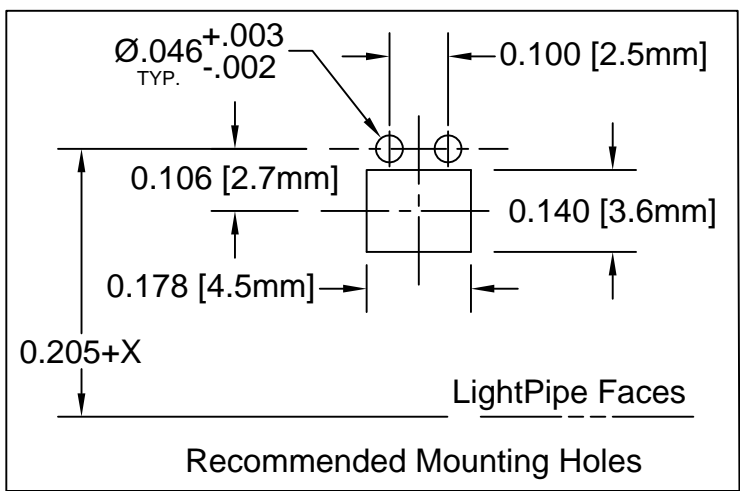
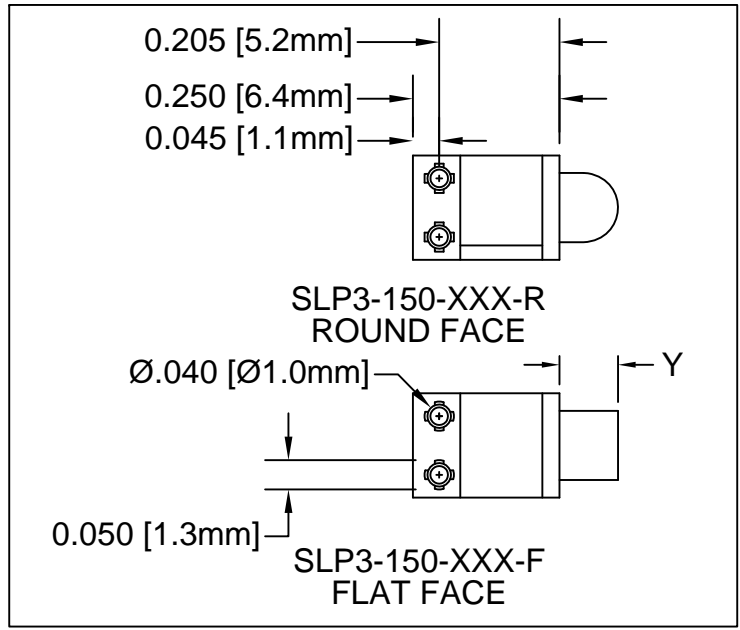


| REV. | DESCRIPTION                             | DATE     | APPROVED |
|------|---|----------|----------|
| J    | Added SLP3-150-200-R and SLP3-150-300-F | 10/11/13 | G. W.    |
| K    | Added Color Options, Sheet #2           | 02/02/16 | J. C.    |



| PART NUMBER    | Y DIMENSION                |
|----------------|----------------------------|
| SLP3-150-100-F | 0.100 [2.54mm] Flat Face   |
| SLP3-150-100-R | 0.100 [2.54mm] Round Face  |
| SLP3-150-150-F | 0.150 [3.81mm] Flat Face   |
| SLP3-150-150-R | 0.150 [3.81mm] Round Face  |
| SLP3-150-200-R | 0.200 [5.08mm] Round Face  |
| SLP3-150-250-F | 0.250 [6.35mm] Flat Face   |
| SLP3-150-250-R | 0.250 [6.35mm] Round Face  |
| SLP3-150-300-F | 0.300 [7.62mm] Flat Face   |
| SLP3-150-300-R | 0.300 [7.62mm] Round Face  |
| SLP3-150-450-R | 0.450 [11.43mm] Round Face |



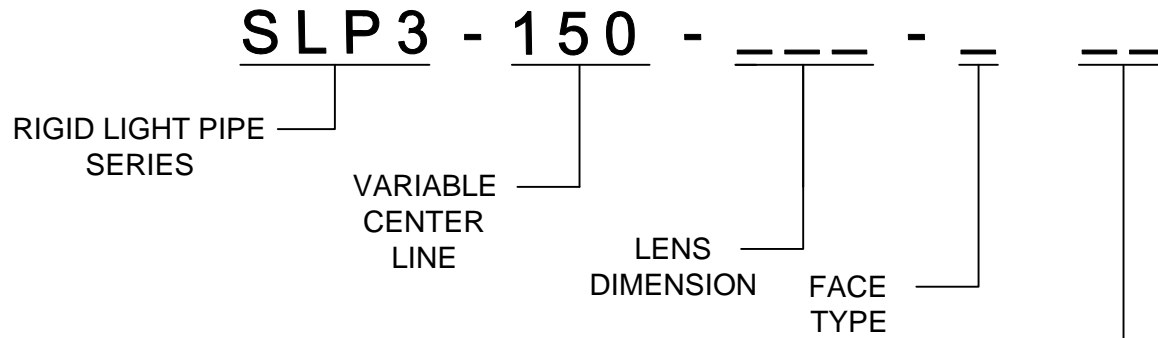
| STANDARD TOLERANCE (UNLESS OTHERWISE SPECIFIED) |                | BIVAR®                                  |                |
|---|----------------|---|----------------|
| DECIMALS  | ANGULAR        | 4 THOMAS, IRVINE, CA. 92618             |                |
| .X ± .1   | X° ± 1°        | TEL: (949) 951-8808 FAX: (949) 951-3974 |                |
| .XX ± .01                                       |                | TITLE: LIGHT PIPE                       |                |
| .XXX ± .005                                     |                | 90° VARIABLE CENTERLINE                 |                |
| DESIGNED: Ty Yin                                | DATE: 10/17/07 | PART NO: SLP3-150-XXX-X                 | REVISION: K    |
| CHECKED: M. Chen                                | DATE: 10/17/07 | CAGE CODE: 32559                        | SHEET # 1 OF 2 |
| CAD GENERATED DOCUMENT. DO NOT MEASURE DRAWING. |                |   |                |

3. ALL DIMENSIONS ARE IN INCHES UNLESS OTHERWISE SPECIFIED
2. MATERIAL: POLYCARBONATE, 94V-0, CLEAR.
1. GENERAL SPECIFICATIONS: BIVAR MOLDED COMPONENT SPECIFICATION BV00-E101.

**OTHER AVAILABLE COLORS**

\* SEE TABLE FOR ORDERING INFORMATION


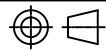
| REV. | DESCRIPTION  | DATE | APPROVED |
|------|--------------|------|----------|
|      | SEE SHEET #1 |      |          |
|      |              |      |          |
|      |              |      |          |
|      |              |      |          |



| COLOR  | Order Code |
|--------|------------|
| BLUE   | BE         |
| BLACK  | BK         |
| GREEN  | GN         |
| GRAY   | GY         |
| RED    | RD         |
| YELLOW | YW         |

NOTE: LEAVE ORDER CODE BLANK IF NO COLOR IS DESIRED.

4. PARTS ARE DYED TO COLOR UPON REQUEST.

|   |                          |  |                              |
|---|--------------------------|--|------------------------------|
| STANDARD TOLERANCE<br>( UNLESS OTHERWISE SPECIFIED )<br>DECIMALS      ANGULAR         |                          | <br>4 THOMAS, IRVINE, CA. 92618<br>TEL: (949) 951-8808    FAX: (949) 951-3974 |                              |
|  |                          |  |                              |
| DESIGNED:<br><b>K. Aukshunas</b>  | DATE:<br><b>01/25/16</b> | TITLE: LIGHT PIPE<br>90° VARIABLE CENTERLINE   |                              |
| CHECKED:<br><b>J. Chiang</b>  | DATE:<br><b>01/25/16</b> | PART NO:<br><b>SLP3-150-XXX-X</b>  | REVISION:<br><b>K</b>        |
|   |                          | CAGE CODE : <b>32559</b>   | SHEET # <b>2</b> OF <b>2</b> |
| CAD GENERATED DOCUMENT. DO NOT MEASURE DRAWING.                                       |                          |  |                              |

# Mouser Electronics

Authorized Distributor

Click to View Pricing, Inventory, Delivery & Lifecycle Information:

## BIVAR:

[SLP3-150-100-F](#) [SLP3-150-100-R](#) [SLP3-150-250-R](#) [SLP3-150-250-F](#) [SLP3-150-450-R](#) [SLP3-150-300-F](#) [SLP3-150-300-R](#) [SLP3-150-150-R](#) [SLP3-150-150-F](#) [SLP3-150-200-R](#) [SLP3-150-150-F-GY](#)