
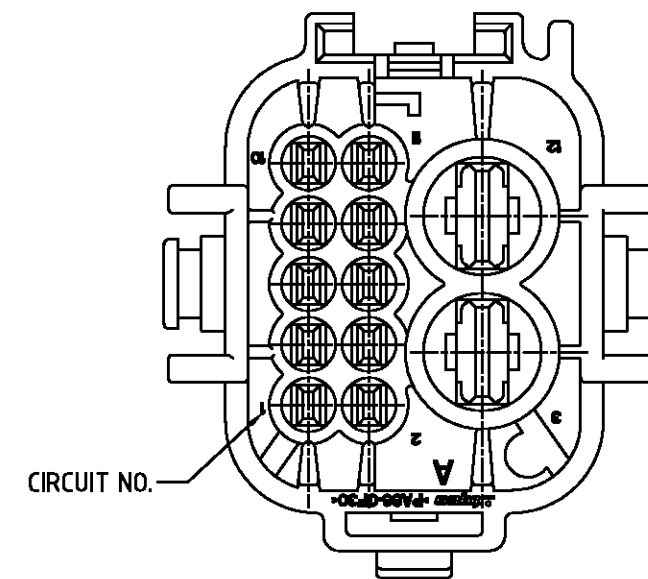
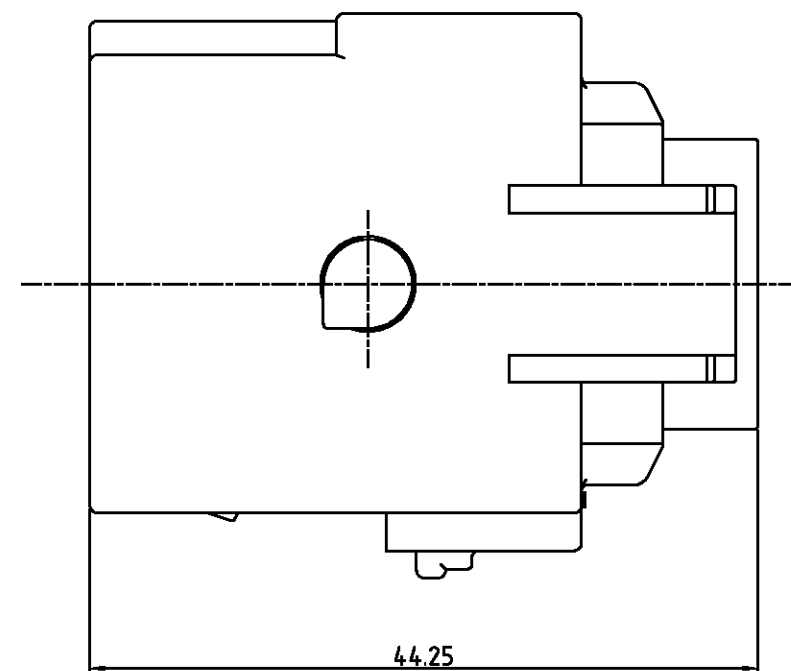
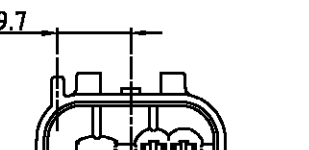
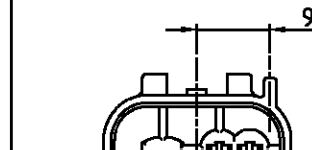



3D-VIEW 
SCALE 1/1



TYPE	Part NO.	WIRE SIZE(mm ²)	WIRE SEAL P/N (COLOR)	WIRE INSULATION DIAMETER(mm)
MT II	963902	0.2-0.5	964971-1 (RED)	1.2 - 1.6
	963904	0.5-1.0	963530-1 (GRAY)	1.7 - 1.9
			964972-1 (YELLOW)	1.9 - 2.1
			963531-1 (NATURAL)	CAVITY PLUG
SPT	964314	2.5-4.0	963245-1 (YELLOW)	3.4 - 3.7
			100132-1 (BLACK)	CAVITY PLUG

CODE "A"	CODE "B"
 <p>9.7</p> <p>SCALE 1/1</p>	 <p>9.7</p> <p>SCALE 1/1</p>

1. GENERAL TOLERANCE IS ± 0.3

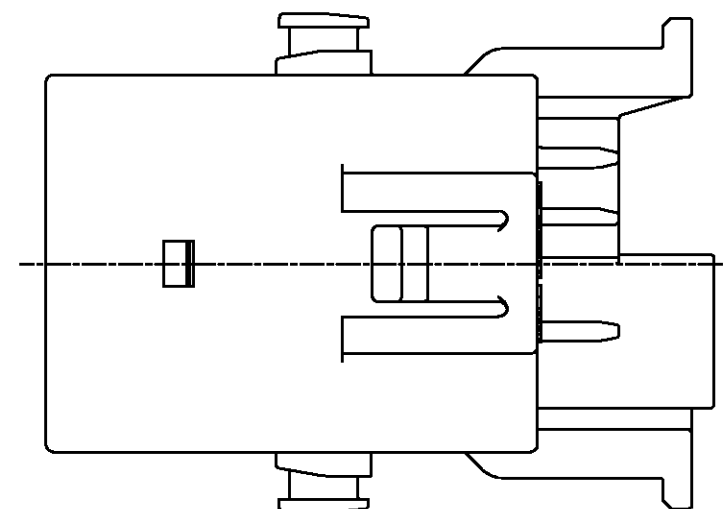
 2. CONDITION OF DELIVERY


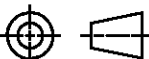
3. APPLIED PLUG ASS'Y P/N: X-1897071-X

4. APPLIED RECEPTACLE CONTACT P/N : TABLE 1

5. APPLIED WIRE COVER P/N : 1897076-2

6. KEY CODING : TABLE 2



control priority dimension;		"B"		GRAY		PA66-GF30		CAP HSG		1-1897075-3 ②	
<input checked="" type="checkbox"/> CRITICAL, <input checked="" type="checkbox"/> MAJOR, <input type="checkbox"/> MINOR		"A"		BLACK		PA66-GF30		CAP HSG		0-1897075-2	
<small>THE DRAWING IS CONTROLLED DOCUMENT FOR TYCO ELECTRONICS CORPORATION IT IS SUBJECT TO CHANGE AND THE CONTROLLING ENGINEERING ORGANIZATION SHOULD BE CONTACTED FOR THE LATEST REVISION.</small>		KEY CODING		COLOR		MATERIAL		DESCRIPTION		P/N	
DIMENSIONS: MM		TOLERANCES UNLESS OTHERWISE SPECIFIED:		DWN : IS WGD CHK : YH CHOI				AMP KOREA. kyungsan, korea			
 3rd ANGLE PROJECTION		DECOMALS : ± 0.3 ANGLES : ± 3°		APVD : JK SONG PRODUCT SPEC		NAME MTII/SPT HYBRID SEALED 12P CAP HOUSING					
MATERIAL SEE TABLE		FINISH		APPLICATION SPEC		SIZE A2		CAGE CODE 00779		DRAWING NO C- 1897075	
				WEIGHT						RESTRICTED TO -	
				CUSTOMER DRAWING		SCALE 2/1		SHEET 1 OF 1		REV A	

Mouser Electronics

Authorized Distributor

Click to View Pricing, Inventory, Delivery & Lifecycle Information:

[TE Connectivity:](#)

[1897075-2](#)