

4

3

2

1

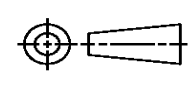
THIS DRAWING IS UNPUBLISHED. RELEASED FOR PUBLICATION
© COPYRIGHT ALL RIGHTS RESERVED.

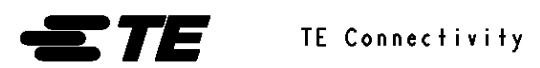
LOC	DIST	REVISIONS			
P	LTR	DESCRIPTION	DATE	DWN	APVD
	G1	ECR-14-001797	07FEB2014	GK	HMR

REPLACED BY OCEAN STYLE APPLICATOR PART NUMBER 2150051-2

FOR REPLACEMENT PARTS FOR APPLICATOR 567462
REFER TO ADDITIONAL PAGE(S). SPARE PARTS KIT (IF LISTED)
WILL REMAIN AVAILABLE.

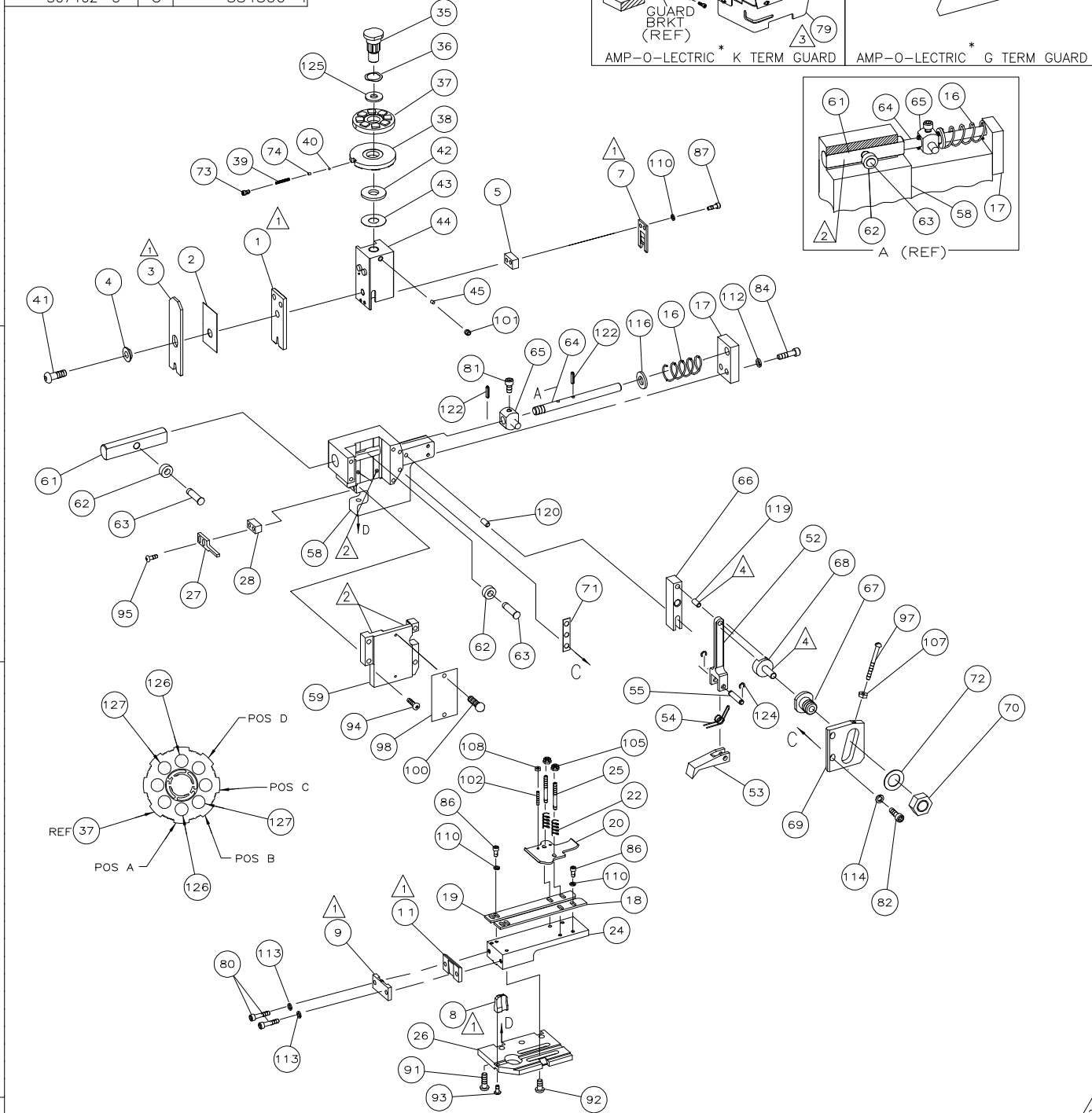
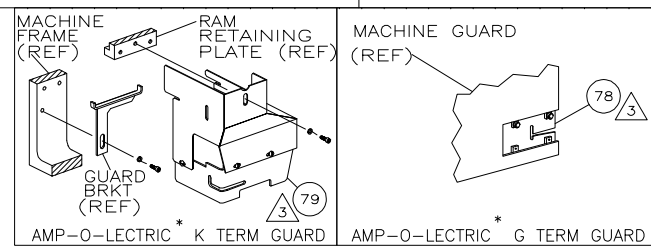
THE REPLACEMENT OCEAN STYLE APPLICATOR HAS THE
SAME TERMINATOR/PRESS INTERFACE AS APPLICATOR
567462

THIS DRAWING IS A CONTROLLED DOCUMENT.		DWN	GOPALAKRISHNA HV	
DIMENSIONS:		CHK	RAGHAVENDRA	
		APVD	RAGHAVENDRA	
		PRODUCT SPEC		
TOLERANCES UNLESS OTHERWISE SPECIFIED:		NAME		
0 PLC ±		END FEED HDM APPLICATOR		
1 PLC ±		SIZE	CAGE CODE	DRAWING NO
2 PLC ±		A3		©- 567462
3 PLC ±		RESTRICTED TO		
4 PLC ±				
ANGLES ±		CUSTOMER ACCESSIBLE PRODUCTION DRAWING		
MATERIAL	FINISH	WEIGHT	SCALE	SHEET 1 OF 2 REV G1

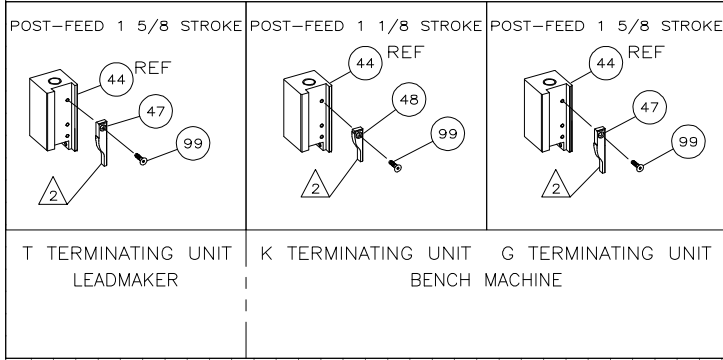


THIS DRAWING IS UNPUBLISHED. RELEASED FOR PUBLICATION
 © COPYRIGHT BY TYCO ELECTRONICS CORPORATION. ALL RIGHTS RESERVED.

PART NUMBER	REV	FIRST USED
567462-1	G	854400-1
567462-2	G	565435-5
567462-3	G	354500-1



* Trademark of AMP Incorporated



- 1 RECOMMENDED SPARE PARTS.
- 2 GREASE LIGHTLY.
- 3 GUARD MUST BE IN PLACE WHEN OPERATING APPLICATOR IN AMP-O-LECTRIC MACHINE.
- 4 LUBRICATE DAILY USING NO. 20 MACHINE OIL.
- 5. ITEMS WITH QTY OF REF SPECIFIED (EXCEPT ITEMS 78 AND 79) ARE USED ON ITEM 32.

TERMINAL NAME:	250 SERIES TAB W/O LATCH
	170341
TERM APPL SPEC	114-5052

CRIMPING DATA			
PAD LTR	CRIMP HEIGHT	WIRE SIZE	
A	.080 ±.002	12	
B	.068 ±.002	14	
C	NOT	USED	
D	NOT	USED	
CRIMP	SIZE	TYPE	RANGE
WIRE	.130	F	14-12
INSUL	.180	F	.114-.150
FEED	1.043	APPL INST	SET UP GAGE LAYOUT
		408-8039	458638-1 L1461
WIRE STRIP LENGTH	.145-.170		

QTY	REF	REF	REF	REF	PART NO	DESCRIPTION	ITEM NO
							129
2	2	2	-		8-354778-5	PIN, WIRE DISC (.2920)B	127
2	2	2	-		6-354778-1	PIN, WIRE DISC (.2800)A	126
1	1	1	-		986950-1	WASHER, FLAT PRECISION	125
REF	REF	REF	-		21045-3	RING, RET "C" (Ø.187)FD PIN	124
							123
REF	REF	REF	-		5-21028-1	PIN, STD SPRING (Ø.12)FD ADJ ROD	122
							121
REF	REF	REF	-		1-21030-7	PIN, DOWEL (Ø.187x1.50)HSG	120
REF	REF	REF	-		1-21030-1	PIN, DOWEL (Ø.187x.50)LEVER	119
							118
							117
REF	REF	REF	-		21899-4	WASHER, FLAT (Ø5/16)SCR ADJ	116
							115
REF	REF	REF	-		21024-5	WASHER, LOCK (NO.10)FD ADJ PL	114
2	2	2	-		21024-5	WASHER, LOCK (NO.10)SHEAR PL	113
REF	REF	REF	-		21024-5	WASHER, LOCK (NO.10)FD ROD GDE	112
							111
6	6	6	-		21024-4	WASHER, LOCK (NO.8)SHEAR BL	110
							109
2	2	2	-		21018-4	NUT, HEX (4-40)DRAG	108
REF	REF	REF	-		21018-5	NUT, HEX (6-32)FD ADJ PL	107
							106
2	2	2	-		21022-2	NUT, HEX SL (8-32)DRAG STUD	105
							104
							103
2	2	2	-		2-21006-6	SCR SKT SET (4-40x.62)DRAG	102
1	1	1	-		21009-2	SCR, SKT SET (1/4-20x.25)RAM	101
2	2	2	-		21017-2	SCR, DRIVE (#2x.19)ID PLATE	100
1	1	1	-		1-21002-7	SCR, BHC (6-32x.38)CAM	99
1	1	1	-		461264-1	PLATE, IDENTIFICATION	98
REF	REF	REF	-		6-23715-5	SCR, PAN HD (6-32x1.50)FEED ADJ	97
							96
2	2	2	-		2-21002-2	SCR, BHC (8-32x.50)STRIPPER	95
REF	REF	REF	-		2-21002-9	SCR, BHC (10-32x.75)HSG CAP	94
1	1	1	-		22733-8	SCR, BHC (8-32x.38 LW)ANVIL	93
4	4	4	-		3-21002-3	SCR, BHC (1/4-20x.50)ST GD PL	92
REF	REF	REF	-		2-22733-8	SCR, BHC (1/4-20x.62)BASE PL	91
							90
							89
							88
2	2	2	-		2-21000-9	SCR, SHC (8-32x.75)SLUG BLADE	87
4	4	4	-		2-21000-5	SCR, SHC (8-32x.25)STRIP GUIDE	86
							85
REF	REF	REF	-		3-21000-7	SCR, SKT CAP (10-32x.75)FD GDE	84
							83
REF	REF	REF	-		3-21000-6	SCR, SKT CAP (10-32x.62)FD ADJ P	82
REF	REF	REF	-		3-21000-4	SCR, SKT CAP (10-32x.38)PIVOT BL	81
2	2	2	-		3-21000-8	SCR, SKT CAP (10-32x.88)SH PL	80
-	REF	-	-		455745-1	GUARD, WINDOW	79
REF	-	-	-		679532-1	INSERT, GUARD	78
							77
							76
							75
1	1	1	-		690603-1	SPRING, ASSIST	74
1	1	1	-		23030-1	SCR, SKT CAP (6-32x.25)CP DSC	73
REF	REF	REF	-		458109-1	WASHER, FLAT (SPECIAL)	72
REF	REF	REF	-		690517-1	SPACER	71
							70
							69
							68
							67
							66
							65
							64
							63
							62
							61

LOC	DIST	REVISIONS			
P	LTR	DESCRIPTION	DATE	BY	APP'D
A	66				
G		ECR-07-021113	9-2007	MY	GB

-1	LEADMAKER	MECH POST FEED
-2	BENCH MODEL K	MECH-POST FEED
-3	BENCH MODEL G	MECH-POST FEED

REF	REF	REF	REF	REF	PART NO	DESCRIPTION	ITEM NO
REF	REF	REF	-		22594-8	NUT, HEX	70
REF	REF	REF	-		240628-1	PLATE, ADJ	69
REF	REF	REF	-		240626-1	SHAFT, PIVOT	68
REF	REF	REF	-		240633-1	BUSHING	67
REF	REF	REF	-		455680-1	LEVER, INTERMEDIATE	66
REF	REF	REF	-		240629-1	BLOCK, PIVOT	65
REF	REF	REF	-		240632-2	SCR, ADJ	64
REF	REF	REF	-		240659-3	PIN, CAM ROLLER	63
REF	REF	REF	-		240658-1	CAM, ROLLER	62
REF	REF	REF	-		454398-1	ROD, FEED	61
							60
REF	REF	REF	-		454220-1	CAP, RAM	59
REF	REF	REF	-		453736-1	HOUSING	58
							57
							56
REF	REF	REF	-		240624-1	PIN, FEED FINGER	55
REF	REF	REF	-		691499-1	SPRING, FEED FINGER	54
REF	REF	REF	-		240635-1	FINGER, FEED	53
REF	REF	REF	-		240634-1	LEVER, TERMINAL	52
							51
							50
							49
-	1	-	-		690501-3	CAM, POST FEED 1 1/8 ST	48
1	-	1	-		690501-4	CAM, POST-FEED 1 5/8 ST	47
							46
1	1	1	-		690191-1	PLUG, NYLON	45
1	1	1	-		455674-1	RAM	44
1	1	1	-		690125-1	WASHER, LAMINATED	43
1	1	1	-		690124-1	WASHER, RAM	42
1	1	1	-		7-21002-9	BOLT, CRIMPER (5/16-24x1.00)	41
1	1	1	-		23241-6	BALL, STEEL	40
1	1	1	-		690170-1	SPRING, COMPRESSION	39
1	1	1	-		690142-1	DISC, INSULATION	38
1	1	1	-		354777-1	WIRE DISC, PLASTIC	37
1	1	1	-		22480-5	WASHER, SPRING	36
1	1	1	-		690212-1	POST, RAM	35
							34
							33
1	1	1	-		458980-1	APPLICATOR, BASIC (SUB ASSY)	32
							31
							30
							29
1	1	1	-		3-690451-2	SPACER, STRIPPER	28
1	1	1	-		240639-1	STRIPPER	27
REF	REF	REF	-		455676-1	PLATE, BASE	26
2	2	2	-		22354-8	DRAG, STUD	25
1	1	1	-		455678-1	PLATE, STRIP GUIDE	24
							23
2	2	2	-		4-22281-1	SPRING, DRAG	22
							21
1	1	1	-		454177-1	DRAG, STOCK	20
1	1	1	-		1-458030-2	GUIDE, STRIP (REAR)	19
1	1	1	-		1-458031-2	GUIDE, STRIP (FRONT)	18
REF	REF	REF	-		454178-1	GUIDE, FEED ROD	17
REF	REF	REF	-		4-22284-9	SPRING, FEED RETURN	16
							15
							14
							13
							12
1	1	1	-		240833-7	PLATE, REAR SHEAR	11
							10
1	1	1	-		3-690482-2	PLATE, FRONT SHEAR	9
1	1	1	-		240655-8	ANVIL	8
1	1	1	-		690474-4	BLADE, SLUG	7
							6
							5
1	1	1	-		5-240641-5	SPACER, SLUG BLADE	5
1	1	1	-		238009-4	SPACER, BLOCK CRIMPER	4
1	1	1	-		4-683453-0	CRIMPER, INSULATION	3
1	1	1	-		1-455888-2	SPACER, CRIMPER	2
1	1	1	-		456410-4	CRIMPER, WIRE	1

Mouser Electronics

Authorized Distributor

Click to View Pricing, Inventory, Delivery & Lifecycle Information:

[TE Connectivity:](#)

[567462-2](#)