

This drawing involves proprietary design rights of Tyco Electronics Corporation, and all design, manufacture, reproduction, use and sale rights regarding the same are expressly reserved. It is submitted for a specific purpose and the recipient by accepting this drawing, assumes custody and control and agrees to take reasonable precautions; (a) that this drawing will not be copied and reproduced, in whole or in part, or its contents revealed in any manner, or to any person except to meet the purpose for which it was delivered and (b) that any special features peculiar to this design will not be incorporated in other projects without the expressed written permission of Tyco Electronics Corporation.

REVISIONS			
EC	REV	DESCRIPTION	DATE
0S1Q-0417-04	A	NEW RELEASE	11/22/04

6. MODULE INFORMATION

CONNECTOR	TYCO PART NUMBER	ELCON PART NUMBER	CATALOG MODULE #	QTY	SIZE NO.	CONTACT QTY	MATING PIN	MAX. CURRENT (PER CONTACT)	CONTACT SPACING	VOLTAGE RATING*
PIN	6651840-1	479-0852-10100A	FP0151	2	8	2	1.25 X 7.00 [.049 X .276]	35 AMPERES	7.50 [(.2953)]	250 VOLTS
			FP0516	1	ACTIVE RIGHT ANGLE GUIDE SOCKET					
PIN	6651840-2	479-0852-10300A	FP1151	2	8	2	1.25 X 7.00 [.049 X .276]	35 AMPERES	7.50 [(.2953)]	250 VOLTS
			FP1516	1	ACTIVE RIGHT ANGLE GUIDE SOCKET					

\*IAW IEC-950

NOTES: UNLESS OTHERWISE SPECIFIED.

1. PART NUMBER CHANGES AND OR DESIGN CHANGES AFFECTING ITEM INTERCHANGEABILITY REQUIRE PRIOR ELCON APPROVAL AND AUTHORIZATION BY REVISION TO THIS DRAWING.

2. MATERIALS:

INSULATORS: THERMOPLASTIC, GLASS REINFORCED, COLOR BLACK. UL94V-0 FLAMMABILITY RATED.

POWER CONTACTS: PHOSPHOR BRONZE ALLOY, COPPER ALLOY.

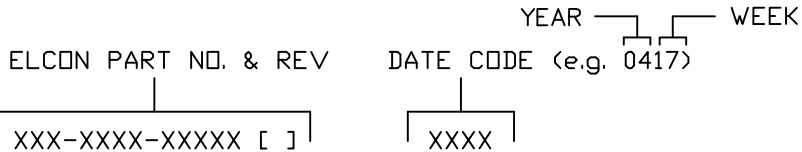
CROWN BANDS: BERYLLIUM COPPER ALLOY.

3. FINISHES:

CONTACTS: GOLD PLATED PER MIL-G-45204 TYPE II, CLASS 0, .000030" MIN. THK, OVER NICKEL PER QQ-N-290, CLASS 2, .000040" MIN. THICKNESS.

TERMINALS: TIN PLATED, MATTE FINISH, .000120" TO .000170" THICK.

4. ITEMS PROVIDED TO THIS SPECIFICATION TO BE PERMANENTLY IDENTIFIED PER THE FOLLOWING IDENTIFIER:

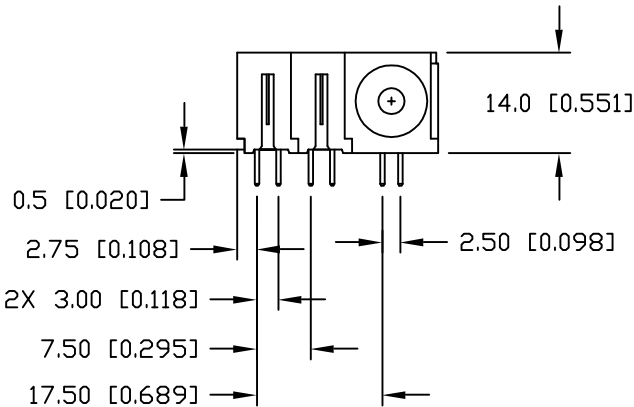
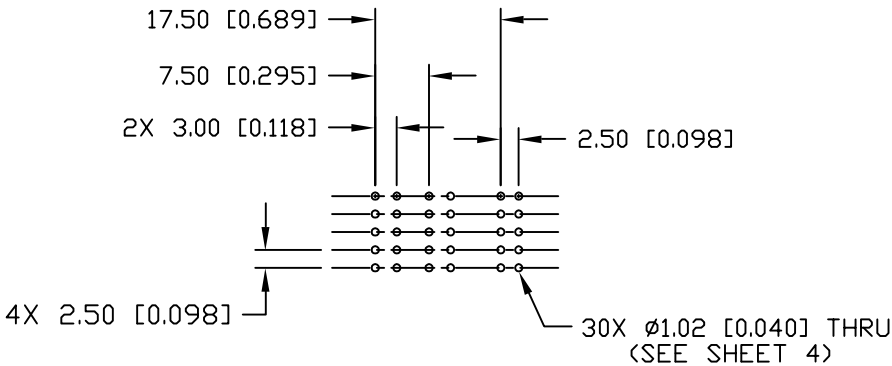
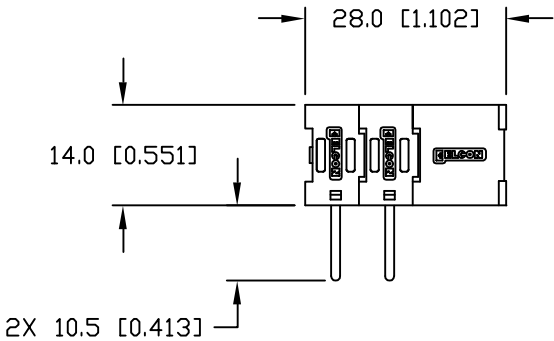
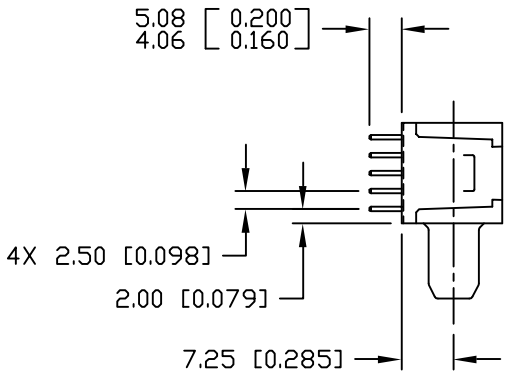


5. THIS CONNECTOR MATES WITH SOCKET CONNECTORS PN 278-0852-10200/-10400 AND PN 279-0852-10600.

<div>← MM OR MM [INCH] INCH</div> <div>THIRD ANGLE PROJECTION</div> <div>UNLESS OTHERWISE SPECIFIED DIMENSIONS ARE IN METRIC [INCHES]</div> <div>TOLERANCES</div> <div>ANGLES ± .5°</div> <div>DECIMALS</div> <div>.XX ± .25 [.010]</div> <div>.X ± .5 [.020]</div>	DRAWN R. F. A.	DATE 11/17/04	<div><b>tyco</b> Tyco Electronics Corporation <b>Electronics</b> Menlo Park, Ca 94025</div> <div><b>ELCON</b></div>	
	CHECKED		TITLE	
	APPROVED		PIN CONNECTOR, FLATPAQ RIGHT ANGLE, SOLDER TAILS	
	APPROVED		PN: 479-0852-10100A/479-0852-10300A	
	D. CHAU	11/22/04	SIZE	DWG NUMBER
	DCA APPROVED	11/30/04	<div>B</div>	<div>C = 6651840</div>
	M. ALIM			REV. A
	ACAD FILE NUMBER	C6651840A.DWG	DWG SCALE	1 = 1 SH 1 OF 4

This drawing involves proprietary design rights of Tyco Electronics Corporation, and all design, manufacture, reproduction, use and sale rights regarding the same are expressly reserved. It is submitted for a specific purpose and the recipient by accepting this drawing, assumes custody and control and agrees to take reasonable precautions; (a) that this drawing will not be copied and reproduced, in whole or in part, or its contents revealed in any manner, or to any person except to meet the purpose for which it was delivered and (b) that any special features peculiar to this design will not be incorporated in other projects without the expressed written permission of Tyco Electronics Corporation.

REVISIONS			
EC	REV	DESCRIPTION	DATE
		SEE SHEET 1	

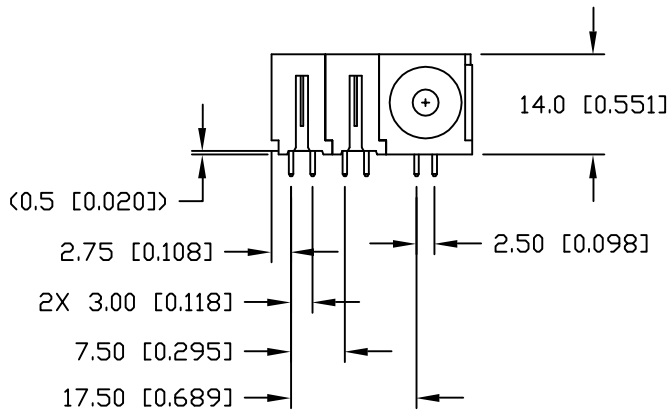
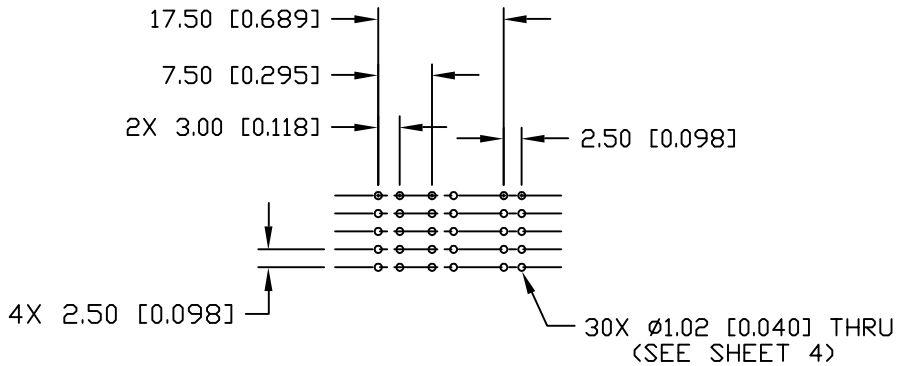
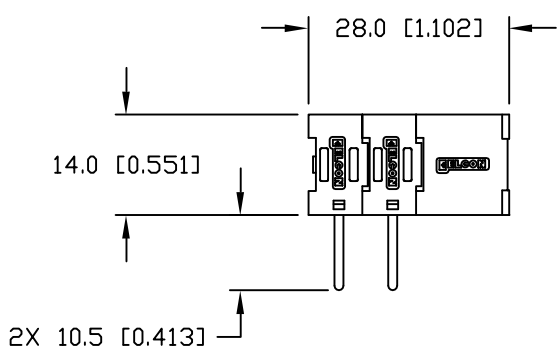
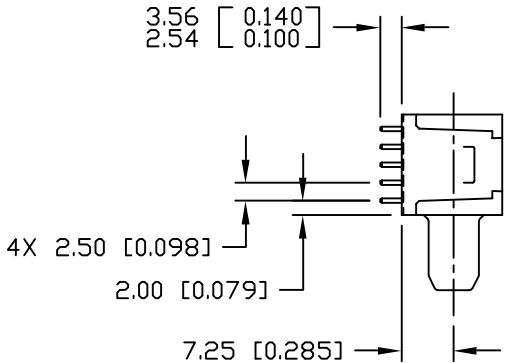


PRINTED CIRCUIT LAYOUT

<div>MM INCH</div> <div>OR MM [INCH]</div> <div></div> <div>THIRD ANGLE PROJECTION</div> <div>UNLESS OTHERWISE SPECIFIED DIMENSIONS ARE IN METRIC [INCHES]</div> <div>TOLERANCES</div> <div>ANGLES ± .5°</div> <div>DECIMALS</div> <div>.XX ± .25 [.010]</div> <div>.X ± .5 [.020]</div>	DRAWN R. F. A.	DATE 11/17/04	<div> Tyco Electronics Corporation Menlo Park, Ca 94025</div> <div></div>		
	CHECKED		TITLE		
	APPROVED		PIN CONNECTOR, FLATPAQ RIGHT ANGLE, STD SOLDER TAILS PN: 479-0852-10100A		
	APPROVED D. CHAU	11/22/04	SIZE B	DWG NUMBER C = 6651840	REV. A
	DCA APPROVED M. ALIM	11/30/04			
ACAD FILE NUMBER		C6651840A.DWG		DWG SCALE 1 = 1	SH 2 OF 4

This drawing involves proprietary design rights of Tyco Electronics Corporation, and all design, manufacture, reproduction, use and sale rights regarding the same are expressly reserved. It is submitted for a specific purpose and the recipient by accepting this drawing, assumes custody and control and agrees to take reasonable precautions; (a) that this drawing will not be copied and reproduced, in whole or in part, or its contents revealed in any manner, or to any person except to meet the purpose for which it was delivered and (b) that any special features peculiar to this design will not be incorporated in other projects without the expressed written permission of Tyco Electronics Corporation.

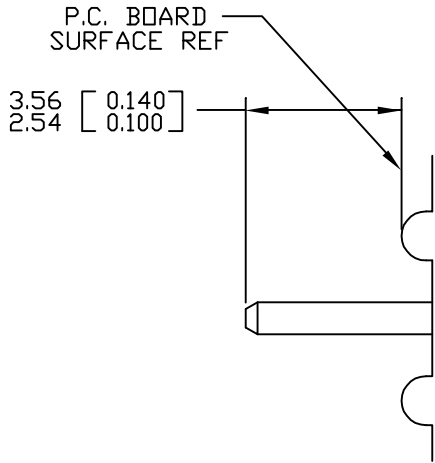
REVISIONS			
EC	REV	DESCRIPTION	DATE
		SEE SHEET 1	



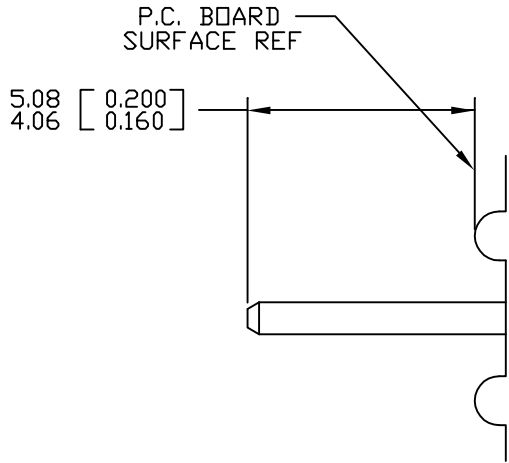
PRINTED CIRCUIT LAYOUT

<div>MM INCH</div> <div></div> <div>THIRD ANGLE PROJECTION</div> <div>UNLESS OTHERWISE SPECIFIED DIMENSIONS ARE IN METRIC [INCHES]</div> <div>TOLERANCES</div> <div>ANGLES ± .5°</div> <div>DECIMALS</div> <div>.XX ± .25 [.010]</div> <div>.X ± .5 [.020]</div>	DRAWN R. F. A.	DATE 11/17/04	<div> Tyco Electronics Corporation Menlo Park, Ca 94025</div> <div></div>		
	CHECKED		TITLE		
	APPROVED		PIN CONNECTOR, FLATPAQ RIGHT ANGLE, SHORT SOLDER TAILS PN: 479-0852-10300A		
	APPROVED				
	D. CHAU	11/22/04	SIZE	DWG NUMBER	REV.
	DCA APPROVED	11/30/04		= 6651840	A
M. ALIM					
ACAD FILE NUMBER		C6651840A.DWG		DWG SCALE 1 = 1	SH 3 OF 4

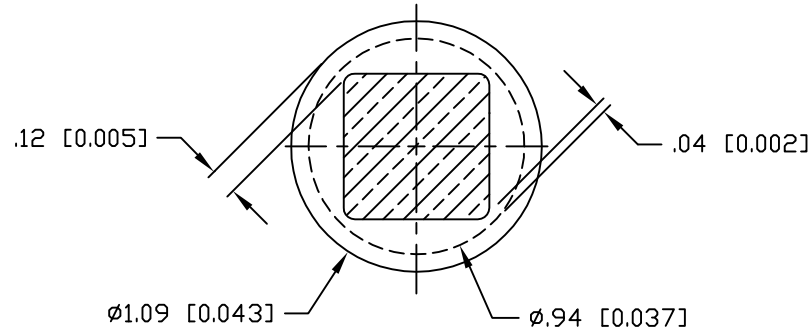
This drawing involves proprietary design rights of Tyco Electronics Corporation, and all design, manufacture, reproduction, use and sale rights regarding the same are expressly reserved. It is submitted for a specific purpose and the recipient by accepting this drawing, assumes custody and control and agrees to take reasonable precautions; (a) that this drawing will not be copied and reproduced, in whole or in part, or its contents revealed in any manner, or to any person except to meet the purpose for which it was delivered and (b) that any special features peculiar to this design will not be incorporated in other projects without the expressed written permission of Tyco Electronics Corporation.



SOLDER PIN DETAIL

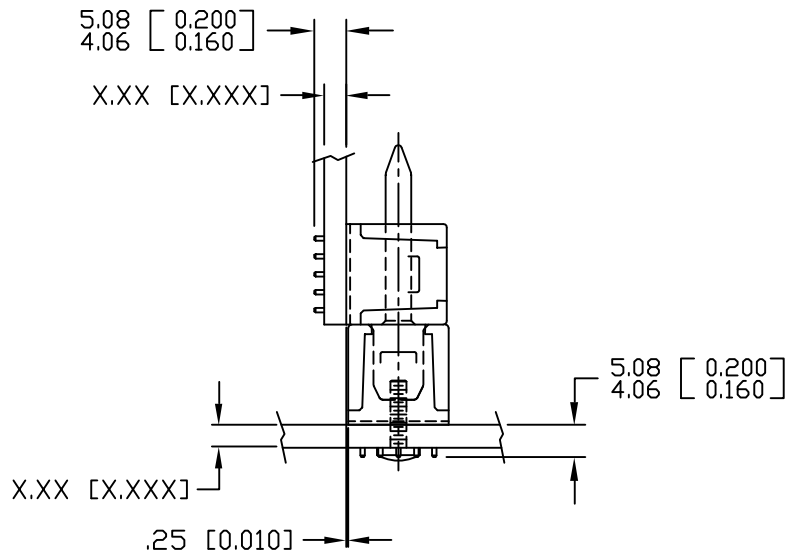


SOLDER PIN DETAIL

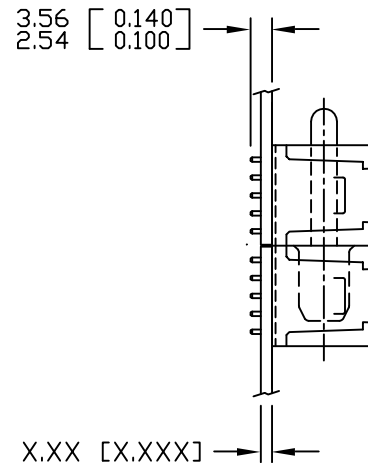
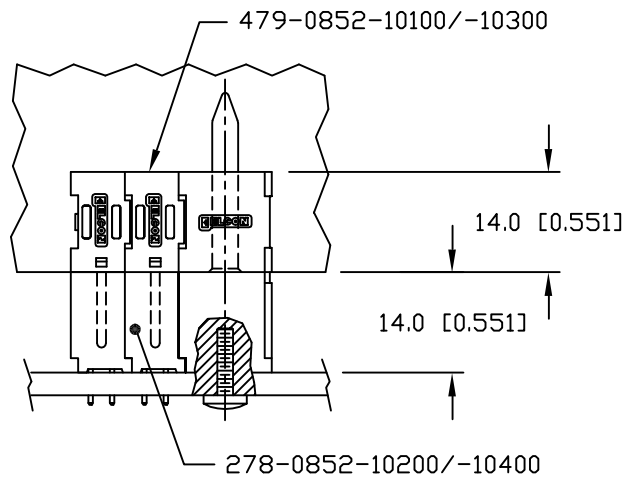


SOLDER TERMINATION AREA  
RECOMMENDED PRINTED CIRCUIT HOLE

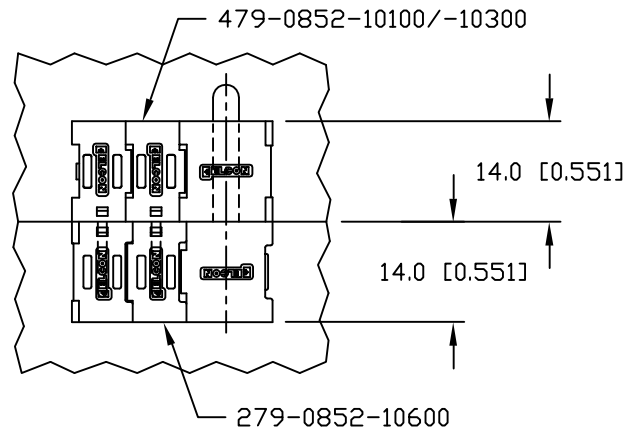
FINISHED HOLE:  $\phi 1.02 [0.040] \pm .08 [0.003]$   
DRILLED HOLE:  $\phi 1.15 [0.0453] \pm .013 [0.0005]$   
COPPER PLATE: .025 [0.0010] MINIMUM (PER SURFACE)  
TIN PLATE: .008 [0.0003] MINIMUM (PER SURFACE)



MATED CONDITION



MATED CONDITION



<div>MM INCH</div> <div></div> <div>THIRD ANGLE PROJECTION</div> <div>UNLESS OTHERWISE SPECIFIED DIMENSIONS ARE IN METRIC [INCHES]</div> <div>TOLERANCES</div> <div>ANGLES <math>\pm .5^\circ</math></div> <div>DECIMALS</div> <div>.XX <math>\pm .25 [0.010]</math></div> <div>.X <math>\pm .5 [0.020]</math></div>	DRAWN R. F. A.	DATE 11/17/04	<div> Tyco Electronics Corporation Menlo Park, Ca 94025</div> <div></div>		
	CHECKED		TITLE		
	APPROVED		USER INFORMATION SOLDER TAIL TERMINATION AND MATED CONDITION		
	APPROVED				
	D. CHAU	11/22/04	SIZE B	DWG NUMBER C = 6651840	REV. A
ACAD FILE NUMBER C6651840A.DWG			DWG SCALE 1 = 1	SH 4 OF 4	

# Mouser Electronics

Authorized Distributor

Click to View Pricing, Inventory, Delivery & Lifecycle Information:

[TE Connectivity:](#)

[6651840-1](#)