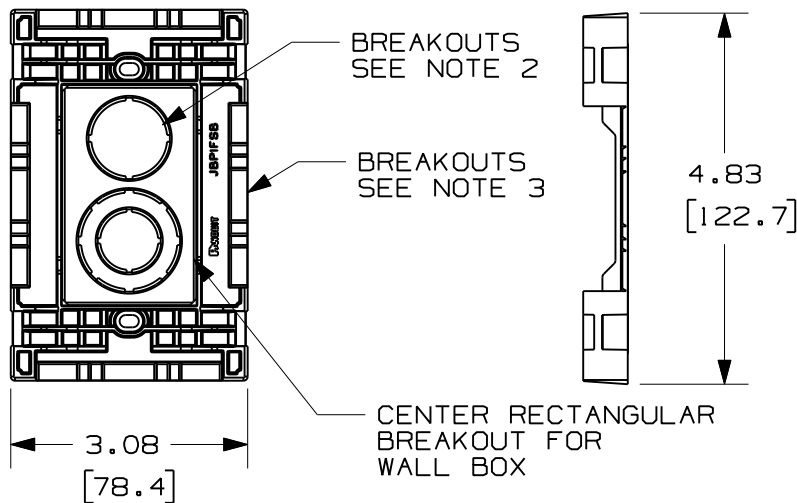
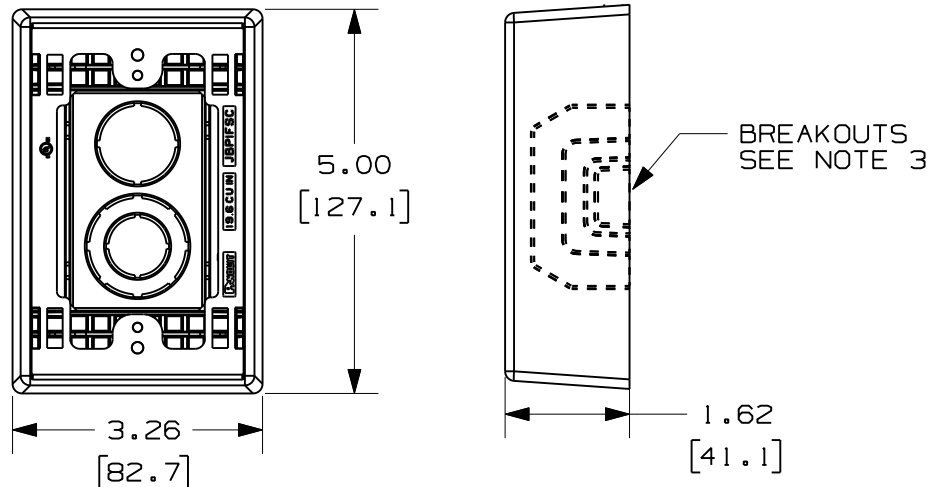


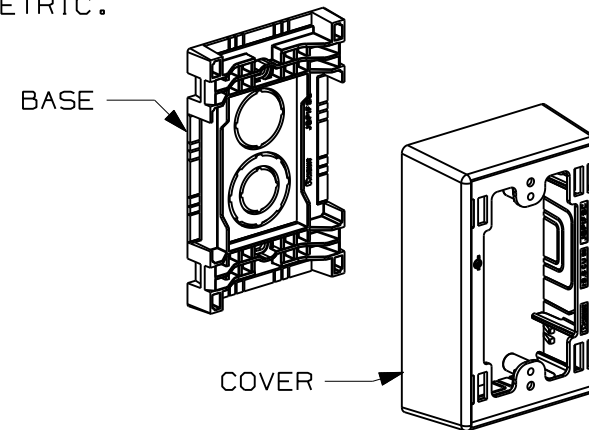
THIS COPY IS PROVIDED ON A RESTRICTED BASIS AND IS NOT TO BE USED IN ANY WAY DETRIMENTAL TO THE INTERESTS OF PANDUIT CORP.



PANDUIT P/N	WEIGHT/PC	VOLUME CU. IN./CC
JBP1FS	0.21 LB/PC (97.3 g/PC)	19.6 (321)

NOTES:

1. SEE CURRENT CATALOG FOR ADDITIONAL PART SUFFIXES TO INDICATE COLOR AND OR PACKAGE QUANTITY.
2. CONCENTRIC BREAKOUTS TO ACCOMMODATE CONDUIT SIZES OF 1/2", 3/4", AND 1" DIAMETERS.
3. BREAKOUTS ARE PROVIDED FOR LD, LDP, LDPH, LDS, AND T45 RACEWAYS.
4. COVER IS EXTENDED OUT AND DOWN AROUND SIDES OF BASE WHEN ASSEMBLED.
5. DIMENSIONS IN PARENTHESES ARE IN METRIC.



CAD FILENAME/LAYERS		D39908BB_DC_JBP1FS/01B	
PANDUIT		CORP. TINLEY PARK, ILLINOIS	
1 GANG POWER SNAP-TOGETHER JUNCTION BOX (JBP1FS)		CUSTOMER DRAWING	
UNLESS OTHERWISE SPECIFIED, DIMENSIONAL TOLERANCES ARE: (.X) ± (.XXX) ± (.XX) ±.03(.8) ANGLES ±		UNLESS OTHERWISE SPECIFIED, ALL DIMENSIONS ARE GIVEN IN INCHES, THIRD ANGLE PROJECTION.	
2	11-09-09	BOK	RMHI
1	10-27-09	BOK	RMHI
R	5-13-09	BOK	RMHI
REV	DATE	BY	CHK
DESCRIPTION		ECN	CHK
RELEASED TO PRODUCTION		39908-02	RMHI
A. UPDATED DRAWING WITH LATEST COMPONENT GEOMETRY			
DRAWING RELEASED			
DRAWN BY		MAT'L:	SCALE
BOK		PVC	NONE
DATE		DRAWING NO.	DWG
5-13-09		39908-02	A
CHECKED BY			SIZE
RMHI			

Mouser Electronics

Authorized Distributor

Click to View Pricing, Inventory, Delivery & Lifecycle Information:

Panduit:

[JBP1FSIG](#) [JBP1FSWH](#) [JBP1FSIW](#) [JBP1FSEI](#)