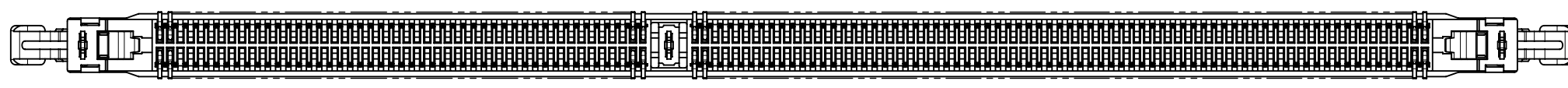
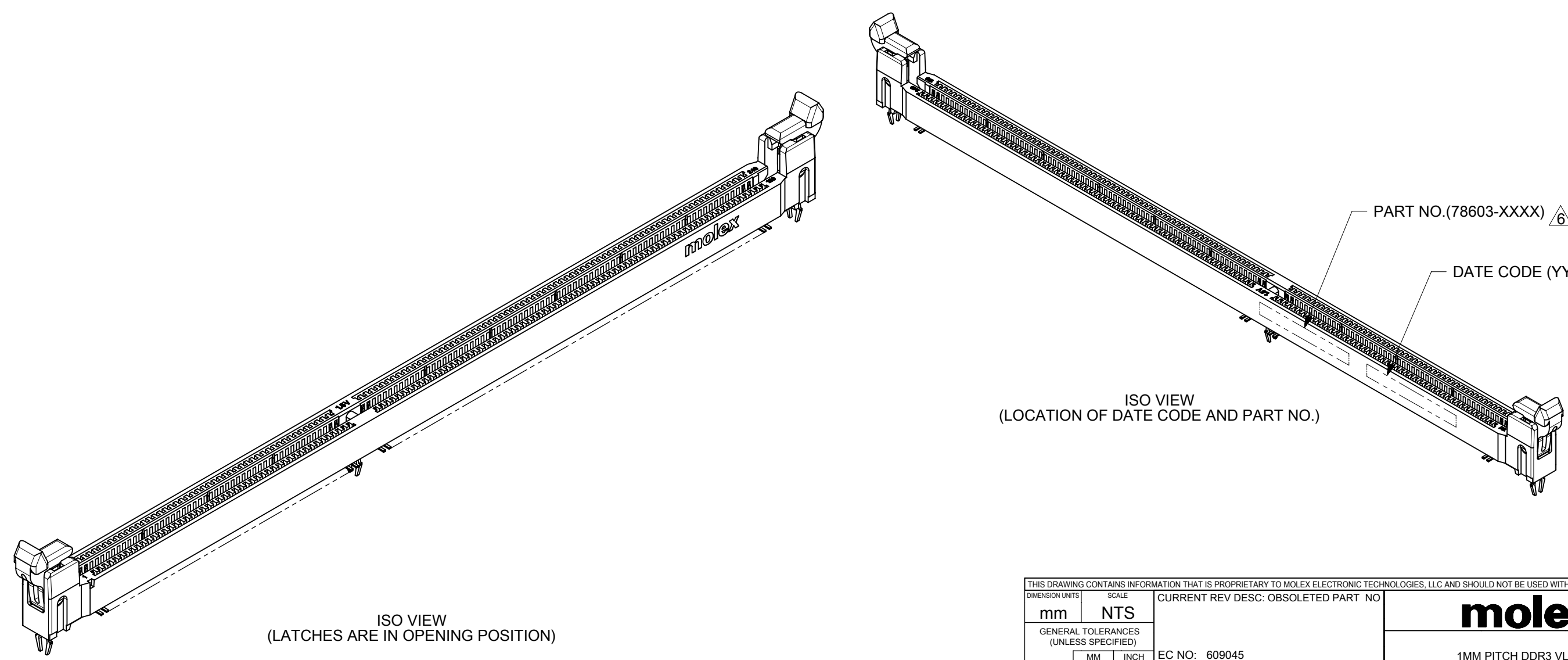


TOP VIEW
(LATCHES ARE IN OPENING POSITION)

CENTER LINE OF 128.60 MIN FEATURE

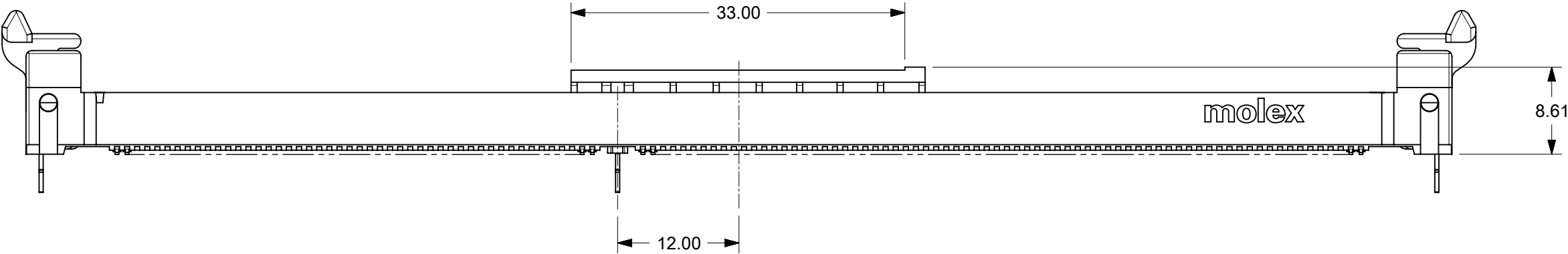


BOTTOM VIEW
(LATCHES ARE IN OPENING POSITION)

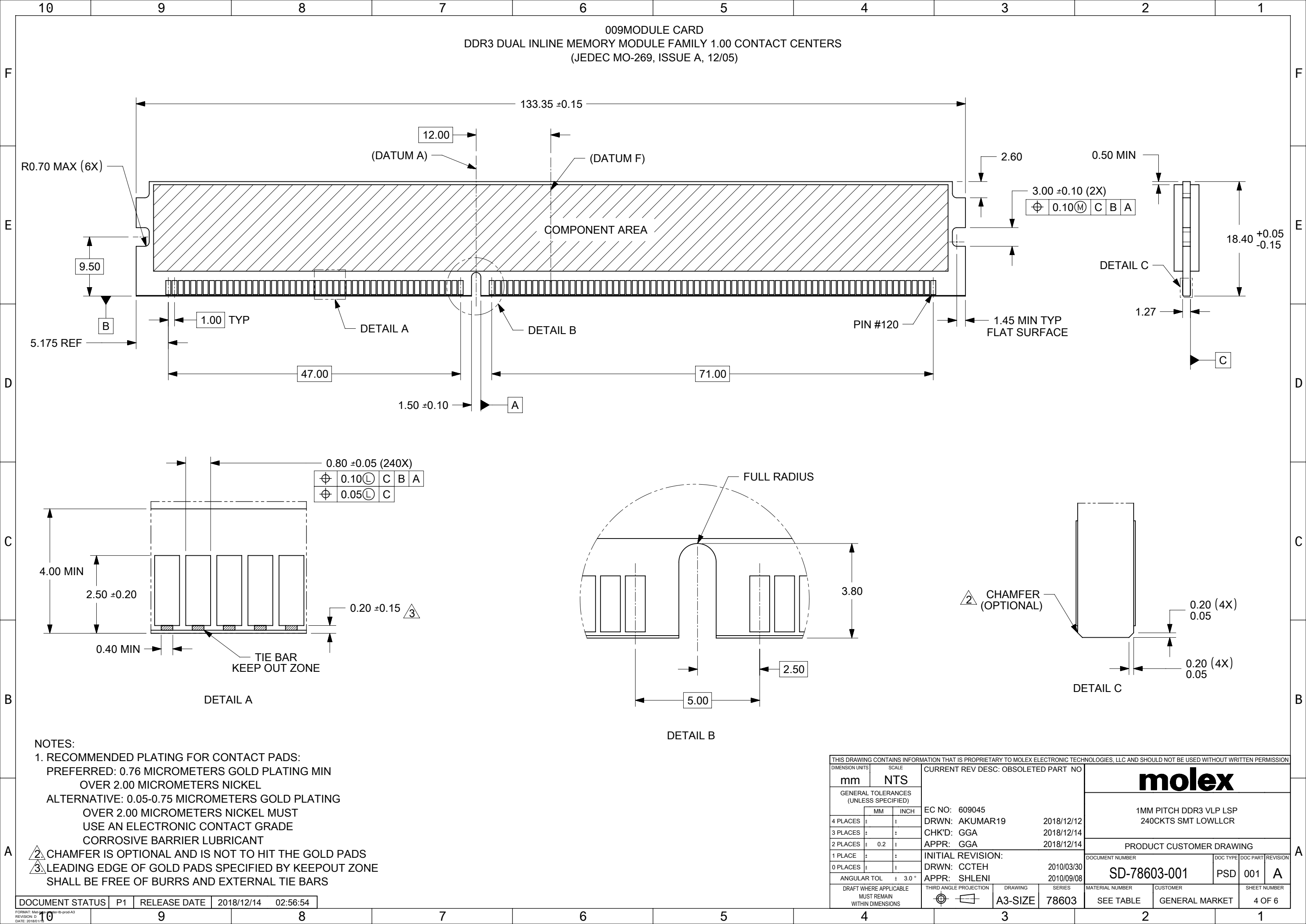


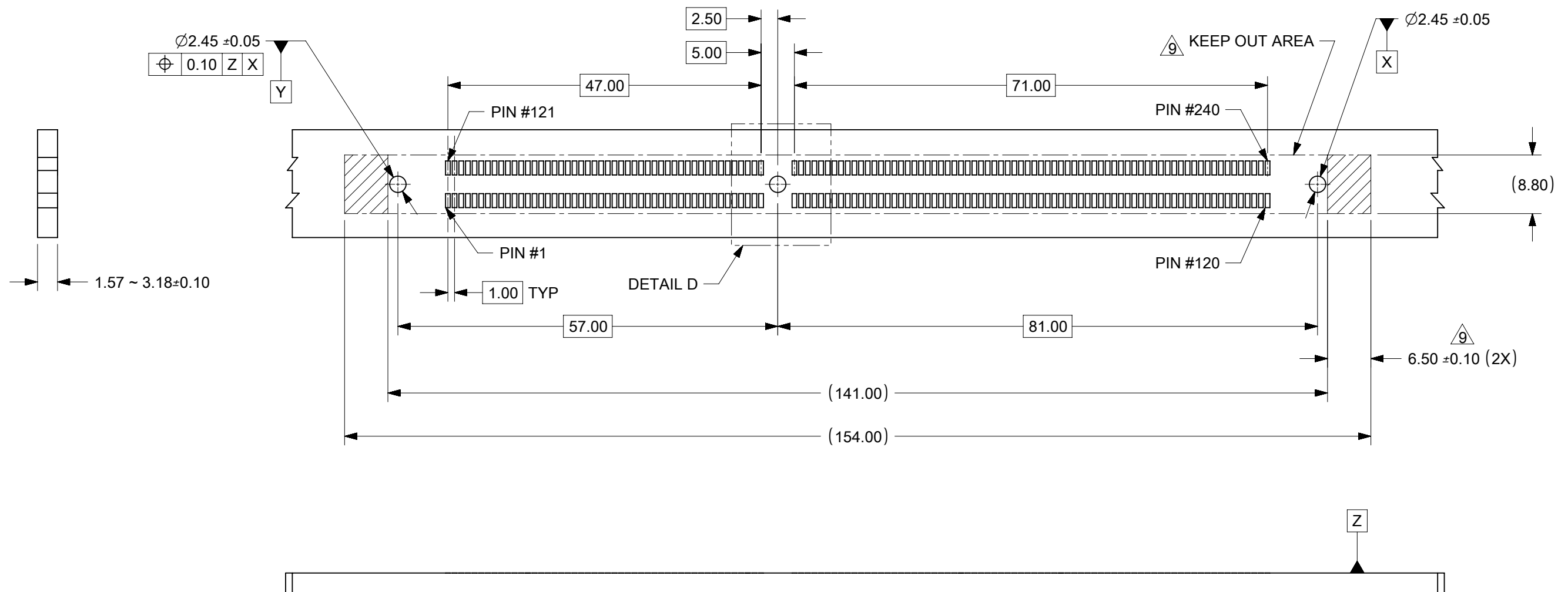
THIS DRAWING CONTAINS INFORMATION THAT IS PROPRIETARY TO MOLEX ELECTRONIC TECHNOLOGIES, LLC AND SHOULD NOT BE USED WITHOUT WRITTEN PERMISSION													
DIMENSION UNITS		SCALE		CURRENT REV DESC: OBSOLETE PART NO				<div>molex</div> <div>1MM PITCH DDR3 VLP LSP 240CKTS SMT LOWLLCR</div>					
mm		NTS											
GENERAL TOLERANCES (UNLESS SPECIFIED)				EC NO: 609045 DRWN: AKUMAR19 2018/12/12 CHK'D: GGA 2018/12/14 APPR: GGA 2018/12/14									
		MM		INCH		PRODUCT CUSTOMER DRAWING							
4 PLACES		±		±									
3 PLACES		±		±		DOCUMENT NUMBER SD-78603-001							
2 PLACES		± 0.2		±						DOC TYPE PSD		DOC PART 001	
1 PLACE		±		±						REVISION A			
0 PLACES		±		±									
ANGULAR TOL		± 3.0 °		INITIAL REVISION: DRWN: CCTEH 2010/03/30 APPR: SHLENI 2010/09/08									
DRAFT WHERE APPLICABLE MUST REMAIN WITHIN DIMENSIONS				THIRD ANGLE PROJECTION		DRAWING		SERIES		MATERIAL NUMBER			
						A3-SIZE		78603		CUSTOMER			
										SEE TABLE			
								GENERAL MARKET		SHEET NUMBER 2 OF 6			

PICK AND PLACE CAP VERSION

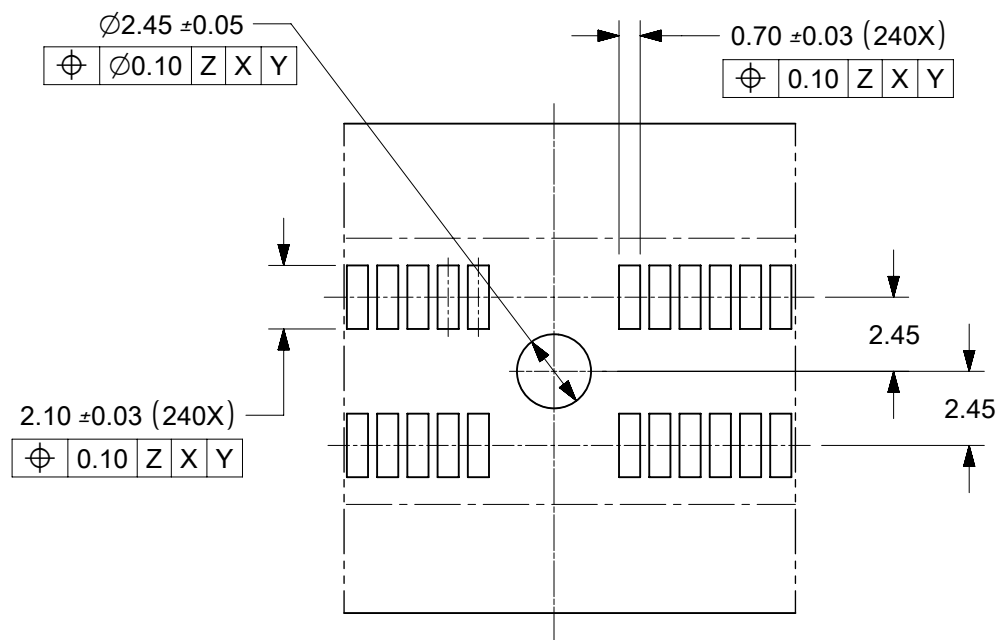


THIS DRAWING CONTAINS INFORMATION THAT IS PROPRIETARY TO MOLEX ELECTRONIC TECHNOLOGIES, LLC AND SHOULD NOT BE USED WITHOUT WRITTEN PERMISSION											
DIMENSION UNITS		SCALE		CURRENT REV DESC: OBSOLETE PART NO				<div>molex</div>			
mm		NTS									
GENERAL TOLERANCES (UNLESS SPECIFIED)				EC NO: 609045 DRWN: AKUMAR19 2018/12/12 CHK'D: GGA 2018/12/14 APPR: GGA 2018/12/14				1MM PITCH DDR3 VLP LSP 240CKTS SMT LOWLLCR			
		MM	INCH					PRODUCT CUSTOMER DRAWING			
4 PLACES	±		±								
3 PLACES	±		±								
2 PLACES	±	0.2	±								
1 PLACE	±		±	INITIAL REVISION: DRWN: CCTEH 2010/03/30 APPR: SHLENI 2010/09/08				DOCUMENT NUMBER		DOC TYPE	DOC PART
0 PLACES	±		±					SD-78603-001		PSD	001
ANGULAR TOL ± 3.0 °										REVISION	A
DRAFT WHERE APPLICABLE MUST REMAIN WITHIN DIMENSIONS				THIRD ANGLE PROJECTION		DRAWING	SERIES	MATERIAL NUMBER		CUSTOMER	
						A3-SIZE	78603	SEE TABLE		GENERAL MARKET	
										SHEET NUMBER	
										3 OF 6	

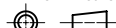




RECOMMENDED STENCIL THICKNESS = 150 MICROMETERS
RECOMMENDED PCB THICKNESS = 1.57MM ~ 3.18MM



DETAIL D

THIS DRAWING CONTAINS INFORMATION THAT IS PROPRIETARY TO MOLEX ELECTRONIC TECHNOLOGIES, LLC AND SHOULD NOT BE USED WITHOUT WRITTEN PERMISSION															
DIMENSION UNITS		SCALE		CURRENT REV DESC: OBSOLETE PART NO		<div>molex</div>									
mm		NTS													
GENERAL TOLERANCES (UNLESS SPECIFIED)				EC NO: 609045 DRWN: AKUMAR19 2018/12/12 CHK'D: GGA 2018/12/14 APPR: GGA 2018/12/14		1MM PITCH DDR3 VLP LSP 240CKTS SMT LOWLLCR									
	MM	INCH	PRODUCT CUSTOMER DRAWING												
4 PLACES	±	±													
3 PLACES	±	±													
2 PLACES	± 0.2	±													
1 PLACE	±	±													
0 PLACES	±	±	INITIAL REVISION: DRWN: CCTEH 2010/03/30 APPR: SHLENI 2010/09/08		DOCUMENT NUMBER SD-78603-001		DOC TYPE PSD		DOC PART 001		REVISION A				
ANGULAR TOL		± 3.0°													
DRAFT WHERE APPLICABLE MUST REMAIN WITHIN DIMENSIONS				THIRD ANGLE PROJECTION		DRAWING A3-SIZE		SERIES 78603		MATERIAL NUMBER SEE TABLE		CUSTOMER GENERAL MARKET		SHEET NUMBER 5 OF 6	
															

PART NUMBER	VOLTAGE KEY POSITION	PLATING OPTION	HOUSING COLOR	PICK & PLACE CAP	LATCH COLOR
78603-0002	CENTER 1.5V	0.76 μ-METER /30 μ-INCH MIN. GOLD ON CONTACT 2.54 μ-METER /100 μ-INCH MIN. PURE TIN (MATTE) ON SOLDERTAILS 1.27 μ-METER /50 μ-INCH MIN. NICKEL UNDERPLATE	BLACK	NO	NATURAL
78603-0003					BLUE
78603-0502				YES	NATURAL
78603-0503					BLUE

THIS DRAWING CONTAINS INFORMATION THAT IS PROPRIETARY TO MOLEX ELECTRONIC TECHNOLOGIES, LLC AND SHOULD NOT BE USED WITHOUT WRITTEN PERMISSION

DIMENSION UNITS

mm

SCALE

NTS

GENERAL TOLERANCES (UNLESS SPECIFIED)

MM

INCH

4 PLACES

±

±

3 PLACES

±

±

2 PLACES

±

0.2

±

1 PLACE

±

±

0 PLACES

±

±

ANGULAR TOL

±

3.0 °

DRAFT WHERE APPLICABLE

MUST REMAIN

WITHIN DIMENSIONS

CURRENT REV DESC: OBSOLETE

PART NO

EC NO: 609045

DRWN: AKUMAR19

CHK'D: GGA

APPR: GGA

INITIAL REVISION:

DRWN: CCTEH

APPR: SHLENI

2018/12/12

2018/12/14

2018/12/14

2010/03/30

2010/09/08

DOCUMENT NUMBER

SD-78603-001

DOC TYPE

PSD

DOC PART

001

REVISION

A

PRODUCT CUSTOMER DRAWING

DOCUMENT NUMBER

SD-78603-001

DOC TYPE

PSD

DOC PART

001

REVISION

A

MATERIAL NUMBER

SEE TABLE

CUSTOMER

GENERAL MARKET

SHEET NUMBER

6 OF 6

THIRD ANGLE PROJECTION

DRAWING

A3-SIZE

SERIES

78603

1MM PITCH DDR3 VLP LSP

240CKTS SMT LOWLLCR

Mouser Electronics

Authorized Distributor

Click to View Pricing, Inventory, Delivery & Lifecycle Information:

Molex:

[78603-0002](#) [78603-0003](#)