

Customer Information Sheet

DRAWING No.: M80-881XXXX

SHEET 2 OF 2

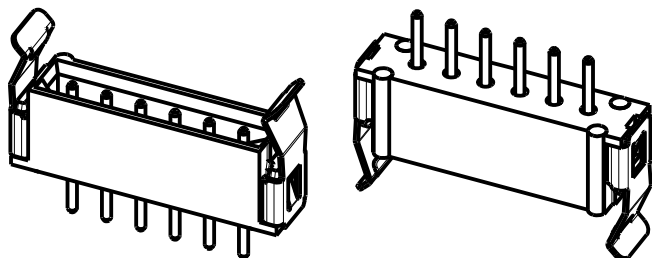
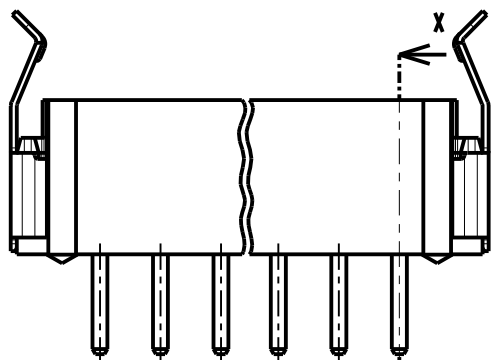
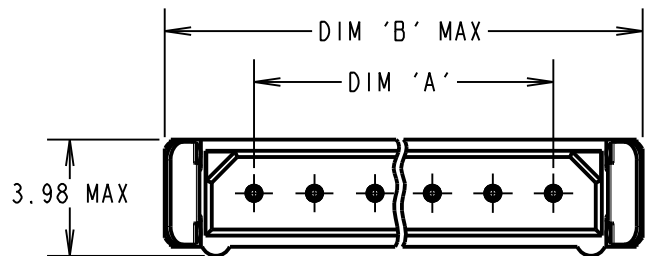
IF IN DOUBT - ASK

©

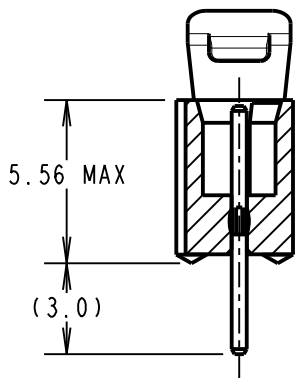
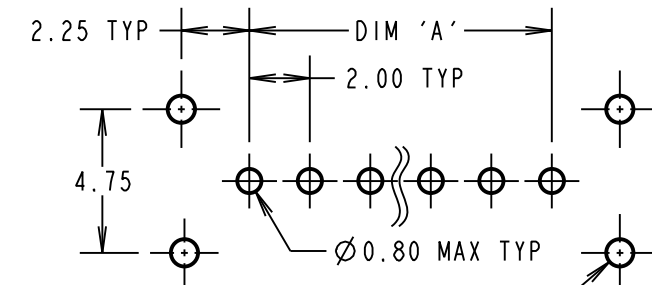
NOT TO SCALE

THIRD ANGLE PROJECTION

ALL DIMENSIONS IN mm



RECOMMENDED PCB LAYOUT



SECTION X-X

NOTES:

- 2-OFF STRAIN RELIEF STRAPS M80-0030006 MAY BE USED WITH EACH CONNECTOR.

SPECIFICATIONS:

MATERIAL:
 MOULDING = GLASS-FILLED POLYAMIDE 46, UL94V-0, BLACK
 CONTACTS = PHOSPHOR BRONZE
 LATCHES = BERYLLIUM COPPER

FINISH:
 22 = 0.75µ GOLD ON CONTACT AREA, 3µ 90/10 TIN/LEAD ON TAILS
 42 = 0.75µ GOLD ON CONTACT AREA, 3.0µ 100% TIN OVER NICKEL ON TAILS
 45 = 0.75µ GOLD

ELECTRICAL:
 CURRENT RATING AT 25°C = 3.0A MAX
 CURRENT RATING AT 85°C = 2.2A MAX
 WORKING VOLTAGE = 800V AC/DC
 VOLTAGE PROOF = 1200V AC/DC
 CONTACT RESISTANCE = 25 mΩ MAX
 INSULATION RESISTANCE = 100 MΩ MIN

MECHANICAL:
 DURABILITY = 500 OPERATIONS
 INSERTION FORCE (Ø0.5mm GAUGE) = 2.8N MAX
 WITHDRAWAL FORCE (Ø0.5mm GAUGE) = 0.2N MIN

ENVIRONMENTAL:
 TEMPERATURE RANGE = -55°C TO +125°C

PACKING:
 TUBE
 FOR COMPLETE SPECIFICATION, SEE COMPONENT SPECIFICATION C005XX (LATEST ISSUE)

PART No.	No. OF CONTACTS	DIM 'A'	DIM 'B'
M80-88102XX	2	2.00	8.10
M80-88103XX	3	4.00	10.10
M80-88104XX	4	6.00	12.10
M80-88105XX	5	8.00	14.10
M80-88106XX	6	10.00	16.10
M80-88107XX	7	12.00	18.10
M80-88117XX	17	32.00	38.10
M80-88122XX	22	42.00	48.10

ORDER CODE:

M80-881XXXX

TOTAL No. OF CONTACTS

02, 03, 04, 05,
06, 07, 17, 22

FINISH

22 - SELECTIVE GOLD + TIN/LEAD
 42 - SELECTIVE GOLD / 100% TIN
 45 - GOLD

SB	6	06.03.12	11672
NAME	ISS.	DATE	C/NOTE
APPROVED: S.BENNETT			
CHECKED: S.FLOWER			
DRAWN: B. M. KENT			
CUSTOMER REF.:			
ASSEMBLY DRG:			

HARWIN

www.harwin.com
 technical@harwin.com

THIS DRAWING AND ANY INFORMATION OR DESCRIPTIVE MATTER SET OUT HEREON ARE CONFIDENTIAL AND COPYRIGHT PROPERTY OF THE HARWIN GROUP AND MUST NOT BE DISCLOSED, LOANED, COPIED OR USED FOR MANUFACTURING, TENDERING OR FOR ANY OTHER PURPOSE WITHOUT THEIR WRITTEN PERMISSION.

TOLERANCES

X. = ±1mm
 X.X = ±0.25mm
 X.XX = ±0.10mm
 X.XXX = ±0.01mm

ANGLES = ±5°
 UNLESS STATED

MATERIAL:

SEE ABOVE

FINISH:

SEE ABOVE

S/AREA:

mm²

TITLE:

DATAMATE SIL VERTICAL
 PC-TAIL MALE
 FRICTION LATCH

DRAWING NUMBER:

M80-881XXXX

SHT
 2 OF 2

Mouser Electronics

Authorized Distributor

Click to View Pricing, Inventory, Delivery & Lifecycle Information:

[Harwin:](#)

[M80-8811742](#) [M80-8812242](#) [M80-8810642](#) [M80-8810442](#) [M80-8810242](#) [M80-8810542](#) [M80-8810342](#) [M80-8810742](#) [M80-8810545](#) [M80-8810445](#) [M80-8810245](#) [M80-8810645](#) [M80-8810745](#) [M80-8811745](#) [M80-8812245](#) [M80-7480642](#) [M80-7480645](#) [M80-7480742](#) [M80-7480745](#) [M80-7481742](#) [M80-7481745](#) [M80-7482242](#) [M80-7482245](#) [M80-8810322](#) [M80-8810522](#)