

4

3

2

1

THIS DRAWING IS UNPUBLISHED.

RELEASED FOR PUBLICATION

© COPYRIGHT

ALL RIGHTS RESERVED.

LOC

DIST

REVISIONS

P	LTR	DESCRIPTION	DATE	DWN	APVD
	B2	ECR-14-002312	17FEB2014	GK	HMR

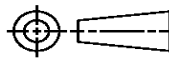
REPLACED BY OCEAN STYLE APPLICATOR PART
NUMBER 2151370-1

FOR REPLACEMENT PARTS FOR APPLICATOR 1855057
REFER TO ADDITIONAL PAGE(S). SPARE PARTS KIT (IF LISTED)
WILL REMAIN AVAILABLE.

THE REPLACEMENT OCEAN STYLE APPLICATOR HAS THE
SAME TERMINATOR/PRESS INTERFACE AS APPLICATOR
1855057

THIS DRAWING IS A CONTROLLED DOCUMENT.		DWN	GOPALAKRISHNA HV			
		CHK	RAGHAVENDRA			
		APVD	RAGHAVENDRA			
		PRODUCT SPEC				
		APPLICATION SPEC				
		WEIGHT				
		CUSTOMER DRAWING		SCALE	SHEET 1 OF 2	
				REV	B2	

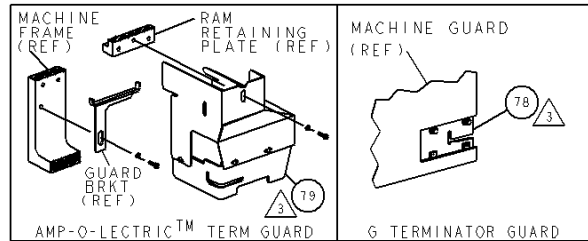
TE Connectivity	
END FEED HDM APPLICATOR FINE ADJUST	
SIZE	CAGE CODE
DRAWING NO	RESTRICTED TO
A3	©- 1855057

DIMENSIONS:	TOLERANCES UNLESS OTHERWISE SPECIFIED:
	0 PLC ± 1 PLC ± 2 PLC ± 3 PLC ± 4 PLC ± ANGLES ±

MATERIAL	FINISH

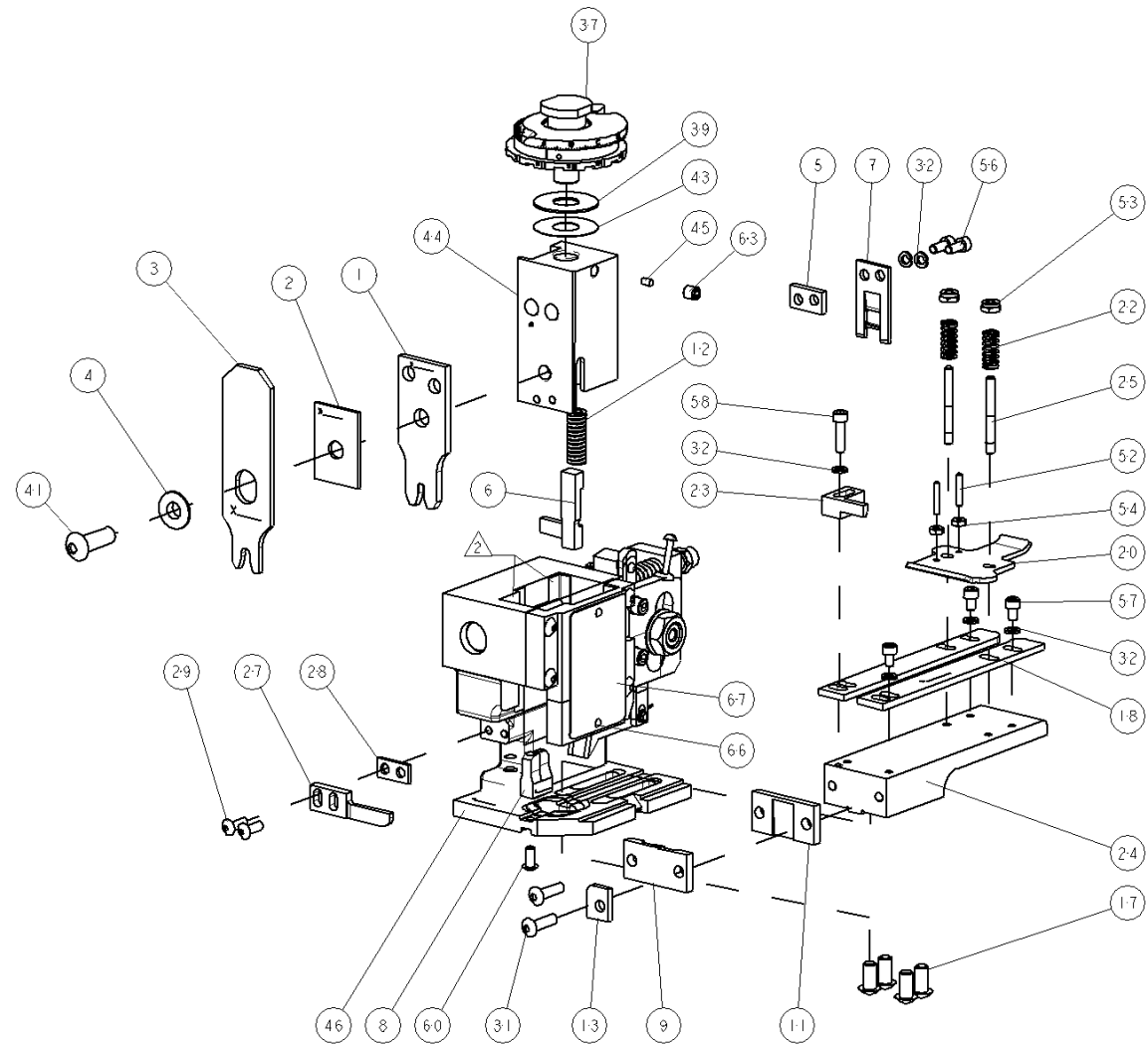
8		7		
THIS DRAWING IS UNPUBLISHED		20		
© COPYRIGHT 20 BY TYCO ELECTRONICS CORPORATION. ALL RIGHTS RESERVED.				
PART NUMBER	REV	FIRST USED	POWER UNIT	FEED TYPE
1855057-1	B	122500-1	LEADMAKER & BENCH MODEL G	POST FEED
1855057-2	B	565435-5	BENCH MODEL K	POST FEED
7-1855057-7	A	-	SPARE PARTS	-

- △ RECOMMENDED SPARE PARTS
△ GREASE LIGHTLY
△ GUARD MUST BE IN PLACE WHEN OPERATING APPLICATOR IN A BENCH MACHINE

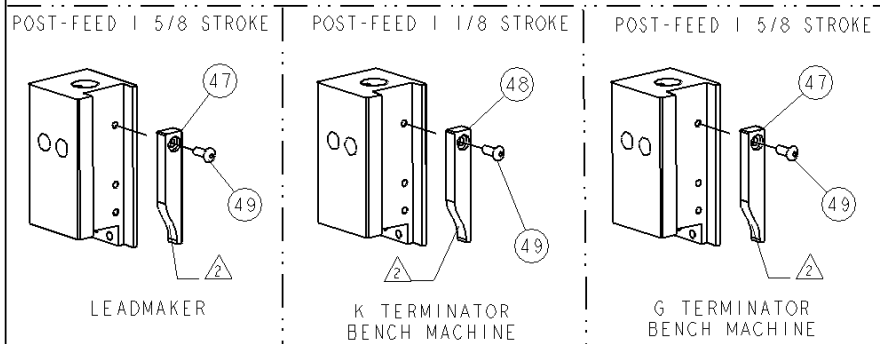


TERMINAL NAME: .250 FASTON				
41449	-	AMP TERMINAL - AMP CRIMP SPECS		
41450	-			
41679	-	REF SETTING	CRIMP HEIGHT	WIRE SIZE
42437	-	A5	.102±.002(2.59±0.05mm)	(1)12AWG+(1)18AWG
61095	-	A9	.100±.002(2.54±0.05mm)	(2) 14 AWG
61324	-	B9	.095±.002(2.41±0.05mm)	12 AWG
63365	-	E1	.083±.002(2.11±0.05mm)	14 AWG
63412	-	CRIMP		
63435	-	SIZE		
-	-	WIRE	.130 [3.30mm]	F 12-14
-	-	INSUL	.210 [5.33mm]	O -
WIRE STRIP LENGTH		TERM APPL SPEC	FEED	APPL INSTRUCTIONS
.210 - .225		114-2036	.845	408-8039
				SET UP GAGE
				458638-1

REVISIONS				
LOC	PIST	DESCRIPTION	DATE	APPV
A	66	PRODUCT RELEASE	11APR112006	CMR
B		ECR-07-016581	13JUL2007	LG
B1		ECR-10-007407	12APR2010	C.C



△	REF	-	455749-1	GUARD WINDOW	79
△	-	REF	679532-1	INSERT, GUARD	78
-	1	1	217238-1	GENERAL INSTRUCTION PKG	72
-	1	1	4088039	EF APPL INST 408-8039	71
-	1	1	461264-1	PLATE, IDENTIFICATION	67
-	2	2	21017-2	SCREW, DRIVE	66
-	1	1	21009-2	SCR, SET, SELF LOCKING 1/4-20 X .250	63
-	1	1	22733-8	SCR, BHSC, SELF-LOCKING, 8-32 X .375	60
-	1	1	2-21000-8	SCR, SKT HD CAP 8-32 X .625	58
-	3	3	2-21000-5	SCR, SKT HD CAP 8-32 X .250	57
-	2	2	2-21000-6	SCR, SKT HD CAP 8-32 X .375	56
-	2	2	21018-4	NUT, HEX, REG 4-40	54
-	2	2	21022-2	NUT, LOCK, HEX, TORQUE, 8-32	53
-	2	2	2-21006-6	SCR, SET, CUP POINT 4-40 X .625	52
-	1	1	1-21002-7	SCR, BTN SKT HD CAP 6-32 X .375	49
-	1	-	690501-3	CAM, POST FEED, 1 1/8	48
-	-	1	690501-4	CAM, POST-FEED 1 5/8	47
-	1	1	458980	SUB ASSY, APPLICATOR FRAME	46
-	1	1	690191-1	PLUG,NYLON	45
-	1	1	1-455674-3	RAM	44
-	1	1	690125-1	SHIM SUB-ASSY	43
-	1	1	7-21002-9	SCR, BTN SKT HD CAP 5/16-24 X 1.00	41
-	1	1	469367-7	SHIM	39
-	1	1	879103-2	FINE ADJUST HEAD SUBASSY	37
-	6	6	21024-4	WASHER, SPRG LOCK, REG NO 8	32
-	2	2	2-21002-9	SCR, BTN SKT HD CAP 10-32 X .750	31
-	2	2	2-21002-2	SCR, BTN SKT HD CAP 8-32 X .500	29
-	1	1	3-690451-2	SPACER, STRIPPER	28
-	1	1	240639-1	STRIPPER (MACHINING)	27
-	2	2	22354-8	STUD, THREADED	25
-	1	1	455678-1	PLATE, STRIP GUIDE	24
-	1	1	240825-2	PLATE, STRIP HOLD DOWN	23
-	2	2	4-22281-1	SPRING, DRAG	22
-	1	1	454177-1	DRAG	20
-	2	2	454204-4	GUIDE, LOWER STRIP	18
-	4	4	3-21002-3	SCR, BTN SKT HD CAP 1/4-20 X .500	17
-	1	1	1-690481-8	SPACER, HOLD DOWN	13
-	1	1	23846-1	SPRING, DIE	12
-	1	1	240644-1	PLATE, REAR SHEAR	11
-	1	1	1-690495-5	PLATE, FRONT SHEAR	9
△	1	1	3-238005-8	ANVIL, COMBINATION	8
△	1	1	690474-8	BLADE, SLUG	7
-	1	1	2-455892-4	HOLD DOWN, TERMINAL	6
-	1	1	3-240641-0	SPACER	5
-	1	1	238009-1	BLOCK, FL CRIMPER SPACER	4
△	1	1	2-456135-9	CRIMPER, INSULATION O PREMIUM	3
-	1	1	1-455888-5	SPACER, CRIMPER	2
△	1	1	456410-4	CRIMPER, WIRE PREMIUM	1



THIS DRAWING IS THE PROPERTY OF TYCO ELECTRONICS LTD. IT IS TO BE USED FOR THE MANUFACTURE OF TYCO ELECTRONICS LTD. PRODUCTS ONLY. IT IS NOT TO BE REPRODUCED OR COPIED IN ANY FORM OR BY ANY MEANS, WITHOUT THE WRITTEN PERMISSION OF TYCO ELECTRONICS LTD. IT IS TO BE DESTROYED OR RECYCLED WHEN NO LONGER REQUIRED FOR THE MANUFACTURE OF TYCO ELECTRONICS LTD. PRODUCTS.				DWG NO. 21MARCH2006 G. REICHELTER C. LEBLIN		tyco Electronics		Tyco Electronics Harrisburg, PA 17105-3608	
DIMENSIONS IN INCHES		TOLERANCES UNLESS OTHERWISE SPECIFIED		DWG NO. 21MARCH2006 T. BECHTOLD		NAME		END FEED HORN APPLICATOR FINE ADJUST	

Mouser Electronics

Authorized Distributor

Click to View Pricing, Inventory, Delivery & Lifecycle Information:

[TE Connectivity:](#)

[1855057-2](#)