



MXR7305VF-B Prototyping Board

MXR7305VF-B

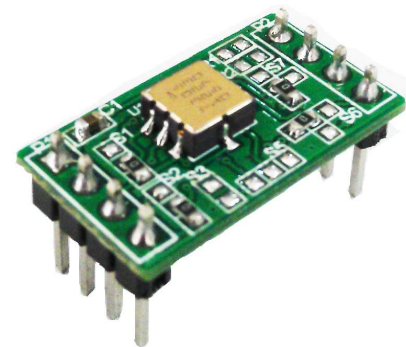
GENERAL DESCRIPTION

The MXR7305VF-B provides a convenient and easy way to evaluate and prototype with the MXR7305VF dual axes accelerometer. The accelerometer and passive components are SMT mounted on the board. Each pin of the MXR7305VF SMT device is brought out to standard 0.10 inch on center connections on the sides of the prototyping board. Wires can either be soldered directly to the prototyping board or the DIP pins can be used with widely available breadboard kits.

For complete performance specifications of the MXR7305VF refer to the MXR7305VF datasheet.

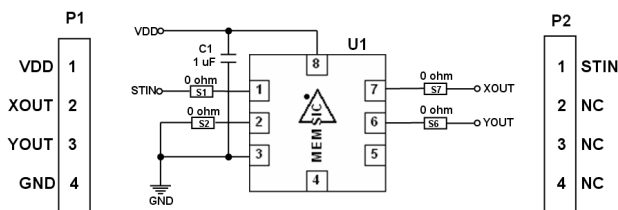
PIN DESCRIPTION

Pin	Name	Description
P1-1	VDD	Supply Voltage 4.5 to 5.25 V
P1-2	XOUT	X-Channel Ratiometric Output
P1-3	YOUT	Y-Channel Ratiometric Output
P1-4	GND	Ground
P2-1	STIN	Self -Test Input
P2-2	NC	No Connect
P2-3	NC	No Connect
P2-4	NC	No Connect



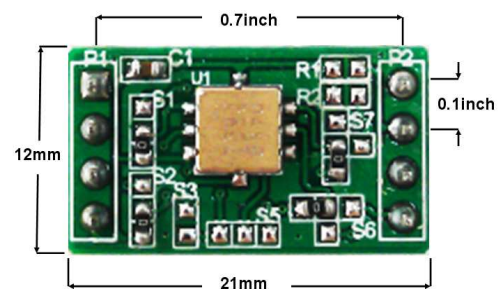
MXR7305VF-B

SCHEMATIC OF THE MXR7305VF-B



MXR7305VF-B

PCB CONNECTION DIMENSIONS



MXR7305VF-B

Information furnished by MEMSIC is believed to be accurate and reliable. However, no responsibility is assumed by MEMSIC for its use, nor for any infringements of patents or other rights of third parties, which may result from its use. No license is granted by implication or otherwise under any patent or patent rights of MEMSIC.

©MEMSIC, Inc.
One Technology Drive, Suite 325, Andover, MA, 01810, USA
Tel: +1 978 738 0900 Fax: +1 978 738 0196
www.memsic.com

Mouser Electronics

Authorized Distributor

Click to View Pricing, Inventory, Delivery & Lifecycle Information:

[MEMSIC:](#)

[MXR7305VF-B](#)