

1

2

3

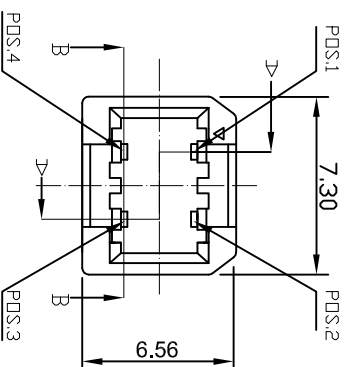
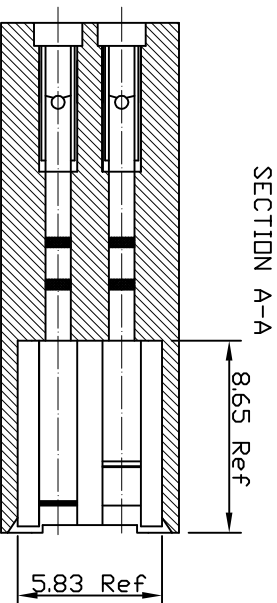
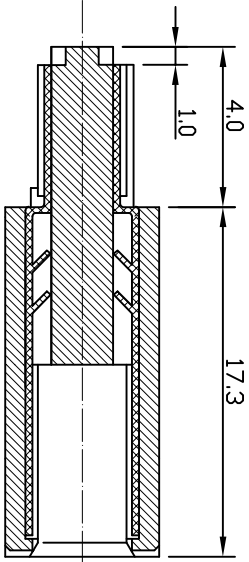
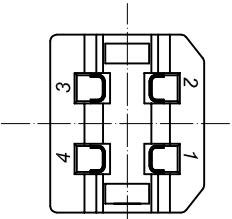
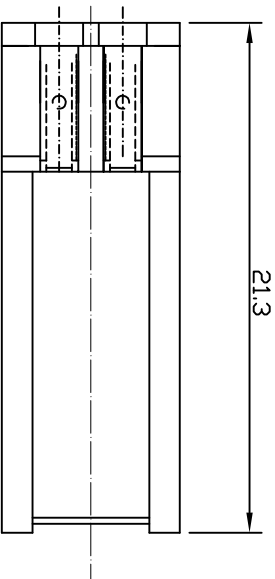
4

5

6

7

⑤ USB2.0 COMPLIANT



NOTE:
 1. MATERIALS:
 INSULATION: PBT 30%GLASS FILLED UL94V-0
 COLOR: WHITE
 COLOR: WHITE
 CONTACT: COPPER ALLOY PREPLATEIVE 5µ" GOLD PLATED

SECTION B-B

SECTION A-A

Scale	1:1
TOLERANCE	
.XX	±0.10
.X	±0.20
X.	±0.50
XX.	±1
DIM	TOL
Angle	TOL

⑥	Update contact plated information	10.02.2013	Ray		Date	Name
⑦	Update	27.08.2013	Winnie	Drawn	20.10.2004	Hellwig
④	Add assembly instructions	11.06.2012	Lucas	Approved	10.02.2014	Winnie
③	Add application cable OD.	13.03.2012	Lucas			
②	Update	14.07.2009	Rale			
①	Drawn	20.10.2004	Hellwig			
Id.	Modification					

Customer-No.

ASSMANN WSW-No. A-USBPB-N

Drawing-No.

ASS 1518C CO rev06

Replace

Sheet 1 / 4

RoHS compliant

1

2

3

4

5

6

7

A B C D E F G H

1

2

3

4

5

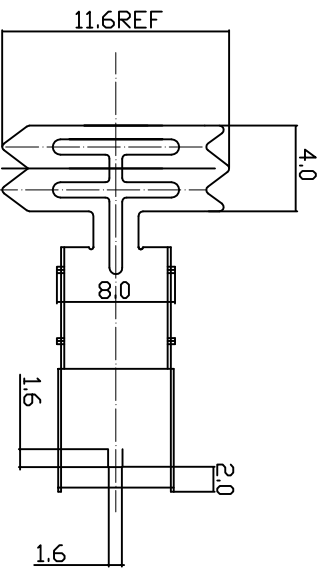
6

7

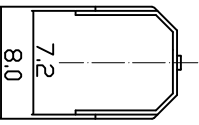
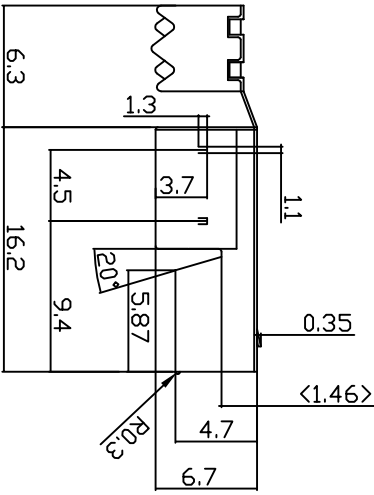
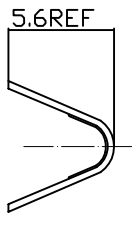
A

A

NOTE:
 1.0.MATERIALS:
 1.1.COLD ROLL STEEL, t=0.35mm
 2.0.FINISHES:
 2.1.5.0um Min, BRIGHT TIN/LEAD(9:1) OVER 5.0um Min, COPPER
 2.2.3.0um-5.0um NICKEL OVER 5.0um Min, COPPER
 2.3.1.5u" Min, Au+80~150u" NICKEL +100u"Min, COPPER
 2.4.3.0um-5.0um NICKEL OVER 5.0um Min, COPPER(SPECIAL PLATED)
 © 3.0.APPLICATION CABLE SPEC:



UL CSA Type	AWG Signal wires Power wires	Jackel OD.	Cable length(max.)
UL GM	28AWG x 11P, 28AWG x 2Cores	4.2mm	0.81m
UL FT4	28AWG x 11P, 26AWG x 2Cores	4.4mm	1.31m
	28AWG x 11P, 24AWG x 2Cores	4.7mm	2.08m
	28AWG x 11P, 22AWG x 2Cores	5.0mm	3.33m
	28AWG x 11P, 20AWG x 2Cores	5.0mm	5.00m



G

G

H

H

F

F

E

E

D

D

C

C

B

B

RoHS compliant

Scale	1:1	Update contact plated Information		10.02.2013	Ray	Customer-No.	
TOLERANCE		⑥	Update	27.08.2013	Winnie	ASSMANN WSW-No.	A-USBPB-N
.XX	±0.10	⑦	Add assembly instructions	11.06.2012	Lucas	Drawing-No.	ASS 1518C CO
.X	±0.20	④	Add application cable OD.	13.03.2012	Lucas	Date	20.10.2004
X.	±0.50	③	Update	14.07.2009	Rate	Name	Hellwig
XX.	±1	②	Drawn	20.10.2004	Hellwig	Replace	Sheet 2 / 4
DIM	TOL	①	Modification				
Angle	TOL	Id.					



1

2

3

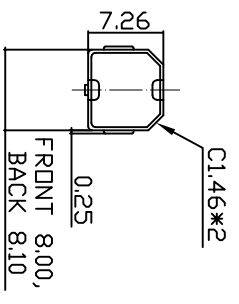
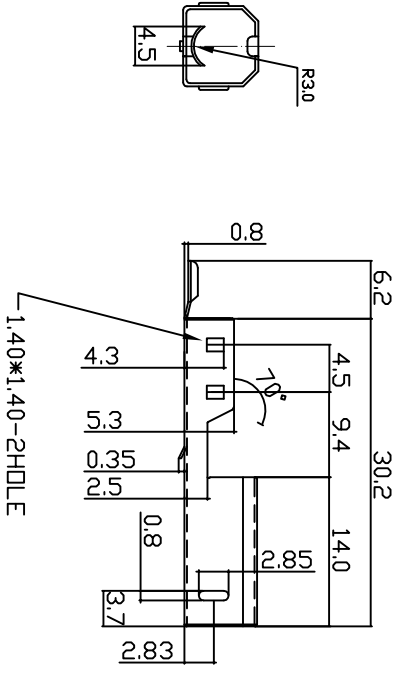
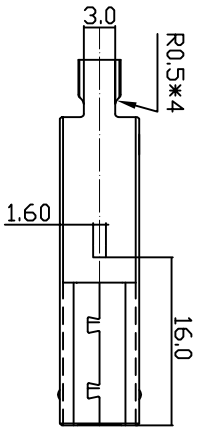
4

5

6

7

1	2	3	4	5	6	7	A
1	2	3	4	5	6	7	A
1	2	3	4	5	6	7	B
1	2	3	4	5	6	7	C
1	2	3	4	5	6	7	D
1	2	3	4	5	6	7	E
1	2	3	4	5	6	7	F
1	2	3	4	5	6	7	G
1	2	3	4	5	6	7	H



NOTE:
 1.0.MATERIALS:
 1.1.COLD ROLL STEEL, t=0.35mm
 2.0.FINISHES:
 2.1.5.0um Min.BRIGHT TIN/LEAD(9:1) OVER 5.0um Min.COPPER
 2.2.3.0um-5.0um NICKEL OVER 5.0um Min.COPPER
 2.3.1.5u" Min.Au+80~150U".NICKEL+100U"Min.COPPER
 2.4.3.0um-5.0um NICKEL OVER 5.0um Min.COPPER(SPECIAL PLATED)
 3.0.OTHER:

Scale	1:1	⑥	Update contact plated information	10.02.2013	Ray		Date	Name	Customer-No.
TOLERANCE		⑤	Update	27.08.2013	Winnie	Drawn	20.10.2004	Hellwig	ASSMANN WSW-No.
.XX	±0.10	④	Add assembly instructions	11.06.2012	Lucas	Approved	10.02.2014	Winnie	A-USBPB-N
.X	±0.20	③	Add application cable OD.	13.03.2012	Lucas				Drawing-No.
X.	±0.50	②	Update	14.07.2009	Rale				ASS 1518C CO
XX.	±1	①	Drawn	20.10.2004	Hellwig				Replace
DIM	TOL								Sheet
Angle	TOL								3 / 4

RoHS compliant



A	1	2	3	4	5	6	7																																																											
B																																																																		
C								<p>Notes:</p> <p>Rating: Voltage: 30VAC (R.M.S) Current: 1.5 AMPERE MINIMUM PER CONTACT AT 30°C T-RISE TEMPERATURE: -55°C TO +85°C UNLESS LIMITED BY CABLE OR OVERMOLD (-40°C TO +60°C STORAGE: 0°C TO +40 °C (OPERATING) ELECTRIC RESISTANCE: 30 MILLIOHMS MAXIMUM INITIAL INSULATION RESISTANCE: 1000 MEGOHMS MINIMUM DIELECTRIC WITHSTANDING VOLTAGE: 500VAC AT SEA LEVEL CAPACITANCE: 2 PICOFARADS MAXIMUM AT 1KHZ MODIFICATION SEAM DIRECTION CIRCUMGYRATE: 180 DEGREE</p>																																																										
D	<table border="1"> <tr> <td>Scale</td> <td>1:1</td> </tr> <tr> <td rowspan="3">TOLERANCE</td> <td>XX ±0.05</td> </tr> <tr> <td>X ±0.10</td> </tr> <tr> <td>.X ±0.15</td> </tr> <tr> <td>DIM</td> <td>TOL</td> </tr> <tr> <td>X°</td> <td>±3°</td> </tr> <tr> <td>X°</td> <td>±1.0°</td> </tr> <tr> <td>Angle</td> <td>TOL</td> </tr> </table>	Scale	1:1	TOLERANCE	XX ±0.05	X ±0.10	.X ±0.15	DIM	TOL	X°	±3°	X°	±1.0°	Angle	TOL	<table border="1"> <tr> <td>⑥</td> <td>Update contact plated Information</td> <td>10.02.2013</td> <td>Ray</td> <td></td> <td></td> <td></td> <td></td> </tr> <tr> <td>⑤</td> <td>Update</td> <td>27.08.2013</td> <td>Winnie</td> <td>Drawn</td> <td>20.10.2004</td> <td>Helwig</td> <td></td> </tr> <tr> <td>④</td> <td>Add assembly instructions</td> <td>11.06.2012</td> <td>Lucas</td> <td>Approved</td> <td>10.02.2014</td> <td>Winnie</td> <td></td> </tr> <tr> <td>③</td> <td>Add application cable OD.</td> <td>13.03.2012</td> <td>Lucas</td> <td></td> <td></td> <td></td> <td></td> </tr> <tr> <td>②</td> <td>Update</td> <td>14.07.2009</td> <td>Rale</td> <td></td> <td></td> <td></td> <td></td> </tr> <tr> <td>①</td> <td>Drawn</td> <td>20.10.2004</td> <td>Helwig</td> <td></td> <td></td> <td></td> <td></td> </tr> </table>	⑥	Update contact plated Information	10.02.2013	Ray					⑤	Update	27.08.2013	Winnie	Drawn	20.10.2004	Helwig		④	Add assembly instructions	11.06.2012	Lucas	Approved	10.02.2014	Winnie		③	Add application cable OD.	13.03.2012	Lucas					②	Update	14.07.2009	Rale					①	Drawn	20.10.2004	Helwig					<p>Customer-No.</p> <p>ASSMANN WSW-No. A-USBPB-N</p> <p>Drawing-No. ASS 1518C CO</p> <p>Replace rev06</p> <p>Sheet 4 / 4</p>	<p>RoHS compliant</p>
Scale	1:1																																																																	
TOLERANCE	XX ±0.05																																																																	
	X ±0.10																																																																	
	.X ±0.15																																																																	
DIM	TOL																																																																	
X°	±3°																																																																	
X°	±1.0°																																																																	
Angle	TOL																																																																	
⑥	Update contact plated Information	10.02.2013	Ray																																																															
⑤	Update	27.08.2013	Winnie	Drawn	20.10.2004	Helwig																																																												
④	Add assembly instructions	11.06.2012	Lucas	Approved	10.02.2014	Winnie																																																												
③	Add application cable OD.	13.03.2012	Lucas																																																															
②	Update	14.07.2009	Rale																																																															
①	Drawn	20.10.2004	Helwig																																																															
G	1	H	2	3	4	5	6																																																											