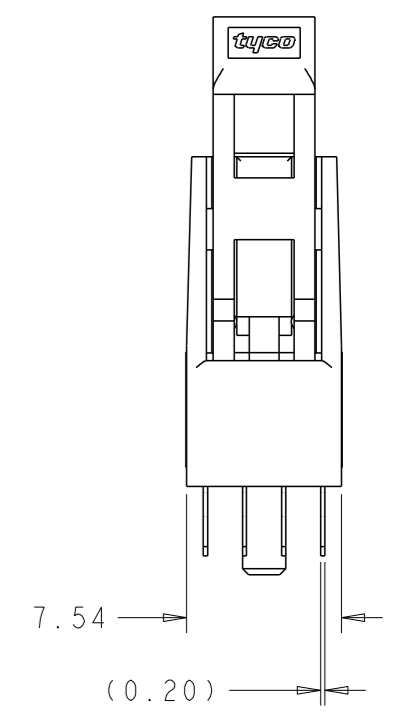
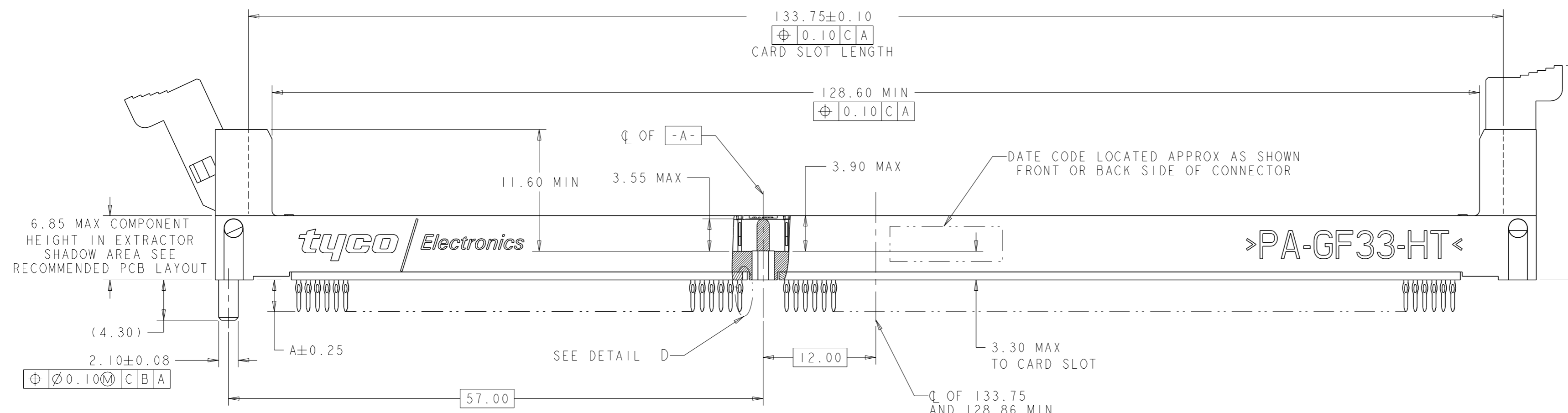
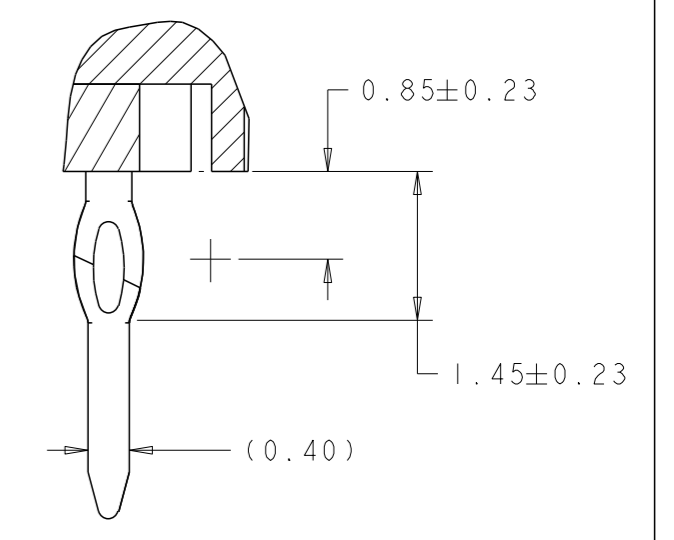
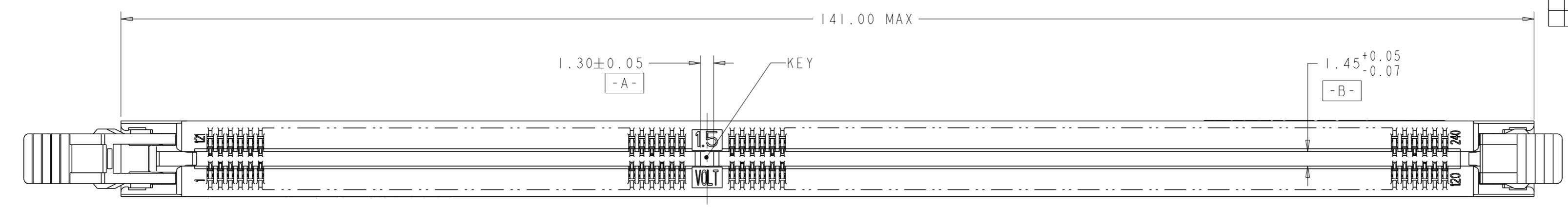
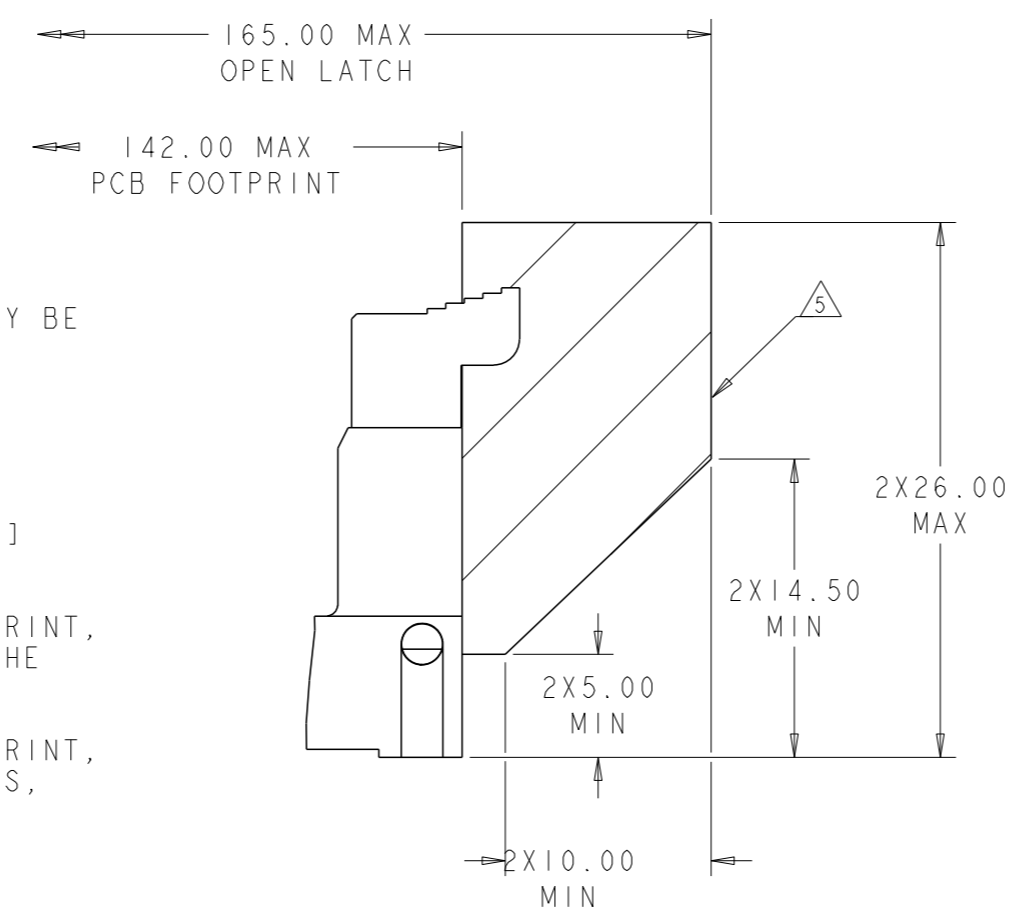


THIS DRAWING IS UNPUBLISHED. RELEASED FOR PUBLICATION 20
 © COPYRIGHT 20 BY - ALL RIGHTS RESERVED.

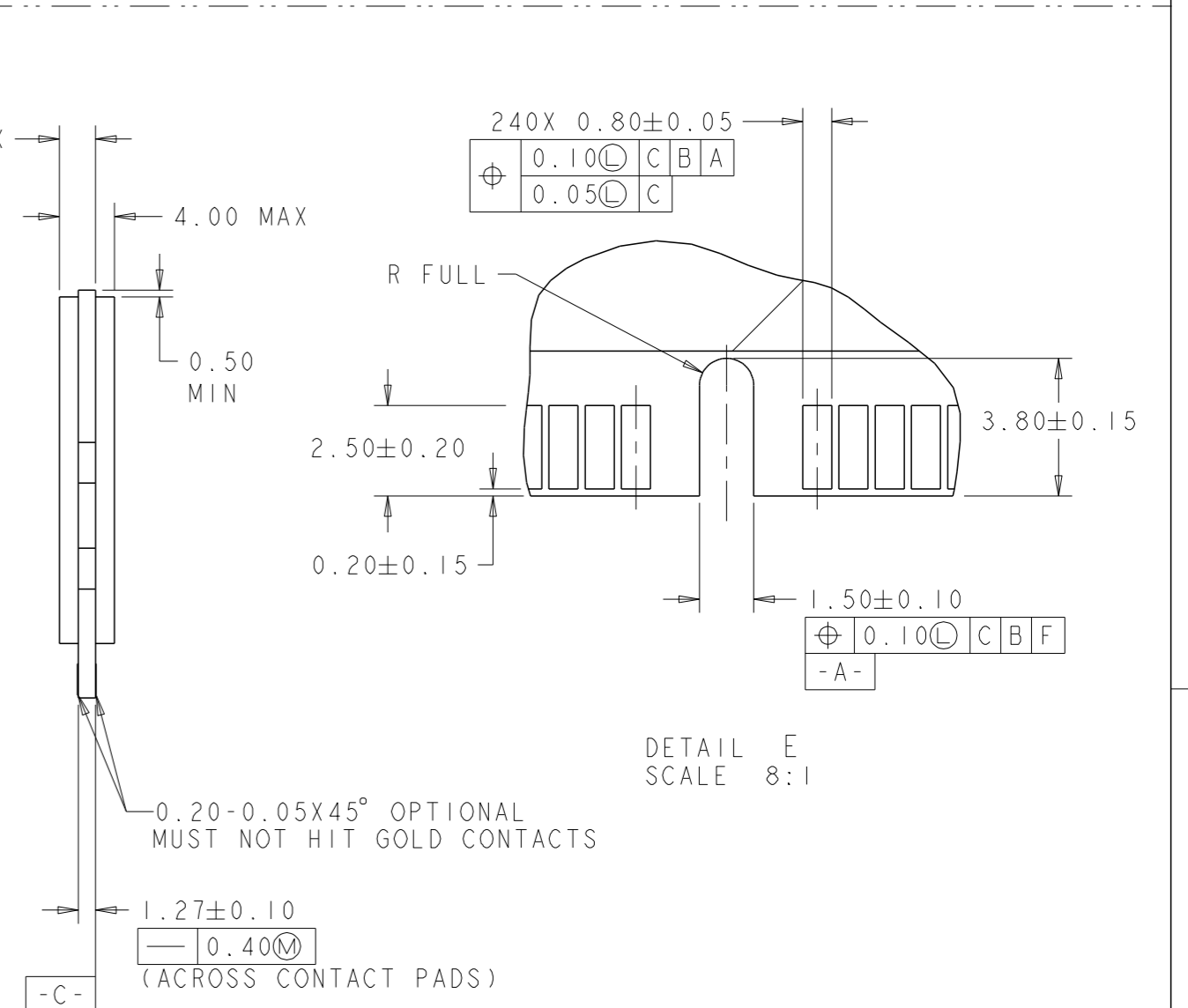
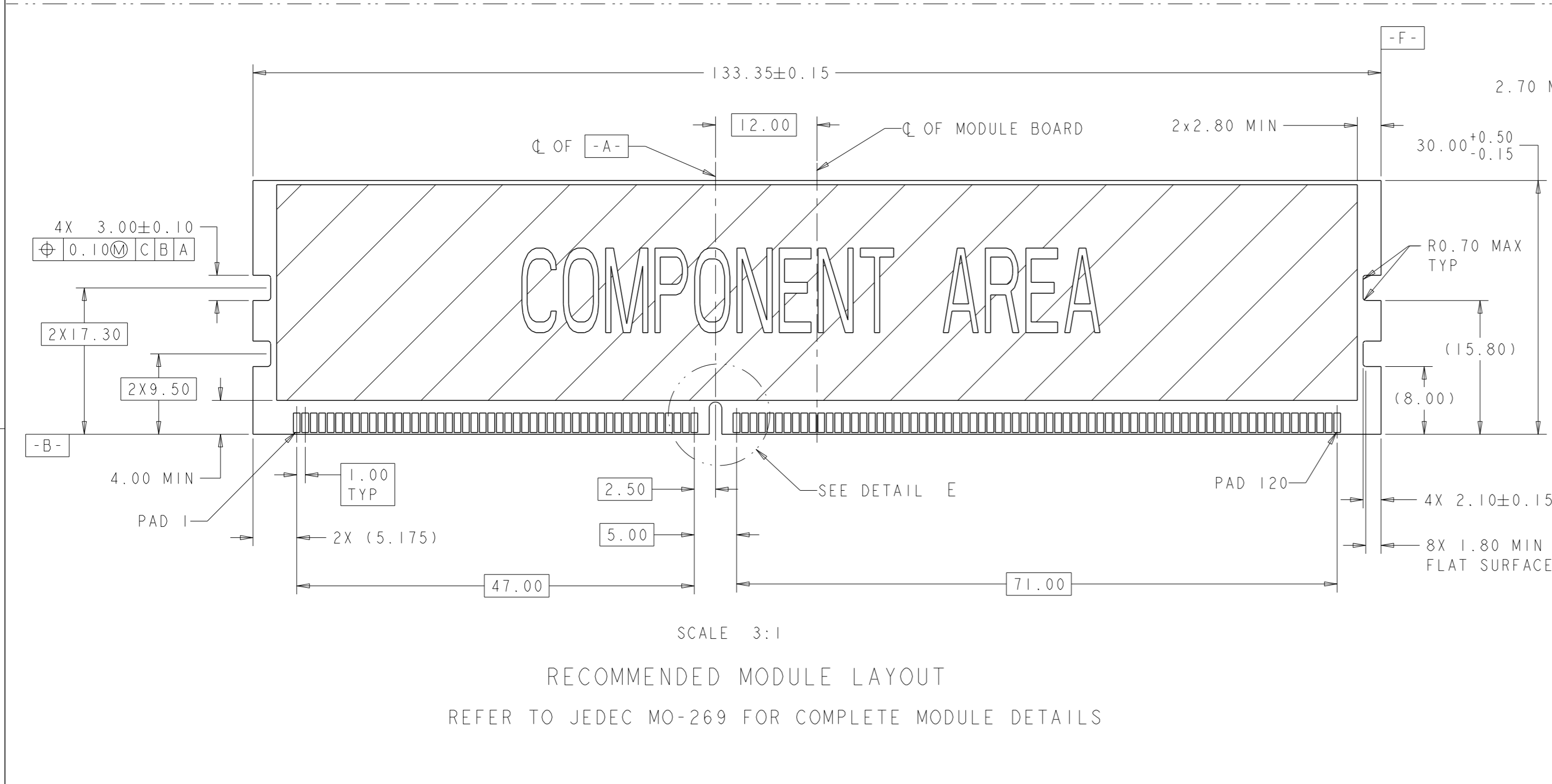
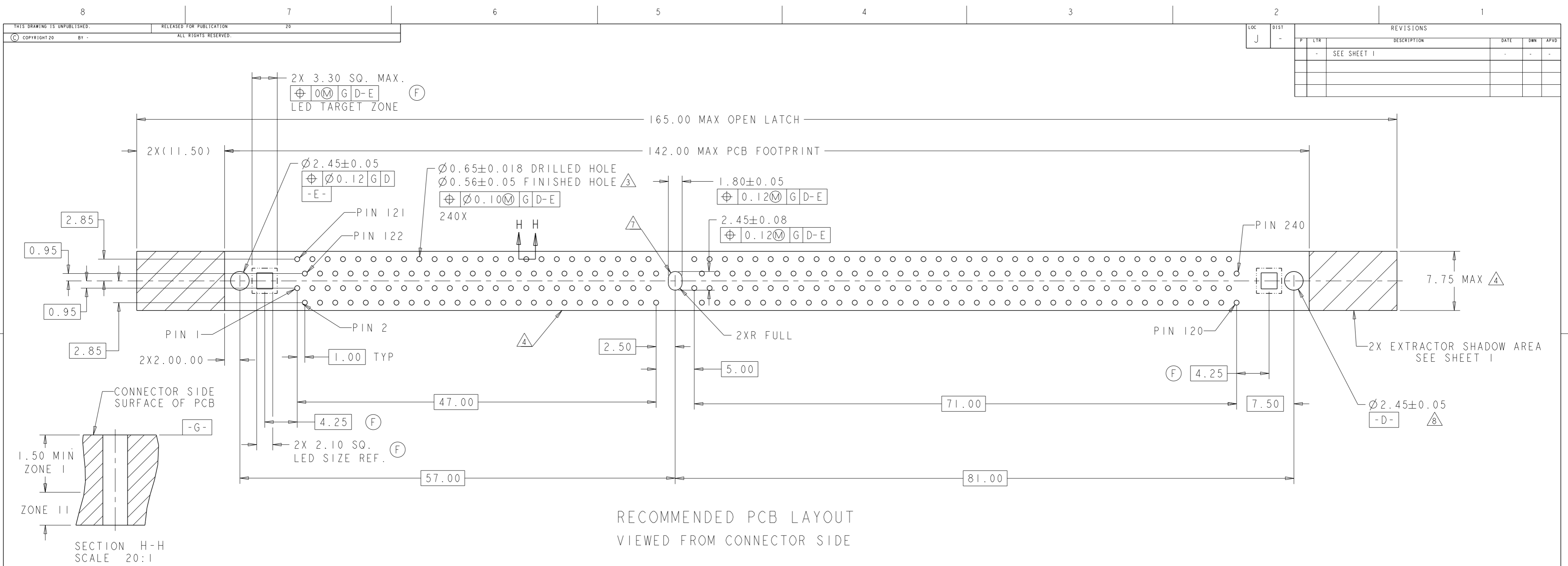
REVISONS		DATE	BY	APPD
P	LYR	DESCRIPTION	DATE	BY
E	3	REVISED PER ECR-11-013889	7JUL2011	S.W C.W
F		REVISED PER ECR-11-018341	5SEP2011	S.W C.W



- 1 MATERIALS:
 HOUSING: HIGH TEMPERATURE, UL94 V-0
 EXTRACTOR: HIGH TEMPERATURE THERMOPLASTIC
 SUPPORT PLATE: LCP, UL94 V-0
- 2 INTERFACE FINISH:
 (1) 0.00076 MIN THK GOLD OVER 0.00127 MIN THK NICKEL
 (2) 0.00038 MIN THK GOLD OVER 0.00127 MIN THK NICKEL.
- 3 FINISHED HOLE SIZE 0.15 MAX ANNULAR RING.
 COPPER PLATING: 0.025-0.050
 TIN-LEAD PLATING: 0.0038-0.0124
 FOR PTH TIN-LEAD PLATING ONLY, FINISHED HOLE TOLERANCE MAY BE +0.05/-0.058 IN ZONE 1, AND ±0.076 IN ZONE II
- 4 KEEP OUT ZONE.
- 5 KEEP OUT AREA RESERVED FOR SOCKET EXTRACTORS, BOTH ENDS.
- 6 APPROXIMATE SEATING FORCE WILL BE 3781-5338N [850-1200 lb] FOR THE 240 POSITION SOCKET ASSEMBLY.
- 7 HOLE INDICATED IS PART OF THE STANDARD 240 POSITION FOOTPRINT, REQUIRED FOR THE SOLDERTAIL VERSION, MAY BE OMITTED FOR THE PRESS FIT VERSION.
- 8 HOLE INDICATED IS PART OF THE STANDARD 240 POSITION FOOTPRINT, REQUIRED FOR THE SOLDERTAIL AND 2 POSTS PRESS FIT VERSIONS, MAY BE OMITTED FOR 1 POST PRESS FIT VERSION
- 9 COMPLIANT PIN FINISH: 0.00254 MIN THICK MATTE TIN OVER 0.00127 MIN THICK NICKEL.
- 10 COMPLIANT PIN FINISH: 0.00254 MIN THICK TIN-LEAD OVER 0.00127 MIN THICK NICKEL.
- 11. FOR HANDLING PROCESS AT CUSTOMER'S LINE, PAY ATTENTION NOT TO TOUCH EVERY CONTACT TIPS.
- 12 LOWER RESISTANCE TYPE



DIM A	COMPLIANT PIN	INTERFACE FINISH	SUPPORT PLATE COLOT	EXTRACTOR COLOR	HOUSING COLOR	DESCRIPTION	PART NUMBER
2.40	9	(2)	BLACK	AMBER	BLACK	1 POST	3-2013266-4
			BLACK	NATURAL	BLACK		3-2013266-3
3.30	9	(1)	BLACK	AMBER	BLACK	1 POST	3-2013266-2
			BLACK	NATURAL	BLACK		3-2013266-1
2.40	9	(2)	BLACK	NATURAL	BLACK	1 POST	2-2013266-4
			BLACK	NATURAL	BLACK		2-2013266-3
3.38	10	(1)	BLACK	AMBER	BLACK	1 POST	2-2013266-2
			NATURAL	NATURAL	NATURAL		2-2013266-1
2.40	9	(2)	BLACK	NATURAL	BLACK	1 POST	1-2013266-7
			BLACK	BLACK	BLACK		1-2013266-6
3.38	10	(1)	NATURAL	NATURAL	NATURAL	1 POST	1-2013266-5
			BLUE	NATURAL	BLUE		1-2013266-4
2.40	9	(2)	NATURAL	NATURAL	NATURAL	1 POST	1-2013266-3
			BLACK	NATURAL	BLACK		1-2013266-2
3.38	10	(1)	BLACK	BLACK	BLACK	1 POST	2013266-7
			NATURAL	NATURAL	NATURAL		2013266-6
2.40	9	(2)	BLACK	NATURAL	BLACK	1 POST	2013266-5
			NATURAL	NATURAL	NATURAL		2013266-4
3.38	10	(1)	BLACK	NATURAL	BLACK	1 POST	2013266-3
			BLACK	NATURAL	BLACK		2013266-2
2.40	9	(2)	BLACK	NATURAL	BLACK	1 POST	2013266-1
			BLACK	NATURAL	BLACK		2013266-1

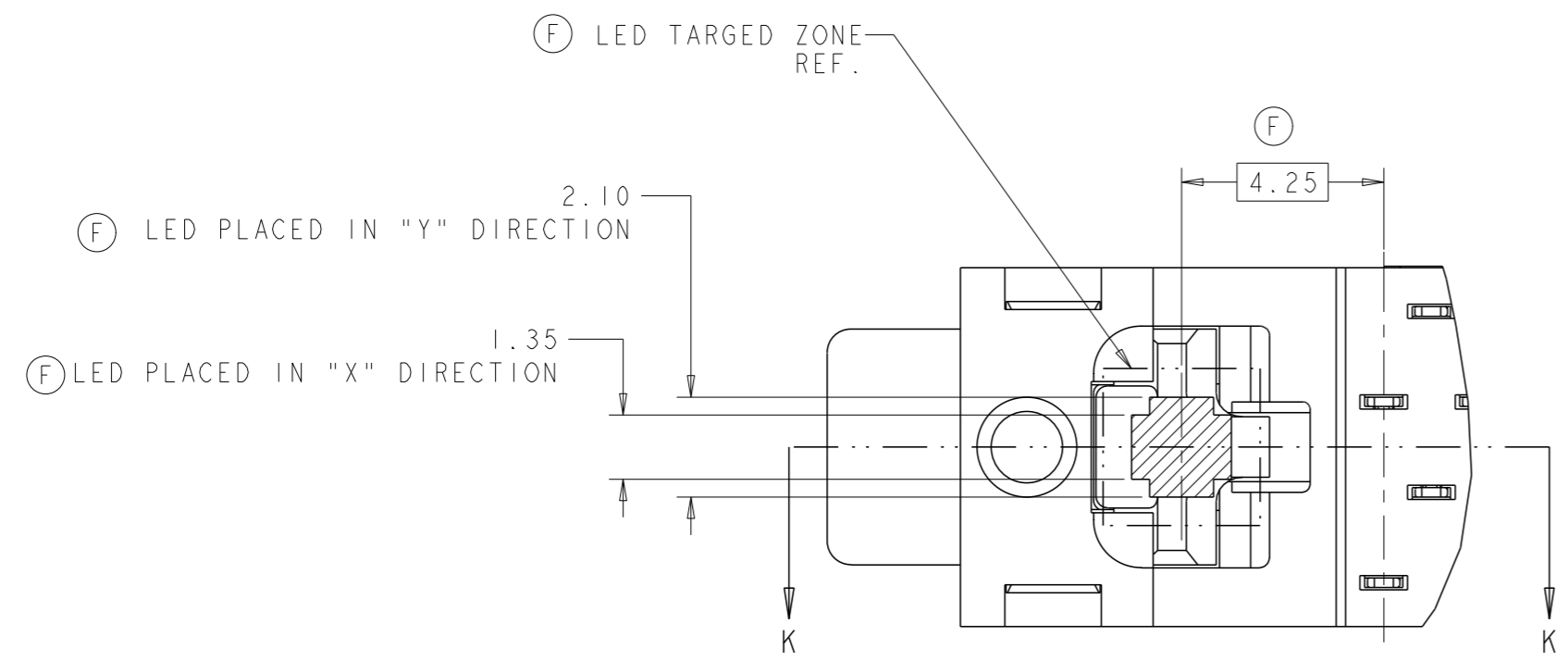


LOC		DIST		REVISIONS			
P	LYR	DESCRIPTION	DATE	DNW	APVD		
-	-	SEE SHEET 1	-	-	-	-	-

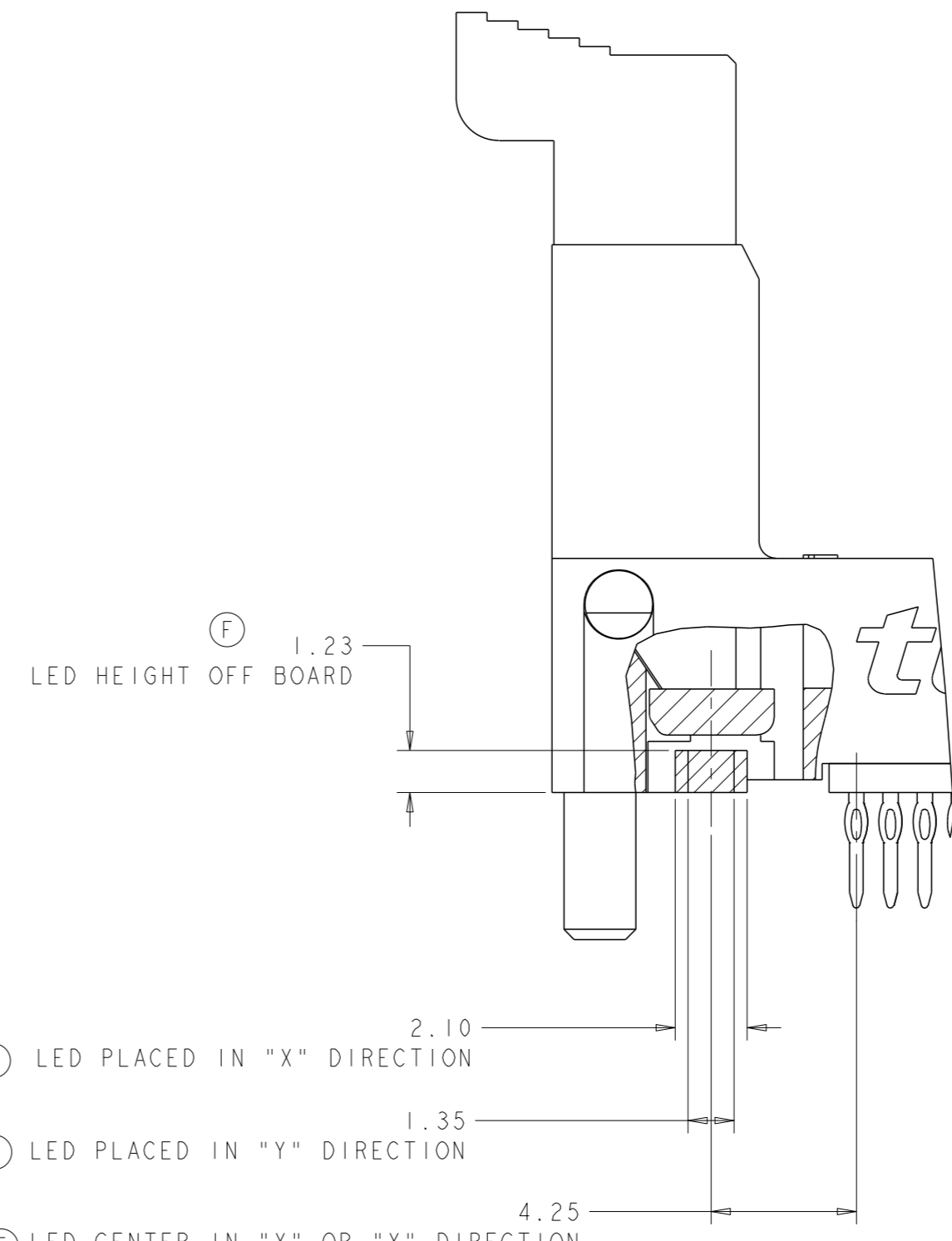
THIS DRAWING IS A CONTROLLED DOCUMENT.		DNW SANDERS, YAN 18-May-2007	TE Connectivity
DIMENSIONS: mm		CHK T. KAWAMAE 18-May-2007	
TOLERANCES UNLESS OTHERWISE SPECIFIED:		APVD STEVEN YAO 18-May-2007	NAME: SOCKET ASSEMBLY, VERTICAL DDR3 DIMM, PRESS FIT, 240 POSITIONS SIZE: A100779 ©=2013266 SCALE: 1:1 SHEET 2 OF 3 REV F
0 PLC ±. 1 PLC ±0.5 2 PLC ±0.13 3 PLC ±0.013 4 PLC ±0.001 ANGLES ±.		PRODUCT SPEC	
MATERIAL:		WEIGHT:	RESTRICTED TO
FINISH:		CUSTOMER DRAWING	

LOC	DIST	REV	DATE	BY	APPV
J	-	-	-	-	-

REVISIONS					
P	LYR	DESCRIPTION	DATE	BY	APPV
-	-	SEE SHEET 1	-	-	-



PARTIAL BOTTOM VIEW
SCALE 10:1



SECTION K-K
SCALE 8:1

DIM A	COMPLIANT PIN	INTERFACE FINISH	SUPPORT PLATE COLOT	EXTRACTOR COLOR	HOUSING COLOR	DESCRIPTION	PART NUMBER
E3 A2 2.40	9	(1)	BLACK	NATURAL	BLACK	1 POST	3-2013266-8
			NATURAL	NATURAL	NATURAL		3-2013266-7
			BLACK	AMBER	BLACK		3-2013266-6
			BLUE	BLACK	BLUE		3-2013266-5
E3 A2 3.30	9	(1)	BLACK	BLACK	BLACK	1 POST	2-2013266-9
			BLACK	NATURAL	BLACK		2-2013266-8
			NATURAL	NATURAL	NATURAL		2-2013266-7
			BLACK	AMBER	BLACK		2-2013266-6
			BLUE	BLACK	BLUE		2-2013266-5

THIS DRAWING IS A CONTROLLED DOCUMENT. DWN 18-May-2007 SANDERS, YAN
 CHG 18-May-2007 T. KAWAMAE
 APVD 18-May-2007 STEVEN YAO

DIMENSIONS: mm TOLERANCES UNLESS OTHERWISE SPECIFIED:
 0 PLC ±.5
 1 PLC ±0.5
 2 PLC ±0.13
 3 PLC ±0.013
 4 PLC ±0.001
 ANGLES °

MATERIAL: FINISH: WEIGHT: CUSTOMER DRAWING

STE TE Connectivity
 SOCKET ASSEMBLY, VERTICAL DDR3 DIMM, PRESS FIT, 240 POSITIONS

SIZE: A1 CAGE CODE: 00779 DRAWING NO: 2013266
 SCALE: 1:1 SHEET 3 OF 3 REV F

Mouser Electronics

Authorized Distributor

Click to View Pricing, Inventory, Delivery & Lifecycle Information:

[TE Connectivity:](#)

[1-2013266-2](#)