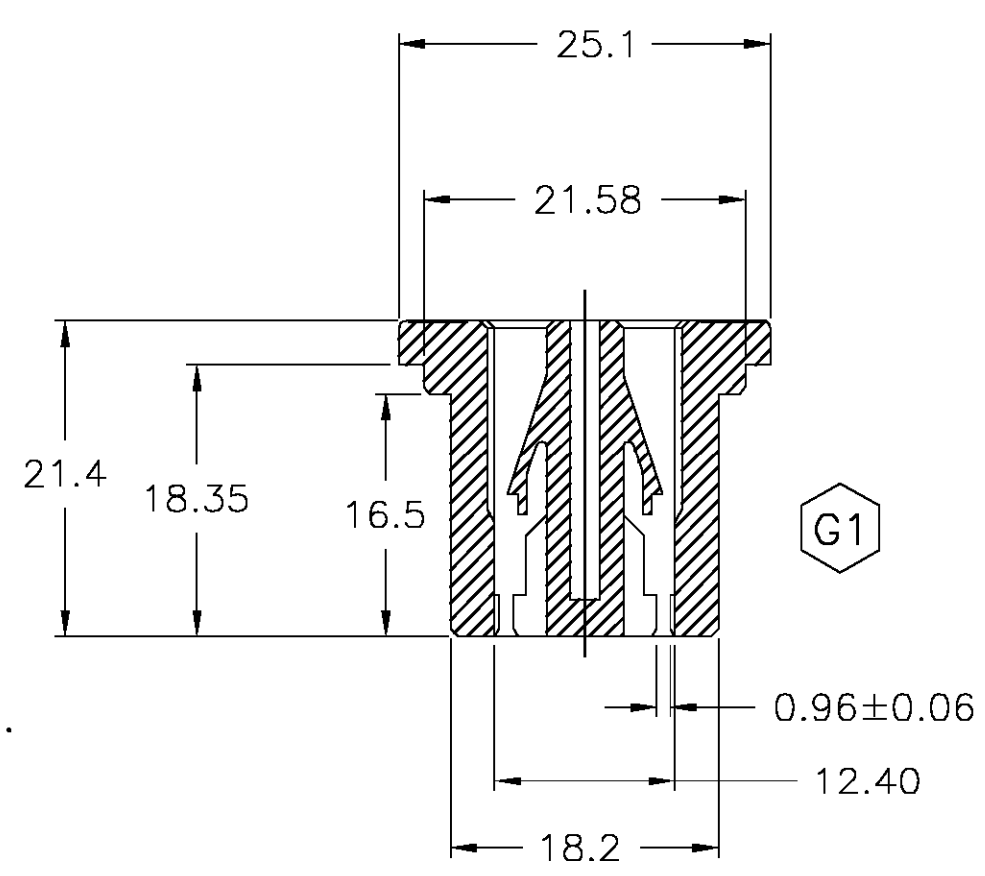
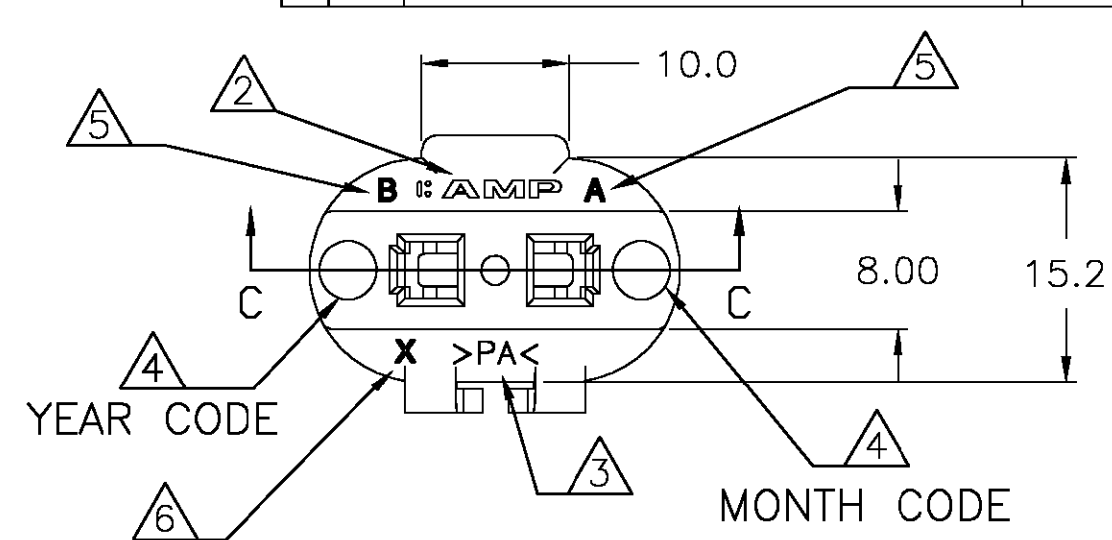
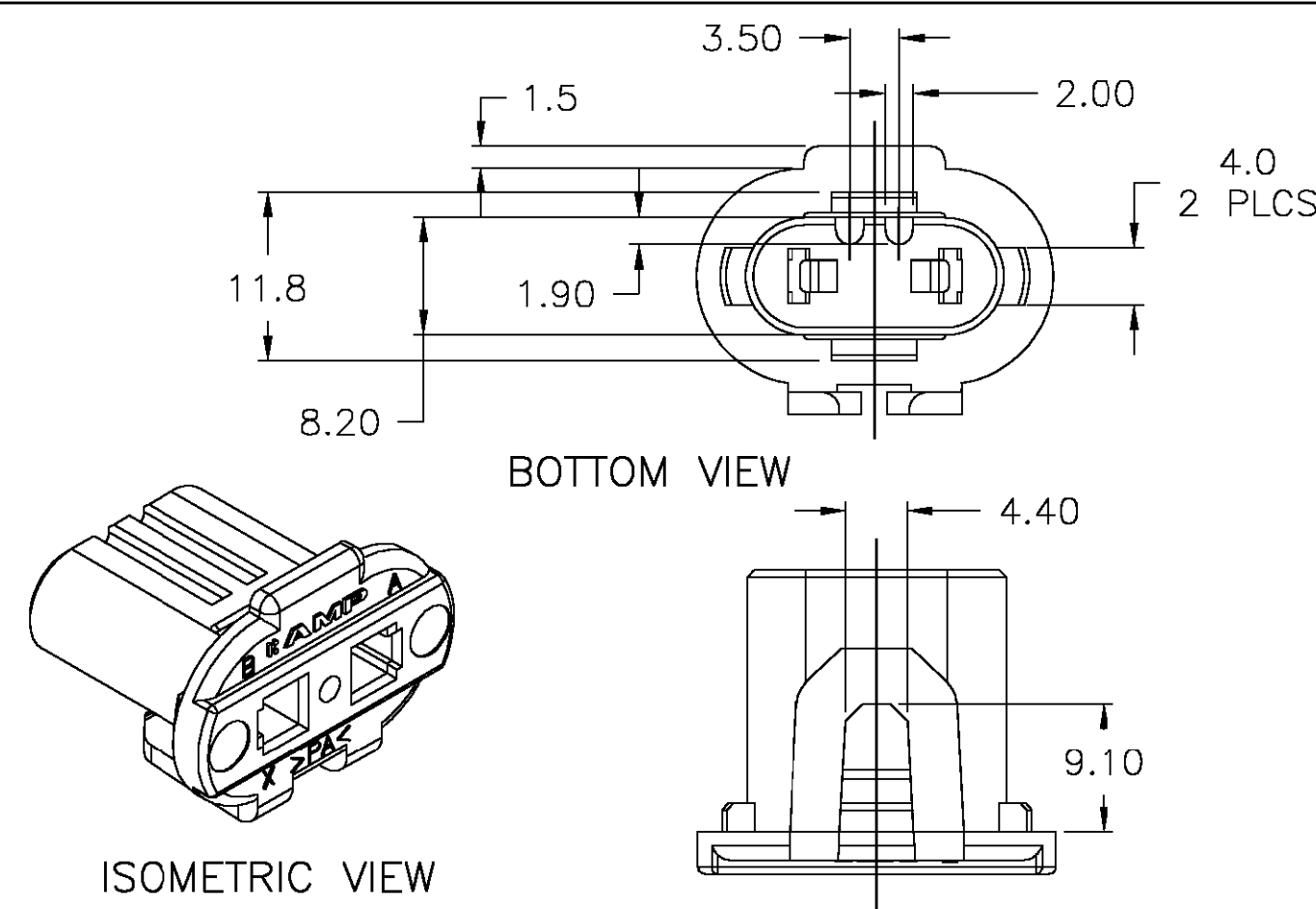


LOC	DIST	REVISIONS			
		P	LTR	DESCRIPTION	DATE
GV	1				
		G1		EC-LC30-0082-04	08OCT04



- 1 MATERIAL: ZYTEL 103HSL COLOR: BEIGE IN COMPLIANCE WITH GMW 3059.
- 2 AMP LOGO ORIENTED AND CENTRALLY LOCATED AS SHOWN.
- 3 POLYMER SYMBOL ORIENTED AND CENTRALLY LOCATED AS SHOWN.
- 4 YEAR AND MONTH CODES LOCATED APPROXIMATELY AS SHOWN.
- 5 WIRE CONNECTION LETTERS TO BE LOCATED ON THE SIDES SHOWN.
- 6 CAVITY ID LOCATED AS SHOWN.

- G1 7. FLASH ALLOWANCE PER TYCO SPEC 115-40-2.
- G1 8. FLASH IS ALLOWED INSIDE CIRCUIT HOLES PROVIDED INSERTION AND EXTRACTION FORCES ARE WITHIN SPECIFICATIONS.

109625-2
PART NO.

THIS DRAWING IS A CONTROLLED DOCUMENT.		DWN E. RODRIGUEZ 11SEP03	tyco Electronics		Tyco Electronics Corporation Markham, ON L3R 1E1	
DIMENSIONS: MM		CHK A. WEISZ 11SEP03	NAME		HOUSING, HI-BEAM	
TOLERANCES UNLESS OTHERWISE SPECIFIED:		APVD G. GOTO 24SEP04	SIZE		CAGE CODE	DRAWING NO
0 PLC ± -		PRODUCT SPEC	A3		00779	C=109625
1 PLC ± -		APPLICATION SPEC	RESTRICTED TO		-	
2 PLC ± -		WEIGHT	SCALE		2:1	
3 PLC ± -		CUSTOMER DRAWING	SHEET		1 OF 1	
4 PLC ± -			REV		G1	
ANGLES ± -						
FINISH						
MATERIAL						

Mouser Electronics

Authorized Distributor

Click to View Pricing, Inventory, Delivery & Lifecycle Information:

[TE Connectivity:](#)

[109625-1](#)