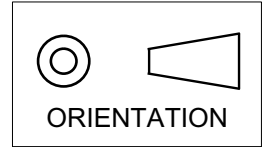
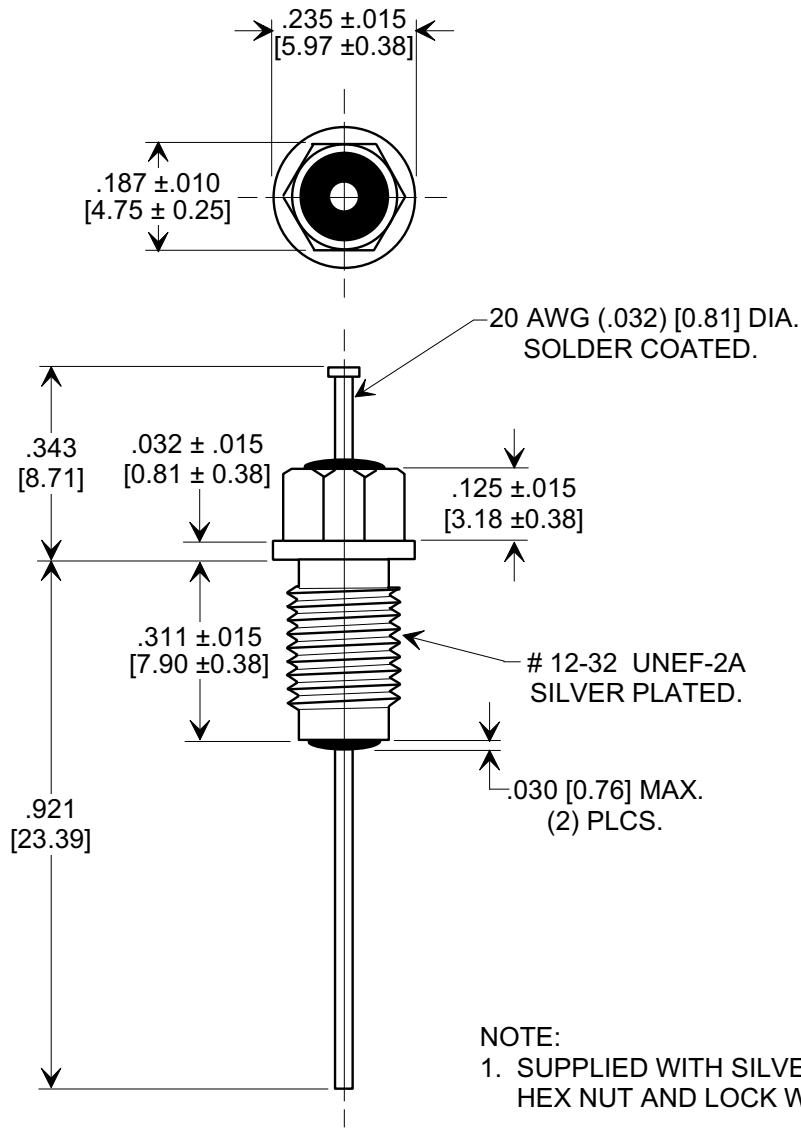
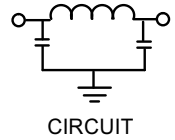


MARKETING SALES DRAWING
DIMENSIONS IN INCHES - DO NOT SCALE THIS DRAWING
DIMENSIONS IN METRIC - []

This drawing is the property of Tusonix, Inc., and may not be used, reproduced, published or disclosed to others without expressed authorization by Tusonix Inc.



Electrical Testing
per Tusonix standard
test plans and Mil-Std-202
Test Methods.



NOTE:
1. SUPPLIED WITH SILVER PLATED
HEX NUT AND LOCK WASHER.

| MIN. CAP. (pF) | WORKING VOLTAGE (WVdc) | CURRENT IDC | MINIMUM NO LOAD INSERTION LOSS (dB) AT 25°C PER MIL-STD -220 | | | |
|----------------|------------------------|-------------|--|---------|-------|--------|
| | 125 °C | | 50 MHz | 100 MHz | 1 GHz | 10 GHz |
| 1500 | 200 | 10 A | 32 | 45 | 70 | 70 |

| | | | | |
|---|-----------------------------------|--|--|-----------|
| REVISION RECORD Original Release C.O. ECO-666 | A | TOLERANCES unless otherwise specified 2 PLC. DECIMAL ± $\frac{\quad}{\quad}$ 3 PLC. DECIMAL ± $.031$ [0.79] | Title M15733/61-0006 BUSHING STYLE EMI FILTER | |
| | TUSONIX TUCSON, ARIZONA | | Drawn L.E. 04-15-09 Approved R.L. 04-15-09 | Scale X 3 |
| | A | | 4203-501 | |
| | 4203-501 | | | |

X-2015 Rev-0

Mouser Electronics

Authorized Distributor

Click to View Pricing, Inventory, Delivery & Lifecycle Information:

[Tusonix / CTS:](#)

[4203-501](#)