

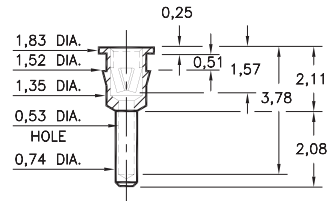
# PIN RECEPTACLES

FOR 0,38 - 0,56 DIAMETER PINS

## 0512

0512-0-15-XX-12-XX-04-0

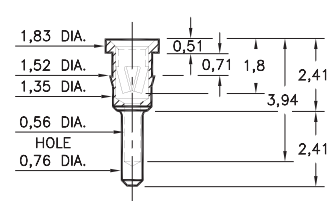
Press-fit in 1,45 mounting hole



## 0703

0703-0-15-XX-12-XX-04-0

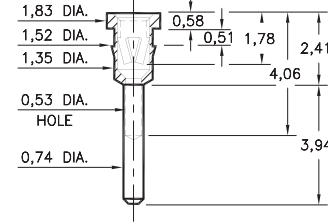
Press-fit in 1,45 mounting hole



## 0574

0574-0-15-XX-12-XX-04-0

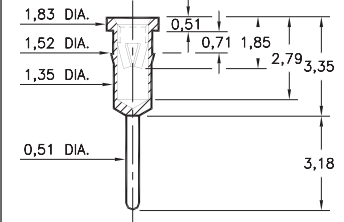
Press-fit in 1,45 mounting hole



## 0468 \*

0468-0-15-XX-12-XX-04-0

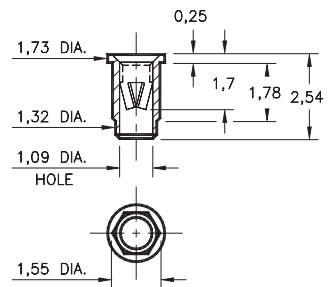
Press-fit in 1,45 mounting hole



## 8894 \*

8894-0-15-XX-12-XX-10-0

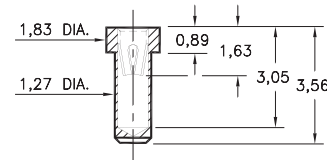
Hex press-fit in 1,5 plated through-hole



## 0550 \*

0550-0-15-XX-22-XX-10-0

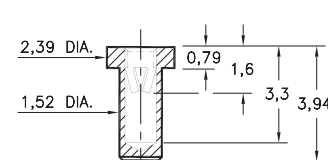
Solder mount in 1,32 min. mounting hole  
Also available on 16mm wide carrier tape:  
1,700 parts per 330mm reel  
See page 194.2 for Tape & Reel details



## 0671 \*

0671-0-15-XX-12-XX-10-0

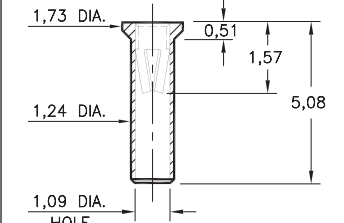
Solder mount in 1,6 min. mounting hole



## 0707 \*

0707-0-15-XX-12-XX-10-0

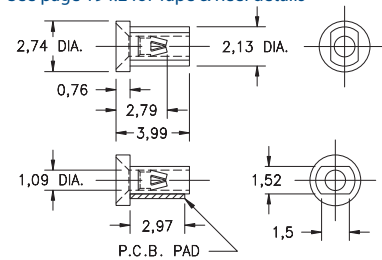
Solder mount in 1,3 min. mounting hole



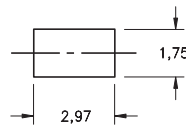
## 5739 \*

5739-0-18-XX-12-XX-10-0

Surface mount  
Also available on 16mm wide carrier tape:  
3,000 parts per 330mm reel  
See page 194.2 for Tape & Reel details



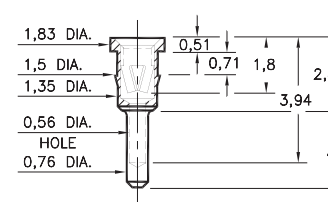
P.C.B. Layout



## 1534

1534-X-15-XX-12-XX-04-0

Press-fit in 1,42 mounting hole



Basic Part Number	Length A
1534-0	2,41
1534-1	3,18

### SPECIFICATIONS:

Shell Material: Brass Alloy 360, 1/2 Hard

Contact Material: Beryllium Copper Alloy 172, HT

Dimensions: Millimeters

Tolerances On: Lengths: ± 0,13

Diameters: ± 0,051

Angles: ± 2°



ORDER CODE: XXXX - X - XX - XX - XX - XX - XX - 0

BASIC PART #

SPECIFY SHELL FINISH:

- 01 5,08µm TIN/LEAD OVER NICKEL
- ◆ 80 5,08µm TIN OVER NICKEL (RoHS)
- ◆ 15 0,25µm GOLD OVER NICKEL (RoHS)

SPECIFY CONTACT FINISH:

- 02 2,54µm TIN/LEAD OVER NICKEL
- ◆ 84 2,54µm TIN OVER NICKEL (RoHS)
- ◆ 27 0,76µm GOLD OVER NICKEL (RoHS)

SELECT CONTACT:

#12 or #22 CONTACT (DATA ON PAGE 252)

\* (Contact may be interchanged with group B or C contact on page 248)



# Mouser Electronics

Authorized Distributor

Click to View Pricing, Inventory, Delivery & Lifecycle Information:

[Mill-Max:](#)

[9016-0-15-01-07-27-10-0](#) [0550-0-15-15-22-27-10-0](#)