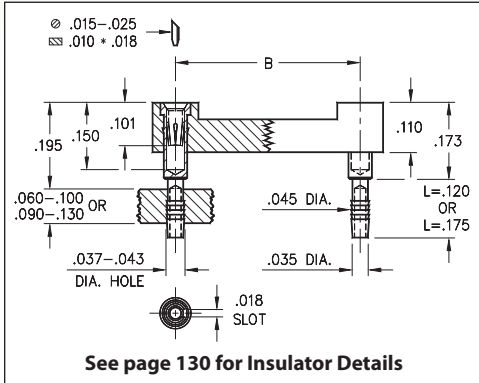
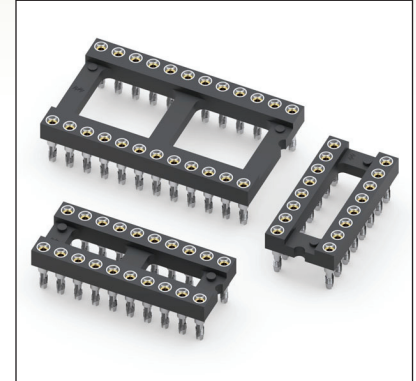


# DUAL-IN-LINE SOCKETS

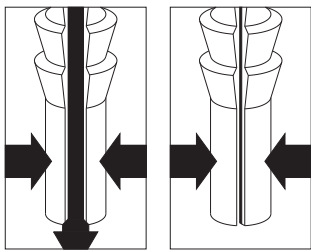
## SERIES 146 • SOLDERLESS PRESS-FIT, COMPLIANT TAIL • OPEN FRAME



- Unique compliant tail pins conform to a  $.040" \pm .003"$  finished plated through hole diameter without stressing inner layers
- Two tails lengths are offered for  $.060"-.100"$  and  $.090"-.130"$  thick panels
- Series 146 uses MM #4612 or MM #4613 pins with a BeCu #30 contact, rated at 3 amps. See page 162 for details
- Insulators are high temperature thermoplastic
- For Electrical, Mechanical and Environmental Data, see page 264 for details



### APPLICATION OF COMPLIANT TAIL PINS



Mill-Max's patented\* precision-machined pins feature compliant tails that are hollow and slotted to conform to a  $.040" \pm .003"$  diameter PTH. As the pin is inserted, the slot compresses to fit the PTH, thus avoiding damage (see illustration at left). The pin's tail has fine serrations that form a perfect "gas tight" connection that doesn't require soldering. And since the pin doesn't damage the hole, compliant tail sockets and connectors can be easily replaced.

\*Patent No. 4,799,904.

Total number of pins				Quantity per tube	ORDERING INFORMATION			
	A	B	C		L = .120 (for .060"-.100" thick panel)	L = .175 (for .090"-.130" thick panel)		
6	0.3	0.3	0.4	67	146-XX-306-41-012000	146-XX-306-41-013000		
8	0.4	0.3	0.4	50	146-XX-308-41-012000	146-XX-308-41-013000		
14	0.7	0.3	0.4	28	146-XX-314-41-012000	146-XX-314-41-013000		
16	0.8	0.3	0.4	25	146-XX-316-41-012000	146-XX-316-41-013000		
18	0.9	0.3	0.4	22	146-XX-318-41-012000	146-XX-318-41-013000		
20	1.0	0.3	0.4	20	146-XX-320-41-012000	146-XX-320-41-013000		
24	1.2	0.3	0.4	16	146-XX-324-41-012000	146-XX-324-41-013000		
22	1.1	0.4	0.5	18	146-XX-422-41-012000	146-XX-422-41-013000		
24	1.2	0.6	0.7	16	146-XX-624-41-012000	146-XX-624-41-013000		
28	1.4	0.6	0.7	14	146-XX-628-41-012000	146-XX-628-41-013000		
32	1.6	0.6	0.7	12	146-XX-632-41-012000	146-XX-632-41-013000		
40	2.0	0.6	0.7	10	146-XX-640-41-012000	146-XX-640-41-013000		
<b>SPECIFY PLATING CODE XX =</b>					91	93	41 ◆	43 ◆
Sleeve (Pin)					200 μ" Sn/Pb	200 μ" Sn/Pb	200 μ" Sn	200 μ" Sn
Contact (Clip)					10 μ" Au	30 μ" Au	10 μ" Au	30 μ" Au



XX=Plating Code  
See Below



# Mouser Electronics

Authorized Distributor

Click to View Pricing, Inventory, Delivery & Lifecycle Information:

## Mill-Max:

[146-93-640-41-013000](#) [146-93-640-41-012000](#) [146-93-632-41-013000](#) [146-93-632-41-012000](#) [146-93-628-41-013000](#) [146-93-628-41-012000](#) [146-93-624-41-013000](#) [146-93-624-41-012000](#) [146-93-422-41-013000](#) [146-93-422-41-012000](#) [146-93-324-41-013000](#) [146-93-324-41-012000](#) [146-93-320-41-013000](#) [146-93-320-41-012000](#) [146-93-318-41-013000](#) [146-93-318-41-012000](#) [146-93-316-41-013000](#) [146-93-316-41-012000](#) [146-93-314-41-013000](#) [146-93-314-41-012000](#) [146-93-308-41-013000](#) [146-93-308-41-012000](#) [146-93-306-41-013000](#) [146-93-306-41-012000](#) [146-44-308-41-012000](#) [146-43-640-41-013000](#) [146-43-640-41-012000](#) [146-43-632-41-013000](#) [146-43-632-41-012000](#) [146-43-628-41-013000](#) [146-43-628-41-012000](#) [146-43-624-41-013000](#) [146-43-624-41-012000](#) [146-43-422-41-013000](#) [146-43-422-41-012000](#) [146-43-324-41-013000](#) [146-43-324-41-012000](#) [146-43-320-41-013000](#) [146-43-320-41-012000](#) [146-43-318-41-013000](#) [146-43-318-41-012000](#) [146-43-316-41-013000](#) [146-43-316-41-012000](#) [146-43-314-41-013000](#) [146-43-314-41-012000](#) [146-43-308-41-013000](#) [146-43-308-41-012000](#) [146-43-306-41-013000](#) [146-43-306-41-012000](#) [146-91-306-41-013000](#) [146-91-314-41-013000](#) [146-91-316-41-013000](#) [146-91-318-41-013000](#) [146-91-320-41-013000](#) [146-91-324-41-012000](#) [146-91-324-41-013000](#) [146-91-422-41-012000](#) [146-91-422-41-013000](#) [146-91-624-41-012000](#) [146-91-624-41-013000](#) [146-91-316-41-012000](#) [146-91-320-41-012000](#) [146-91-306-41-012000](#) [146-91-314-41-012000](#) [146-91-318-41-012000](#) [146-91-308-41-012000](#)