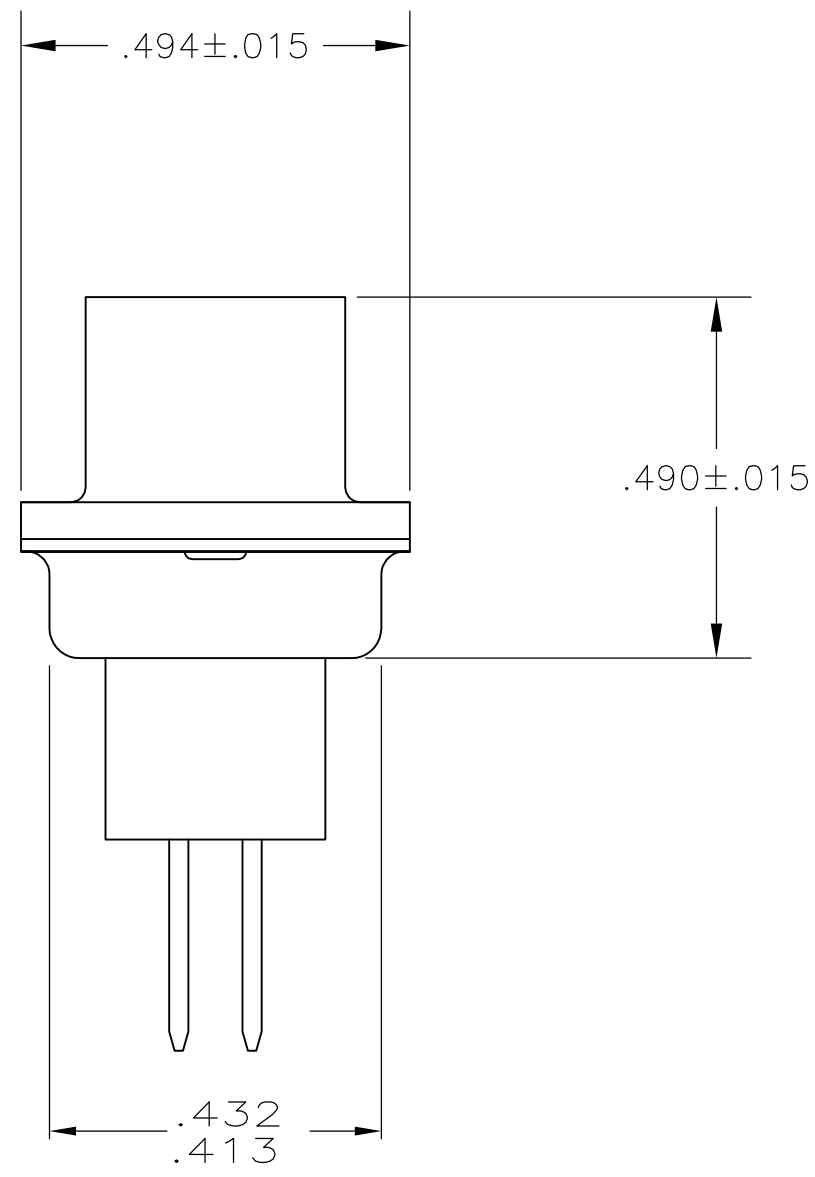
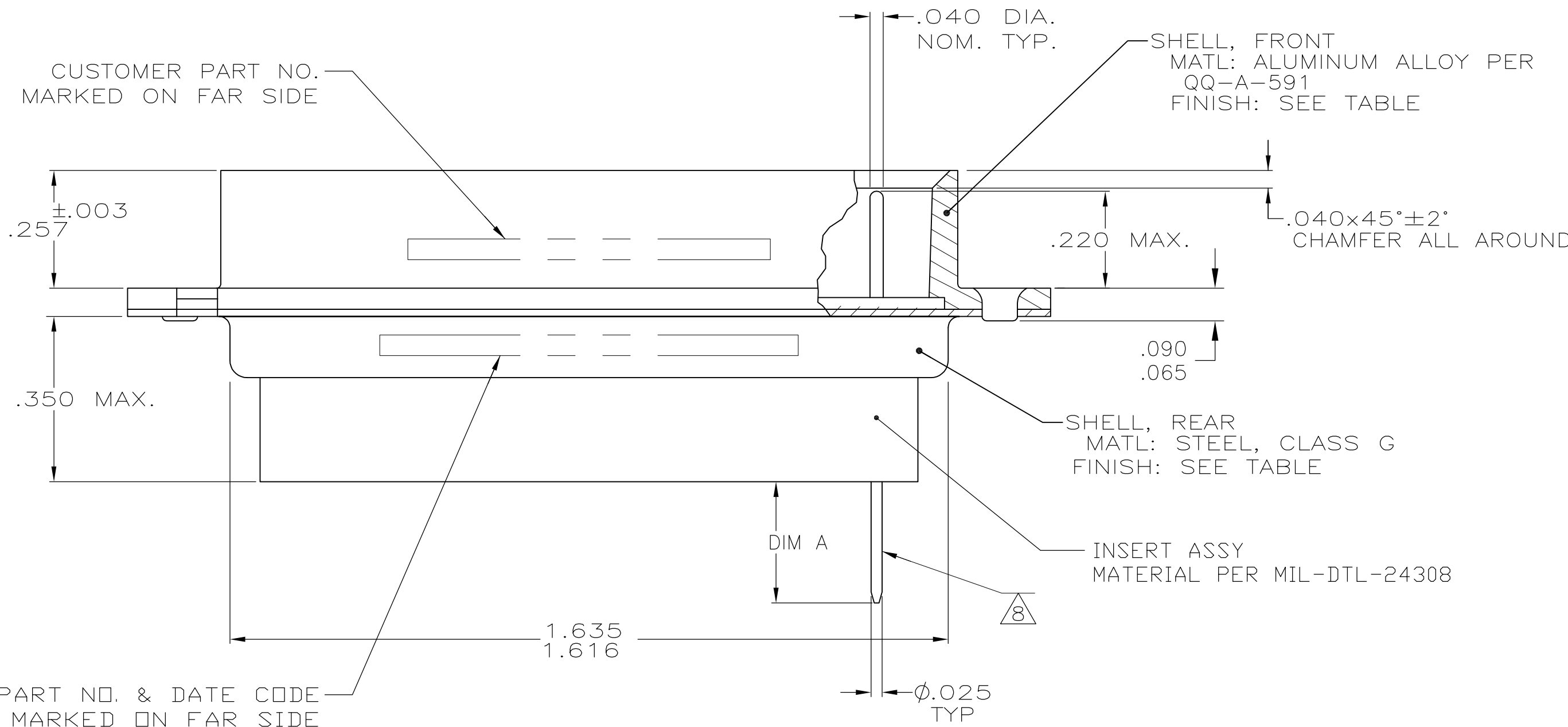
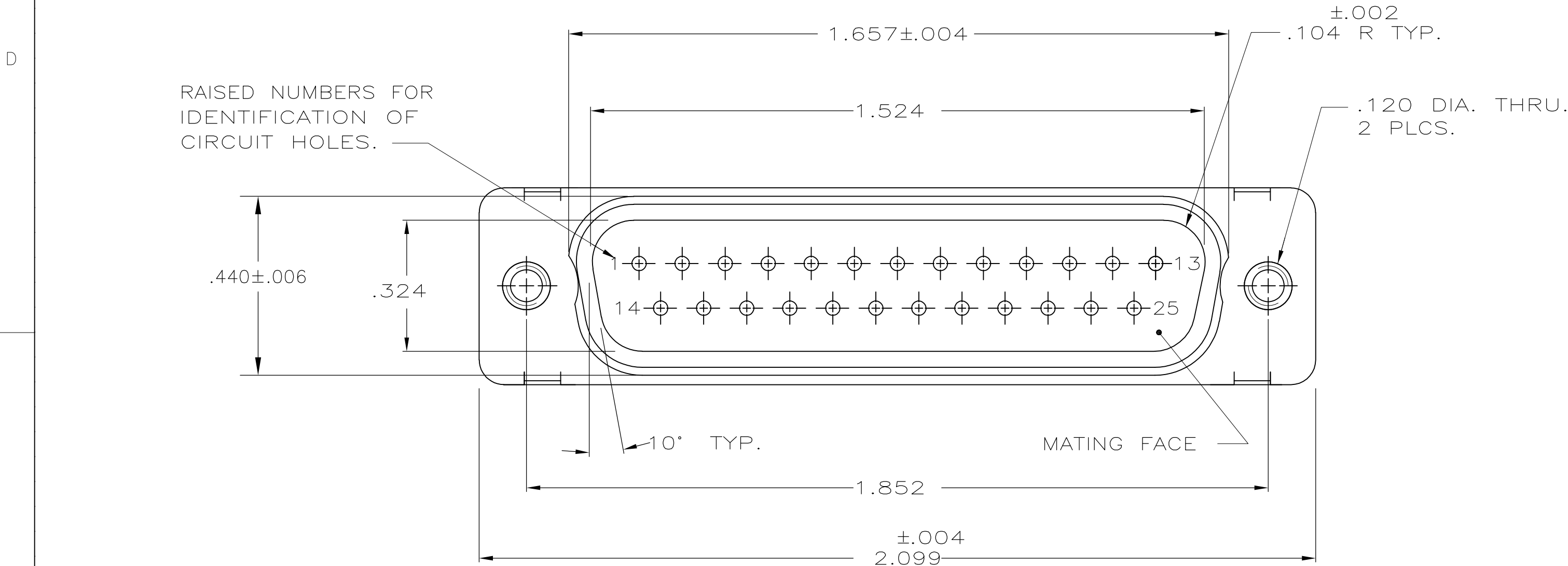


D

C

B

A



- THIS PLUG WILL MATE WITH ANY 25 POSN., SIZE 3 RECEPTACLE IN AMPLIMITE SERIES.
- MAXIMUM WIRE INSULATION TO BE USED WITH THIS PLUG IS .068 DIA.
- SST RETENTION CLIPS ARE INCLUDED IN INSERTS.
- THIS PLUG IS DESIGNED TO CONFORM TO THE LATEST ISSUE OF MIL-C-24308.
- 445007-1 & 5--1 SUPPLIED WITHOUT CONTACTS.
- 445007-1 WILL ACCEPT SIZE 20 DM PIN CONTACT M39029/64-369 OR ANY AMP SIZE 20 DF PIN CONTACT.
- ~~UL/CSA DESIGNATION STAMPED IN THIS AREA~~
- POSTED CONTACTS LOADED IN HOUSING OF 445007-2 .
- 25 EACH OF CONTACT #205089-1 INCLUDED WITH ASSEMBLY; PACKAGED SEPARATELY.
- FINISH: CADMIUM PER QQ-P-416; YELLOW CHROMATE.
- FINISH: ZINC PLATED PER ASTM-B-633 .000200 MIN THK WITH SUPPLEMENTARY CHROMATE (Cr3+).

11	—	AS SHOWN EXCEPT	5-445007-1
10	—	AS SHOWN EXCEPT	445007-3
10	.365/.300	AS SHOWN	445007-2
10	—	AS SHOWN EXCEPT	445007-1
SHELL FINISH		DIM A	PART NO

THIS DRAWING IS A CONTROLLED DOCUMENT.		DWN S. GLATFELTER 10-17-85		TE Connectivity	
CHK F.C. BALLEW 10-17-85		NAME			
DIMENSIONS: INCHES		TOLERANCES UNLESS OTHERWISE SPECIFIED:		NAME	
		0 PLC ± -		PRODUCT SPEC	
		1 PLC ± -		APPLICATION SPEC	
MATERIAL SEE CALLOUT		FINISH SEE CALLOUT		WEIGHT —	
		APPROVED F. BALLEW 10-17-85		SIZE A1	
		CUSTOMER DRAWING		SCALE 4:1	
		SHEET 1 OF 1		REV S	

Mouser Electronics

Authorized Distributor

Click to View Pricing, Inventory, Delivery & Lifecycle Information:

[TE Connectivity:](#)

[5-445007-1](#)