

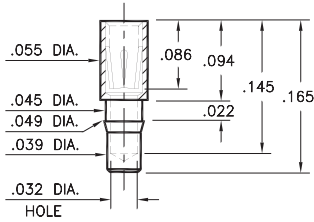
PIN RECEPTACLES

FOR .015" - .025" DIAMETER PINS

0385

0385-0-15-XX-43-XX-10-0

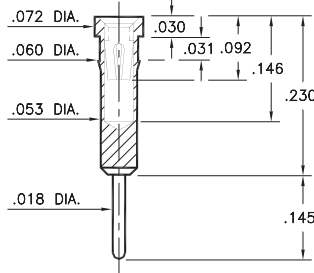
Press-fit in .046 mounting hole



4001

4001-0-15-XX-43-XX-04-0

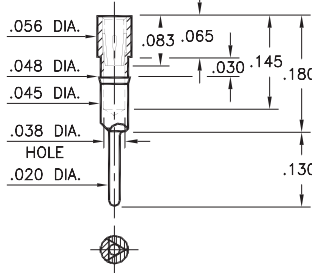
Press-fit in .057 mounting hole



1782

1782-0-15-XX-43-XX-04-0

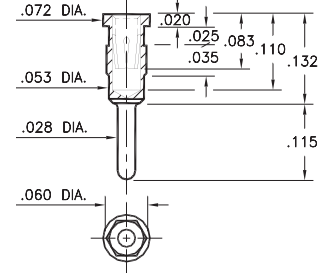
Press-fit in .045 mounting hole



5960

5960-0-15-XX-43-XX-04-0

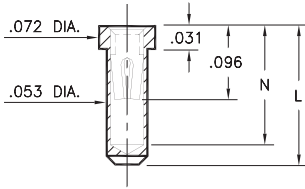
Hex press-fit in .057 plated through-hole



1401/3185

XXXX-0-15-XX-30-XX-10-0

Solder mount in .055 min. mounting hole
Also available on 16mm wide carrier tape:
1,700 parts per 13" reel
See page 194.3 for Tape & Reel details

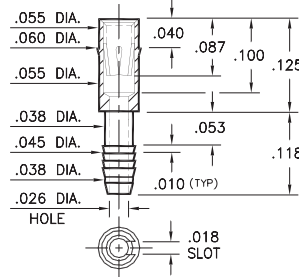


Basic Part Number	Length L	Depth N
1401-0	.165	.145
3185-0	.130	.109

4310

4310-0-31-XX-43-XX-04-0

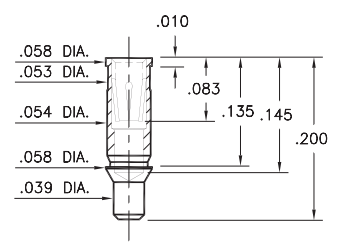
Compliant press-fit in .040 ± .003 plated through-hole. For .090" → .130" thick board



1385

1385-0-15-XX-43-XX-10-0

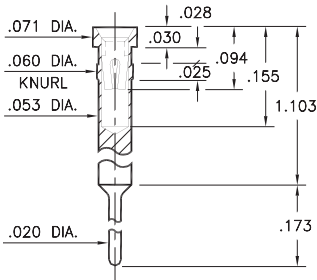
Surface mount



3018

3018-0-15-XX-30-XX-04-0

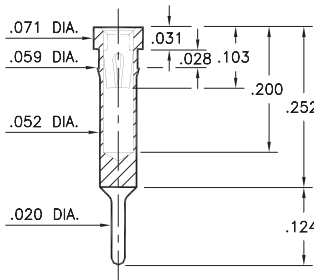
Press-fit in .057 mounting hole



8852

8852-0-15-XX-30-XX-04-0

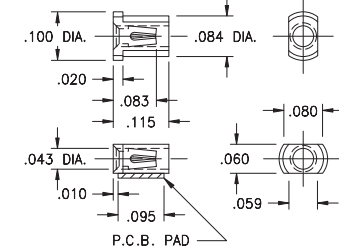
Press-fit in .056 mounting hole



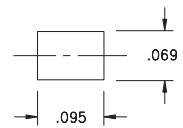
3907

3907-0-18-XX-30-XX-10-0

Surface mount
Also available on 12mm wide carrier tape:
4,000 parts per 13" reel
See page 194.4 for Tape & Reel details



P.C.B. Layout



SPECIFICATIONS:

Shell Material: Brass Alloy 360, 1/2 Hard

Contact Material: Beryllium Copper Alloy 172, HT

Dimensions: Inches

Tolerances On: Lengths: ±.005

Diameters: ±.002

Angles: ± 2°



ORDER CODE: XXXX - X - XX - XX - XX - XX - XX - 0

BASIC PART #

SPECIFY SHELL FINISH:

- 01 200 μ" TIN/LEAD OVER NICKEL
- ◆ 80 200 μ" TIN OVER NICKEL (RoHS)
- ◆ 15 10 μ" GOLD OVER NICKEL (RoHS)

SPECIFY CONTACT FINISH:

- 02 100 μ" TIN/LEAD OVER NICKEL
- ◆ 84 100 μ" TIN OVER NICKEL (RoHS)
- ◆ 27 30 μ" GOLD OVER NICKEL (RoHS)

SELECT CONTACT:

#30, #35 or #43 CONTACT (DATA ON PAGE 253 & 254)
(For alternate contact choices, see groups B and C on page 248)



Mouser Electronics

Authorized Distributor

Click to View Pricing, Inventory, Delivery & Lifecycle Information:

Mill-Max:

[3185-0-15-01-30-02-10-0](#) [3185-0-15-01-30-27-10-0](#) [1782-0-15-01-43-27-04-0](#) [1401-0-15-01-30-27-10-0](#) [1401-0-15-15-30-27-10-0](#) [1401-0-15-01-30-02-10-0](#) [0385-0-15-01-43-27-10-0](#) [3185-0-15-80-30-84-10-0](#) [3185-0-15-80-30-27-10-0](#) [1782-0-15-15-43-27-04-0](#) [3185-0-15-15-30-27-10-0](#) [3907-0-18-15-30-27-10-0](#) [1401-0-15-00-00-00-10-0](#) [1782-0-15-00-00-00-04-0](#) [0385-0-15-00-00-00-10-0](#) [4310-0-31-00-00-00-04-0](#) [4001-0-15-00-00-00-04-0](#) [8852-0-15-00-00-00-04-0](#) [3185-0-15-00-00-00-10-0](#) [3018-0-15-00-00-00-04-0](#) [5960-0-15-00-00-00-04-0](#) [3185-0-15-01-30-14-10-0](#) [1782-0-15-01-43-14-04-0](#) [3018-0-15-01-30-14-04-0](#) [3018-0-15-80-30-14-04-0](#) [1385-0-15-01-43-14-10-0](#) [3907-0-18-80-30-14-10-0](#) [1385-0-15-80-43-14-10-0](#) [3185-0-15-80-30-14-10-0](#) [0385-0-15-80-43-14-10-0](#) [1401-0-15-01-30-14-10-0](#) [0385-0-15-01-43-14-10-0](#) [1782-0-15-80-43-14-04-0](#) [1401-0-15-80-30-14-10-0](#) [0385-0-15-15-43-14-10-0](#) [1401-0-15-15-30-14-10-0](#) [4001-0-15-80-43-14-04-0](#) [5960-0-15-01-43-14-04-0](#) [4310-0-31-01-43-14-04-0](#) [5960-0-15-80-43-14-04-0](#) [8852-0-15-80-30-14-04-0](#) [4310-0-31-80-43-14-04-0](#) [8852-0-15-01-30-14-04-0](#)