

4

3

2

1

THIS DRAWING IS UNPUBLISHED.

RELEASED FOR PUBLICATION

© COPYRIGHT

ALL RIGHTS RESERVED.

LOC

DIST


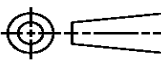
REVISIONS

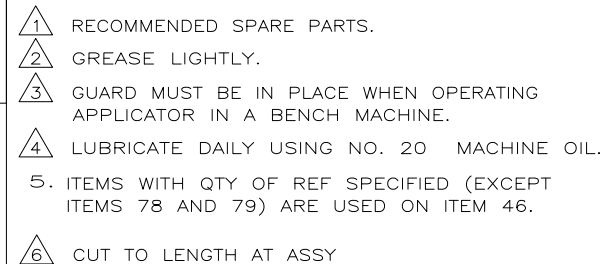
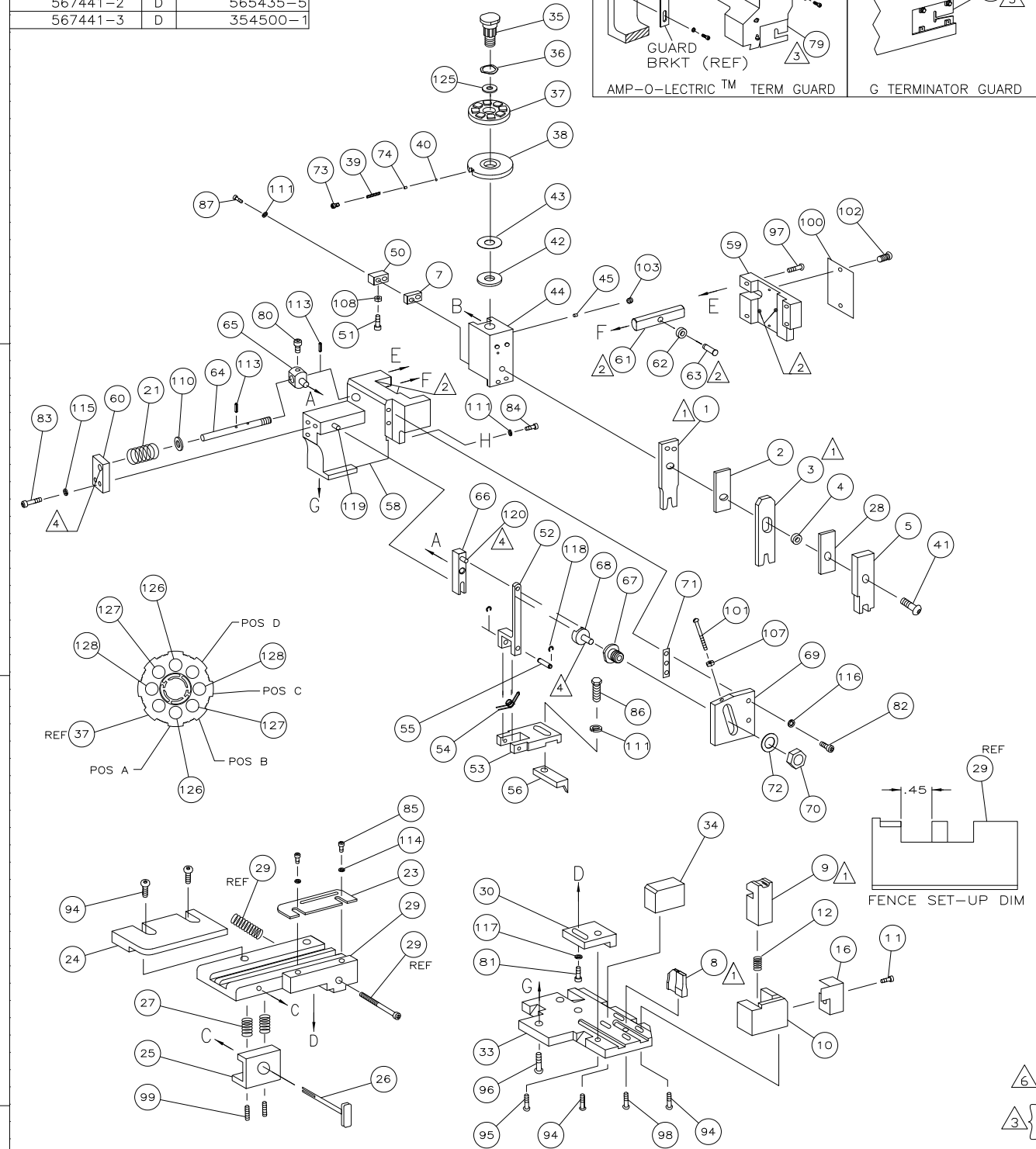
P	LTR	DESCRIPTION	DATE	DWN	APVD
	D1	ECR-14-002245	19FEB2014	GK	HMR

REPLACED BY OCEAN STYLE APPLICATOR PART
NUMBER 2266011-1

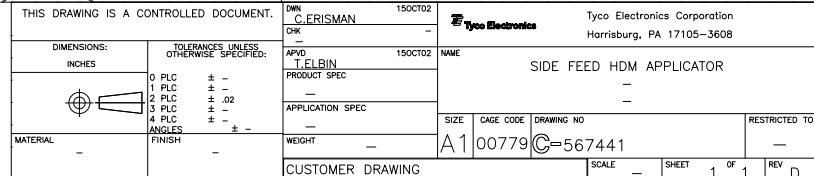
FOR REPLACEMENT PARTS FOR APPLICATOR 567441
REFER TO ADDITIONAL PAGE(S). SPARE PARTS KIT (IF LISTED)
WILL REMAIN AVAILABLE.

THE REPLACEMENT OCEAN STYLE APPLICATOR HAS THE
SAME TERMINATOR/PRESS INTERFACE AS APPLICATOR
567441

THIS DRAWING IS A CONTROLLED DOCUMENT.		DWN GOPALAKRISHNA HV		 TE Connectivity			
DIMENSIONS:		CHK RAGHAVENDRA					
		APVD RAGHAVENDRA		NAME SIDE FEED HDM APPLICATOR			
		PRODUCT SPEC					
		APPLICATION SPEC					
MATERIAL		WEIGHT		SIZE A3	CAGE CODE	DRAWING NO C- 567441	RESTRICTED TO
FINISH		CUSTOMER ACCESSIBLE PRODUCTION DRAWING		SCALE	SHEET 1 OF 2	REV D1	



							129
2	2	2	-	3-354779-2	PIN, WIRE DISC (.3150)C		128
2	2	2	-	2-354779-0	PIN, WIRE DISC (.3090)B		127
2	2	2	-	354779-8	PIN, WIRE DISC (.3030)A		126
1	1	1	-	986950-1	WASHER, FLAT PRECISION		125
1	1	1	-	217238-1	GENERAL INSTRUCTION PACKAGE		124
1	1	1	-	4088040	SF APPL INST 408-8040		123
							122
							121
REF	REF	REF	-	1-21030-1	PIN,DOWEL(Ø.187x.50)LEVER		120
REF	REF	REF	-	1-21030-6	PIN,DOWEL(Ø.187x1.25)HOUSING		119
REF	REF	REF	-	21045-3	RING,RET "C"(Ø.187)FD FING PIN		118
1	1	1	-	21024-5	WASHER, LOCK(#10)ADJ BLOCK		117
REF	REF	REF	-	21024-5	WASHER,LOCK(#10)ADJ PLATE		116
REF	REF	REF	-	21024-5	WASHER,LOCK(#10)FEED GDE ROD		115
2	2	2	-	21024-2	WASHER,LOCK(#4)FRONT STP GUIDE		114
REF	REF	REF	-	5-21028-1	PIN,SLT SPR(Ø.125x.50)ADJ ROD		113
							112
4	4	4	-	21024-4	WASHER,LOCK(#8)STRIPPER		111
REF	REF	REF	-	21899-4	WASHER,FLAT(Ø5/16)SCREW ADJ		110
							109
1	1	1	-	21018-5	NUT,HEX(NO.6)HOLDDOWN		108
REF	REF	REF	-	21068-5	NUT,HEX(6-32)FEED ADJ		107
							106
							105
							104
1	1	1	-	21009-2	SCR,SKT SET(1/4-20x.25 LW)RAM		103
2	2	2	-	21017-2	SCR,DRIVE(#2x.19)ID PLATE		102
REF	REF	REF	-	6-23715-5	SCR,PAN HD(6-32x1.50)FEED ADJ		101
1	1	1	-	461264-1	PLATE, IDENTIFICATION		100
2	2	2	-	5-21006-6	SCR,SET(10-32x.75)DRAG		99
1	1	1	-	22733-8	SCR,BHC(8-32x.38 LW)ANVIL		98
REF	REF	REF	-	2-21002-9	SCR,BHC(10-32x.75)CAP		97
REF	REF	REF	-	2-22733-8	SCR,BHC(1/4-20x.62)HOUSING		96
REF	REF	REF	-	2-21002-7	SCR,BHC(10-32x.50)SG ADJ BLOCK		95
6	6	6	-	2-21002-2	SCR,BHC(8-32x.50)TERM H DWN		94
							93
							92
1	1	1	-	1-21002-7	SCR,BHC(6-32x.38)CAM		91
							90
							89
							88
2	2	2	-	2-21000-8	SCR,SHC(8-32x.62)DEP-HOLD		87
1	1	1	-	2-22603-0	SCR,HEX HD(8-32x.31)FEED FINGER		86
2	2	2	-	1-21000-3	SCR,SHC(4-40x.25)FR ST GUIDE		85
1	1	1	-	2-21000-7	SCR,SHC(8-32x.50)STRIPPER		84
REF	REF	REF	-	3-21000-7	SCR,SHC(10-32x.75)FEED ROD GD		83
REF	REF	REF	-	3-21000-6	SCR,SHC(10-32x.62)FD ADJ BLK		82
1	1	1	-	7-21000-6	SCR,SHC(10-32x.31)SG ADJ BL		81
REF	REF	REF	-	3-21000-4	SCR,SHC(10-32x.38)PIVOT BLK		80
REF	-	-	-	455749-1	GUARD, WINDOW		79
REF	-	-	-	679532-1	INSERT, GUARD		78
							77
							76
							75
1	1	1	-	690603-1	SPRING, ASSIST		74
1	1	1	-	23030-1	SCR,SHC(6-32x.25 SL)INS DISC		73
REF	REF	REF	-	458109-1	WASHER, SPECIAL		72
REF	REF	REF	-	690517-1	SPACER		71
-3	-2	-1	U/M	PART NO	DESCRIPTION		ITEM NO.
QTY REQD	PER ASSY			PARTS LIST			



LOC		DIST		REVISIONS						
A		66		P	LTR	DESCRIPTION		DATE	OWN	APVD
				D		ECR-07-016343		7-2007	MY	GB

-1	LEADMAKER			MECH POST FEED		
-2	BENCH	MODEL	K	MECH PRE FEED		
-3	BENCH	MODEL	G	MECH PRE FEED		

REF	REF	REF	-	22594-8	NUT,HEX(1/2-20)	70
REF	REF	REF	-	240628-1	PLATE, ADJUSTMENT	69
REF	REF	REF	-	240626-1	SHAFT, PIVOT	68
REF	REF	REF	-	240633-1	BUSHING	67
REF	REF	REF	-	455680-1	LEVER, INTERMEDIATE	66
REF	REF	REF	-	240629-1	BLOCK, PIVOT	65
REF	REF	REF	-	240632-2	SCREW, ADJ FEED ROD	64
REF	REF	REF	-	240659-3	PIN, CAM ROLLER	63
REF	REF	REF	-	240658-1	ROLLER, CAM	62
REF	REF	REF	-	454398-2	ROD, FEED	61
REF	REF	REF	-	454178-1	GUIDE, FEED ROD	60
REF	REF	REF	-	454220-1	CAP, RAM	59
REF	REF	REF	-	454485-1	HOUSING	58
						57
1	1	1	-	458537-2	PAWL, FEED	56
REF	REF	REF	-	240624-1	PIN, FEED FINGER	55
REF	REF	REF	-	691499-1	SPRING, FEED FINGER	54
REF	REF	REF	-	690541-1	HOLDER, FEED FINGER	53
REF	REF	REF	-	455679-1	LEVER, TERMINAL FEED ARM	52
1	1	1	-	811242-2	BUMPER, HOLDDOWN	51
1	1	1	-	690753-1	SPACER, TONKER	50
1	-	-	-	690602-6	CAM, PRE-FEED 1 5/8 ST	49
-	1	-	-	690602-5	CAM, PRE-FEED 1 1/8 ST	48
-	-	1	-	690501-4	CAM, POST-FEED 1 5/8 ST	47
1	1	1	-	459456-1	APPLICATOR, BASIC (SUBASSY)	46
1	1	1	-	690191-1	PLUG, NYLON	45
1	1	1	-	455673-1	RAM	44
1	1	1	-	690125-1	WASHER, LAMINATED	43
1	1	1	-	690124-1	WASHER, RAM	42
1	1	1	-	7-21002-9	BOLT, CRIMPER(5/16x1.00)	41
1	1	1	-	23241-6	BALL, STEEL	40
1	1	1	-	690170-1	SPRING, COMPRESSION	39
1	1	1	-	690142-1	DISC, INSULATION	38
1	1	1	-	354777-1	WIRE DISC, PLASTIC	37
1	1	1	-	22480-5	WASHER, SPRING	36
1	1	1	-	690212-1	POST, RAM	35
1	1	1	-	690786-1	SUPPORT, TERMINAL	34
REF	REF	REF	-	455675-1	PLATE, BASE	33
						32
						31
REF	REF	REF	-	455689-1	BLOCK, STRIP GUIDE ADJ	30
1	1	1	-	318042-1	STRIP GUIDE PLATE ASSY	29
1	1	1	-	1-455888-3	SPACER, FRONT SHEAR DEP	28
2	2	2	-	1-22284-0	SPRING, DRAG	27
1	1	1	-	690546-1	LEVER, DRAG RELEASE	26
1	1	1	-	240792-1	DRAG, TERMINAL	25
1	1	1	-	6-690504-8	GUIDE, STRIP (REAR)	24
1	1	1	-	690438-1	GUIDE, STRIP (FRONT)	23
-	-	1	-	690472-2	STRIPPER	22
REF	REF	REF	-	4-22284-9	SPRING, FEED RETURN	21
						20
1	1	-	-	691353-1	STRIPPER	19
						18
						17
1	1	1	-	318563-1	GUARD, CHIP, FRONT	16
						15
						14
						13
1	1	1	-	3-22280-3	SPRING, SHEAR	12
1	1	1	-	690461-1	STOP, SHEAR	11
1	1	1	-	690459-1	HOLDER, SHEAR (FRONT)	10
1	1	1	-	462006-1	SHEAR, FLOAT (FRONT)	9
1	1	1	-	3-854014-1	ANVIL	8
1	1	1	-	240641-1	SPACER, DEPRESSOR (REAR)	7
						6
1	1	1	-	2-455889-0	DEPRESSOR, SHEAR (FRONT)	5
1	1	1	-	238011-7	SPACER, BLOCK CRIMPER	4
1	1	1	-	2-456134-2	CRIMPER, INSULATION	3
1	1	1	-	455888-6	SPACER, CRIMPER	2
1	1	1	-	2-456405-5	CRIMPER, WIRE	1
-3	-2	-1	U/M	PART NO	DESCRIPTION	ITEM NO
				PARTS LIST		
QTY REQD PER ASSY						

Mouser Electronics

Authorized Distributor

Click to View Pricing, Inventory, Delivery & Lifecycle Information:

[TE Connectivity:](#)

[567441-1](#)