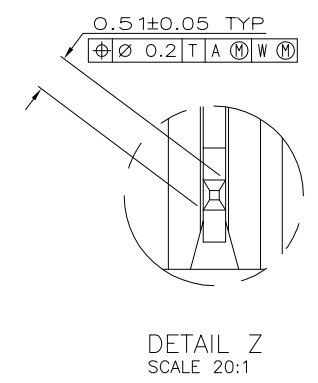
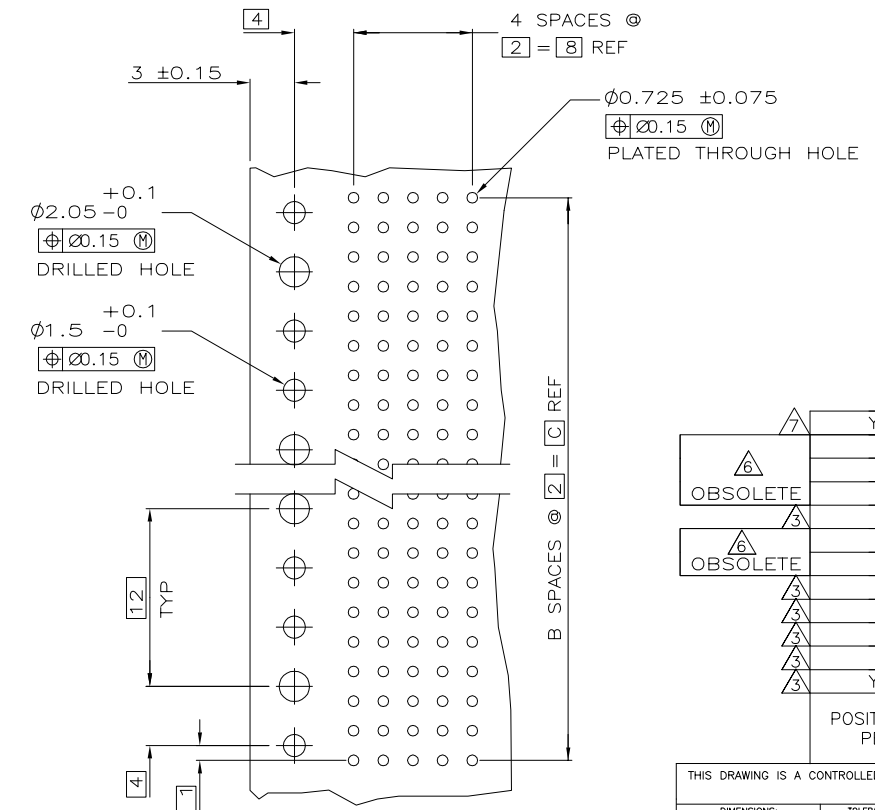
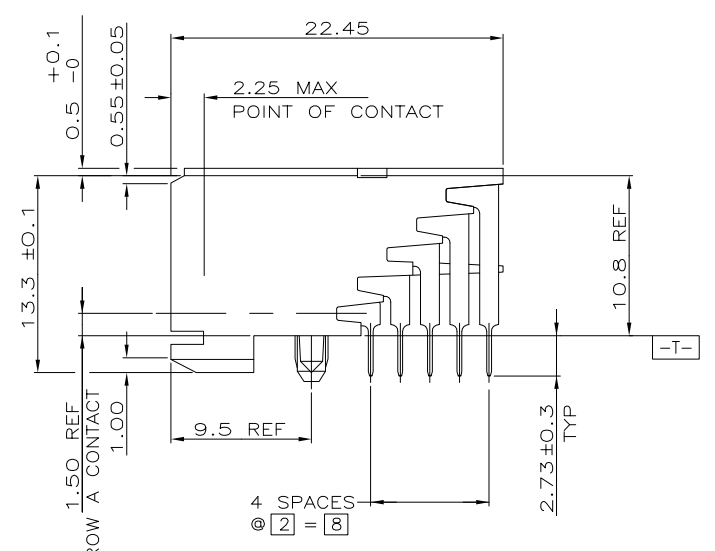
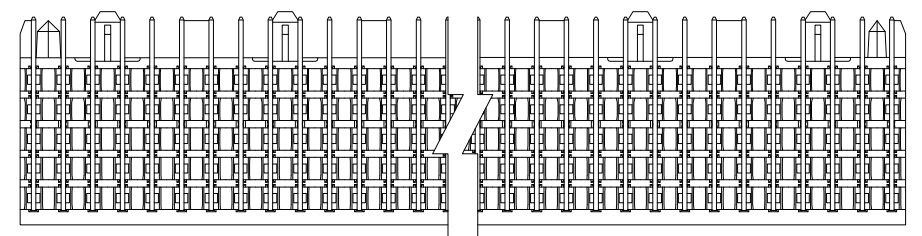
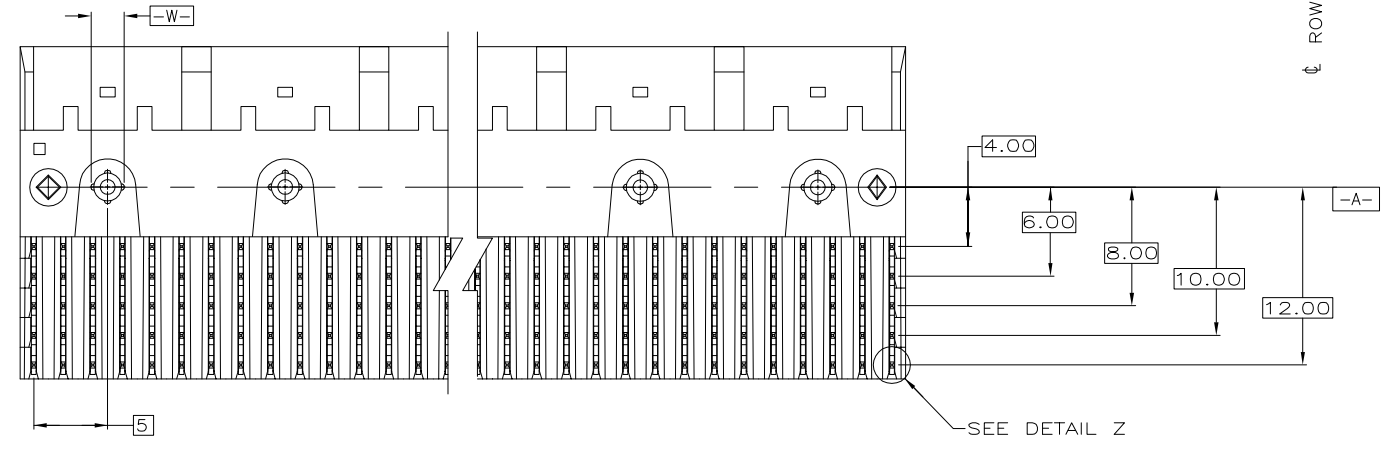
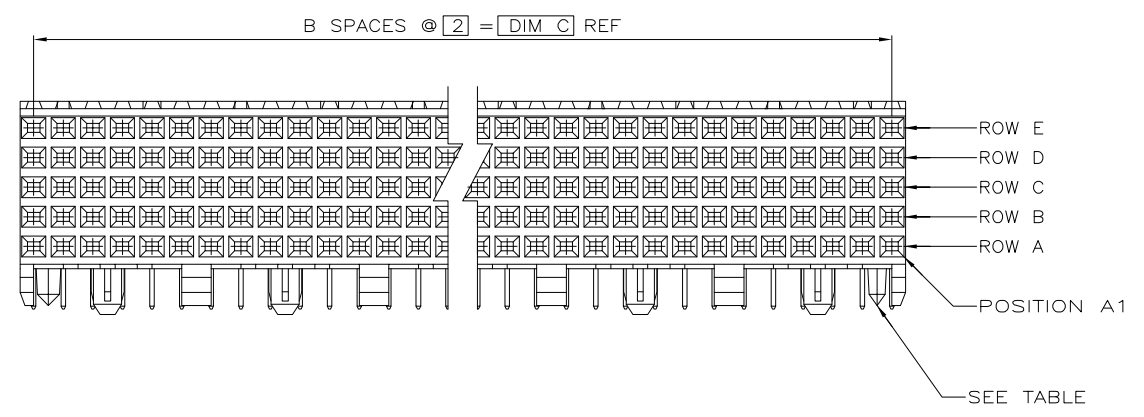
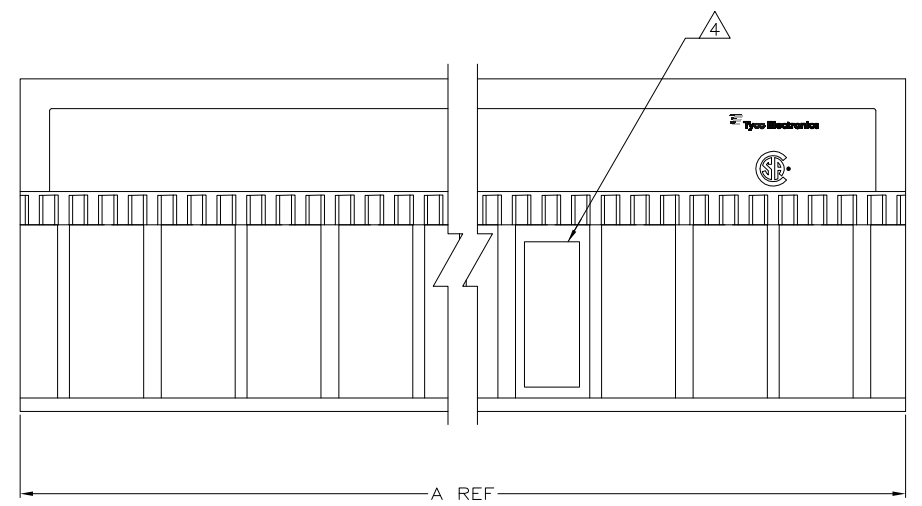


LOC	DIST	#	DATE	BY	APP'D
AD	00	02	16APR08	DH	AS
		A	03NOV15	DS	FY



- ① HOUSING MATERIAL: LIQUID CRYSTAL POLYMER
COLOR: NATURAL.
- ② CONTACT MATERIAL: PHOSPHOR-BRONZE.
- ③ CONTACT FINISH:(A)
UNDERPLATE (ENTIRE CONTACT):
0.00127 MIN NICKEL PER SAE-AMS-QQ-N-290
ON MATING SURFACES:
CONFORMS TO ALL TESTING SPECIFIED FOR TELCORDIA UNCONTROLLED ENVIRONMENT.
ON LEADS:
0.00381 MIN MATTE TIN PER ASTM B 545 OVER UNDERPLATE.
LUBRICATION (MIN MATING SURFACES):
SURFACE CONDITIONER AFTER PLATING.
- ④ PART MARKING LOCATED APPROXIMATELY AS SHOWN.
- ⑥ OBSOLETE PARTS: OBSOLETE CIS STREAMLINING PER D.RENAUD/D.SINISI
- ⑦ CONTACT FINISH:(A)
UNDERPLATE (ENTIRE CONTACT):
0.00127 MIN NICKEL PER SAE-AMS-QQ-N-290
ON MATING SURFACES:
0.00076 MIN GOLD PER ASTM B-488 OVER UNDERPLATE.
ON LEADS:
0.00381 MIN MATTE TIN PER ASTM B 545 OVER UNDERPLATE.
LUBRICATION (MIN MATING SURFACES):
SURFACE CONDITIONER AFTER PLATING.

RECOMMENDED CIRCUIT PATTERN
PER IPC-D300 TYPE II, CLASS C
(COMPONENT SIDE)

REV	DESCRIPTION	DATE	BY	APP'D
02	REVISED PER ECO-08-009053	16APR08	DH	AS
A	REVISED PER ECO-15-015007	03NOV15	DS	FY

REV	DESCRIPTION	DATE	BY	APP'D		
①	YES	10	3	11.88	30	3-5223004-1
②	NO	130	65	131.88	330	-1-5223004-1
③	NO	118	59	119.88	300	-1-5223004-0
④	NO	106	53	107.88	270	-5223004-9
⑤	NO	94	47	95.88	240	5223004-8
⑥	NO	82	41	83.88	210	-5223004-7
⑦	NO	70	35	71.88	180	-5223004-6
⑧	NO	58	29	59.88	150	5223004-5
⑨	NO	46	23	47.88	120	5223004-4
⑩	NO	34	17	35.88	90	5223004-3
⑪	NO	22	11	23.88	60	5223004-2
⑫	YES	10	3	11.88	30	5223004-1

POSITIONING PEGS	C	B	A	NO OF SIGNAL POSN	PART NUMBER

THIS DRAWING IS A CONTROLLED DOCUMENT.		DWI B.MCMASTER 19NOV04	 TE Connectivity
DIMENSIONS: mm		CHK R.WERTZ 19NOV04	
TOLERANCES UNLESS OTHERWISE SPECIFIED:		APP'D R.WERTZ 19NOV04	ASSEMBLY, RECEPTACLE, SIGNAL, RIGHT ANGLE, Z-PACK 2mm FB, 5 ROW, SOLDER LEAD
0 PLC ± -		NAME	APPLICATION SPEC
1 PLC ± -			
2 PLC ± 0.13			
3 PLC ± -			
4 PLC ± -			
ANGLES ± -			
FINISH			
MATERIAL		SIZE CAGE CODE DRAWING NO	RESTRICTED TO
① ②		A1 00779 C=5223004	
③ ④ ⑤		WEIGHT	
		CUSTOMER DRAWING	SCALE 4:1 SHEET 1 OF 1 REV A