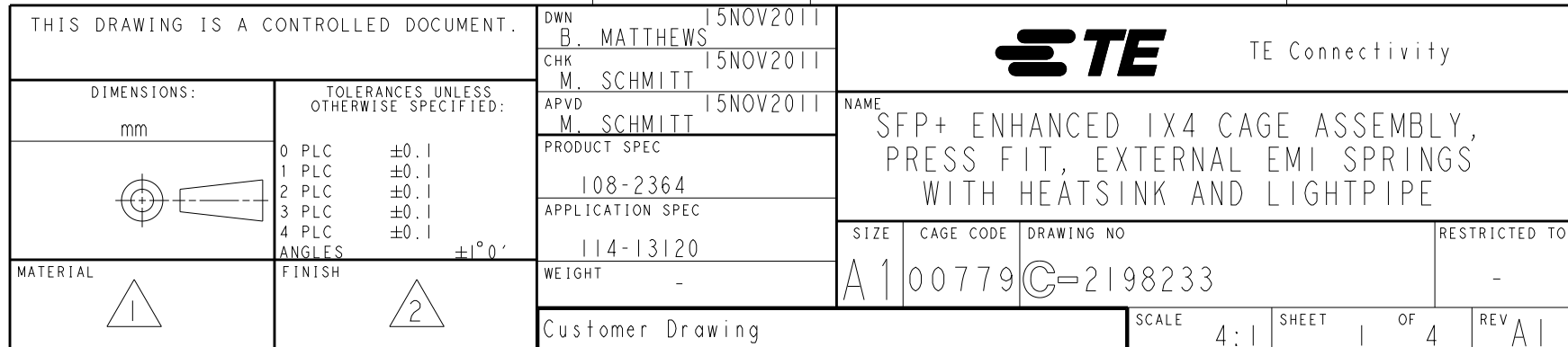
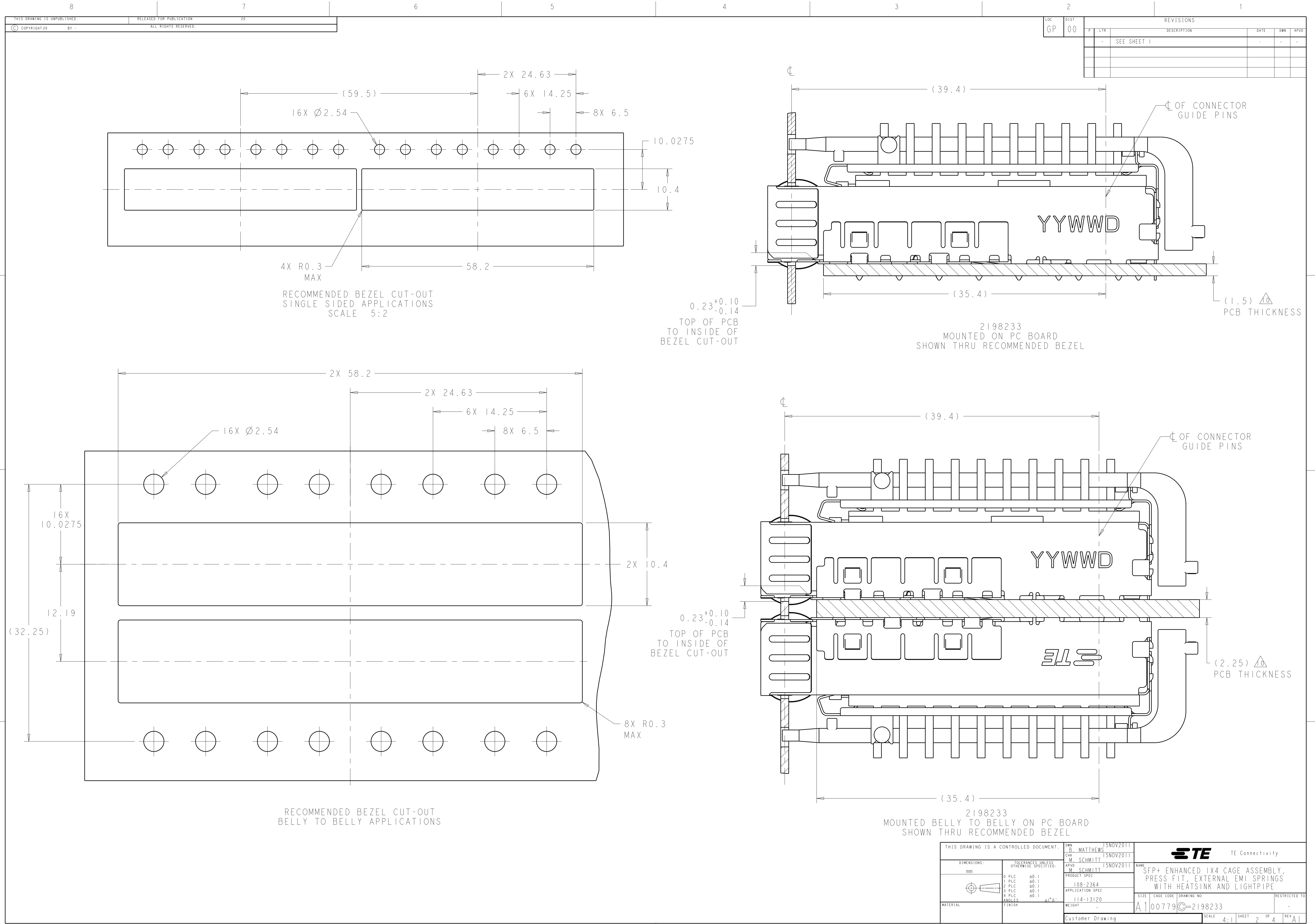




- 

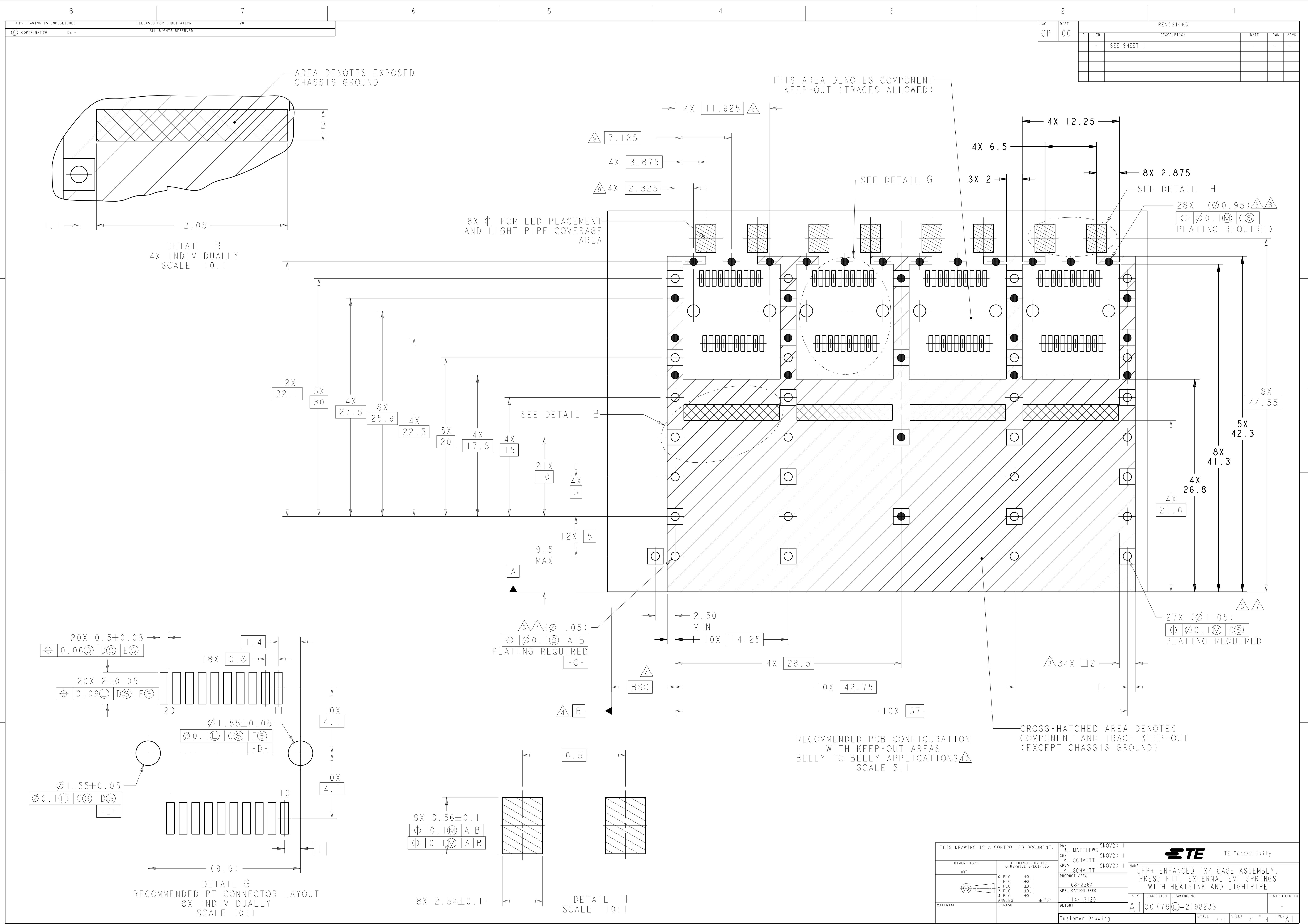
5	22.5	NETWORKING, TALL	2198233-4
5	18.1	NETWORKING, SHORT	2198233-3
4	15.5	SAN	2198233-2
4	13.2	PCI	2198233-1
	A MAX	APPLICATION	PART NUMBER







THIS DRAWING IS A CONTROLLED DOCUMENT.		OWN B. MATTHEWS	15NOV2011	 TE Connectivity			
<div>DIMENSIONS:  mm</div> <div></div>		CHK M. SCHMITT	15NOV2011				
		APPROV M. SCHMITT	15NOV2011				
TOLERANCES UNLESS OTHERWISE SPECIFIED:		PRODUCT SPEC 108-2364		NAME SFP+ ENHANCED 1X4 CAGE ASSEMBLY, PRESS FIT, EXTERNAL EMI SPRINGS WITH HEATSINK AND LIGHTPIPE			
MATERIAL		APPLICATION SPEC 114-13120		SIZE	CAGE CODE	DRAWING NO	RESTRICTED TO
FINISH		WEIGHT		A1		00779	©=2198233
		Customer Drawing		SCALE	A:1	SHEET 3 OF 4	REV Δ



# Mouser Electronics

Authorized Distributor

Click to View Pricing, Inventory, Delivery & Lifecycle Information:

[TE Connectivity:](#)

[2198233-4](#)