

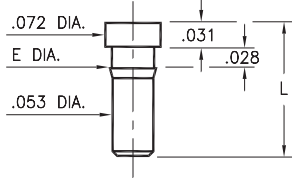
MALE PCB PINS

PRINTED CIRCUIT PINS

0259/0286/1941

XXXX-0-00-XX-00-00-03-0

Press-fit in .057/.059 mounting hole



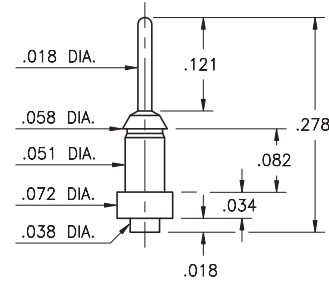
Basic Part Number	Length L	Barb Dia. E	Mounting Hole
0259-0	.173	.062	.059
0286-0	.115	.060	.057
*1941-0	.169	.058	.056

* Flat face Target contact

2956-0

2956-0-00-XX-00-00-03-0

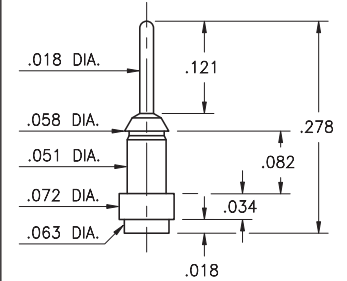
Surface mount



2956-1

2956-1-00-XX-00-00-03-0

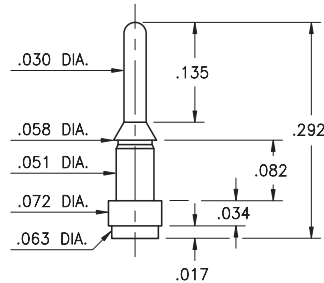
Surface mount



4956-1

4956-1-00-XX-00-00-33-0

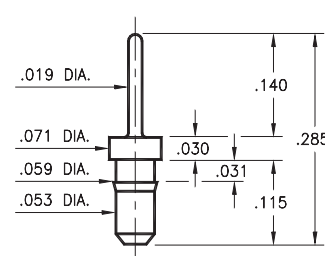
Surface mount



8876

8876-0-00-XX-00-00-03-0

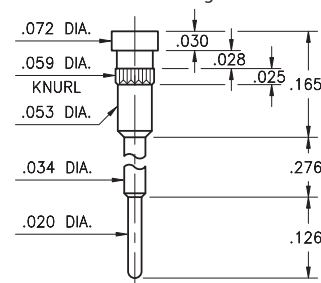
Press-fit in .057 mounting hole



1938

1938-0-00-XX-00-00-03-0

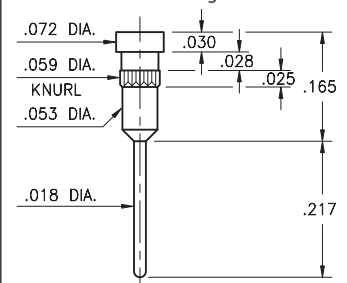
Flat face Target contact, solder Tail
Press-fit in .057 mounting hole



1940

1940-0-00-XX-00-00-03-0

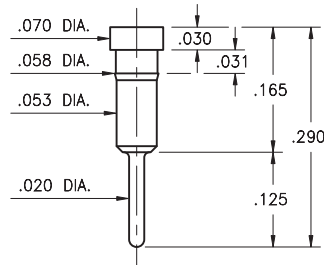
Flat face Target contact, solder Tail
Press-fit in .057 mounting hole



1942

1942-0-00-XX-00-00-03-0

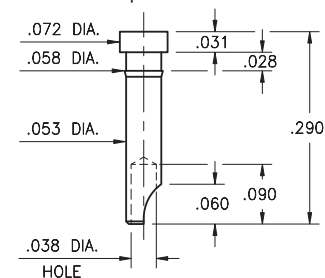
Flat face Target contact, solder Tail
Press-fit in .056 mounting hole



3024

3024-0-01-XX-00-00-03-0

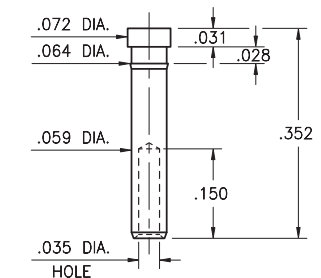
Flat face Target contact, solder cup
Press-fit in .056 mounting hole
For wire sizes up to 22 AWG



3000

3000-0-00-XX-00-00-03-0

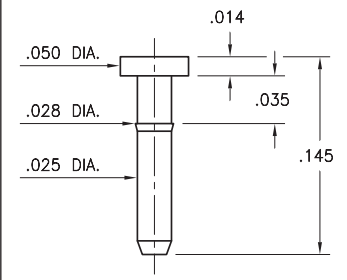
Flat face Target contact, wire termination
Press-fit in .061 mounting hole. Accepts wire sizes 24 AWG Max. / 28 AWG Min.



6430

6430-0-00-XX-00-00-03-0

Press-fit in .025 mounting hole



SPECIFICATIONS:

Pin Material: Brass Alloy 360, 1/2 Hard
(Except swage pins which are annealed)

Dimensions: Inches

Tolerances On: Lengths: ± .005
Diameters: ± .002
Angles: ± 2°



ORDER CODE: XXXX - X - 0X - XX - 00 - 00 - XX - 0

BASIC PART #

SPECIFY PIN FINISH:

- 01 200 μ" TIN/LEAD OVER NICKEL
- ◆ 80 200 μ" TIN OVER NICKEL (RoHS)
- ◆ 15 10 μ" GOLD OVER NICKEL (RoHS)
- ◆ 21 20 μ" GOLD OVER NICKEL (RoHS)
- ◆ 34 50 μ" GOLD OVER NICKEL (RoHS)



Mouser Electronics

Authorized Distributor

Click to View Pricing, Inventory, Delivery & Lifecycle Information:

Mill-Max:

[0286-0-00-01-00-00-03-0](#) [0259-0-00-01-00-00-03-0](#) [0259-0-00-15-00-00-03-0](#) [0259-0-00-21-00-00-03-0](#) [0259-0-00-34-00-00-03-0](#) [0286-0-00-15-00-00-03-0](#) [0286-0-00-21-00-00-03-0](#) [0286-0-00-34-00-00-03-0](#) [1938-0-00-15-00-00-03-0](#) [1942-0-00-15-00-00-03-0](#) [3024-0-01-15-00-00-03-0](#) [3000-0-00-15-00-00-03-0](#) [8876-0-00-00-00-00-03-0](#) [3024-0-01-00-00-00-03-0](#) [2956-1-00-00-00-00-03-0](#) [2956-0-00-00-00-00-03-0](#) [0286-0-00-00-00-00-03-0](#)