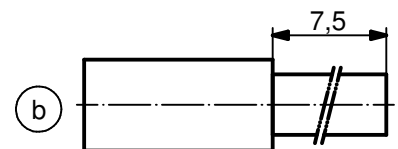


- b) NOTES:**
1. MATERIAL: COPPER ALLOY
 2. PLATING:
 - ITEM 1: 30µin HARD GOLD over min. 50µin NICKEL
 - ITEM 2: GOLD FLASH over NICKEL
 - ITEM 3: NICKEL PLATED
 3. CRIMPING: USE CRIMP TOOL 360X10409X
WITH TOOL INSERT 360X20029X
SELECTOR SETTINGS: 3 FOR AWG 16
2 FOR AWG 18
2 FOR AWG 20

STRIPPING DIMENSIONS



Directive 2002/95/EC RoHS compliant

b)

THIS DRAWING MAY NOT BE COPIED OR REPRODUCED IN ANY WAY, AND MAY NOT BE PASSED ON TO A THIRD PARTY WITHOUT WRITTEN PERMISSION. OWNERSHIP AND COPYRIGHT OF CONEC GmbH

DO NOT ALTER CAD DRAWING BY HAND

finish: SEE NOTES				tolerance ISO 2768-m		dim. in mm		scale: 5:1	
				date		name		material: SEE NOTES	
				drawn 23.03.98		Barcinski		title: High Power Contact male Crimp version 10A Hochstromkontaktstift	
				appd. 23.03.98		Mickenbecker			
				norm					
				d-old					
3 x b	Ä3854	19.01.2011	K.H.	CONEC ®		dwg no:		Inventor 10	DIN-A4
a	Origin					part no:		13K11D1A	sh: 1
rev.	description	date	name					131C11019X	



title: High Power Contact male Crimp version 10A Hochstromkontaktstift		dwg no:		Inventor 10	DIN-A4
		part no:		13K11D1A	sh: 1
				131C11019X	

Mouser Electronics

Authorized Distributor

Click to View Pricing, Inventory, Delivery & Lifecycle Information:

[CONEC:](#)

[131C11019X](#)