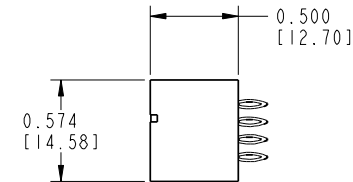
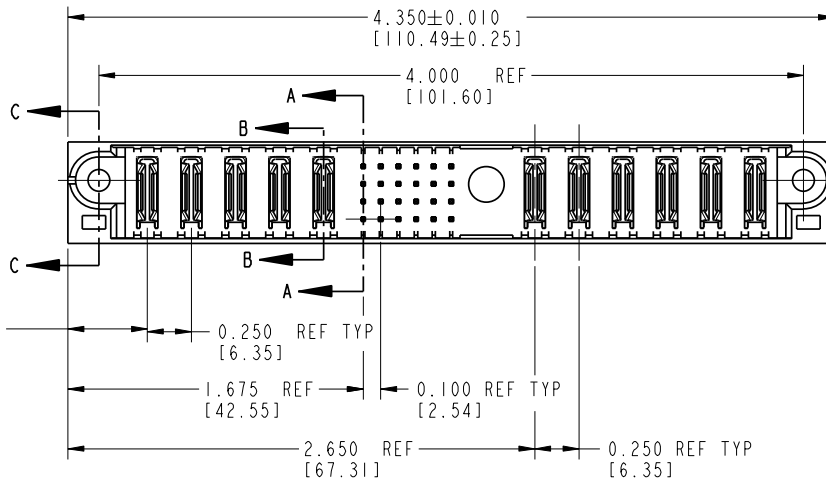
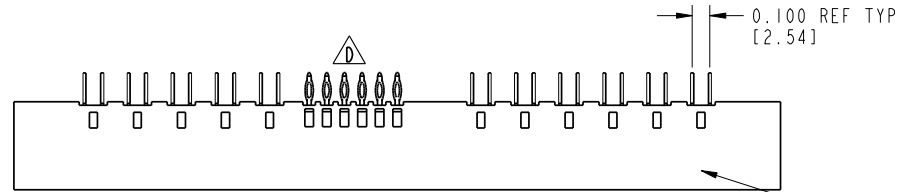


Tous droits strictement réservés. Reproduction ou communication o des liens interdite sous quelque forme que ce soit sans autorisation écrite du propriétaire. Propriete de c FCI. Drois de reproduction FCI.



All rights strictly reserved. Reproduction or issue to third parties in any form whatever is not permitted without written authority from the proprietor. Property of FCI. Copyright FCI.

PRODUCT No.	ROWS	POWER					SIGNAL						POWER								
		E1	P1	P2	P3	P4	P5	1	2	3	4	5	6	MI	P6	P7	P8	P9	P10	P11	E2
51860-002-- NOTE: 3	D C B A		PC	PC	PC	PC	PC	G	G	G	G	G	G		PC	PC	PC	PC	PC	PC	



CODE	DIM "M" ±.010 [0.25]	CONTACT TYPE
G	0.270 [6.86]	SIGNAL
K	0.220 [5.59]	SIGNAL
PC	[N/A] [N/A]	POWER

mat'l code				SEE NOTE 1		tolerances unless otherwise specified		CUSTOMER		FCI		www.fciconnect.com	
ltr	ecn no.	dr	date	linear	.XX±.01/0.X±0.3	projection	COPY		title 5P + 24S + 1M + 6P VERTICAL PRESS-FIT HEADER				
A	V12513	DA1	10/31/01		.XXX±.005/0.XX±0.13		INCH/MM		product family PWRBLADE		code 213		
B	V21104	TAB	09/30/02		.XXX±.0020/0.XXX±0.051		scale 1:1		size dwg no 51860-002		sheet 1 of 3		
C	DG05-0572	JMG	01/05/06	angles	0°±2°	engr J. ALLISON 10/3/01		appd J. ALLISON 10/3/01		cage code 22526			
D	DG07-0357	JC	03/26/08	dr	J. WITMER 10/3/01	chr J. ALLISON 10/3/01							
sheet index		revision sheet	D 1	D 2	D 3								

Pro/E

PDM: Rev:D

STATUS: Released

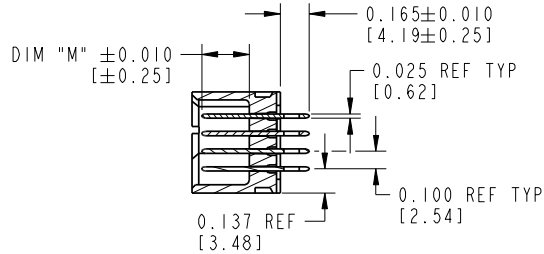
Printed: Dec 20, 2010

Tous droits strictement réservés. Reproduction ou communication o des tiers interdite sous quelque forme que ce soit sans autorisation écrite du propriétaire. Propriété de c FCI. Droits de reproduction FCI.

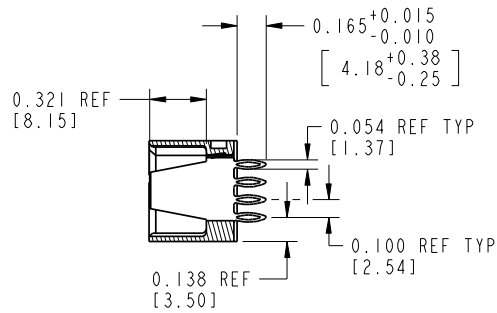


All rights strictly reserved. Reproduction or issue to third parties in any form whatever is not permitted without written authority from the proprietor. Property of FCI. Copyright FCI.

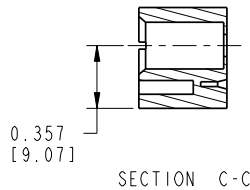
PRODUCT NUMBER  
51860-002\_\_  
NOTE: 2



SECTION A-A



SECTION B-B



SECTION C-C

CONNECTOR NOTES:

1. HOUSING MATERIAL: UL 94 V-0 GLASS FILLED HIGH TEMP THERMOPLASTIC  
POWER CONTACT MATERIAL: COPPER ALLOY  
SIGNAL CONTACT MATERIAL: COPPER ALLOY

2. PLATING:  
SEE PRINT 10064183 FOR PLATING SPEC OF 51860-002; 51860-002LF

3. "MANUFACTURER'S" NAME, P/N, AND DATE CODE TO APPEAR ON THIS SURFACE

4. PRODUCT SPECIFICATION GS-12-149

PCB NOTES:

5. ALL DIMENSIONS ARE BASIC UNLESS OTHERWISE SPECIFIED.

6. ALL THROUGH HOLES ARE LOCATED WITH A TRUE POSITION OF 0.004 [0.10]

7. ALL HOLE DIAMETERS ARE FINISHED HOLE SIZE

8. Ø0.098[2.41] THROUGH HOLES ARE UNPLATED.

9. Ø0.0453±0.0010 [1.151±0.025] DRILLED HOLES PLATED WITH 0.0003 [0.008] MIN SnPb OVER 0.001 [0.03] TO 0.003 [0.08] Cu PLATING TO ACHIEVE A Ø0.040±0.003 [1.02±0.07] HOLE.

10. FOR PRESS FIT APPLICATION USE FCI CAM TOOL 430169-XXX.

11. DIMENSIONS AND TOLERANCES ARE IN ACCORDANCE WITH ASME Y14.5M, 1994 UNLESS OTHERWISE SPECIFIED.

12. A Δ SYMBOL WILL BE NEXT TO ANY DIMENSION, VIEW, OR NOTE WHICH HAS BEEN MODIFIED WITH THE CURRENT DRAWING REVISION.

mat'l code		SEE NOTE 1		tolerances unless otherwise specified		CUSTOMER		FCI		www.fciconnect.com	
lfr	ecn no.	dr	date	linear	.XX±.01/0.X±0.3	COPY		projection		title 5P + 24S + 1M + 6P	
d				angles	.XXX±.005/0.XX±0.13	INCH/MM		product family		VERTICAL PRESS-FIT HEADER	
				dr	.XXX±.0020/0.XX±0.051	scale		PWRBLADE		code	
				engr	0°±2°	1:1		size		213	
				chr	J. WITMER 10/3/01			dwg no		sheet	
				appd	J. ALLISON 10/3/01			51860-002		2	
sheet index	revision sheet										

cage code 22526

Pro/E

PDM: Rev:D

STATUS:Released

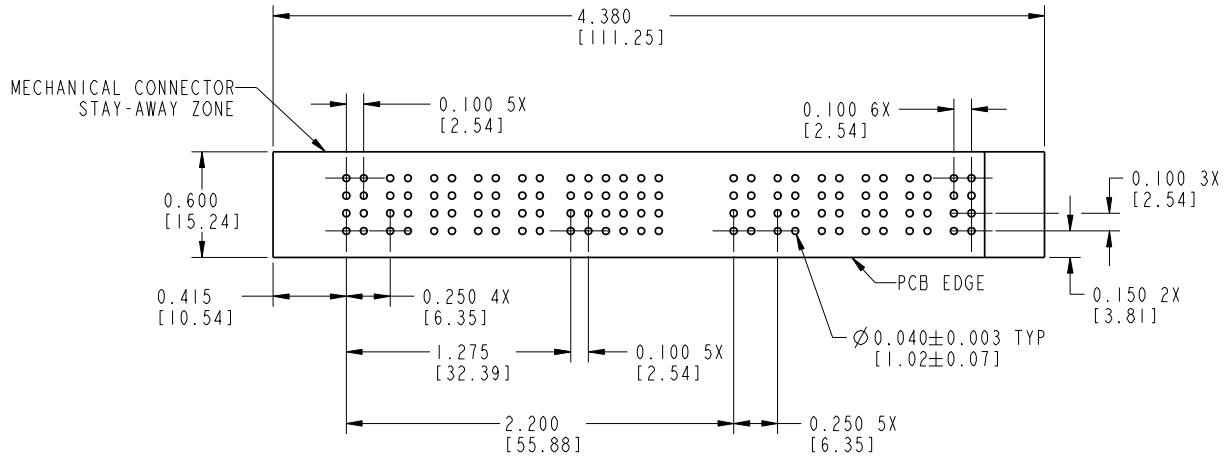
Printed: Dec 20, 2010

Tous droits strictement réservés. Reproduction ou communication o des tiers interdite sous quelque forme que ce soit sans autorisation écrite du propriétaire. Propriété de c FCI. Droits de reproduction FCI.



All rights strictly reserved. Reproduction or issue to third parties in any form whatever is not permitted without written authority from the proprietor. Property of FCI. Copyright FCI.

PRODUCT NUMBER  
51860-002\_\_  
NOTE: 3



RECOMMENDED PCB LAYOUT

mat'l code		SEE NOTE 1		tolerances unless otherwise specified		CUSTOMER		FCI		www.fciconnect.com	
ltr	ecn no.	dr	date	linear	.XX±.01/0.X±0.3	COPY		projection		title 5P + 24S + 1M + 6P	
d				angles	.XXX±.005/0.XX±0.13	INCH/MM		product family		code	
				dr	.XXX±.0020/0.XXX±0.051	scale		PWRBLADE		213	
				engr	0°±2°	1:1		size		sheet	
				chr	J. WITMER 10/3/01			A		3	
				appd	J. ALLISON 10/3/01			51860-002			
sheet index	revision sheet										

cage code 22526

Pro/E

PDM: Rev:D

STATUS: Released

Printed: Dec 20, 2010

# Mouser Electronics

Authorized Distributor

Click to View Pricing, Inventory, Delivery & Lifecycle Information:

[FCI / Amphenol:](#)

[51860-002LF](#) [51860-002](#)