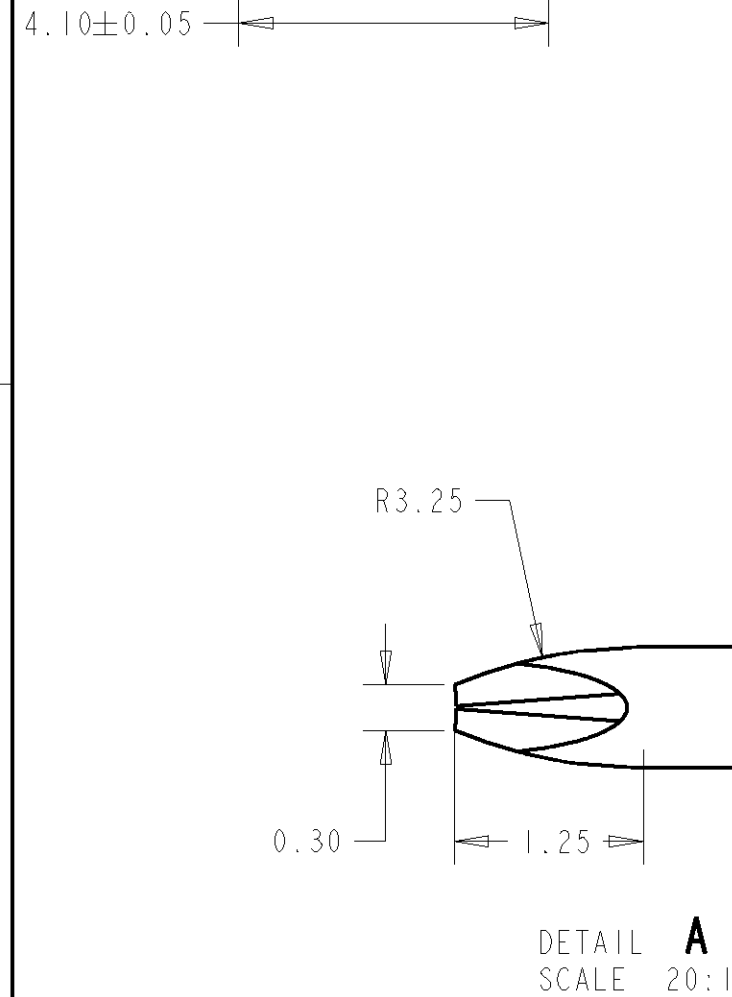
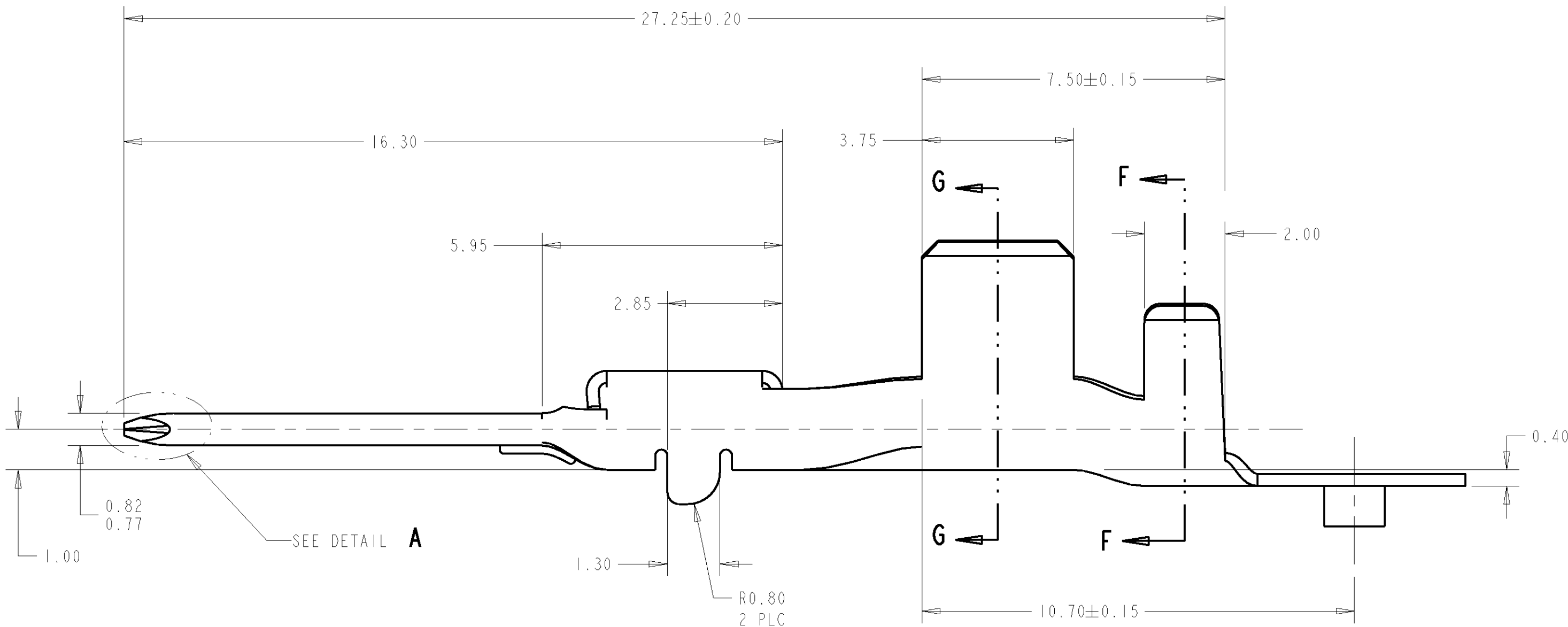


1 MATERIAL: 0.30 THICK COPPER ALLOY, PREPLATED
WITH 0.0008 MINIMUM THICK MATTE TIN (ELV COMPLIANT).



6. LOOSE END SPLICING TO BE USED.



3	1-1326029-0 REELED FOR AMP APPLICATOR						REFERENCE DUAL CRIMP TABLE	1-1326029-2
	1326029-9 REELED FOR AMP APPLICATOR						REFERENCE DUAL CRIMP TABLE	1-1326029-1
2	4.6	1.80	5.35	3.9	1.70	3.88	REFERENCE DUAL CRIMP TABLE	1-1326029-0
	3.6	1.40	4.32	3.3	1.30	2.76	REFERENCE DUAL CRIMP TABLE	1326029-9
3	1326029-4 REELED FOR AMP APPLICATORS						12 AWG	1326029-8
	1326029-3 REELED FOR AMP APPLICATORS						14-16 AWG	1326029-7
	1326029-2 REELED FOR AMP APPLICATORS						18-20 AWG	1326029-6
	1326029-1 REELED FOR AMP APPLICATORS						22 AWG	1326029-5
2	5.2	3.20	4.22	4.7	2.70	5.25	12 AWG	1326029-4
	3.8	1.80	3.16	3.9	1.70	3.88	14-16 AWG	1326029-3
	3.1	1.40	2.55	3.3	1.30	2.76	18-20 AWG	1326029-2
	2.6	1.00	2.04	2.5	0.90	2.11	22 AWG	1326029-1
REELING	L	ØK	J	H	ØF	E	WIRE SIZE	PART NO.

<small>THIS DRAWING IS THE PROPERTY OF AMP ELECTRONICS. IT IS TO BE USED FOR THE SPECIFIC PART AND QUANTITY INDICATED. IT IS NOT TO BE REPRODUCED OR COPIED IN ANY MANNER WITHOUT THE WRITTEN PERMISSION OF AMP ELECTRONICS. IT IS TO BE RETURNED TO THE ORIGINATOR WHEN NO LONGER REQUIRED. IT IS TO BE DESTROYED WHEN NO LONGER REQUIRED. IT IS TO BE KEPT IN A SAFE PLACE AND NOT BE LOST OR MISPLACED. IT IS TO BE KEPT IN A SAFE PLACE AND NOT BE LOST OR MISPLACED. IT IS TO BE KEPT IN A SAFE PLACE AND NOT BE LOST OR MISPLACED.</small>		DWN <u>D. STRAUSSER</u> 27APR99 CHW <u>D. BROWN</u> 27APR99 APV <u>D. BROWN</u> 27APR99		AMP Tyco Electronics Harrisburg, PA 17105-3608	
DIMENSIONS: UNLESS OTHERWISE SPECIFIED: mm		TOLERANCES, UNLESS OTHERWISE SPECIFIED: 0 PLC \pm .010 1 PLC \pm .020 2 PLC \pm .040 3 PLC \pm .050 4 PLC \pm .075 ANGLES \pm $^{\circ}$ 90		NAME 2.8mm BLADE, UNSEALED	
		PRODUCT SPEC SAE/J58CAR-2 8/97		APPLICATION SPEC 114-13013	
MATERIAL		FINISH		SIZE CASE CODE DRAWING NO A 00779 C=1326029	
CUSTOMER DRAWING		WEIGHT -		RESTRICTED TO -	
SCALE 10:		SHEET 1 OF 1		REV G	

Mouser Electronics

Authorized Distributor

Click to View Pricing, Inventory, Delivery & Lifecycle Information:

[TE Connectivity:](#)

[1326029-2 \(Loose Piece\)](#)