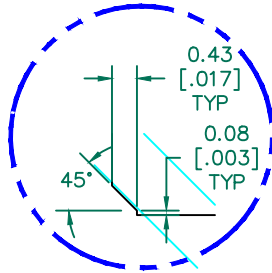


SEE DETAIL "A" SECTION A-A

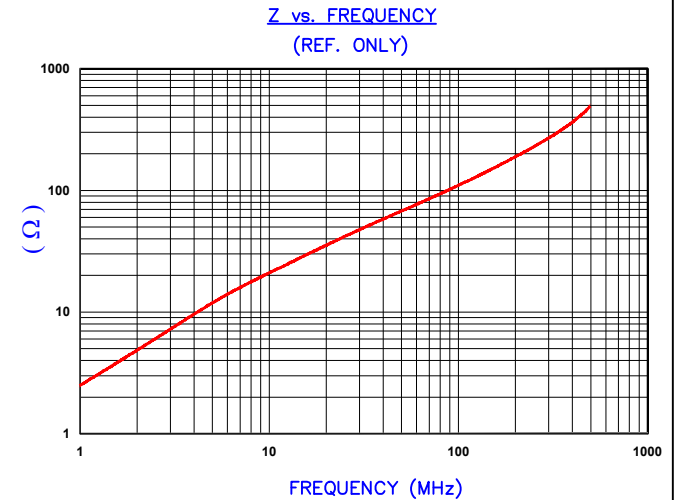


DETAIL "A"
CHAMFER
SCALE=8:1

UNCONTROLLED DOCUMENT



IMPEDANCE (Z)			
Frequency	25 MHz	100 MHz	300 MHz
Nominal (REF)	40 Ω	110 Ω	265 Ω
Minimum	- Ω	88 Ω	- Ω



AGILENT E4991A Impedance/Material Analyzer
HP 16092A Test Fixture, REF #3843

FERRITE CORE DIMENSIONS (SPEC):mm[Inches]

A	28.58 [1.125]	+	0.50 [.020]
B	23.50 [.925]	+	0.50 [.020]
C	9.70 [.382]	+	0.20 [.008]
D	7.70 [.303]	+	0.50 [.020]
E	1.70 [.067]	-	0.38 [.015]

WEIGHT/1000 7.92 kgs [17.46 Lbs]

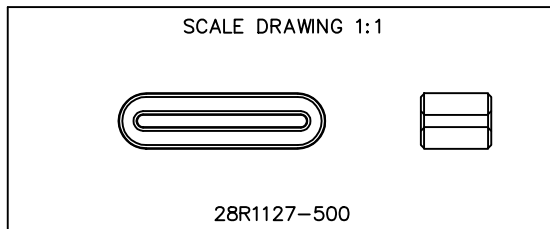
NOTES: UNLESS OTHERWISE SPECIFIED

1. COSMETIC SPECIFICATION REFER TO WI-QA-038.

NOTES: UNLESS OTHERWISE SPECIFIED

1. PARTS NEED TO BE CLEANED WITH NO FERRITE RESIDUE LEFT ON THE SURFACE OF THE PARTS.

THIS MAY REQUIRE SPECIAL HANDLING, PACKAGING, WASHING, OR WIPING.



DIMENSIONS ARE IN mm[INCHES].				This print is the property of Laird Tech. and is loaned in confidence subject to return upon request and with the understanding that no copies shall be made without the written consent of Laird Tech. All rights to design or invention are reserved.					
REV	DESCRIPTION	DATE	INT						
H	UPDATE COMPANY LOGO	01/02/13	QIU	PROJECT/PART NUMBER: 28R1127-500 DATE: 04/18/00 SCALE: 2 : 1 CAD # 28R1127-500-H TOOL # R1127		REV	H	DRAWN BY:	JRK
G	UPDATE MIN Z SPEC AND COMPANY LOGO	07/27/07	JRK						
F	ADD NOTE # 1	03/16/06	JRK						
E	UPDATE Z SPECS & CURVE, ADD REF# TO CURVE	01/19/04	JRK						
D	UPDATE ELECT SPECS & CURVE UPDATE FORMAT REM NOTE 1 CHG TOLS ON E	02/25/03	JRK						
C	UPDATE TO CNZ FORMAT ADD Z CURVE	06/20/02	JRK						
B	UPDATE Z SPECS, REM MAX, ADD NOTE	03/13/02	JRK						
A	ORIGINAL DRAFT	05/02/01	JRK						
REV	DESCRIPTION	DATE	INT						
								MATERIAL:	FERRITE

Mouser Electronics

Authorized Distributor

Click to View Pricing, Inventory, Delivery & Lifecycle Information:

Laird:

[28R1127-500](#)