

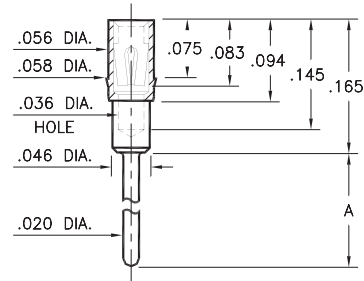
# PIN RECEPTACLES

FOR .015" - .025" DIAMETER PINS

## 1802/3802/4030/8866

XXXX-0-15-XX-43-XX-04-0

Press-fit in .057 mounting hole

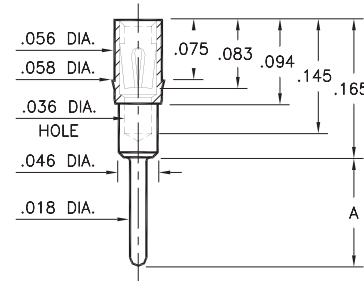


Basic Part Number	Length A
1802-0	.125
3802-0	.165
8866-0	.775
4030-0	.815

## 1803/1805/1808/3805

XXXX-0-15-XX-XX-XX-04-0

Press-fit in .057 mounting hole

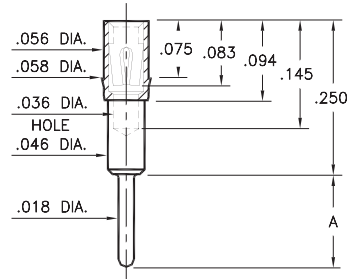


Basic Part Number	Length A
1808-0	.100
1803-0	.145
1805-0	.213
3805-0	.393

## 1804/1806

180X-0-15-XX-43-XX-04-0

Press-fit in .057 mounting hole

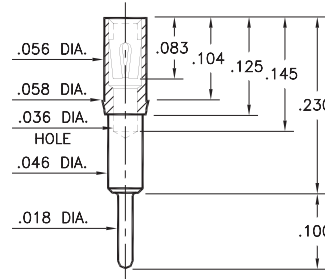


Basic Part Number	Length A
1804-0	.080
1806-0	.115

## 1807

1807-0-15-XX-43-XX-04-0

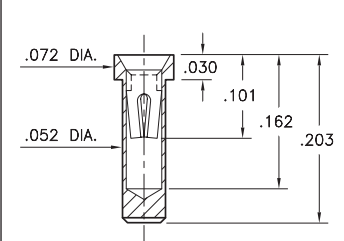
Press-fit in .057 mounting hole



## 4728

4728-15-XX-30-XX-10-0

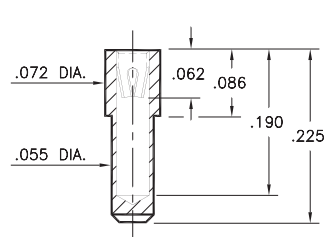
Solder mount in .054 min. mounting hole



## 8830

8830-15-XX-22-XX-10-0

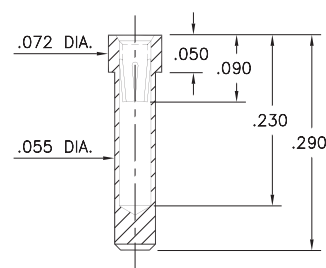
Solder mount in .057 min. mounting hole



## 8363

8363-0-15-XX-35-XX-10-0

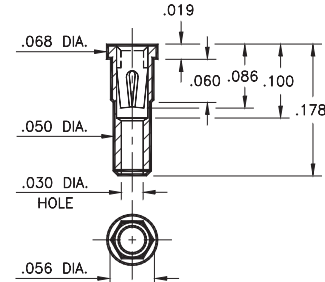
Solder mount in .057 min. mounting hole



## 4622

4622-0-15-XX-30-XX-10-0

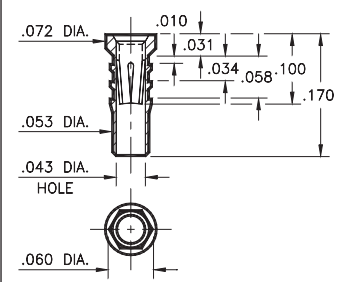
Hex press-fit in .053 plated through-hole



## 6252

6252-0-15-XX-32-XX-10-0

Hex press-fit in .057 plated through-hole



### SPECIFICATIONS:

Shell Material: Brass Alloy 360, 1/2 Hard

Contact Material: Beryllium Copper Alloy 172, HT

Dimensions: Inches

Tolerances On: Lengths: ±.005

Diameters: ±.002

Angles: ± 2°



ORDER CODE: **XXXX - X - 15 - XX - XX - XX - XX - 0**

BASIC PART #

SPECIFY SHELL FINISH:

01 200 μ" TIN/LEAD OVER NICKEL

◆ 80 200 μ" TIN OVER NICKEL (RoHS)

◆ 15 10 μ" GOLD OVER NICKEL (RoHS)

SPECIFY CONTACT FINISH:

02 100 μ" TIN/LEAD OVER NICKEL

◆ 84 100 μ" TIN OVER NICKEL (RoHS)

◆ 27 30 μ" GOLD OVER NICKEL (RoHS)

SELECT CONTACT:

#22, #30, #32 or #43 CONTACT (DATA ON PAGES 252, 253 & 254)

(For alternate contact choices, see groups B and C on page 248)



# Mouser Electronics

Authorized Distributor

Click to View Pricing, Inventory, Delivery & Lifecycle Information:

[Mill-Max:](#)

[8363-0-15-01-35-27-10-0](#) [6252-0-15-80-32-84-10-0](#) [6252-0-15-80-32-27-10-0](#) [6252-0-15-15-32-27-10-0](#) [8363-0-15-15-35-27-10-0](#) [4728-0-15-80-30-27-10-0](#)