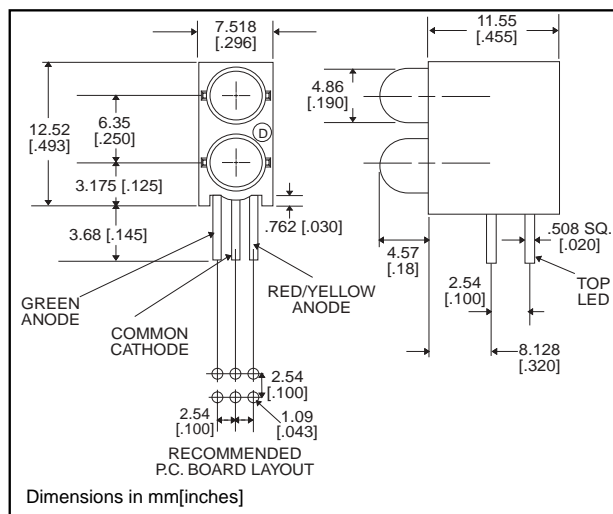


5mm

# LED CBI® Circuit Board Indicator 3 Leaded, Bi-Color, Bi-Level

# Dialight

## 552-35xx



### PART NO.

552-3511

552-3544

### COLOR\*

Red/Green

Yellow/Green

\* Top-Bottom LED

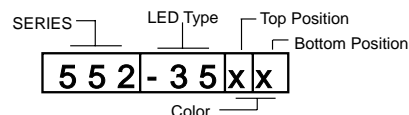
### Features

- Common Cathode simplifies design, and the red/green LED provides yellow-orange as a third color
- Multiple CBIs form horizontal LED arrays on 7.62mm (0.300") center-lines.
- High Contrast, UL 94 V-0 rated, black housing
- Oxygen index: 32%
- Polymer content: PBT, 1.055 g
- Housing stand-offs facilitate PCB cleaning
- Solderability per MIL-STD-202F, method 208F
- LEDs are safe for direct viewing per IEC 825-1, EN-60825-1

### Tolerance note: As noted, otherwise:

- LED Protrusion:  $\pm 0.04$  mm [ $\pm 0.016$ ]
- CBI Housing:  $\pm 0.02$ mm [ $\pm 0.008$ ]

### PART NUMBER ORDERING CODE



0) Blank 1) Red/Green Bi-color 4) Yellow/Green Bi-color

### Typical Operating Characteristics ( $T_A = 25^\circ\text{C}$ )

See LED data sheet for additional information

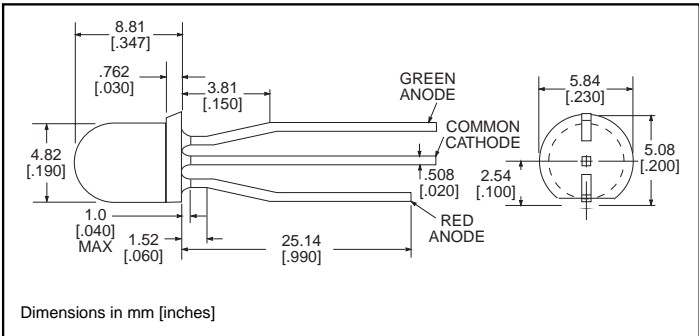
See page 6-55 and 6-56 for Reference Only LED Drive Circuit Examples. See page 6-57 for Pin Out

Part Number	Color	Peak Wavelength nm	I <sub>v</sub> mcd	V <sub>F</sub> Volts	Test Current (mA)	Viewing Angle 2 $\theta$ %	LED Data sheet	Page #
552-3511	Red/Green	635/565	5/8	2.1/2.3	10	65°	521-9450	6-45
552-3544	Yellow/Green	583/565	5/8	2.1/2.1	10	65°	521-9460	6-45

5mm Discrete LED  
Bi-Color  
3 Ledged, Non-Tinted, Diffused

Dialight

521-9450, -9460



PART NO.

LED COLOR

521-9450

Red/Green

521-9460

Yellow/Green

NEW

MOUNTING CLIP: 515-0004  
located on page 6-48

**ABSOLUTE MAXIMUM RATINGS** ( $T_A=25^\circ\text{C}$ )

	Red/Green -9450	Yellow/Green -9460
Power Dissipation (mW)	135/135	135/135
Forward Current (mA)	25/25	25/25
Derating (mA/°C) From 50°C 1. From 40°C	.5/.5	.5/.5
Peak Current (mA)	90/90	90/90
Pulse width = 10 $\mu\text{s}$		
Operating Temperature (°C)	-20/+85	-20/+85
Storage Temperature (°C)	-55/+100	-55/+100
Soldering Temperature	260°C, 5 seconds, 1.6 mm from case	

Solder Adherence per MIL-STD-202E, Method 208C

**OPERATING CHARACTERISTICS** ( $T_A=25^\circ\text{C}$ )

		Red/Green -9450	Yellow/Green -9460
Luminous Intensity (mcd)	Min.	2.1/4.2	2.1/4.2
$I_F=10\text{mA}$	Typical	5/8	5/8
Peak Wavelength (nm)	Typical	635/565	583/565
$\lambda_{\text{Peak}}$			
Viewing Angle ( $2\theta_{\frac{1}{2}}$ )	Typical	65°	65°
Forward Voltage (V)	Typical	2.1/2.3	2.1/2.1
$I_F=10\text{mA}$	Max.	2.5/2.7	2.5/2.5

$\theta_{\frac{1}{2}}$  is the off axis angle at which the luminous intensity is half the axial luminous intensity

# Mouser Electronics

Authorized Distributor

Click to View Pricing, Inventory, Delivery & Lifecycle Information:

Dialight:

[552-3511](#) [552-3511F](#) [552-3544](#)