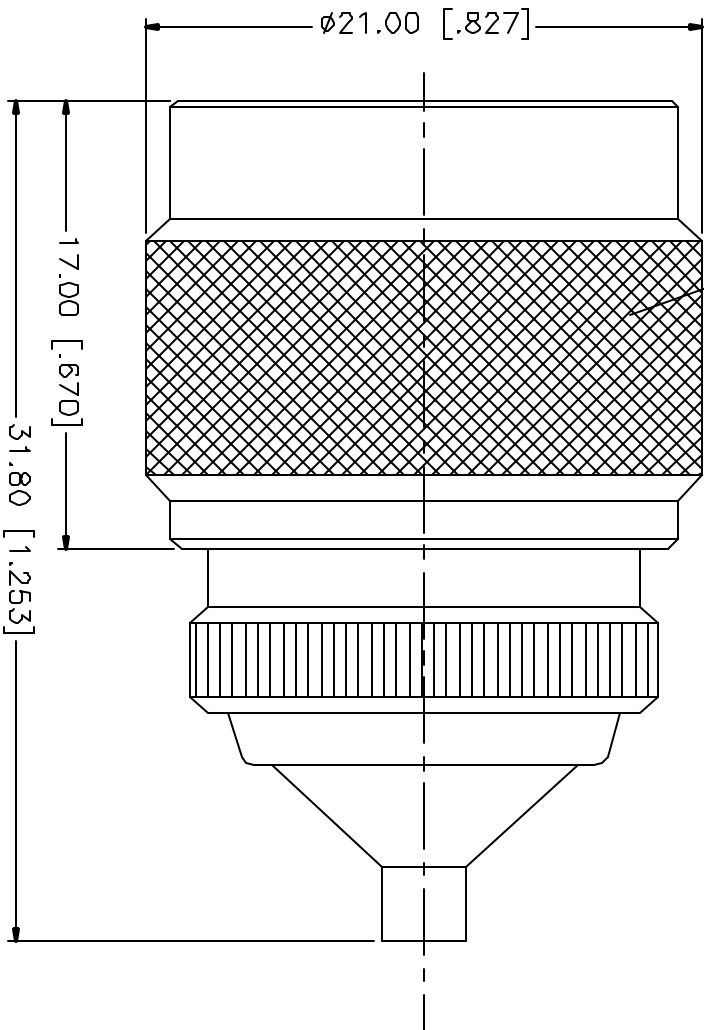
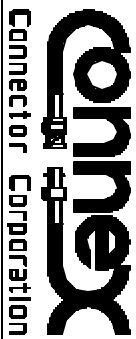


REV.	DATE	DESCRIPTION
NC	10/31/01	INITIAL RELEASE

5/8-24UNEF-2B (INTERNAL)



DESCRIPTION	MATERIAL	FINISH	UNLESS OTHERWISE SPECIFIED DIMENSIONS ARE IN MILLIMETERS FOR CUSTOMER REFERENCE ONLY	APPROVALS	DATE	TITLE	SIZE	FROM NO.	DWG. NO.	REV.	
1 BODY	BRASS	NICKEL	UNLESS OTHERWISE SPECIFIED DIMENSIONS ARE IN MILLIMETERS FOR CUSTOMER REFERENCE ONLY UNLESS OTHERWISE SPECIFIED TOLERANCES FOR MILLIMETERS ARE: 0.5-6 = ± 0.2 6-30 = ± 0.4 30-120 = ± 0.6 120-315 = ± 1 315-1000 = ± 1.6 1000-2000 = ± 2.4	DRAWN	10/31/01	N PLUG TO MCX JACK ADAPTOR	A	99001	242170	NC	
2 INSULATOR	TEFLON	NATURAL		CHECKED	G.R.S.			NA	242170		
3 CONTACT PIN	BER. COPPER	GOLD		ISSUED							
4 GASKET	SILICONE	RED									
5											
6											
7											
8				DO NOT SCALE DRAWING							



N PLUG TO MCX JACK ADAPTOR

SCALE NA PART NO. 242170 SHEET 1 OF 1

Mouser Electronics

Authorized Distributor

Click to View Pricing, Inventory, Delivery & Lifecycle Information:

[Amphenol:](#)

[242170](#)