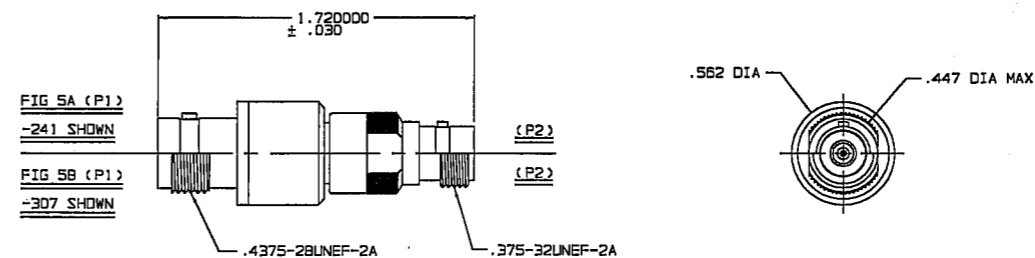
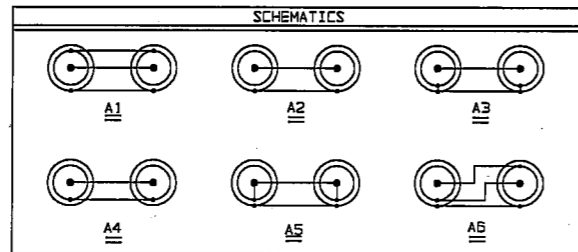
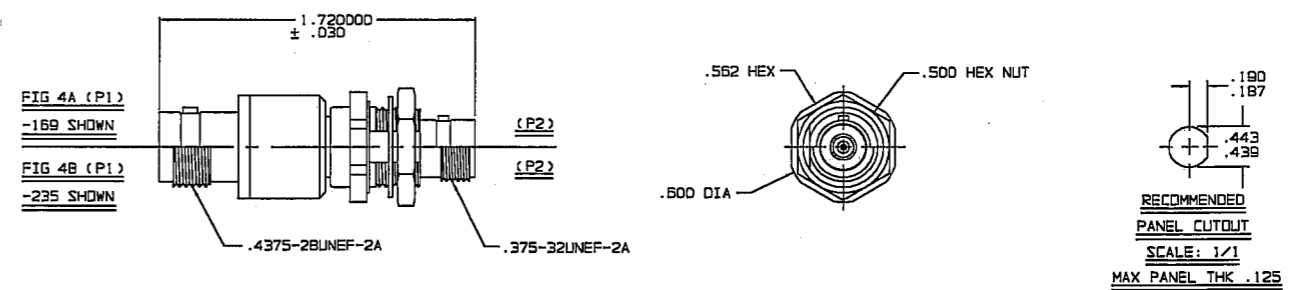
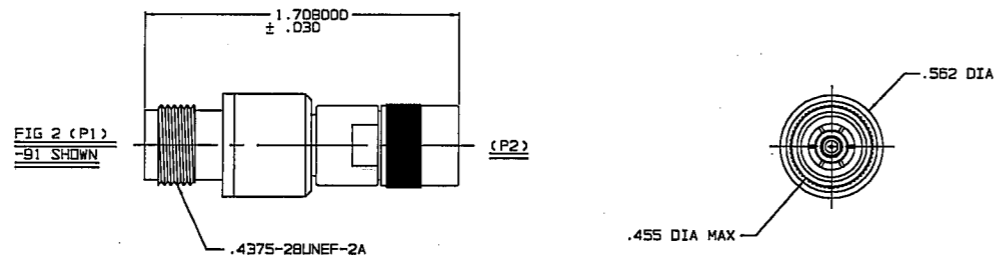
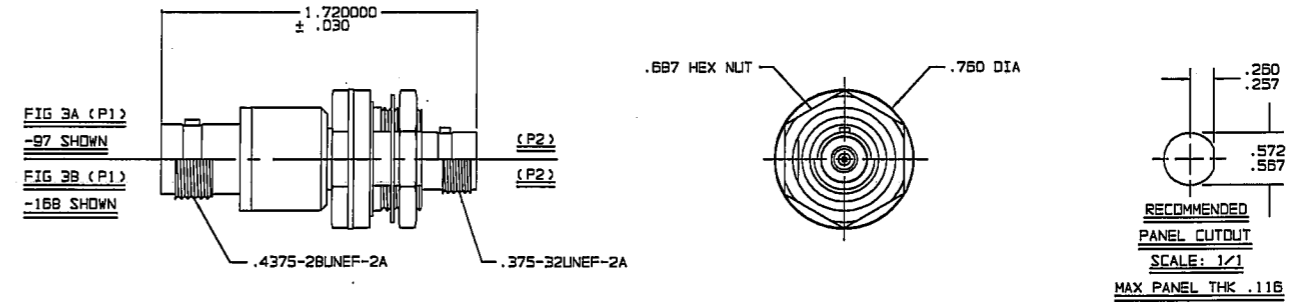
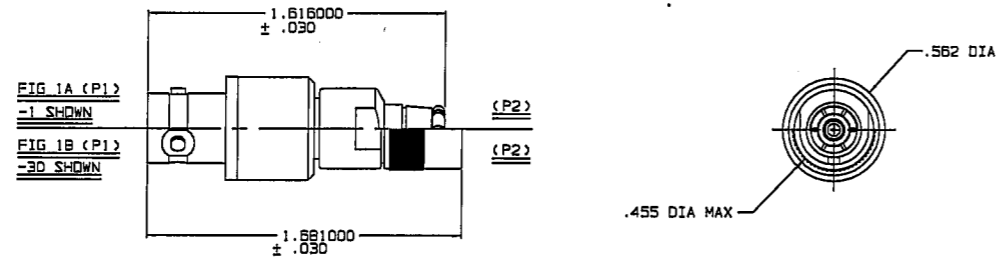


P2 CONN TYPE	FIG NO	P1 CONN TYPE																							
		BJ77						BJ77TL						BJ77FL						BJ377					
		A1	A2	A3	A4	A5	A6	A1	A2	A3	A4	A5	A6	A1	A2	A3	A4	A5	A6	A1	A2	A3	A4	A5	A6
PL153	1A	-1	-2	-3	-4	-5	-6	-7	-8	-9	-10	-11	-12	-13	-14	-15	-16	-17	-18	-19	-20	-21	-22	-23	-24
PL155	1B	-25	-26	-27	-28	-29	-30	-31	-32	-33	-34	-35	-36	-37	-38	-39	-40	-41	-42	-43	-44	-45	-46	-47	-48
PL155FL	1B	-49	-50	-51	-52	-53	-54	-55	-56	-57	-58	-59	-60	-61	-62	-63	-64	-65	-66	-67	-68	-69	-70	-71	-72
PL3155	2	-73	-74	-75	-76	-77	-78	-79	-80	-81	-82	-83	-84	-85	-86	-87	-88	-89	-90	-91	-92	-93	-94	-95	-96
BJ154	3A	-97	-98	-99	-100	-101	-102	-103	-104	-105	-106	-107	-108	-109	-110	-111	-112	-113	-114	-115	-116	-117	-118	-119	-120
BJ154FL	3A	-121	-122	-123	-124	-125	-126	-127	-128	-129	-130	-131	-132	-133	-134	-135	-136	-137	-138	-139	-140	-141	-142	-143	-144
BJ3154	3B	-145	-146	-147	-148	-149	-150	-151	-152	-153	-154	-155	-156	-157	-158	-159	-160	-162	-163	-164	-165	-166	-167	-168	-169
BJ159	4A	-169	-170	-171	-172	-173	-174	-175	-176	-177	-178	-179	-180	-181	-182	-183	-184	-185	-186	-187	-188	-189	-190	-191	-192
BJ159FL	4A	-193	-194	-195	-196	-197	-198	-199	-200	-201	-202	-203	-204	-205	-206	-207	-208	-209	-210	-211	-212	-213	-214	-215	-216
BJ3159	4B	-217	-218	-219	-220	-221	-222	-223	-224	-225	-226	-227	-228	-229	-230	-231	-232	-233	-234	-235	-236	-237	-238	-239	-240
CJ150	5A	-241	-242	-243	-244	-245	-246	-247	-248	-249	-250	-251	-252	-253	-254	-255	-256	-257	-258	-259	-260	-261	-262	-263	-264
CJ150FL	5A	-265	-266	-267	-268	-269	-270	-271	-272	-273	-274	-275	-276	-277	-278	-279	-280	-281	-282	-283	-284	-285	-286	-287	-288
CJ3150	5B	-289	-290	-291	-292	-293	-294	-295	-296	-297	-298	-299	-300	-301	-302	-303	-304	-305	-306	-307	-308	-309	-310	-311	-312

DATA CONTAINED IN THIS DOCUMENT IS PROPRIETARY TO TROMPETER ELECTRONICS INC. AND SHALL NOT BE DISCLOSED, COPIED OR USED FOR PROCUREMENT OR MANUFACTURE WITHOUT EXPRESS WRITTEN PERMISSION OF TROMPETER ELECTRONICS INC.

REVISIONS		22-16	SH 1
REV	DESCRIPTION	DATE	APPROVED
B	REVISED PER ECD 15783	2-18-05	<i>[Signature]</i>

RED INDICATES ORIGINAL



- EXAMPLE OF COMPLETE MODEL NO:  
AD - BJ77 - A1 - PL153  
ADAPTER (P1) CONN TYPE (P2) CONN TYPE SCHEMATIC
- EXAMPLE OF COMPLETE PART NO:  
22-16-1  
BASIC PART NO DASH NO
- BETWEEN SERIES ADAPTER, 2/3-4-LUG & THREADED CONCENTRIC TWINAX/TRIAX TRB & TRT TYPE TO COMPLETE "150" SERIES
- FINISH: TFS-1A (NICKEL)
- ALL DIM ARE IN INCHES

INTERPRET DRAWING PER MIL-STD-100 DIMENSIONS ARE IN INCHES AND INCLUDE FINISH THICKNESS UNLESS OTHERWISE SPECIFIED	TOL: UNLESS SPECIFIED .XX .XXX ± .005 .XXXX ANGLES	<b>TROMPETER</b> ELECTRONICS, INC.	
DRAWN: AAH CHECKED: AD DATE: 2-17-05 QUALITY: HS HAND: BP APPROVED: [Signature] DATE: 2/18/05 CAD FILE NO: 22-158	MATERIAL: FINISH: DO NOT SCALE DWG		TITLE: ADAPTERS BJ77/TL/FL/377 TO COMPLETE "150" SERIES
NEXT ASSY	SIZE: B CAGE CODE: 14949 SCALE: 2/1	DRAWING NO.: 22-16 DATE: 1/30/87	REV. B SHEET 1C

# Mouser Electronics

Authorized Distributor

Click to View Pricing, Inventory, Delivery & Lifecycle Information:

[Cinch Connectivity Solutions:](#)

[BJ159FL-47](#)