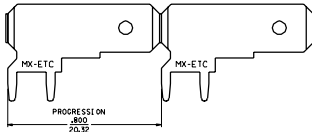
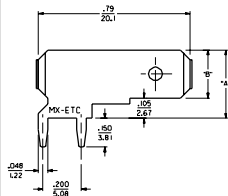
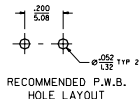
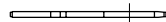


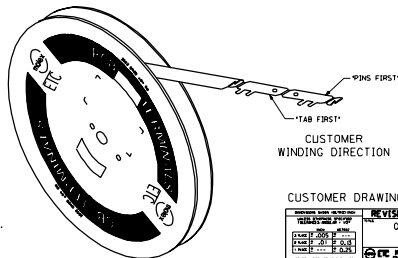
PIN ORIENTATION	MATERIAL NUMBER	ENGINEERING NUMBER	CUSTOMER NUMBER	CARRIER	SEE PLATING NOTE 6 & 7.	DIMENSION 'A'	DIMENSION 'B'
*TAB FIRST*	197134001	19713-4001	4000	LOOSE	TIN/LEAD	.355	.250
*TAB FIRST*	197134003	19713-4003	-	STRIP	TIN/LEAD	.355	.250
*PINS FIRST*	197134004	19713-4004	-	STRIP	TIN/LEAD	.355	.250



ISOMETRIC VIEW



- NOTES:
1. BARE EDGES PERMISSIBLE AT CARRIER CUT OFF.
  2. MATERIAL: BRASS.
  3. MATERIAL THICKNESS: .032  $\pm$  .001/0.813  $\pm$  .0031
  4. TAB CONFORMS TO NEMA SPECIFICATIONS.
  5. ALL DIMENSIONS AND NOTES ARE REFERENCE ONLY UNLESS NOTED.
  6. PLATING: 90/10 TIN LEAD 150M INCHES MIN THICKNESS.
  7. FINISH MATTE



F	CHANGED FINISH ETC 05/21/2000
E	FINISH CHANGE ETC 05/21/2000
D	ADDED ORIENTATION ETC 05/21/2000
C	ADD PART NO. ETC 05/21/2000
B	REMOVE NON-PLATED PARTS FROM CARRIER
A	RELEASE TO ETC 05/21/2000

CUSTOMER DRAWING

REVISIONS LTR.	
REVISE ONLY ON CAD SYSTEM QUICK DISCONNECT PCB MOUNTABLE .250 X .032 TAB	
DATE: JUN 1994 BY: RWD CHECK: SC	PART NO. 19713-4000 QTY: 1 OF 1 DATE: 06/04/98 BY: RWD

# Mouser Electronics

Authorized Distributor

Click to View Pricing, Inventory, Delivery & Lifecycle Information:

Molex:

19713-4006