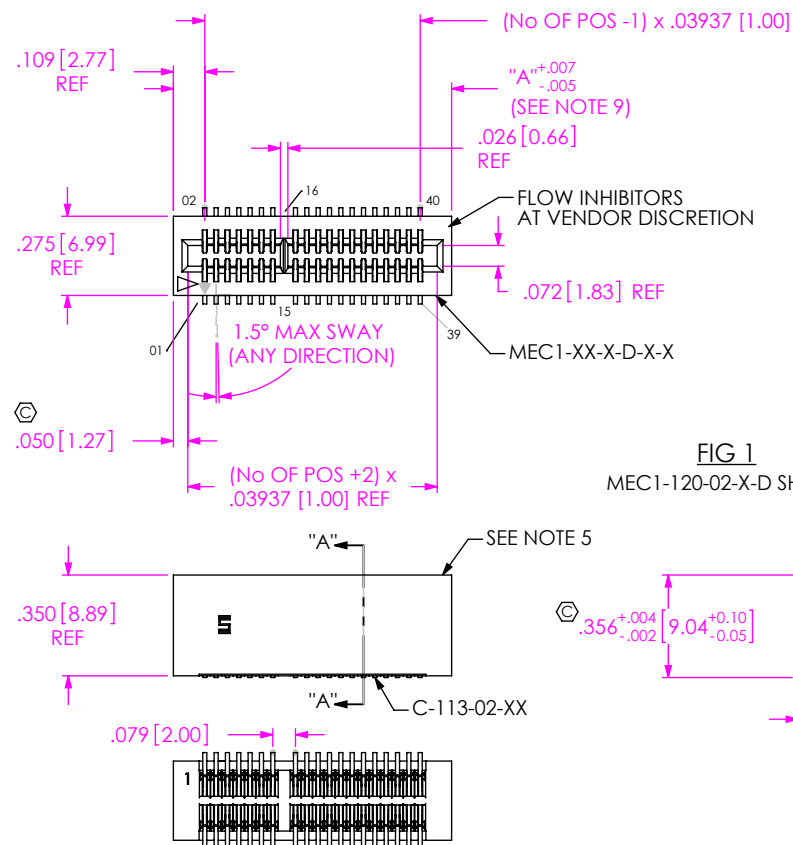


DO NOT
SCALE FROM
THIS PRINTFIG 1
MEC1-120-02-X-D SHOWN

MEC1-1XX-XX-XX-D-XX-XX

NO OF POSITIONS
05, 08, 10, 20, 30, 40, 50, 60 & 70
(PER ROW, SEE TABLE 1)

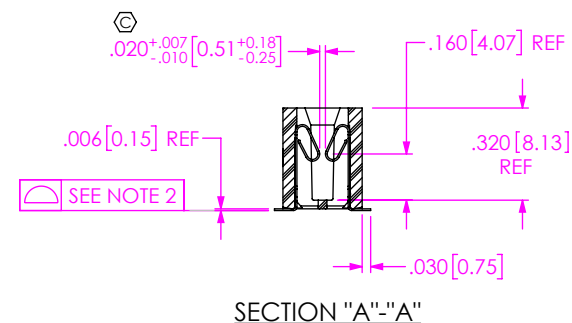
CARD THICKNESS
-02: .062 [1.58] THICK CARD
(USE MEC1-XX-S-D-X-X)

PLATING SPECIFICATION
-F: 3μ" FLASH GOLD IN CONTACT AREA,
MATTE TIN ON TAIL
-L: 10μ" LIGHT GOLD IN CONTACT AREA,
MATTE TIN ON TAIL
-S: 30μ" SELECTIVE GOLD IN CONTACT AREA,
MATTE TIN ON TAIL
-FM: 3μ" FLASH GOLD IN CONTACT AREA,
MATTE ON TIN TAIL
-LM: 10μ" LIGHT IN CONTACT AREA,
MATTE TIN ON TAIL
-SM: 30μ" SELECTIVE GOLD IN CONTACT AREA,
MATTE TIN ON TAIL

OTHER OPTIONS
-LC: LOCKING CLIP (SEE NOTE 8)
(SEE FIG 2)(USE LC-05-TM)
-A: ALIGNMENT PIN
(MOLDED, SEE FIG 4, SHT 2)
(USE MEC1-XX-X-D-X-A)
-K: POLYIMIDE FILM PAD
(SEE FIG 6, SHT 2)(USE K-DOT-.310-.406-.005)
-TR: TAPE & REEL PACKAGING
(N/A IN 70 POSITION)(SEE FIG 5, SHT 2)
(SEE NOTE 10)
-FR: FULL REEL QTY. TAPE & REEL
(N/A IN 70 POSITION)(SEE NOTE 11)

POLARIZED OPTION (SEE TABLE 1)
-BLANK: BODY IS POLARIZED
-NP: NO POLARIZATION (-05 THRU -30 ONLY)
(USE MEC1-XX-X-D-N-X)

ROW SPECIFICATION
-D: DOUBLE ROW
(USE MEC1-XX-X-D-X-X)



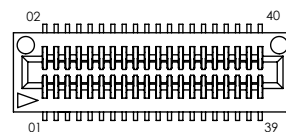
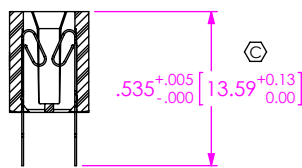
SECTION "A"-"A"

TABLE 1

No OF POS	POSITIONS POLARIZED	"A"
-05	3, 4	.3756 +.007/- .005
-08	5, 6	.4937 +.007/- .005
-10	13 & 14	.5724 +.007/- .005
-20	15, 16	.9661 +.007/- .005
-30	21, 22	1.3598 +.007/- .005
-40	31, 32	1.7535 REF
-50	41, 42	2.1472 REF
-60	31, 32, 63 & 64	2.5409 REF
-70	53, 54, 115 & 116	2.9346 REF

NOTES:

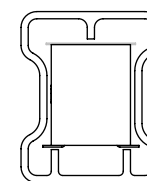
1. MINIMUM PUSHOUT FORCE: 10 oz.
2. COPLANARITY: POS -05 THRU -26: .004 [.10]
POS -27 THRU -70: .006 [.15]
3. Ⓢ REPRESENTS A CRITICAL DIMENSION.
4. PACKAGE ALL POSITIONS IN TUBES UNLESS -TR OR -FR.
5. MAXIMUM CUT FLASH: .010; FLASH NOT TO EXTEND BELOW LEADS.
6. MAXIMUM ALLOWABLE BOW: .002 INCH/INCH AFTER ASSEMBLY.
7. MAXIMUM BURR: .003[.08], BURR DIRECTION TO BE OPPOSITE OF SOLDER PAD AREA
8. DUE TO THE HIGH AMOUNT OF INSERTION FORCE NEEDED, THE -LC OPTION IS NOT COMPATIBLE WITH AUTO PLACEMENT. SAMTEC RECOMMENDS MANUAL PLACEMENT FOR ALL ASSEMBLIES WITH THE -LC OPTION.
9. C1, OVERALL LENGTH, IS ONLY CONTROLLED BY THIS PRINT FOR CUT-TO-POSITION PARTS. FOR MOLDED-TO-POSITION PARTS, REFERENCE THE COMPONENT PRINT.
10. -TR OPTION ORDERS INVOLVING PARTIAL REEL QUANTITIES MAY BE PACKAGED ACCORDING TO THE SAMTEC PACKAGING EFFICIENCY STANDARDS (SPES) FOUND ON WWW.SAMTEC.COM.
11. -FR OPTIONS WILL BE SHIPPED AT THE MAX QUANTITY PER REEL, BASED ON OPTIONS SELECTED.

IN-PROCESS
(FILL STEP)

MEC1-XX-X-D-N-X

-NP: NON-POLARIZED OPTION
(AVAILABLE ON -05, -08, -10, -20 & -30 POS. ONLY)
(SHOWN: MEC1-120-02-X-D-NP)

PACKAGING VIEW



TUBE: PT-MEC1001
PLUG: TP-29

UNLESS OTHERWISE SPECIFIED,
DIMENSIONS ARE IN INCHES.

TOLERANCES ARE:

DECIMALS ANGLES
.XX: ±.01 [.3] 2°
.XXX: ±.005 [.13]
.XXXX: ±.0015 [.038]

* PROPRIETARY NOTE *

THIS DOCUMENT CONTAINS CONFIDENTIAL AND PROPRIETARY INFORMATION AND ALL DESIGN, MANUFACTURING, REPRODUCTION, USE, PATENT RIGHTS AND SALES RIGHTS ARE EXPRESSLY RESERVED BY SAMTEC, INC. THIS DOCUMENT SHALL NOT BE DISCLOSED, IN WHOLE OR PART, TO ANY UNAUTHORIZED PERSON OR ENTITY NOR REPRODUCED, TRANSFERRED OR INCORPORATED IN ANY OTHER PROJECT IN ANY MANNER WITHOUT THE EXPRESS WRITTEN CONSENT OF SAMTEC, INC.

MATERIAL: DO NOT SCALE DRAWING SHEET SCALE: 1.5:1

INSULATOR:
VECTRA E130i COLOR: BLACK

CONTACT:
BeCu 190 HM

F:\DWG\MISC\MKTG\MEC1-1XX-XX-XX-D-XX-XX-MKT.SLDDRW

samtec

520 PARK EAST BLVD, NEW ALBANY, IN 47150
PHONE: 812-944-6733 FAX: 812-948-5047
e-Mail: info@SAMTEC.com code: 55322

DESCRIPTION:

1mm MINI-EDGE CARD ASSEMBLY

DWG. NO.

MEC1-1XX-XX-XX-D-XX-XX

BY: KEVIN B

5/11/2000

SHEET 1 OF 2

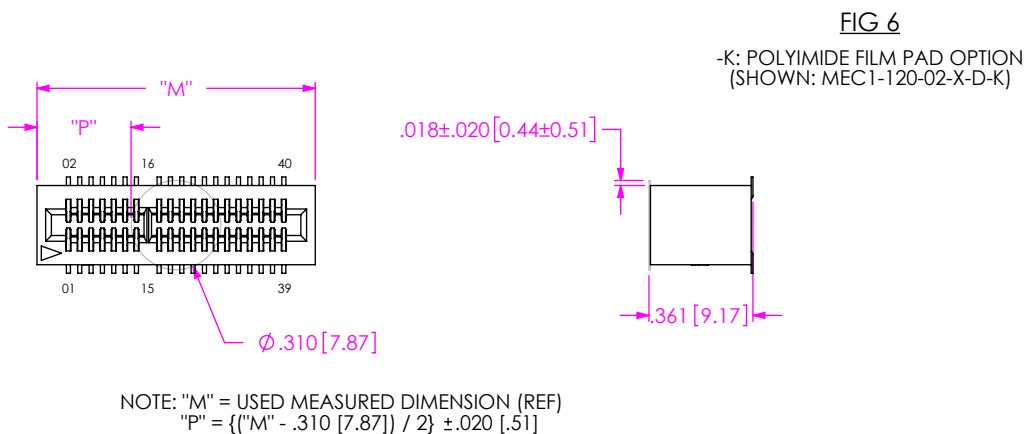
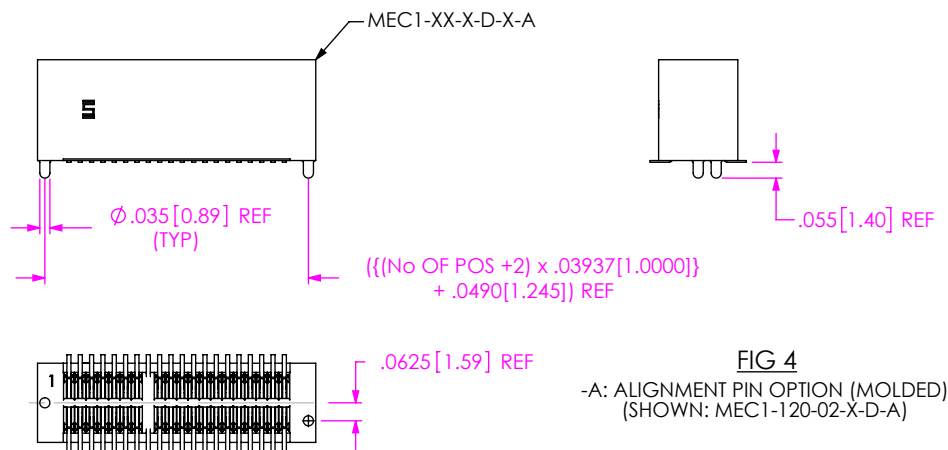
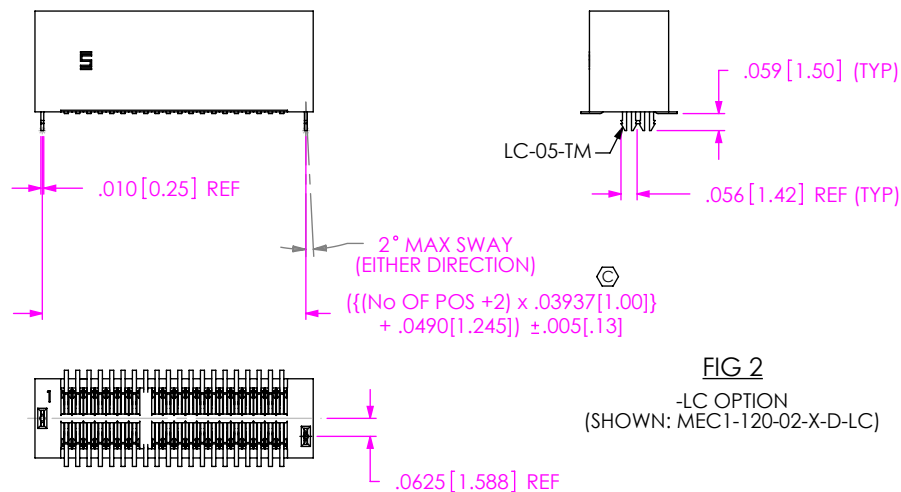
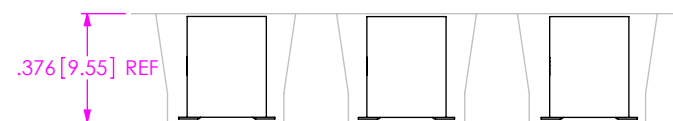
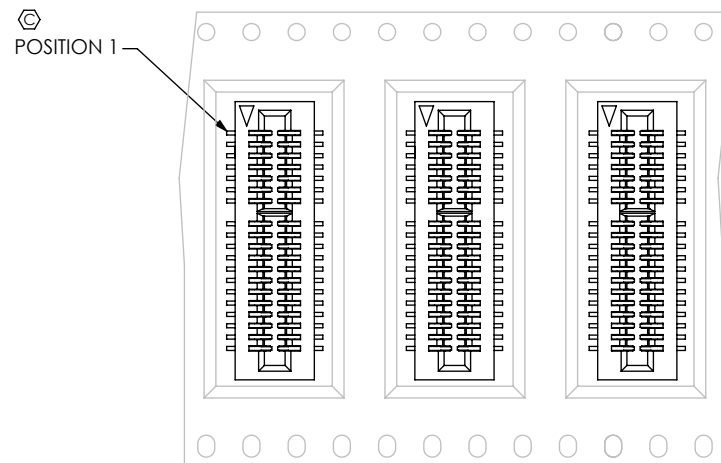


FIG 5
-TR: TAPE & REEL PACKAGING VIEW
(NOT DRAWN TO SCALE)



USER DIRECTION OF UNREELING →

F:\DWG\MISC\MKTG\MEC1-1XX-XX-XX-D-XX-XX-MKT.SLDDRW

PROPRIETARY NOTE
THIS DOCUMENT CONTAINS CONFIDENTIAL AND PROPRIETARY INFORMATION AND ALL DESIGN, MANUFACTURING, REPRODUCTION, USE, PATENT RIGHTS AND SALES RIGHTS ARE EXPRESSLY RESERVED BY SAMTEC, INC. THIS DOCUMENT SHALL NOT BE DISCLOSED, IN WHOLE OR PART, TO ANY UNAUTHORIZED PERSON OR ENTITY NOR REPRODUCED, TRANSFERRED OR INCORPORATED IN ANY OTHER PROJECT IN ANY MANNER WITHOUT THE EXPRESS WRITTEN CONSENT OF SAMTEC, INC.

DO NOT SCALE DRAWING

SHEET SCALE: 1.5:1

samtec

520 PARK EAST BLVD, NEW ALBANY, IN 47150
PHONE: 812-944-6733 FAX: 812-948-5047
e-Mail: info@SAMTEC.com code: 55322

DESCRIPTION:
1mm MINI-EDGE CARD ASSEMBLY

DWG. NO.
MEC1-1XX-XX-XX-D-XX-XX

BY: KEVIN B 5/11/2000 SHEET 2 OF 2