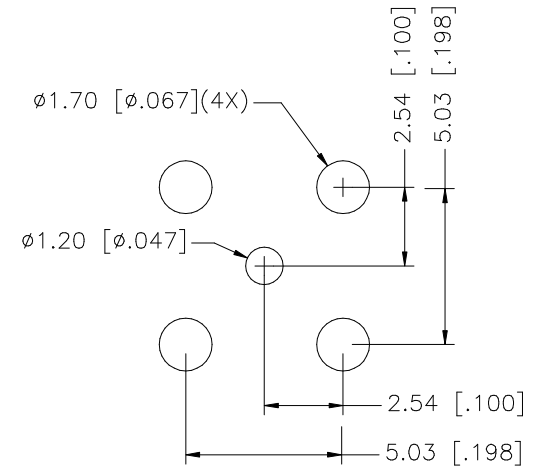
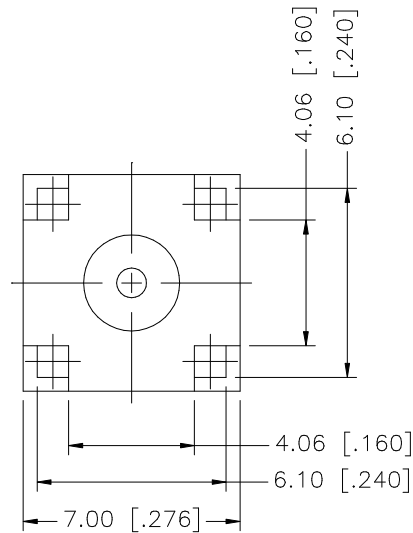
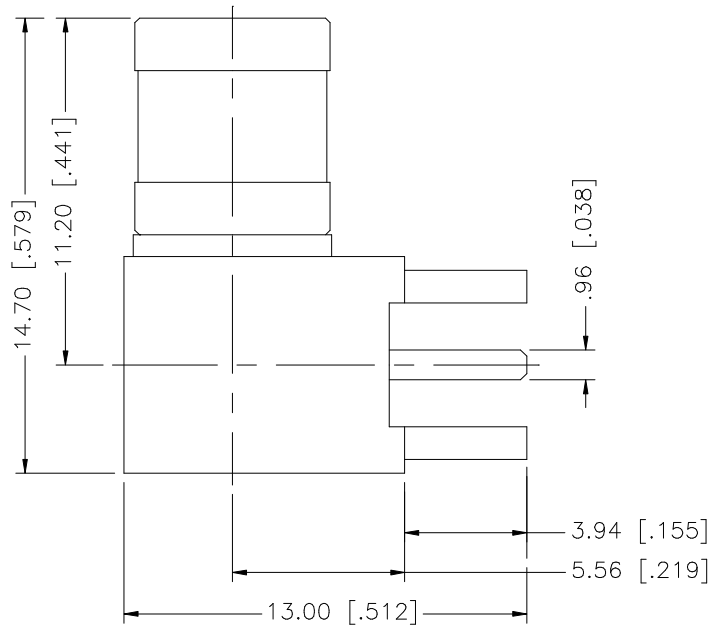


REV.	DATE	DESCRIPTION
NC	09/20/00	INITIAL RELEASE
A	05/24/07	UPDATE DRAWING FORMAT



8					UNLESS OTHERWISE SPECIFIED DIMENSIONS ARE IN MILLIMETERS. DIMENSIONS IN [ ] ARE IN INCHES AND FOR CUSTOMER REFERENCE ONLY.  UNLESS OTHERWISE SPECIFIED TOLERANCES FOR MILLIMETERS ARE: 0.5 – 8mm ± 0.20mm 8 – 30mm ± 0.40mm 30 – 120mm ± 0.50mm  UNLESS OTHERWISE SPECIFIED TOLERANCES FOR INCHES ARE: .020 – .315 = ± 0.007" .315 – 1.180 = ± 0.015" 1.180 – 4.724 = ± 0.020"	APPROVALS		DATE		Amphenol Connex						
7						DRAWN	G.R.S.	05/20/07								
6						CHECKED			PART DESCRIPTION  SMB R/A P.C.B. MOUNT PLUG —							
5						ISSUED										
4						SHEET	1 OF 1									
3	CONTACT PIN	BER. COPPER	GOLD	1	DO NOT SCALE DRAWING	C:/142/142142.DWG		PART NO.  142142								
2	INSULATOR	TEFLON	NATURAL	1												
1	BODY	BRASS	GOLD	1												
	DESCRIPTION	MATERIAL	FINISH	QTY				DWG. NO.	142142.DWG		REV.	A	SIZE	A	SCALE	NA

# Mouser Electronics

Authorized Distributor

Click to View Pricing, Inventory, Delivery & Lifecycle Information:

[Amphenol:](#)

[142142](#)