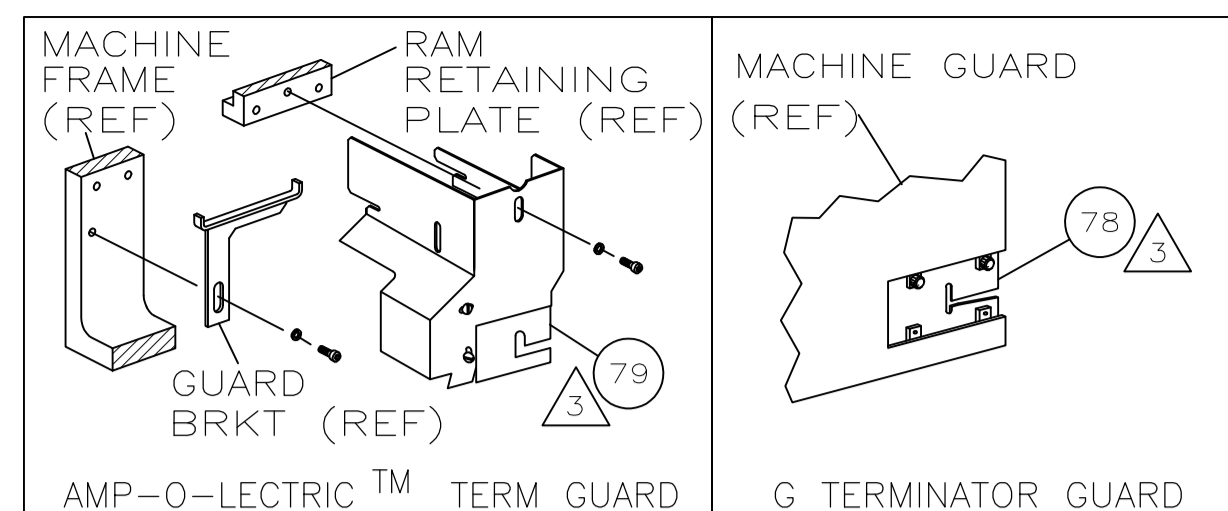


PART NUMBER	REV	FIRST USED
1855122-1	A	122500-1
1855122-2	A	565435-5
1855122-3	A	354500-1
1855122-6	A	122500-1
7-1855122-7	A	-



TERMINAL NAME: JUMBO PV RECEPTAL R/A FOR .040/1.02 PIN			
REF SETTING	CRIMP HEIGHT	WIRE SIZE	
B8	.047 ±.001 [1.19 ±0.05mm]	18	
C5	.043 ±.001 [1.09 ±0.05mm]	20	
-	NOT	USED	
-	NOT	USED	
CRIMP	SIZE	TYPE	RANGE
WIRE	.070 [1.78mm]	F	20-18
INSUL	.110 [2.79mm]	0	.042-.103
WIRE STRIP LENGTH	TERM APPL SPEC	FEED	APPL INSTRUCTION
.148-.168	NONE	.600	408-8040
SET UP GAGE	LAYOUT	458637-1 L2520	

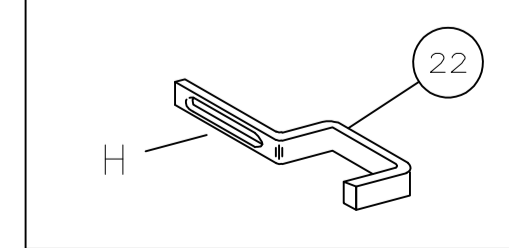
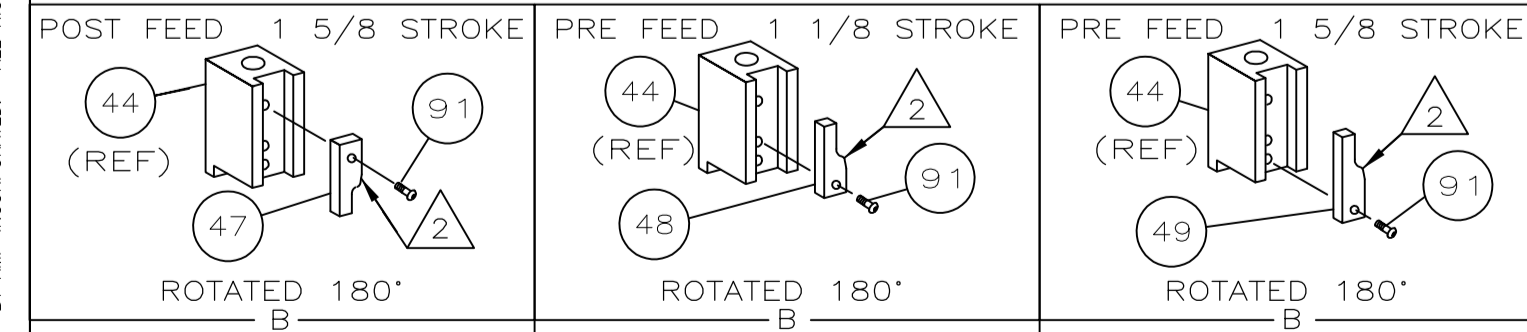
REV	LEADMAKER	MECH POST FEED	REV	LEADMAKER	NO CUT CARRIER	ITEM NO
-1	BENCH MODEL K	MECH PRE FEED	-6	LEADMAKER		
-2	BENCH MODEL G	MECH PRE FEED	-77	SPARE TOOLING		
-3						
1	1	1	1	-	B	22594-8
1	1	1	1	-	B	240628-1
1	1	1	1	-	B	240626-1
1	1	1	1	-	B	240633-1
1	1	1	1	-	A	455680-1
1	1	1	1	-	B	240629-1
1	1	1	1	-	A	1804311-1
1	1	1	1	-	B	240659-3
1	1	1	1	-	B	240658-1
1	1	1	1	-	B	454398-2
1	1	1	1	-	A	1804305-2
1	1	1	1	-	C	454220-1
1	1	1	1	-	D	454485-8
1	1	1	1	-	B	458537-2
1	1	1	1	-	B	240624-1
1	1	1	1	-	B	691499-1
1	1	1	1	-	B	690541-1
1	1	1	1	-	A	455679-2
-	1	-	-	-	B	690602-6
-	-	1	-	-	B	690602-5
1	-	-	1	-	B	690501-4
1	1	1	1	-	A	690191-1
1	1	1	1	-	C	455673-4
1	1	1	1	-	A	690125-1
1	1	1	1	-	A	469367-9
1	1	1	1	-	A	690686-1
1	1	1	1	-	B	879103-2
1	1	1	1	-	D	9-21000-9
1	1	1	1	-	D	18028-2
1	1	1	1	-	D	1804300-1
1	1	1	1	-	D	1583361-1
1	1	1	1	-	A	690432-3
1	1	1	1	-	B	455689-1
1	1	1	1	-	C	3-455671-9
2	2	2	2	-	A	1-22284-0
1	1	1	1	-	B	690546-1
1	1	1	1	-	B	240792-1
1	1	1	1	-	D	6-690504-6
1	1	1	1	-	A	690438-1
1	1	1	1	-	A	1-458230-0
1	1	1	1	-	A	4-22284-9
1	1	1	1	-	C	455888-1
1	1	1	1	-	C	1-455889-4
1	1	1	1	-	B	318563-1
2	2	2	2	-	A	994991-5
1	1	1	1	-	A	1804303-1
1	1	1	1	-	A	1424352-1
1	1	1	1	-	A	6-22279-4
1	1	1	1	-	B	690461-1
1	1	1	1	-	C	468798-1
1	1	1	1	-	C	462006-3
1	1	1	1	-	C	1424351-1
1	1	1	1	-	A	1-853714-3
1	1	1	1	-	B	1-853720-0
1	1	1	1	-	B	455888-1
1	1	1	1	-	B	1-238011-0
1	1	1	1	-	C	6-683454-4
1	1	1	1	-	C	455888-3
1	1	1	1	-	C	1424354-1
-77	-6	-3	-2	-1	U/M	DWG SIZE

QTY	REQD PER ASSY	PARTS LIST	ITEM NO						
			129						
			128						
			127						
			126						
			125						
1	1	1	1	-	A	217238-1	GENERAL INSTRUCTION PACKAGE	124	
1	1	1	1	-	-	4088040	SF APPL INST 408-8040	123	
								122	
1	1	1	1	-	A	3-21028-7	PIN,SLT SPR(Ø.093x.75)ST GDE PL	121	
1	1	1	1	-	A	1-21030-1	PIN,DOWEL(Ø.187x.50)LEVER	120	
1	1	1	1	-	A	1-21030-6	PIN,DOWEL(Ø.187x1.25)HOUSING	119	
2	2	2	2	-	A	21045-3	RING,RET "C"(Ø.187)FD FING PIN	118	
1	1	1	1	-	A	21024-5	WASHER, LOCK(#10)ADJ BLOCK	117	
2	2	2	2	-	A	21024-5	WASHER,LOCK(#10)ADJ PLATE	116	
2	2	2	2	-	A	21024-5	WASHER,LOCK(#10)FEED GDE ROD	115	
2	2	2	2	-	A	21024-2	WASHER,LOCK(#4)FRONT STP GUIDE	114	
2	2	2	2	-	A	1-21046-6	RING, RETAIN, 5/16 E-RING	113	
								112	
2	2	2	2	-	A	21024-4	WASHER,LOCK(#8)STRIPPER	111	
								110	
								109	
								108	
1	1	1	1	-	A	21068-5	NUT,HEX(6-32)FEED ADJ	107	
								106	
								105	
								104	
1	1	1	1	-	A	21009-2	SCR,SKT SET(1/4-20x.25 LW)RAM	103	
2	2	2	2	-	A	21017-2	SCR,DRIVE(#2x.19)ID PLATE	102	
1	1	1	1	-	A	6-23715-5	SCR,PAN HD(6-32x1.50)FEED ADJ	101	
1	1	1	1	-	B	461264-5	PLATE, IDENTIFICATION	100	
2	2	2	2	-	A	5-21006-6	SCR, SET (10-32x.75)DRAG	99	
1	1	1	1	-	A	22733-8	SCR,BHC(8-32x.38 LW)ANVIL	98	
4	4	4	4	-	A	2-21002-9	SCR,BHC(10-32x.75)CAP	97	
3	3	3	3	-	A	2-22733-8	SCR,BHC(1/4-20x.62)HOUSING	96	
1	1	1	1	-	A	2-21002-7	SCR,BHC(10-32x.50)SG ADJ BLOCK	95	
2	2	2	2	-	A	2-21002-2	SCR,BHC(8-32x.50)TERM H DWN	94	
2	2	2	2	-	A	2-21002-1	SCR,BHC(8-32x.38)TERM H DWN	93	
								92	
1	1	1	1	-	A	1-21002-7	SCR,BHC(6-32x.38)CAM	91	
								90	
								89	
								88	
2	2	2	2	-	A	1-21000-3	SCR, SHC 4-40x .25	87	
1	1	1	1	-	A	2-22603-0	SCR,HEX HD(8-32x.31)FEED FINGER	86	
1	1	1	1	-	A	2-21000-8	SCR,SHC(8-32x.62)SHEAR	85	
1	1	1	1	-	A	2-21000-7	SCR,SHC(8-32x.50)STRIPPER	84	
2	2	2	2	-	A	3-21000-7	SCR,SHC(10-32x.75)FEED ROD GD	83	
2	2	2	2	-	A	3-21000-6	SCR,SHC(10-32x.62)FD ADJ BLK	82	
1	1	1	1	-	A	3-21000-4	SCR,SHC(10-32x.38)SG ADJ BL	81	
1	1	1	1	-	A	3-21000-4	SCR,SHC(10-32x.38)PIVOT BLK	80	
-	-	1	-	-	B	455749-1	GUARD, WINDOW	79	
-	REF	-	-	-	B	679532-1	INSERT, GUARD	78	
2	2	2	2	-	A	22593-1	NUT, HEX, JAM SS	77	
1	1	1	1	-	A	1804310-1	MAGNET RING	76	
								75	
1	1	1	1	-	A	1804299-1	SPACER, MAGNET	74	
2	2	2	2	-	A	3-21081-3	SHCS, 1/4-20 X 1.25	73	
1	1	1	1	-	A	458109-1	WASHER, SPECIAL	72	
1	1	1	1	-	A	690517-1	SPACER	71	
-77	-6	-3	-2	-1	U/M	DWG SIZE	PART NO	DESCRIPTION	ITEM NO

QTY	REQD PER ASSY	PARTS LIST	ITEM NO
			74
			73
			72
			71
			70
			69
			68
			67
			66
			65
			64
			63
			62
			61
			60
			59
			58
			57
			56
			55
			54
			53
			52
			51
			50
			49
			48
			47
			46
			45
			44
			43
			42
			41
			40
			39
			38
			37
			36
			35
			34
			33
			32
			31
			30
			29
			28
			27
			26
			25
			24
			23
			22
			21
			20
			19
			18
			17
			16
			15
			14
			13
			12
			11
			10
			9
			8
			7
			6
			5
			4
			3
			2
			1

- 1 RECOMMENDED SPARE PARTS.
- 2 GREASE LIGHTLY.
- 3 GUARD MUST BE IN PLACE WHEN OPERATING APPLICATOR IN A BENCH MACHINE.
- 4 LUBRICATE DAILY USING NO. 20 MACHINE OIL.
- 5. ITEMS WITH QTY OF REF SPECIFIED (EXCEPT ITEMS 78 AND 79) ARE USED ON ITEM 46.
- 6 CUT TO LENGTH AT ASSY

*** WARNING**
ON INSTALLATION, SET WIRE DISC TO LARGEST WIRE SIZE SETTING. USE OF SETTINGS BELOW MIN REQ'D CRIMP HEIGHT SETTING WILL CAUSE DAMAGE TO CRIMP TOOLING



LOC A
DIST 66

THIS DRAWING IS A CONTROLLED DOCUMENT.

19

THIS DRAWING IS UNPUBLISHED. RELEASE FOR PUBLICATION BY AMP INCORPORATED. ALL RIGHTS RESERVED. COPYRIGHT 19

1855122

D

C

B

A

Mouser Electronics

Authorized Distributor

Click to View Pricing, Inventory, Delivery & Lifecycle Information:

[TE Connectivity:](#)

[1855122-6](#)