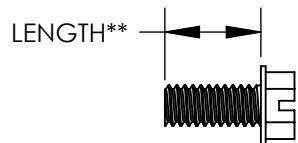
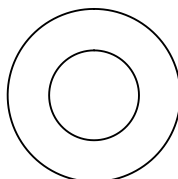
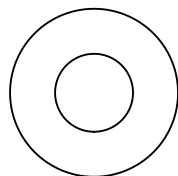
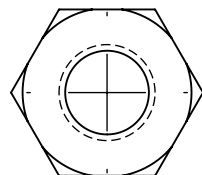
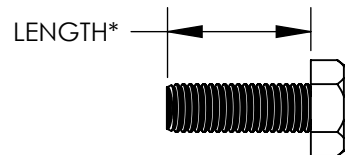


THIS COPY IS PROVIDED ON A RESTRICTED BASIS AND IS NOT TO BE USED IN ANY WAY DETRIMENTAL TO THE INTERESTS OF PANDUIT CORP.

DIMENSIONS - IN [mm]



COMPONENT DESCRIPTION	PART NUMBER			
	HDW1/4-KT	HDW3/8-KT	HDW1/4-A-KT	HDW3/8-A-KT
STAINLESS STEEL 1/4-20 HEX BOLT, 1.00 [25.4] LONG* INSTALLATION TOOL: 7/16" WRENCH	2	N/A	2	N/A
STAINLESS STEEL 3/8-16 HEX BOLT, 1.00 [25.4] LONG* INSTALLATION TOOL: 9/16" WRENCH	N/A	2	N/A	2
STAINLESS STEEL 1/4-20 HEX NUT INSTALLATION TOOL: 9/16"	2	N/A	2	N/A
STAINLESS STEEL 3/8-16 HEX NUT INSTALLATION TOOL: 9/16"	N/A	2	N/A	2
STAINLESS STEEL 1/4 FLAT WASHER	4	N/A	4	N/A
STAINLESS STEEL 3/8 FLAT WASHER	N/A	4	N/A	4
STAINLESS STEEL 1/4 BELLEVILLE COMPRESSION WASHER	2	N/A	2	N/A
STAINLESS STEEL 3/8 BELLEVILLE COMPRESSION WASHER	N/A	2	N/A	2
#12-24 THREAD FORMING SCREW, .45 [11.4] LONG** INSTALLATION TOOL: SLOTTED SCREWDRIVER / 5/16" WRENCH	2	2	N/A	N/A
#10-32 THREAD FORMING SCREW, .45 [11.4] LONG** INSTALLATION TOOL: SLOTTED SCREWDRIVER / 5/16" WRENCH	N/A	N/A	2	2
M5 THREAD FORMING SCREW, .45 [11.4] LONG** INSTALLATION TOOL: SLOTTED SCREWDRIVER / 8mm WRENCH	N/A	N/A	2	2
M6 THREAD FORMING SCREW, .45 [11.4] LONG** INSTALLATION TOOL: SLOTTED SCREWDRIVER / 8mm WRENCH	2	2	N/A	N/A

REV	DATE	BY	CHK	DESCRIPTION	ECN	SUP
02	2/12	JHNU	JHNU	ADDED LENGTH TO HEX BOLT & SCREW IN TABLE	N41736BB-C41736	RGB
01	3/10	JHNU	JHNU	ADDED INSTALLATION TOOL TO COMPONENT DESCRIPTION		
00	5/08	JHNU	JHNU	DRAWING RELEASED		

PANDUIT CORP. TINLEY PARK, ILLINOIS

STAINLESS STEEL HARDWARE KITS
(HDW1/4-KT, HDW3/8-KT, HDW1/4-A-KT, HDW3/8-A-KT)
CUSTOMER DRAWING

SCALE N/A DRAWING NO / CAD FILE C41736_02