

THIS DRAWING IS UNPUBLISHED.

RELEASED FOR PUBLICATION

© COPYRIGHT - BY TYCO ELECTRONICS CORPORATION. ALL RIGHTS RESERVED.

LOC
-----

	DIST
--	------

REVISIONS

GF

00

	F
--	---

LT
----

DESCRIPTION

DATE \_\_\_\_\_

	DWN
--	-----

APVD
------

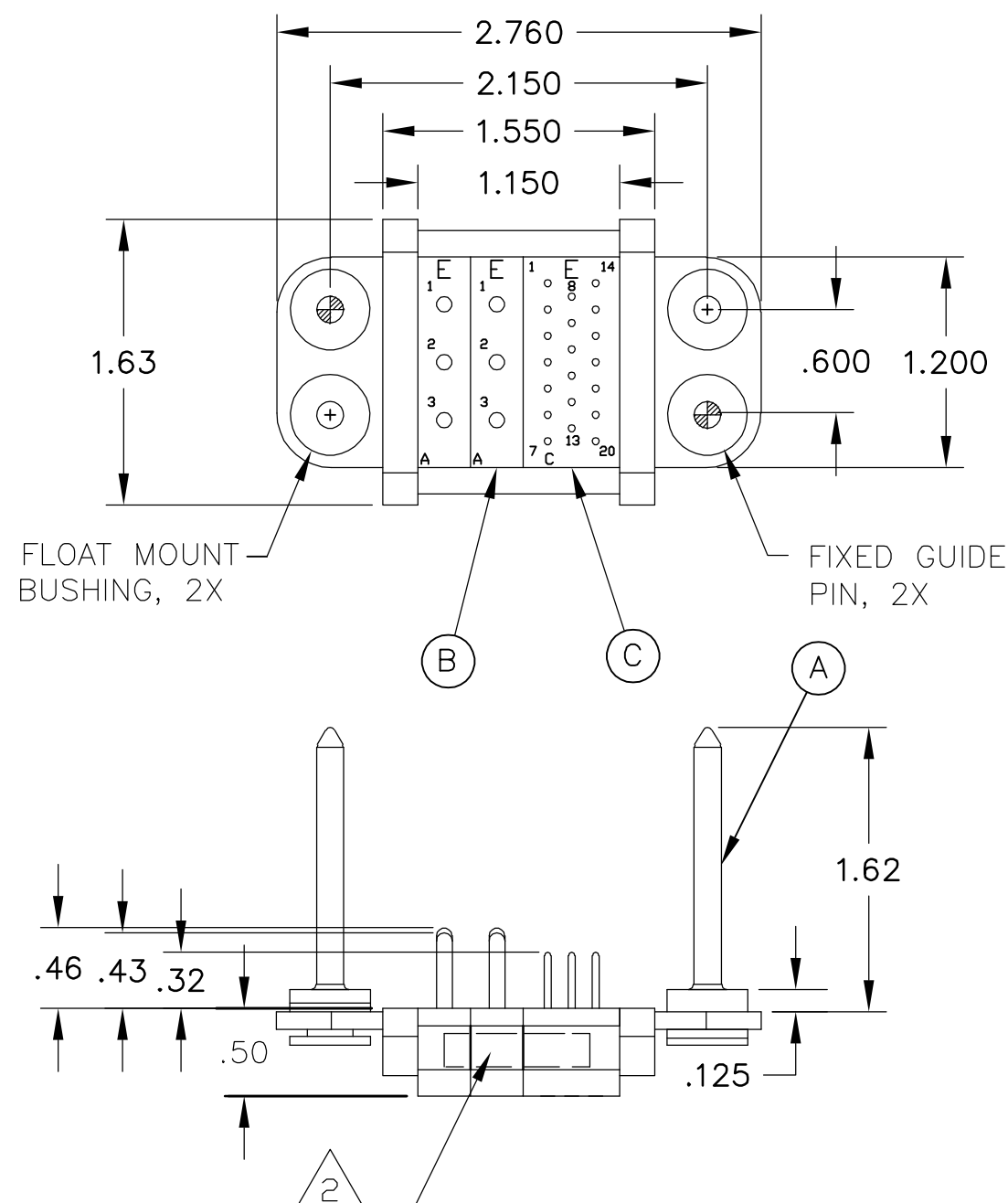
	A
--	---

NEW RELEASE

5MAR0

RG
----

DO



1. PART NUMBER CHANGES AND/OR DESIGN CHANGES AFFECTING ITEM INTERCHANGEABILITY REQUIRE PRIOR TYCO APPROVAL AND AUTHORIZATION BY REVISION TO THIS DRAWING.

- 2 ITEMS PROVIDED TO THIS SPECIFICATION TO BE PERMANENTLY IDENTIFIED  
PER THE FOLLOWING IDENTIFIER:

YEAR  WEEK 

TYCO PART NUMBER

DATE CODE (e.g. 0212)

XXXXXXXXXX-X

XXXX

- △3 MODULES NOTED ARE CRIMP REMOVABLE STYLE CONTACTS. CONTACTS WILL BE PURCHASED SEPARATELY.


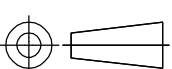
REF PIN CONTACT, SIZE 12, STD. PN: 1766193-1

REF PIN CONTACT, SIZE 12, PREMATE PN: 1766195-1

REF PIN CONTACT, SIZE 20, STD PN: 1650155-1

- △4 MOUNTING FLANGE BUSHINGS ACCEPT 6/32 SCREW (.156 DIA. CLEARANCE HOLE, FLOAT MOUNT) OR 8/32 SCREW (.173 DIA. CLEARANCE HOLE, FLOAT MOUNT), USER SUPPLIED.

3	1	1648463-1	MODULE C	C
3	2	1648461-1	MODULE A	B
	2	6648253-1	END CAP, GUIDE PIN, FLOAT	A
	-1	PART NUMBER	DESCRIPTION	ITEM

THIS DRAWING IS A CONTROLLED DOCUMENT.		DWN R.GRZYBOWSKI		05MAR2007		 Tyco Electronics Corporation Harrisburg, PA 17105-3608	
DIMENSIONS: INCHES		TOLERANCES UNLESS OTHERWISE SPECIFIED:		CHK D.ORRIS		5MAR07	
		0 PLC ± -		APVD S.FLICKINGER		5MAR07	
		1 PLC ± -		PRODUCT SPEC		NAME  PIN CONNECTOR DOMINO W/ PANEL CUT-OUT	
		2 PLC ± .02		—			
		3 PLC ± .010		APPLICATION SPEC			
4 PLC ± -		—		SIZE		CAGE CODE	DRAWING NO
ANGLES ± 5		FINISH		WEIGHT		RESTRICTED T	
MATERIAL		—		—		A3 00779	
—		—		—		C-6646144	
CUSTOMER DRAWING						SCALE	1:1
						SHEET	1 OF 2
						REV	A



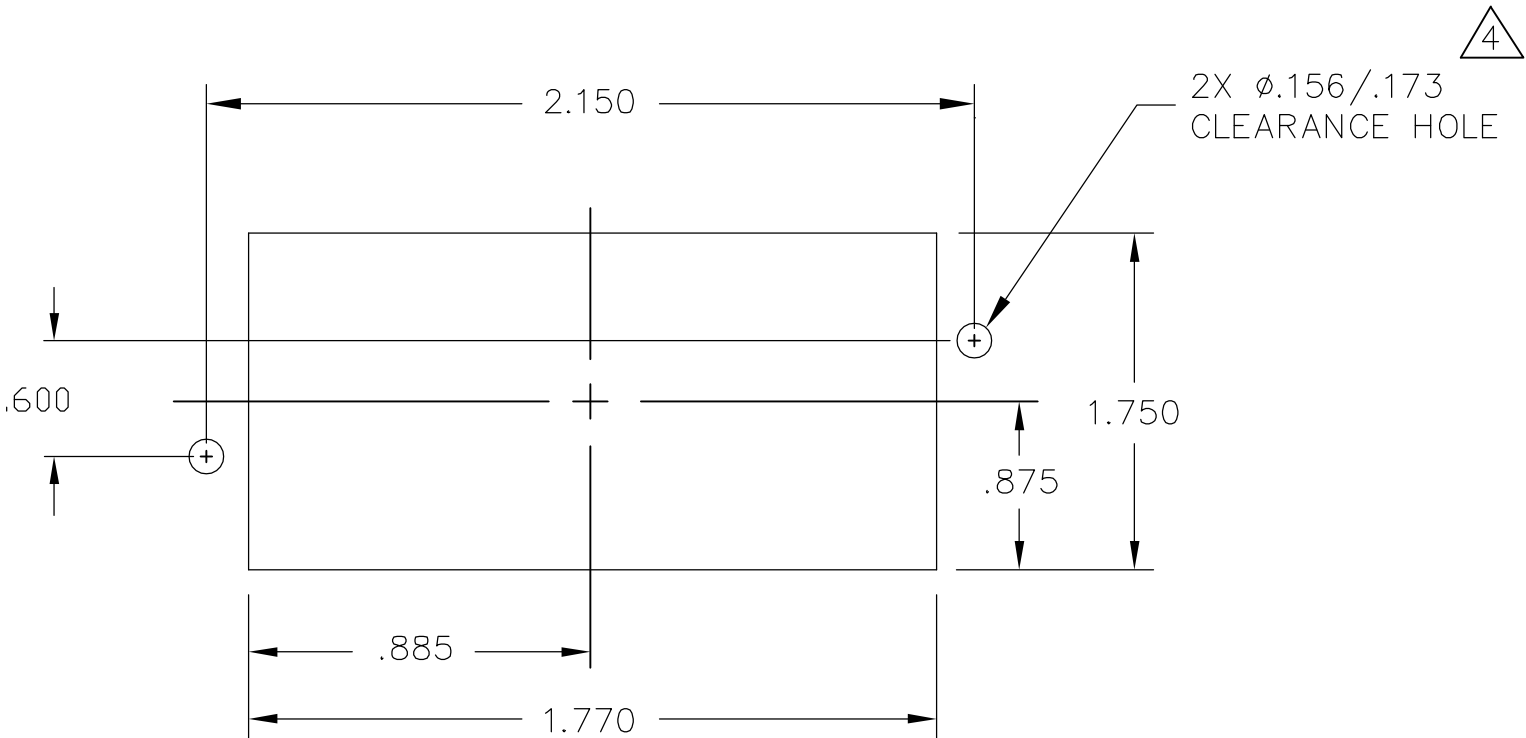
4

3

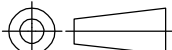
2

1

LOC	DIST	REVISIONS					
GP	00	P	LTR	DESCRIPTION	DATE	DWN	APVD
			—	SEE SHEET 1	—	—	—



PIN PANEL MOUNT CUTOUT  
SCALE: NONE

THIS DRAWING IS A CONTROLLED DOCUMENT.		DWN R.GRZYBOWSKI	05MAR2007	<b>tyco</b> <b>Electronics</b>		Tyco Electronics Corporation Harrisburg, PA 17105-3608	
DIMENSIONS: INCHES		CHK D.ORRIS	5MAR07	NAME  PIN CONNECTOR DOMINO W/ PANEL CUT-OUT			
		APVD S.FLICKINGER	5MAR07				
		PRODUCT SPEC —					
		APPLICATION SPEC —					
		WEIGHT —					
MATERIAL —	TOLERANCES UNLESS OTHERWISE SPECIFIED: 0 PLC ± — 1 PLC ± — 2 PLC ± .02 3 PLC ± .010 4 PLC ± — ANGLES ± 5	CUSTOMER DRAWING		SIZE A3	CAGE CODE 00779	DRAWING NO C-6646144	RESTRICTED TO —
FINISH —		SCALE 1:1		SHEET 2 OF 2		REV A	



# Mouser Electronics

Authorized Distributor

Click to View Pricing, Inventory, Delivery & Lifecycle Information:

[TE Connectivity:](#)

[6646144-1](#)