

4

3

2

1

THIS DRAWING IS UNPUBLISHED.

RELEASED FOR PUBLICATION

© COPYRIGHT

ALL RIGHTS RESERVED.

LOC

DIST


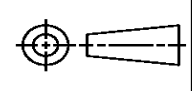
REVISIONS

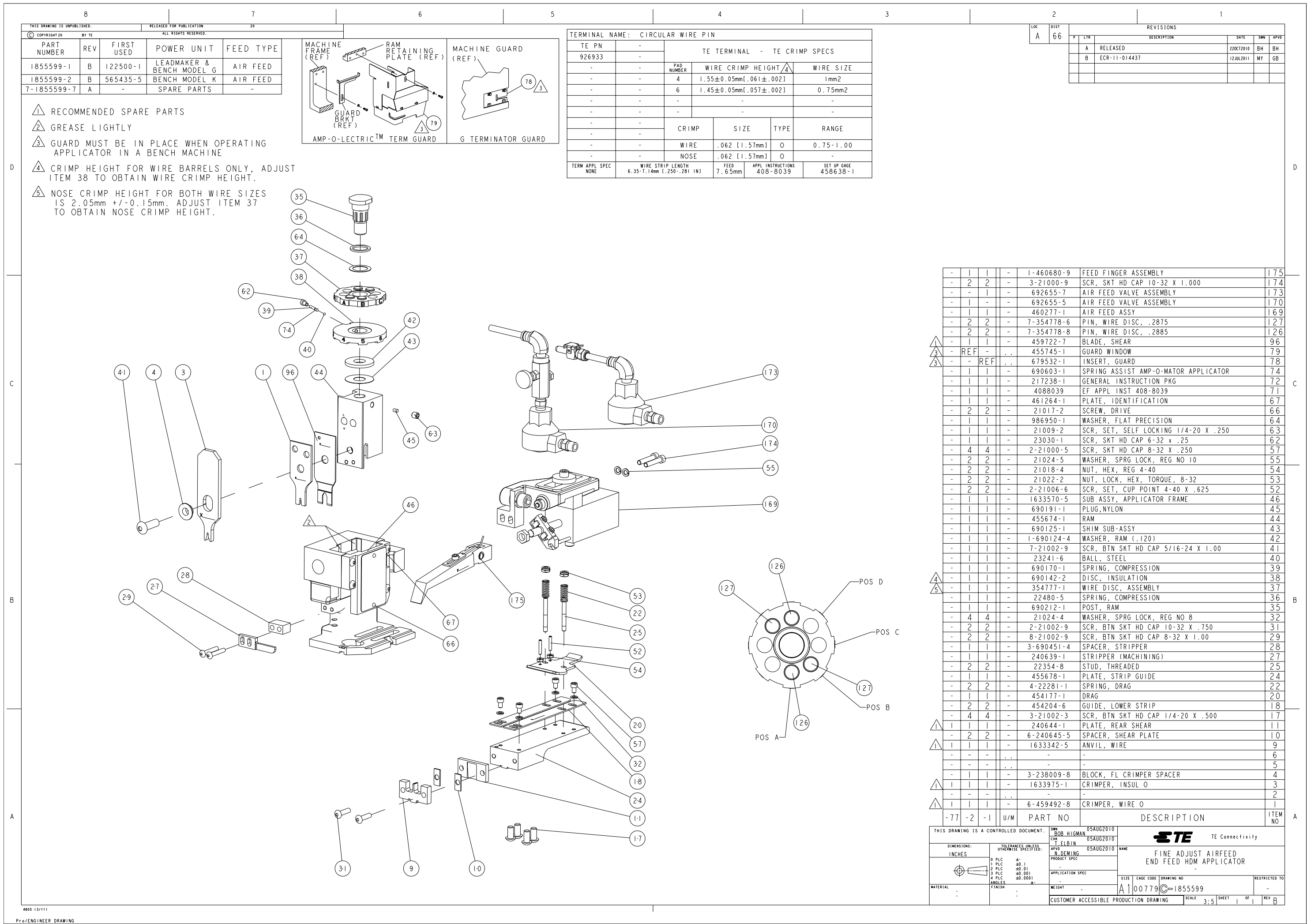
P	LTR	DESCRIPTION	DATE	DWN	APVD
	B1	ECR-14-002652	12MAR2014	GK	HMR

REPLACED BY OCEAN STYLE APPLICATOR PART
NUMBER 2150150-2

FOR REPLACEMENT PARTS FOR APPLICATOR 1855599
REFER TO ADDITIONAL PAGE(S). SPARE PARTS KIT (IF LISTED)
WILL REMAIN AVAILABLE.

THE REPLACEMENT OCEAN STYLE APPLICATOR HAS THE
SAME TERMINATOR/PRESS INTERFACE AS APPLICATOR
1855599

THIS DRAWING IS A CONTROLLED DOCUMENT.		DWN GOPALAKRISHNA HV		 TE Connectivity			
DIMENSIONS:		CHK RAGHAVENDRA					
		APVD RAGHAVENDRA		NAME FINE ADJUST AIRFEED END FEED HDM APPLICATOR			
		PRODUCT SPEC					
		APPLICATION SPEC					
MATERIAL		WEIGHT		SIZE A3	CAGE CODE	DRAWING NO C- 1855599	RESTRICTED TO
FINISH		CUSTOMER ACCESSIBLE PRODUCTION DRAWING		SCALE		SHEET 1 OF 2	REV B1



THIS DRAWING IS UNPUBLISHED. RELEASED FOR PUBLICATION 20				
ALL RIGHTS RESERVED.				
PART NUMBER	REV	FIRST USED	POWER UNIT	FEED TYPE
1855599-1	B	122500-1	LEADMAKER & BENCH MODEL G	AIR FEED
1855599-2	B	565435-5	BENCH MODEL K	AIR FEED
7-1855599-7	A	-	SPARE PARTS	-

- △ RECOMMENDED SPARE PARTS
- △ GREASE LIGHTLY
- △ GUARD MUST BE IN PLACE WHEN OPERATING APPLICATOR IN A BENCH MACHINE
- △ CRIMP HEIGHT FOR WIRE BARRELS ONLY, ADJUST ITEM 38 TO OBTAIN WIRE CRIMP HEIGHT.
- △ NOSE CRIMP HEIGHT FOR BOTH WIRE SIZES IS 2.05mm +/- 0.15mm. ADJUST ITEM 37 TO OBTAIN NOSE CRIMP HEIGHT.

TERMINAL NAME: CIRCULAR WIRE PIN				
TE PN	-	TE TERMINAL - TE CRIMP SPECS		
926933	-	PAD NUMBER	WIRE CRIMP HEIGHT	WIRE SIZE
-	-	4	1.55±0.05mm[.061±.002]	1mm2
-	-	6	1.45±0.05mm[.057±.002]	0.75mm2
-	-	-	-	-
-	-	-	-	-
-	-	-	-	-
-	-	-	-	-
-	-	CRIMP	SIZE	TYPE
-	-	WIRE	.062 [1.57mm]	O
-	-	NOSE	.062 [1.57mm]	O
-	-	-	-	-
TERM APPL SPEC	WIRE STRIP LENGTH	FEED	APPL INSTRUCTIONS	SET UP GAGE
NONE	6.35-7.14mm [1.250-.281 IN]	7.65mm	408-8039	458638-1

REVISONS				
P	LYR	DESCRIPTION	DATE	OWN
A	RELEASED		22OCT2010	BH
B	ECR-11-014437		12JUL2011	MY
				GB

-	1	1	-	1-460680-9	FEED FINGER ASSEMBLY	175
-	2	2	-	3-21000-9	SCR, SKT HD CAP 10-32 X 1.000	174
-	-	1	-	692655-7	AIR FEED VALVE ASSEMBLY	173
-	1	-	-	692655-5	AIR FEED VALVE ASSEMBLY	170
-	1	1	-	460277-1	AIR FEED ASSY	169
-	2	2	-	7-354778-6	PIN, WIRE DISC, .2875	127
-	2	2	-	7-354778-8	PIN, WIRE DISC, .2885	126
-	1	1	-	459722-7	BLADE, SHEAR	96
-	REF	-	-	455745-1	GUARD WINDOW	79
-	-	REF	-	679532-1	INSERT, GUARD	78
-	1	1	-	690603-1	SPRING ASSIST AMP-O-MATOR APPLICATOR	74
-	1	1	-	217238-1	GENERAL INSTRUCTION PKG	72
-	1	1	-	4088039	EF APPL INST 408-8039	71
-	1	1	-	461264-1	PLATE, IDENTIFICATION	67
-	2	2	-	21017-2	SCREW, DRIVE	66
-	1	1	-	986950-1	WASHER, FLAT PRECISION	64
-	1	1	-	21009-2	SCR, SET, SELF LOCKING 1/4-20 X .250	63
-	1	1	-	23030-1	SCR, SKT HD CAP 6-32 x .25	62
-	4	4	-	2-21000-5	SCR, SKT HD CAP 8-32 X .250	57
-	2	2	-	21024-5	WASHER, SPRG LOCK, REG NO 10	55
-	2	2	-	21018-4	NUT, HEX, REG 4-40	54
-	2	2	-	21022-2	NUT, LOCK, HEX, TORQUE, 8-32	53
-	2	2	-	2-21006-6	SCR, SET, CUP POINT 4-40 X .625	52
-	1	1	-	1633570-5	SUB ASSY, APPLICATOR FRAME	46
-	1	1	-	690191-1	PLUG,NYLON	45
-	1	1	-	455674-1	RAM	44
-	1	1	-	690125-1	SHIM SUB-ASSY	43
-	1	1	-	1-690124-4	WASHER, RAM (.120)	42
-	1	1	-	7-21002-9	SCR, BTN SKT HD CAP 5/16-24 X 1.00	41
-	1	1	-	23241-6	BALL, STEEL	40
-	1	1	-	690170-1	SPRING, COMPRESSION	39
-	1	1	-	690142-2	DISC, INSULATION	38
-	1	1	-	354777-1	WIRE DISC, ASSEMBLY	37
-	1	1	-	22480-5	SPRING, COMPRESSION	36
-	1	1	-	690212-1	POST, RAM	35
-	4	4	-	21024-4	WASHER, SPRG LOCK, REG NO 8	32
-	2	2	-	2-21002-9	SCR, BTN SKT HD CAP 10-32 X .750	31
-	2	2	-	8-21002-9	SCR, BTN SKT HD CAP 8-32 X 1.00	29
-	1	1	-	3-690451-4	SPACER, STRIPPER	28
-	1	1	-	240639-1	STRIPPER (MACHINING)	27
-	2	2	-	22354-8	STUD, THREADED	25
-	1	1	-	455678-1	PLATE, STRIP GUIDE	24
-	2	2	-	4-22281-1	SPRING, DRAG	22
-	1	1	-	454177-1	DRAG	20
-	2	2	-	454204-6	GUIDE, LOWER STRIP	18
-	4	4	-	3-21002-3	SCR, BTN SKT HD CAP 1/4-20 X .500	17
-	1	1	-	240644-1	PLATE, REAR SHEAR	11
-	2	2	-	6-240645-5	SPACER, SHEAR PLATE	10
-	1	1	-	1633342-5	ANVIL, WIRE	9
-	-	-	-	-	-	6
-	-	-	-	-	-	5
-	1	1	-	3-238009-8	BLOCK, FL CRIMPER SPACER	4
-	1	1	-	1633975-1	CRIMPER, INSUL O	3
-	-	-	-	-	-	2
-	1	1	-	6-459492-8	CRIMPER, WIRE O	1
-77	-2	-1	U/M	PART NO	DESCRIPTION	ITEM NO

THIS DRAWING IS A CONTROLLED DOCUMENT.				
DIMENSIONS: INCHES		TOLERANCES UNLESS OTHERWISE SPECIFIED:		APPROVED: N. DEMING
0 PLC ±.1		1 PLC ±.01		PRODUCT SPEC
2 PLC ±.001		3 PLC ±.0001		APPLICATION SPEC
4 PLC ±.00001		ANGLES ±.1		WEIGHT
MATERIAL		FINISH		SIZE
				CAGE CODE
				DRAWING NO
				RESTRICTED TO
				SCALE
				SHEET
				OF
				REV
				B

Mouser Electronics

Authorized Distributor

Click to View Pricing, Inventory, Delivery & Lifecycle Information:

[TE Connectivity:](#)

[1855599-1](#)