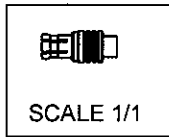
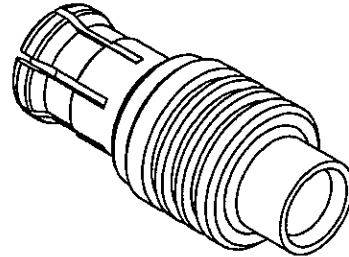
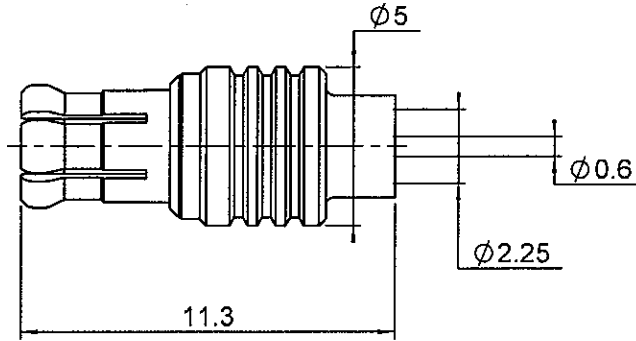
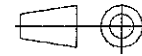


| | |
|----------------------------------|---------------------|
| TECHNICAL DATA SHEET | 1/3 |
| STRAIGHT PLUG SOLDER TYPE | R113.053.000 |
| CABLE .085 | Series : MCX |



All dimensions are in mm.




| COMPONENTS | MATERIALS | PLATINGS (µm) |
|----------------|------------------|------------------------|
| BODY | BRASS | GOLD 0.2 OVER NICKEL 2 |
| CENTER CONTACT | BRASS | GOLD 1.3 OVER NICKEL 2 |
| OUTER CONTACT | BERYLLIUM COPPER | GOLD 0.5 OVER NICKEL 2 |
| INSULATOR | PTFE | |
| GASKET | - | - |
| OTHERS PARTS | - | - |
| - | - | - |
| - | - | - |

Issue : 0925 B

In the effort to improve our products, we reserve the right to make changes judged to be necessary.

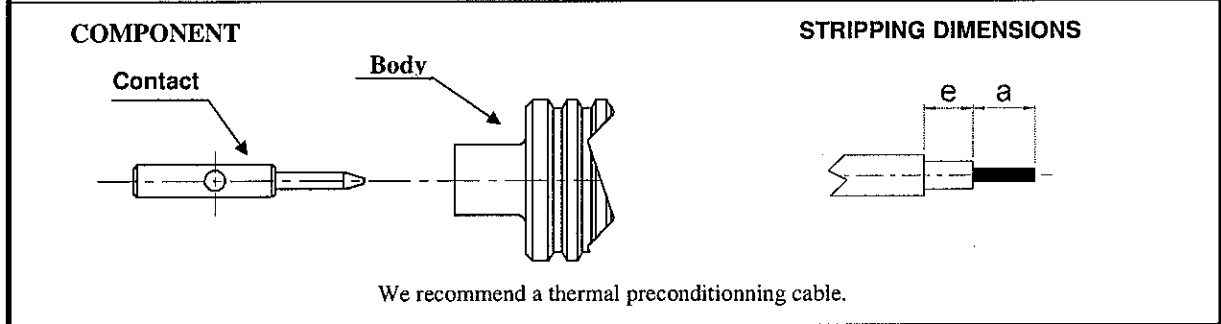


| TECHNICAL DATA SHEET | | 2 / 3 | | | | | | | | | | | | | | |
|--|-------------------------------|---|-------------|-------------|---------|--------------|--------------------|---|---|----|------|------|------|------|------|------|
| STRAIGHT PLUG SOLDER TYPE | | R113.053.000 | | | | | | | | | | | | | | |
| CABLE .085 | | Series : MCX | | | | | | | | | | | | | | |
| PACKAGING | | SPECIFICATION | | | | | | | | | | | | | | |
| Standard | Unit | Other | | | | | | | | | | | | | | |
| 100 | 'W' option | Contact us | | | | | | | | | | | | | | |
| ELECTRICAL CHARACTERISTICS | | CABLE ASSEMBLY | | | | | | | | | | | | | | |
| Impedance | 50 Ω | <table border="1" style="width:100%; border-collapse: collapse;"> <thead> <tr> <th style="text-align: left;">Stripping</th> <th>a</th> <th>b</th> <th>c</th> <th>d</th> <th>e</th> <th>f</th> </tr> </thead> <tbody> <tr> <td>mm</td> <td>2.70</td> <td>0.00</td> <td>0.00</td> <td>0.00</td> <td>2.10</td> <td>0.00</td> </tr> </tbody> </table> | Stripping | a | b | c | d | e | f | mm | 2.70 | 0.00 | 0.00 | 0.00 | 2.10 | 0.00 |
| Stripping | a | b | c | d | e | f | | | | | | | | | | |
| mm | 2.70 | 0.00 | 0.00 | 0.00 | 2.10 | 0.00 | | | | | | | | | | |
| Frequency | 0-6 GHz | Assembly instruction : | | | | | | | | | | | | | | |
| VSWR | 1.10 + 0.0400 x F(GHz) Maxi | | | | | | | | | | | | | | | |
| Insertion loss | 0.25 \sqrt{F} (GHz) dB Maxi | Recommended cable(s) | | | | | | | | | | | | | | |
| RF leakage | - (NA - F(GHz)) dB mini | KS 1 | | | | | | | | | | | | | | |
| Voltage rating | 250 Veff Maxi | RG 405 | | | | | | | | | | | | | | |
| Dielectric withstanding voltage | 750 Veff mini | Cable retention | | | | | | | | | | | | | | |
| Insulation resistance | 1000 M Ω mini | - pull off 155 N mini | | | | | | | | | | | | | | |
| MECHANICAL CHARACTERISTICS | | - torque NA N.cm | | | | | | | | | | | | | | |
| Center contact retention | | TOOLING | | | | | | | | | | | | | | |
| Axial force – Mating end | NA N mini | <table border="1" style="width:100%; border-collapse: collapse;"> <thead> <tr> <th style="text-align: left;">Part Number</th> <th>Description</th> <th>Hexagon</th> </tr> </thead> <tbody> <tr> <td>R282.740.020</td> <td>SOLDERING MOUNTING</td> <td></td> </tr> </tbody> </table> | Part Number | Description | Hexagon | R282.740.020 | SOLDERING MOUNTING | | | | | | | | | |
| Part Number | Description | Hexagon | | | | | | | | | | | | | | |
| R282.740.020 | SOLDERING MOUNTING | | | | | | | | | | | | | | | |
| Axial force – Opposite end | NA N mini | | | | | | | | | | | | | | | |
| Torque | NA N.cm mini | | | | | | | | | | | | | | | |
| Recommended torque | | OTHERS CHARACTERISTICS | | | | | | | | | | | | | | |
| Mating | NA N.cm | | | | | | | | | | | | | | | |
| Panel nut | NA N.cm | | | | | | | | | | | | | | | |
| Clamp nut | NA N.cm | | | | | | | | | | | | | | | |
| A/F clamp nut | 0.0000 mm | | | | | | | | | | | | | | | |
| Mating life | 500 Cycles mini | | | | | | | | | | | | | | | |
| Weight | 0.6430 g | | | | | | | | | | | | | | | |
| ENVIRONMENTAL | | | | | | | | | | | | | | | | |
| Operating temperature | -55/+115 ° C | | | | | | | | | | | | | | | |
| Hermetic seal | NA Atm.cm3/s | | | | | | | | | | | | | | | |
| Panel leakage | NA | | | | | | | | | | | | | | | |
| Issue : 0925 B In the effort to improve our products, we reserve the right to make changes judged to be necessary. | |  | | | | | | | | | | | | | | |

STRAIGHT PLUG SOLDER TYPE

CABLE .085

R113.053.000
Series : MCX



1

Cable stripping.

2

Tin centre contact solder pot.
Solder centre contact on cable inner conductor.
Clean solder.

3

Introduce cable into the connector body until contact with the body shoulder.
Place the sub assembly into the assembly jig R282 740 020 (or equivalent).
We advise to connect a female receptable to the connector prior to solder the body in order to respect right centre contact position.
Tighten the sub assembly.
Solder body on the cable.
Let the assembly cool down before removing it from the jig.
Clean solder.

Mouser Electronics

Authorized Distributor

Click to View Pricing, Inventory, Delivery & Lifecycle Information:

[Radial:](#)

[R113053000](#)