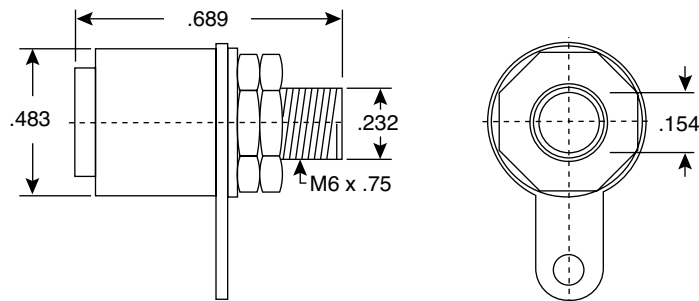
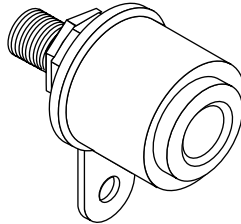


Banana Jacks

16BJ381, 16BJ382, 16BJ383

KOBI CONN

Banana Jacks



DIMENSIONS IN.

SPECIFICATIONS

Type:	banana, chassis mount
Voltage Rating:	125VAC 5A max.
Breadkdown Voltage:	300VAC-1000VDC
Temp. Rating	60°C @ max, melting point around 80°C
Body, Nut:	nickel plated brass
Molded Body:	ABS plastic
Solder Lug, Washer:	nickel plated steel
Colors:	red (16BJ381), black (16BJ382), green (16BJ383)

Date Last Revised: 10-3-11

Available from Mouser Electronics
1-800-346-6873
www.mouser.com

KC-300575

16BJ381, 16BJ382, 16BJ383

Mouser Electronics

Authorized Distributor

Click to View Pricing, Inventory, Delivery & Lifecycle Information:

Kobiconn:

[16BJ382](#) [16BJ383](#) [16BJ381](#)