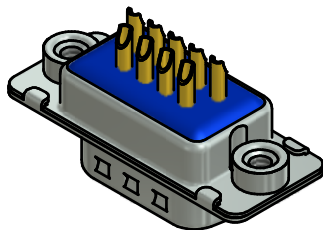


(b)

NOTES:

1. METALSHELLS: STEEL; min. 315µm TIN over 40-80µm NICKEL
2. INSULATOR: HIGH TEMPERATURE PLASTIC UL 94 V-0; BLACK
3. CONTACTS: COPPER ALLOY  
PLATING (SEE PART NO.)  
□ PLEASE ADD C for 30µm HARD GOLD over min. 50µm NICKEL  
□ PLEASE ADD B for 20µm HARD GOLD over min. 50µm NICKEL  
□ PLEASE ADD A for GOLD FLASH over NICKEL ( PREFERRED TYPE )  
SOLDER CUP ACCEPTS CABLE AWG 20
4. THREADED INSERTS: COPPER ALLOY; min. 200µm TIN over 80µm NICKEL
5. COLLARS: COPPER ALLOY; min. 200µm TIN over 80µm NICKEL
6. SEALING COMPOUND: PUR; BLUE
7. CAPACITANCE: 1300pF ±20%
8. DIELECTRIC WITHSTANDING VOLTAGE: 424 VDC
9. MAXIMUM TORQUE VALUE FOR THREAD: 6 in.LB
10. CONNECTOR IS PART MARKED: 241□27120X CONEC ABC (see note 4)



Directive 2002/95/EC RoHS compliant

THIS DRAWING MAY NOT BE COPIED OR REPRODUCED IN ANY WAY, AND MAY NOT BE PASSED ON TO A THIRD PARTY WITHOUT WRITTEN PERMISSION. OWNERSHIP AND COPYRIGHT OF CONEC GmbH DO NOT ALTER CAD DRAWING BY HAND					tolerance		scale: 2:1 (5:1)	
					dim. in mm		material: SEE NOTES	
					date	name	title: <b>D-SUB FILTER MALE</b> 9pos. SOLDER CUP with threaded insert	
					drawn 06.02.06	Lehmenkühler		
					appd. 06.06.06	Mickenbecker		
				norm		dwg no:		
				d-old		<b>24K1A760</b>	DIN-A3 sh: 1	
				5 x b	A4859	31.07.2013	K.H.	part no: (b) <b>241□27120X</b> (see note 4)
				a	Original	<b>CONEC</b> ®		
				rev.	description			date

# Mouser Electronics

Authorized Distributor

Click to View Pricing, Inventory, Delivery & Lifecycle Information:

[CONEC:](#)

[241A27120X](#)