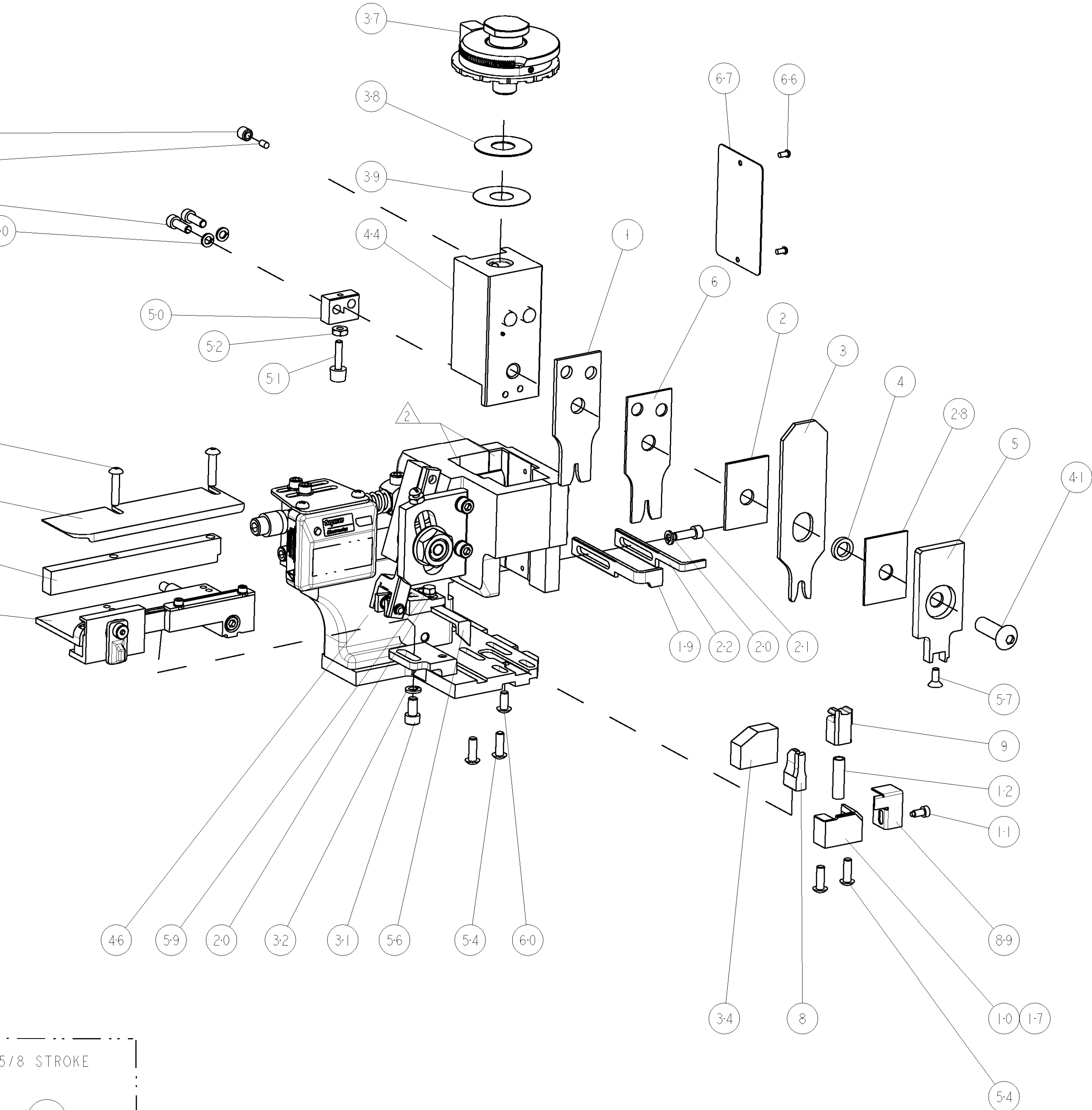
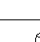


- 1 RECOMMENDED SPARE PARTS
- 2 GREASE LIGHTLY
- 3 GUARD MUST BE IN PLACE WHEN OPERATING APPLICATOR IN A BENCH MACHINE
- 4 APPLY TORO-SEAL IN ALLEN SOCKET TO FILL HOLE AFTER FLAT HD HAS BEEN ADJUSTED TO CORRECT HEIGHT AT QUALIFICATION. APPLY PN 1-23419-5 LOC-TITE TO THREADS.
- 5 STRAIN RELIEF CRIMP HEIGHT FOR 0.8mm2 IS $1.47 \pm 0.05\text{mm}$.
- 6 STRAIN RELIEF CRIMP HEIGHT FOR 0.5mm2 IS $1.42 \pm 0.05\text{mm}$.



	
REF	SETTING
C0	5
C4	6
-	
-	

3	-	-	-	REF	-	...	455749-1	GUARD WINDOW	116
	-	-	REF	-	-	...	679532-1	INSERT, GUARD	115
	-	-	-	-	-	-	1-21002-7	SCR, BTN SKT HD CAP 6-32 X .375	91
3	-	-	-	-	-	-	318563-1	GUARD, FRONT CHIP	89
	-	-	-	-	-	-	4088040	SF APPL INST 408-8040	72
	-	-	-	-	-	-	217238-1	GENERAL INSTRUCTION PKG	71
3	-	-	-	-	-	-	461264-5	PLATE, IDENTIFICATION	67
	-	2	2	2	2	-	21017-2	SCREW, DRIVE	66
	-	-	-	-	-	-	21009-2	SCR, SET, SELF LOCKING 1/4-20 X .250	6
3	-	-	-	-	-	-	22733-8	SCR, BHSC, SELF-LOCKING, 8-32 X .375	6
	-	-	-	-	-	-	2-22603-0	SCR, HEX HD CAP 8-32 X .312	59
	-	-	-	-	-	-	1-21003-9	SCR, FLT SKT HD CAP 6-32 X .375	57
3	-	-	-	-	-	-	458537-2	PAWL, FEED	56
	-	4	4	4	4	-	2-21002-2	SCR, BTN SKT HD CAP 8-32 X .500	54
	-	2	2	2	2	-	2-21000-7	SCR, SKT HD CAP 8-32 X .500	53
3	-	-	-	-	-	-	21018-5	NUT, HEX, REG 6-32	52
	-	-	-	-	-	-	811242-2	BUMPER, HOLD DOWN	51
	-	-	-	-	-	-	690753-1	SPACER, TONKER	50
3	-	-	-	-	-	...	690602-6	CAM, PRE FEED, 1 5/8	49
	-	-	-	-	-	...	690602-5	CAM, PRE FEED, 1 1/8	48
	-	-	-	-	-	-	690501-4	CAM, POST FEED, 1 5/8	47
3	-	-	-	-	-	-	459456-1	APPL. BASIC SUB ASSY (SIDE WISE MOCA)	46
	-	-	-	-	-	-	690191-1	PLUG,NYLON	45
	-	-	-	-	-	-	455673-5	RAM, SIDE FEED	44
3	-	-	-	-	-	-	7-21002-9	SCR, BTN SKT HD CAP 5/16-24 X 1.00	41
	-	-	-	-	-	-	690125-1	SHIM SUB-ASSY	39
	-	-	-	-	-	-	1-469367-2	SHIM	38
3	-	-	-	-	-	-	879103-2	FINE ADJUST HEAD ASSEMBLY	37
	-	-	-	-	-	-	690786-1	TERMINAL SUPPORT	34
	-	2	2	2	2	-	2-21002-4	SCR, BTN SKT HD CAP 8-32 X .750	33
3	-	-	-	-	-	-	21024-5	WASHER, SPRG LOCK, REG NO 10	32
	-	-	-	-	-	-	3-21000-4	SCR, SKT HD CAP 10-32 X .375	31
	-	-	-	-	-	-	1320908-2	SPACER, STRIP GUIDE	30
3	-	-	-	-	-	-	1633091-1	ASSEMBLY, STRIP GUIDE	29
	-	-	-	-	-	-	1-455888-0	SPACER, CRIMPER	28
	-	-	-	-	-	-	1320928-1	PLATE, STRIP GUIDE	24
3	-	-	-	-	-	-	690472-2	STRIPPER	22
	-	-	-	-	-	-	2-21000-7	SCR, SKT HD CAP 8-32 X .500	21
	-	4	4	4	4	-	21024-4	WASHER, SPRG LOCK, REG NO 8	20
3	-	-	-	-	-	-	691353-1	STRIPPER	19
	-	-	-	-	-	-	679625-2	SHEAR HOLDER, FRONT (NO CUT)	17
	-	-	-	-	-	-	3-22280-3	SPRING, COMPRESSION	12
3	-	-	-	-	-	-	690461-2	STOP, SHEAR	11
	-	-	-	-	-	-	1-690459-0	SHEAR HOLDER, FRONT	10
	-	-	-	-	-	-	318707-2	FLOATING SHEAR, FRONT	9
3	-	-	-	-	-	-	2-662520-6	ANVIL, COMBINATION	8
	-	-	-	-	-	-	3-568176-2	CRIMPER, WIRE	6
	-	-	-	-	-	-	318701-1	DEPRESSOR, SHEAR	5
3	-	-	-	-	-	-	238011-4	BLOCK, CRIMPER SPACER	4
	-	-	-	-	-	-	1583690-3	CRIMPER, INSUL O	3
	-	-	-	-	-	-	1-455888-4	SPACER, CRIMPER	2
3	-	-	-	-	-	-	3-568176-1	CRIMPER, WIRE	1

AMP 4805 REV 31MAR2000	CUSTOMER VIEWABLE ASSEMBLY
------------------------	----------------------------

Mouser Electronics

Authorized Distributor

Click to View Pricing, Inventory, Delivery & Lifecycle Information:

[TE Connectivity:](#)

[1855261-2](#)