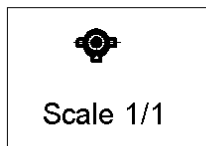
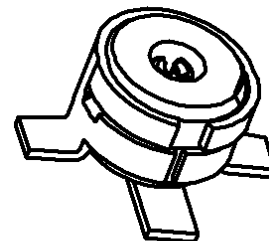
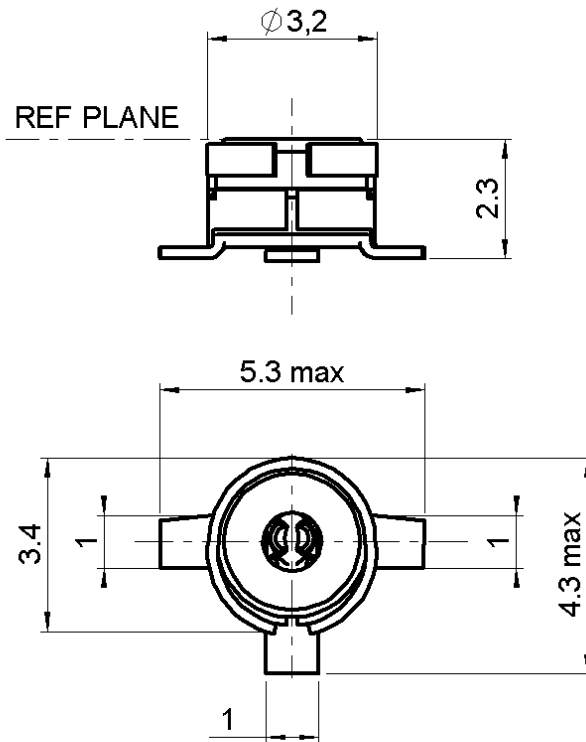


STRAIGHT FEMALE RECEPTACLE FOR PCB

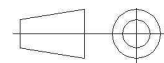
SMT TYPE REEL PACKAGING BY 100

R209.408.012

Series : MMS



All dimensions are in mm.



COMPONENTS	MATERIALS	PLATINGS (μm)
BODY	PHOSPHOR BRONZE	.GOLD 0.2 OVER NICKEL 2
CENTER CONTACT	BERYLLIUM COPPER	GOLD 0.2 OVER TIN NICKEL 2
OUTER CONTACT	PHOSPHOR BRONZE	.GOLD 0.2 OVER NICKEL 2
INSULATOR	PTFE	
GASKET	-	
OTHERS PARTS	-	
-	-	
-	-	

Issue : 0743 A

In the effort to improve our products, we reserve the right to make changes judged to be necessary.



STRAIGHT FEMALE RECEPTACLE FOR PCB**R209.408.012****SMT TYPE REEL PACKAGING BY 100**

Series : MMS

PACKAGING

Standard	Unit	Other
100	'W' option	Contact us

SPECIFICATION**ELECTRICAL CHARACTERISTICS**

Impedance	50	Ω
Frequency	0-6	GHz
VSWR	* + 0,0000	x F(GHz) Maxi
Insertion loss	**	$\sqrt{F}(\text{GHz})$ dB Maxi
RF leakage	- (NA	- F(GHz)) dB mini
Voltage rating	50	Veff Maxi
Dielectric withstanding voltage	250	Veff mini
Insulation resistance	500	M Ω mini

ENVIRONMENTAL

Operating temperature	-40/+125	$^{\circ}\text{C}$
Hermetic seal	NA	Atm.cm3/s
Panel leakage	NA	

OTHERS CHARACTERISTICS

Assembly instruction

Others :

*1.2 à 2GHz/Avg 1,07 **Max 0.07/Avg 0.06

MECHANICAL CHARACTERISTICS

Center contact retention	
Axial force – Mating end	NA N mini
Axial force – Opposite end	NA N mini
Torque	NA N.cm mini

Recommended torque	
Mating	NA N.cm
Panel nut	NA N.cm

Mating life	50 Cycles mini
Weight	0,0300 g

Issue : 0743 A

In the effort to improve our products, we reserve the right to make changes judged to be necessary.



STRAIGHT FEMALE RECEPTACLE FOR PCB**SMT TYPE REEL PACKAGING BY 100****R209.408.012**

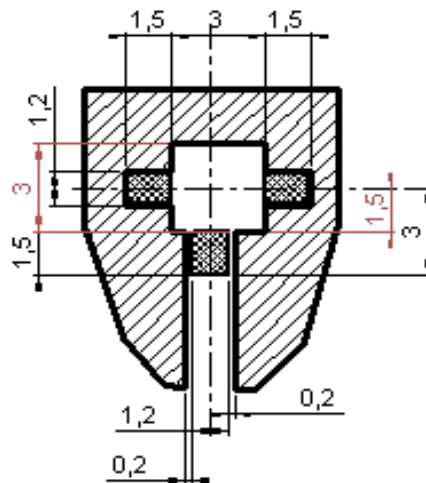
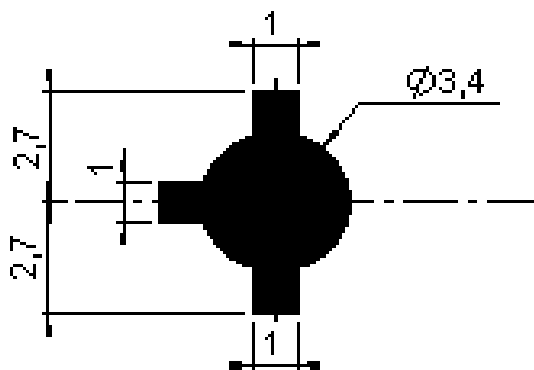
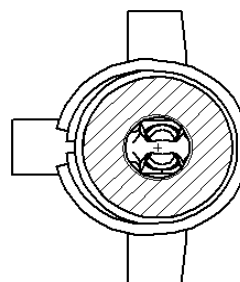
Series : MMS

MMS SERIES – INFORMATION

Coplanar line : Ground and signal are on the same side . Thickness of PCB : 1mm

The material of PCB is glass-epoxy composite. (Er = 4.8)

The solder resist should be printed except for the land pattern on the PCB.

**SHADOW OF MMS RECEPTACLE FOR VIDEO CAMERA****ASPIRATION AREA**

ASPIRATION AREA

Issue : 0743 A

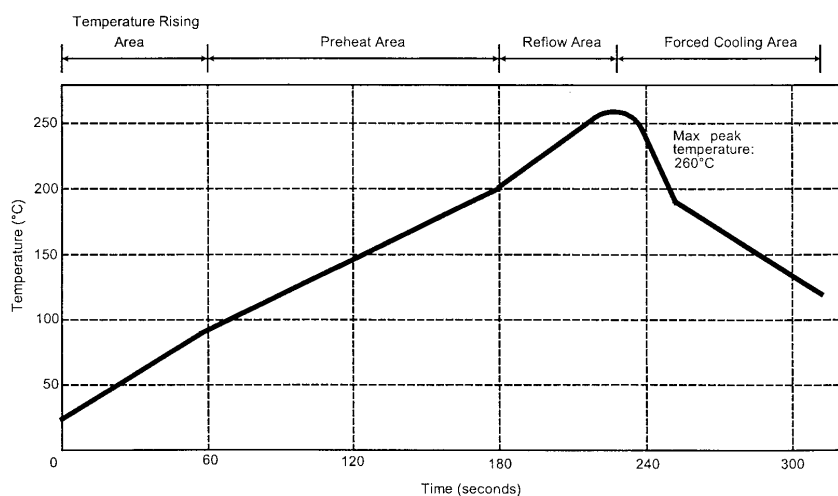
In the effort to improve our products, we reserve the right to make changes judged to be necessary.

STRAIGHT FEMALE RECEPTACLE FOR PCB**SMT TYPE REEL PACKAGING BY 100****R209.408.012**

Series : MMS

SOLDER PROCEDURE

1. Deposit solder paste 'SnAg4Cu0.5' on mounting zone by screen printing application. We recommend a low residue flux.
We advise a thickness of 150 micromm (5.850 microinch). Verify that the edges of the zone are clean.
2. Placement of the receptacle on the mounting zone with an automatic machine of 'pick and place' type.
3. Soldering by infra-red reflow.
4. Cleaning of printed circuit boards.
5. Checking of solder joints and position of the component by visual inspection.

TEMPERATURE PROFILE

Parameter	Value	Unit
Temperature rising Area	1 - 4	°C/sec
Max Peak Temperature	260	°C
Max dwell time @260°C	10	sec
Min dwell time @235°C	20	sec
Max dwell time @235°C	60	sec
Temperature drop in cooling Area	-1 to - 4	°C/sec
Max dwell time above 100°C	420	sec

Issue : 0743 A

In the effort to improve our products, we reserve the right to make changes judged to be necessary.

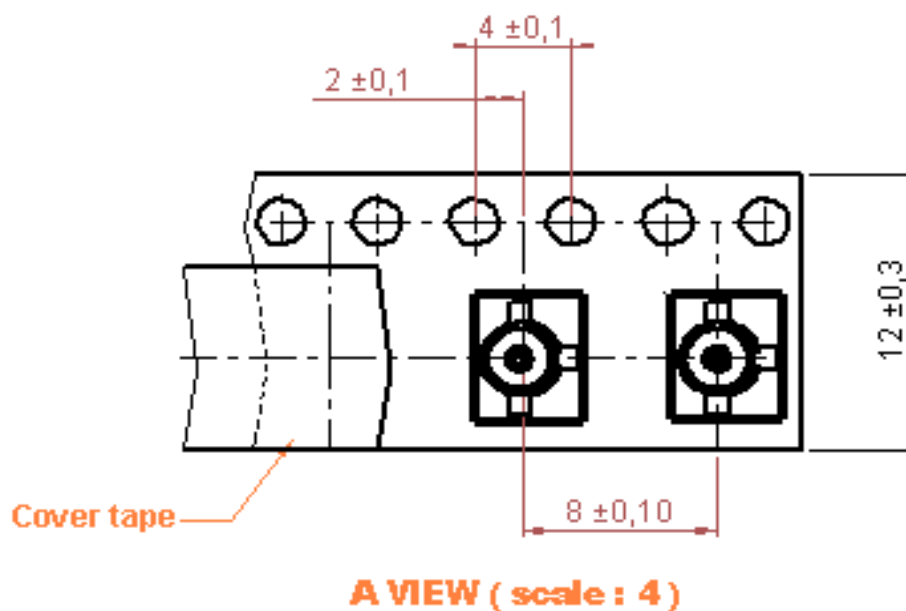
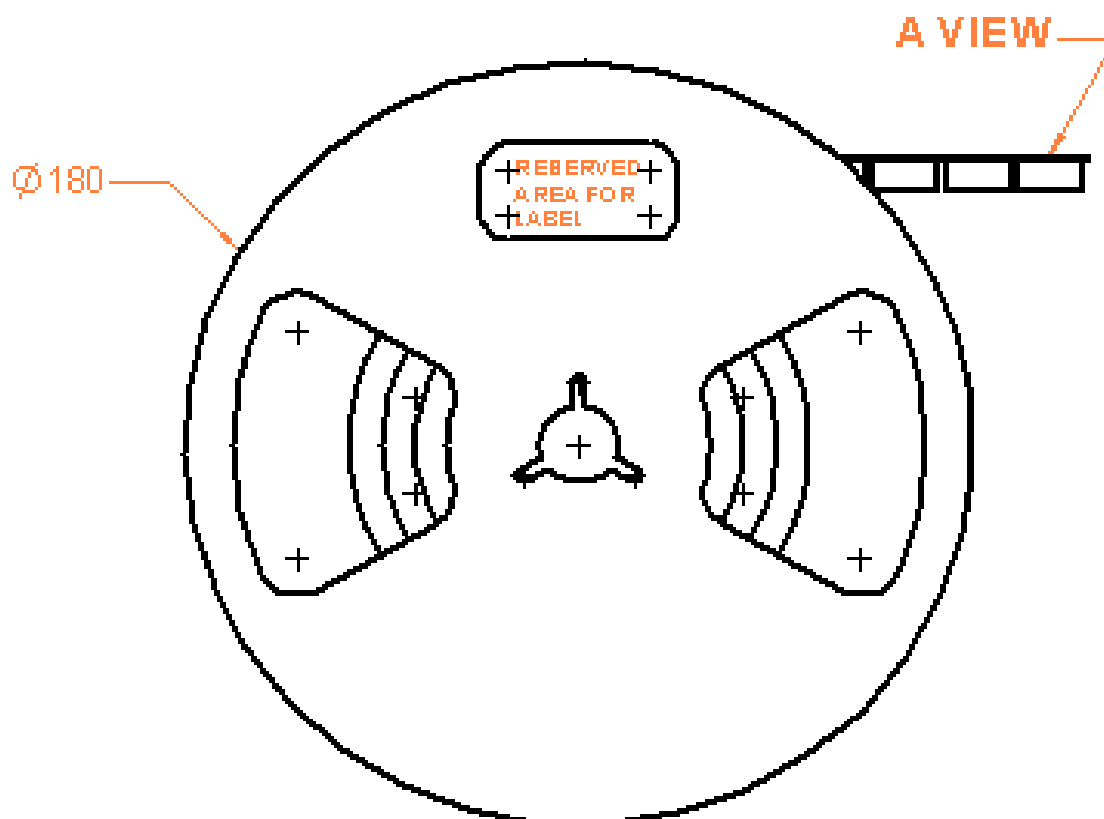


STRAIGHT FEMALE RECEPTACLE FOR PCB

SMT TYPE REEL PACKAGING BY 100

R209.408.012

Series : MMS



Issue : 0743 A

In the effort to improve our products, we reserve the right to make changes judged to be necessary.

Mouser Electronics

Authorized Distributor

Click to View Pricing, Inventory, Delivery & Lifecycle Information:

Radial:

[R209408012](#)